

With Passion and Endless Challenge, we, GPT Corporation are committed to be growing up to become the GLOBAL POWER LEADER in the field of Power Generation, Energy and Environment by 2020.



GPT Corporation

www.gpt21.net www.gptworld.net

| CEO MESSAGE |

We, GPT Corporation, believe human resource is the most critical factor of creating the difference which people count on. The creation of added-value for customers is our first priority when we go at a run for future. We do keep a firm position that there exist more important things than the company profits while carrying out our business. Our major business activity covers Supply & Installation of Equipments & Materials for Power Plants and Industrial Plants such as Petrochemical Plants, Oil Refineries, Cement Plants, Steel Mills and Water Treatment Plants into global Market. With Passion and Endless Challenge, we, GPT Corporation are committed to be growing up to become the GLOBAL POWER LEADER in the field of Power Generation, Energy and Environment by 2020.

John shin
CEO

COMPANY

Foundation | April 2002, Seoul, Korea

C E O | John Shin

Home Page | www.gpt21.net www.gptworld.net

Phone | 82-2-461-2701

Fax | 82-2-461-3041

Address | 656-1220, Seoul Forest Halla Ecovalley,
Seongsu-dong-1ga, Seongdong-gu, Seoul, Korea

Major Business |

- Supply of Power Plant BOP & Industrial Plant Equipments
- Supply & Installation of Machinery & Electrical Equipments
- Repairing & Maintenance Technology Services

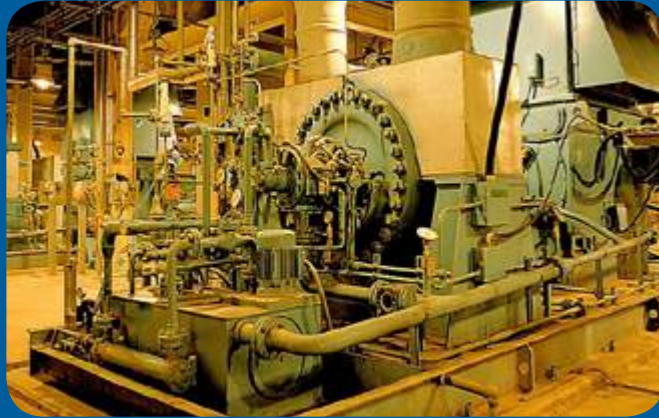
Bank Reference | Industrial Bank of Korea

MAJOR PRODUCTS

■ Pump	4
■ Valve & Actuator	6
■ Compressor & Blower	8
■ Heat Exchanger	10
■ Expansion Joint	11
■ Gear Reducer	12
■ Conveyor System & Components	13
■ Bearing	14
■ Plane Bearing	15
■ Coupling	16
■ Mixer(Agitator)	17
■ Large & Heavy Forging/Casting Steel Product	18
■ Hoist & Crane	19
■ Industrial Burner & Accessories	20
■ Air Pollution Control System	21
■ Filter	22
■ Tank Internal	23
■ Motor	24
■ Transformer/Reactor/Capacitor	25
■ Electrical Equipment	26
■ Instrument Device	28
■ Metal Crack Repair	29
■ Plumber	30
■ MIS(Multi-Impact System)	31



Pump



Horizontal Double Suction Pump

- Size : 200~1,800mm
- Capacity : 300~28,000m³/hr

Application

- Feedwater Booster Pump
- Cooling Water Pump (Oil & Gas Industry)
- Circulation Pump
- Crude Oil Transfer Pump



Horizontal HP Pump

- Size : 50~600mm
- Capacity : 40~6,000m³/hr • Head : Max. 4,000m

Applications

- Main Feedwater Pump
- Aux. Feedwater Pump
- Boiler Feedwater Pump
- Start-up Feed Pump



Api Process Pump

- Capacity to 25m³/min
- Temperature to 460°C
- Head to 200m
- Size to 300mm

Applications

- Petroleum Refinery
- Petrochemical Industry
- Other Chemical
- High Temperature and High Pressure Service



ISO Process Pump

- Capacity to 12m³/min
- Temperature to 177°C
- Head to 140m
- Size to 250mm

Applications

- Chemical Industry
- Petroleum Refinery
- Petrochemical Industry
- Other Various Industries



Double Suction Pump

- Operating Parameters Capacities to 10,000m³/hr(44,000GPM)
Heads to 160m(525ft)
Pressures to 15kg- f/cm² Temperatures to 120°C

Applications

- High Capacity, High Pressure Service
- Industrial Process Pump
- Utility Circulation Water



Multi-stage Pump

- Operating Parameters
Capacities to 500m³/h(2,200GPM)
Heads to 800m (2,600ft)
Temperatures to 300°C(570°F)

Applications

- Cogeneration • Hydraulic Press Operation
- Reverse Osmosis • Boiler Feed
- Booster • High Pressure Service



High Pressure Feed Water Pump

- Capacity to 2.5m³/min
- Head to 500m
- Temperature to 180°C
- Size to 300mm

Applications

- Boiler Feed Water
- Processing Water
- City water and High Pressure Water in General



Non-Clog Paper Stock Pump

- Capacity to 7.5m³/min
- Head to 100m
- Temperature to 177°C
- Size to 200mm

Applications

- chemical Industry
- Food Industry
- Paper Industry
- Industries Waste Water

Valve



Water Works Type Butterfly Valve

Range	Application
Normal Size	8"(200A) – 120"(3000A)
Fluid	Water, Air, Steam, Gas
End Connection	Sea water JIS 10K Ansi 150# PN 10 AWWA C 504, KS B 2333
Rating	Flanged
Temp. Range	-20 ~ 180°C



Manual Butterfly Valve

Range	Application
Normal Size	1 1/2" (40A) – 84" (2100A)
Fluid	Water, Air, Steam, Gas
End Connection	JIS 10K, 20K, 30K ANSI 150#, 300#, 600# PN 10, 16, 20
Rating	Water, Lugged, Flanged
Temp. Range	-50 ~ 600 °C



Ball Valves

Double" D"High Strength Stem
Accepts most standard actuation equipment.

Manual Operation

All YPPC ball valves are fitted with a hand wrench as standard for manual operation.

Low Torque

Low, constant and predictable torque.

Floating Ball Seat

Designed for bubble-tight shutoff across the pressure range.

High Flow Cavity

With minimal pressure loss it reduces plant operating costs



Knife Gate Valve

- Cast stainless steel body, gate, packing gland and yoke.
- Gate desinged to withstand full 150 PSI reated pressure as required by MSS SP-81
 - Body cavity, seat configuration and beveled gate designed to provide shut-off capability in thick media such as pulp stock, slurries, or with solid media such as pellets of powders.
 - Easy conversion from handwheel operator to cylinder, bevel gear or electric motor operator using cast yoke.
 - Enclosed brass stem busing provides reduced operating torque and protection of the stem busing from harsh enviroments.
 - Hardened 410 stainless steel seat available to prevent galling in high cycle and/or high end applications or abrasive applications.
 - Stainless steel stem for corrosion resistance.
 - Teflon wiper in packing to provide gate support and stablize packing seal.
 - Full port ID.

Valve & Actuator



MOV(Multi-turn actuator)

Application

- Multi turn valves – globe, gate valves and also for quarter turn valves – butterfly, ball valves adopting 2nd worm reducer
- Major parts / components are easy to change for trouble shooting and maintenance.
- Wide range voltage motors (220V~460VAC, 3Phase) are ready for your choice.



Valve Position Monitor

Application

- Chemical & petrochemical
- Municipal wastewater
- Power plant
- Oil refinery
- Marine

Hydraulic Actuator

Application

The self-contained electro hydraulic actuators consist of control, hydraulic, power modules, incorporating a motor driven pump with an integral hydraulic cylinder for minimum installation and maintenance costs. They are available in both double acting and spring return (clockwise or anticlockwise) configurations for quarter turn movement such as ball, butterfly, plug valves and dampers.



Pneumatic Actuator

Application

Pneumatic actuators are specifically designed to respond to your demanding needs on automation valve market. We can provide a wide range of torque outputs to suit quarter turn ball, butterfly, plug valves and dampers for complete valve automation solutions



Compressor



OILFREE SCREW COMPRESSOR

AL2-37*75A (Air Cooled)

Hanshin AL 2-SERIES has been manu-factured under the guideline of ISO 9001. As a result of this, we give you the guarantee minimal maintenance fees, running costs and maximize operating life. The dual vent seals realize oil free in the chamber of 1st and 2nd stage rotors. Besides, the newly designed rotor tooth realizes the lowest energy consumption by generating the highest air discharge volume. The load/unload system has simple harmonized structure not causing any trouble. Now, please come to Clean Air world you wanted to. We will make steady progress with complete system to meet all your needs.



Oil-free Double Stage screw compressor

CDH-150A

ULTRA COATING ROTORS

This coating offers highly efficient corrosion protection even under extreme conditions (approx. 300°C). In addition, it is a decisive factor for improving efficiency : reducing discharge temperature of the airend, increasing volume flow while decreasing power consumption.

STAINLESS STEEL HIGH PRESSURE STAGE ROTOR

The stainless steel HP rotor pair is rust-free from condensed water.

INLET BLOW-DOWN SYSTEM

Switching of loading & unloading by oil pressure shortens the entire system cycle, thereby reducing power consumption cost. Besides, the maintenance is easy and economical with pneumatically operated.



OIL FLOODED ROTARY SCREW COMPRESSORS

RCH-5*2300 SERIES (5HP*20HP)

Features and Benefits

Compact Size

Minimizing installation space and weight

Low Noise Level

Minimizing noise level by adopting encapsulated type air end

Smart Design

Fine external appearance by modern concept design

Service Friendly

Easily accessible to key parts for easy maintenance

Simple Piping

Minimizing leak and differential Pressure by simple piping



AIR COOLED PISTON AIR COMPRESSOR

NH-20 (20HP)

Features and Benefits

Excellent Durability

Slow operating speed ensures high efficiency, low operating temperature and longer life. Heavy duty, cast-iron, single stage industrial reciprocating compressor

Low Noise/Low Vibration

Quiet, vibration-free operation from dynamically balanced components, slow speed design

High Reliability

All of our genuine parts are machined by CNC machining centre and tested by HASHIN's strict quality control system to ensure trouble free operation

Hanshin High Efficiency

Entirely different design considering paper RPM, reasonable air flow and excellent cooling capability enables higher efficiency of air discharge and longer working life

Blower / Compressor



Centrifugal Blower



Roots Blower



Ring Blower



Air/Gas Turbo Compressor

Heat Exchanger

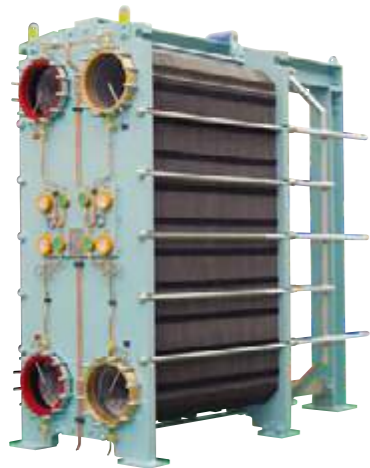


Plate & Frame Heat Exchanger

The plate heat exchanger is fixed by numbers of thin and corrugated heat transfer plate, hanged between the carrying bar on the above and the guide bar on the below. These heat transfer plate provide flow channels for two kinds of fluid, and the chevrons on the heat transfer plate make the turbulent flow and play a role to support the plate against the pressure difference between the two fluids. The plate pack is to be placed between the fixed cover and the movable cover, and fixed with tie bolts.

Oblong(Plate & Shell) Heat Exchanger

Oblong Heat Exchanger combines good features Plate heat exchanger and Shell & Tube heat exchanger. Oblong Heat Exchanger is designed very compact compared to Shell & Tube Heat Exchanger. And it can perform high heat exchange efficiency. Oblong Heat Exchanger provide a large heat transfer area in a very compact size.

- Chemical Industry: VOC Condenser, High Temperature & Pressure Recovery System, Ethanol Condenser
- Evaporator – Condenser – Generator – EO/EG Heat Exchanger
- High Temperature & Pressure Waste Heat Recovery Heat Exchanger
- Ethanol–Condensed Solvent Recovery System
- District Heating – Hot Water Heating – Ventilation Facility
- Cooling & Heating System – Steam Heater
- Various Types of High–Temperature & High–Pressure Heat Exchangers and Waste Heat Recovery Systems



Heat Exchanger

- Channel Type
 - Fixed Head
 - U–Tube
 - Element (Tube Bundle)
 - Floating Head
- Tubular Type
 - Double Pipe
 - Fixed Head
 - Floating Head
 - U–Bend
- Special Type
 - Double Pipe
 - Single Helix Coil
 - Pancake
 - Round Coil



Waste Heat Recovery System

- Heat Generating Facilities
- Dryer and Evaporator
- Waste Gas Heat Recovery
- Compressor After cooler



FINNED TUBE

- HF Welded Finned Tube
 - Solid Type
 - Serrated Type
- Aluminum Finned Tube
 - Embedded Type
 - Wrap–on Type
 - Double Wrap Type
 - Knurled Type
- Special Type Finned Tube
 - Oval Finned Tube
 - Low Finned Tube
 - Extruded Finned Tube
 - Hexagon Finned Tube
 - Square Finned Tube

Expansion Joint



Single Type Expansion Joint– Tied (MST)

This model, with the tie–rod assembly, is an improvement on the Single Type Expansion Joint. This model is designed for pipelines with lateral movements. Tie–rods are designed to sustain the thrust generated during operation.



Universal Type Expansion Joint–Un Tied (MUN)

A universal expansion joint contains two bellows joined by a intermediate pipe for the purpose of absorbing any combination of the three basic movements, i.e. axial movements, lateral deflection, and angular rotation.

This model is used for pipelines with bigger lateral movements than the single type.



Hinge Type Expansion Joint (MSH)

A hinged expansion joint contains one bellows and is designed to permit angular rotation, by the use of a pair of pins through hinge plates attached to the expansion joint ends. The hinge arms and hinge pins must be designed to restrain the thrust of the expansion joint due to internal pressure.

Hinged expansion joints should be used in sets of two or three to function properly.



Gimbal Type Expansion Joint (MSG)

A gimbal expansion joint is designed to absorb combined movements by the use of two pairs of gimbal arm and gimbal pin, which restrains the thrust of the expansion joint due to internal pressure while the bellows is designed to absorb angular rotation only. Gimbal expansion joints should be used in sets of two or three to function properly just like hinged expansion joints.



Pressure Balanced Type Expansion Joint (MSB)

If the diameter of the pipe is excessively large or high pressure is running in the pipes, anchors must be installed to restrain the thrust of the expansion joint. However when conditions would not allow the installation of anchors, this pressure balance type expansion joint has to be used. According to the location of installation, L type (MSB–Bent Pipe Balanced) or S type (MSS–Straight Pipe Balanced type) is used.

Gear Reducer

Max Geared Motor



MAX® is a small and medium sized geared motor series for industrial use. Horizontal, Vertical and Line Power types are available for any application.

- Power: 1/4HP ~ 20HP (0.2 kW ~ 15 kW)
- Gear Ratio : 1/5 ~ 1 /600
(Higher ratio is available for special design)

Multi Max Worm Reducer



- Multiple Mounting Type to apply various positioning condition
- Modularized Component for Various types fabrication
- Minimized types of frame for faster delivery
- Order base Hollow Shaft, Solid Shaft

- Power: 1/4HP ~ 10HP (0.2 kW ~ 7.5 kW)
- Gear Ratio : 1/10-60 (SINGLE)
1/100-3600 (DOUBLE)

Worm Reducer (Vertical Type)



The output shaft extrudes perpendicular to the base. This type is for low speed and high torque such as agitator.

Gear Box

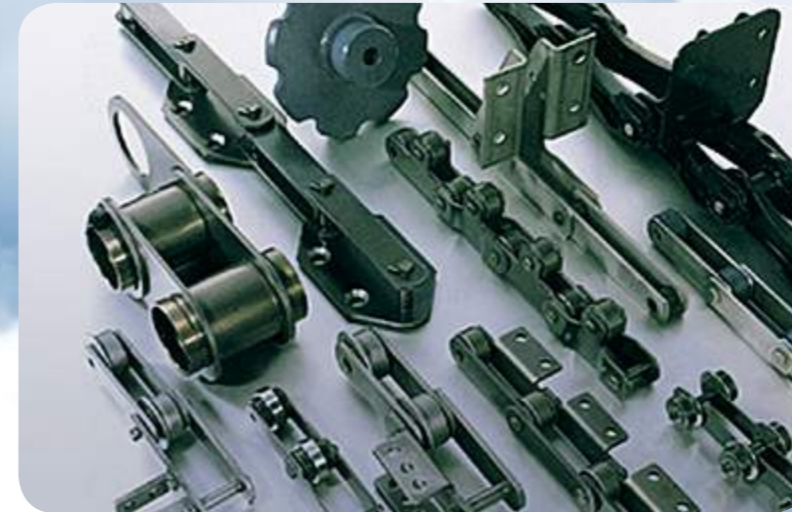


Gear Boxes are suitable for any forms, any gearing and any direction for end users. Spur, Helical, Worm, Planetary, Screw or any type of gears can be combined for the reducer.

- Power: 0.4 kW ~ 5000 kW
- Gear Ratio : 1/2 ~ 1/∞
- Torque Output: As ordered

Conveyor System

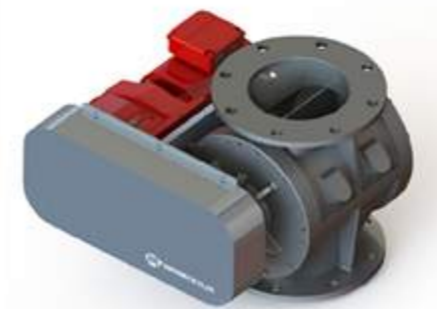
Conveyor / Chain



- RF Conveyor Chain
- Bucket Elevator Chain
- Hollow Pin Chain
- Block Chain
- Side Roller Chain
- Top Roller Chain
- Double Plus Chain
- Deeply Link Chain
- Escalator Step Chain
- Hinged Belt Conveyor
- Sprocket

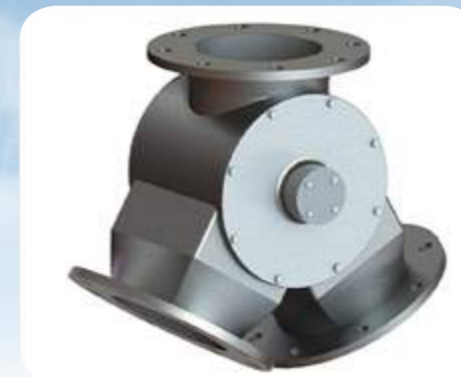
Pneumatic Conveying System / Components

Rotary Valve



- For Power/Pallet Material feeding into Pneumatic Conveying System Line with differential pressures up to 1.5bar[g].

Gravity Diverter



- Using for feeding the bulk material to the pneumatic conveying system from the storage tank.

Diverter



- Using for diverting the bulk material flow in pneumatic conveying system.

Bearing



Cylindrical Roller Bearing for Line Shaft
Radial Load Support

Pressure Roller Bearing
For Sinter Pallet Car



Four-Row Cylindrical Back Up
Roller Bearings



Thrust Tapered Roller Bearings



Four-Row Cylindrical / Tapered
Roller Bearings (Roll neck)



Four-Row Tapered Roller
Bearings



Back Up Roller Bearing For
Tension Leveler



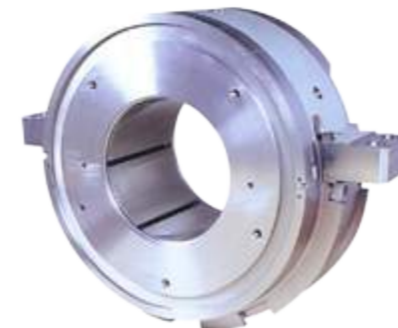
Four-Row Tapered Roller
Bearings (Verticality)



Four-Row Cylindrical Tapered
Roller Bearings

Plane Bearing

Power Plant



ITEM : DBL TILT PAD BEARING
DIM' : O.D864 X I.D 376 X H331
MAT'L : B21A14/B50A517B2



ITEM : COMPLEX BEARING
DIM' : O.D1135.3 X I.D355 X 340(mm)
MAT'L : TEGOV738/S25C



ITEM : JOURNAL BEARING
DIM' : O.D1030 X I.D450 X 475(mm)
MAT'L : TEGOV738/C22+N



ITEM : L.P. BEARING
DIM' : O.D317 X I.D228 X B141
MAT'L : B21A14/SM400B

Cement Plant



ITEM : THRUST PAD BEARING ASS'Y
DIM' : O.D181 X I.D85 X B88
MAT'L : HOYTS172/S45C,S20C



ITEM : BALL MILL BEARING
DIM' : O.D1733 X I.D1371 X B557
MAT'L : WJ2/SC410



ITEM : SLIDE SHOE BEARING (Al-CU ALLOY)
DIM' : R2750 X T257
MAT'L : AMPCO-TRADE10



ITEM : ROLLER BEARING BUSH
DIM' : O.D670 X I.D502 X B625
MAT'L : LBC3



ITEM : KILN INTER-SHAFT BEARING
DIM' : O.D280 X H550 X B170
MAT'L : WJ2/FC25

Coupling

Drum Couplings



Couplings For Railway Vehicle



Fluid Couplings For Variable Speeds



The KSL is the right solution for your start up and speed variation problems in large power applications. It is a drain type fluid coupling, with a new variable filling system, with a lock-up device and with quick release valves, completely electronically controlled. The new variable filling system(patented) consists of a frequency converter that controls the speed of feel oil pump.

Shaft Couplings



Ringflex Couplings
The ringflex couplings can reduce vibration and torsional oscillations.



Fluid Couplings
The fluid couplings is a hydro-kinetic transmissions, therefore the ware is practically zero.



Gear Couplings
With the capacity of handling heavy loads,gear couplings are much smaller and lighter than any other couplings



Rubber Couplings
The rubber couplings are softer than most other couplings on market by natural rubber element



Disc Couplings(Panflex)
The PANFLEX couplings are free from rotational backlash and have no sliding, frictional and moving parts.



Chain Couplings
The chain couplings consist of three major parts; two hardened teeth sprockets and one double roller chain



Flexible Flanged Couplings
The flange couplings provide clean, quiet, trouble free performance and no lubrication.



Jaw Couplings
All standard models of JAW couplings have excellent damping capacity of torsional vibrations.

Mixer(Agitator)

S5 top-mount mixer with removable mechanical seal system



S5 top-mount two-/three-step gear reduction type



S4 top-mount one-step gear reduction type



S4 side-mount one-step gear reduction type



Features

- Medium to Large sized Mixers with a wide range of variations.(from 0.75 to 90Kw)
- Easily replace mechanical seals without removing the reduction parts even when they are installed under the low ceiling.
- Mixers are made more compact through the rearrangement of gear arrays.
- Substantial cost reduction is made possible through the increased use of common parts.
- The combination of rotation speed and motor output can be set in 17 different steps, a range far greater than that preceding models.
- The newly developed 3-bladed axial flow, 1-stage impeller achieves high discharge coefficient and low drag coefficient. This simplified impeller pro-vides even higher performance than 4-bladed pitched paddle, 2-stage impellers.
- These mixers can be used with any type of motor sold on the market.
- With some of these new mixers, mechanical seals can be easily attached or detached without removing the mixers from their place of installation.

Large and Heavy Forging & Casting Steel Product (With Precision Machining)



Trunnion Mill Head(47tons, Cast Steel)



Crusher Roll(65tons, Forged Steel+hard facing)



Kiln Tyre(Max. Dia. 9500mm/ Weight 160ton)



Roller for Kiln Tyre



Pulverizer(600MW Coal Fire Power Plant)



Coupling



Spindle Shaft

Hoist & Crane



Ceo Hoist

Filtering out the shortcomings of the existing hoist and open winch crab and selecting only strong points to secure stability and easiness to operate.

Featuring light, cost-effective, safe, harmonic drive, and trouble-free handling.

Making products smaller and lighter, (by 40% compared to crab)

Reducing economic cost (by 40% compared to crab)



Inverter Hoist

Mighty Power

Compact Design

Bandos technology moves the World

Exclusive Vector inverter for realizes high torque at low speed.

Smooth speed control (0~max, speed to choose to set up

Compactable Electric Brake extends the brake life.

Various Protective Function and Reduced shock increases the host life.

Mechanical composition is simple and light-weighted against the Creep.



Hoist Crane

Cost is moderate because of its simple construction and it is effective for simple loading and unloading work.

Used when the space between the building's ceiling and the traveling rail's surface is narrow.

Used frequently for small capacity types with short spans.

Equipments are needed for repairing.

Crane types and production scope

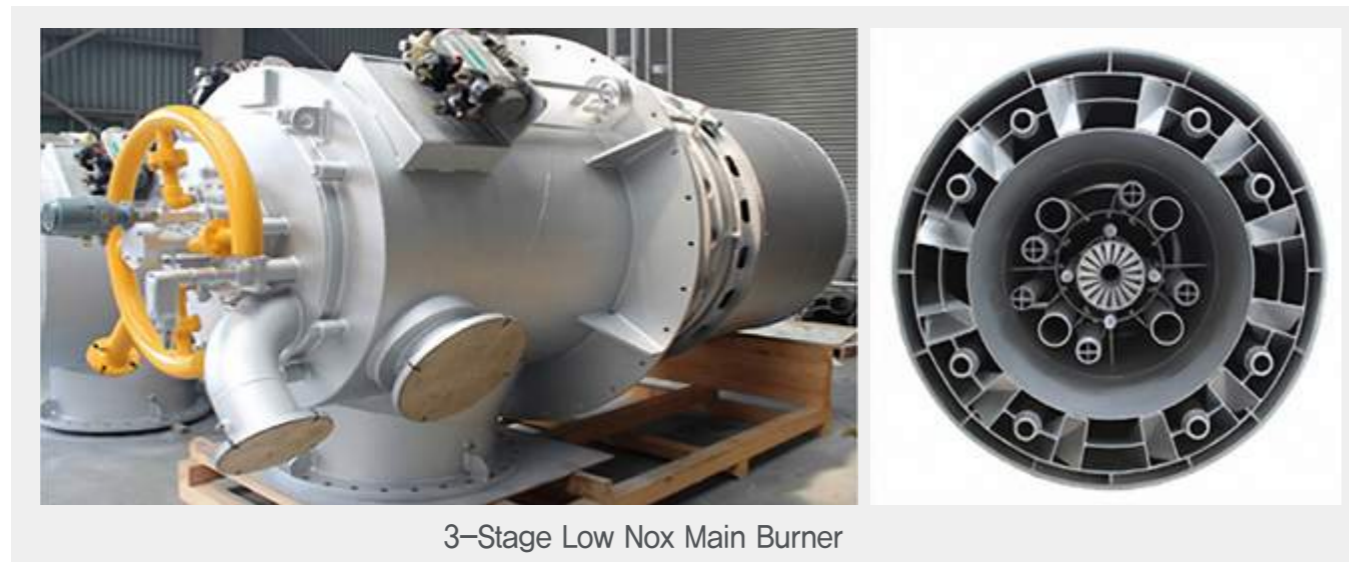
HOIST CRANE	0.5ton~400ton
CRAB CRANE	5ton~ 400ton
GANTRY CRANE	0.5ton~ 400ton
JIB CRANE	0.5ton~ 10 ton



Gantry Crane

Usually installed outdoor and suitable for high lift and high capacity. Two bridges are installed on the each side under the box girder, on which the crane is moved on the rail.

Industrial Burner & Accessories



Ignition Spark Plug



Connection Type	Size
A M4 Screw Type	A Ø15.8mm [0.63"] x 94L
B Pin Type	B Ø15.8mm [0.63"] x 191L
C Spring Tension Type	C Ø27.0mm [1.06"] x 550L
D Pin Type	D Ø15.8mm [0.63"] x 328L
E Spring Tension Type	E Ø15.8mm [0.63"] x 420L

Spark Exciter(DC Type)



- 1 IN-PUT POWER : 110~240VAC
- 2 OUT-PUT POWER : 2000VDC
- 3 TYPE : SOLID STATE ELECTRONICS
- 4 STORED ENERGY : 12JOULES MINIMUM
- 5 SPARK RATE : 3 / 6 / 10 SPARK/Sec



PYROMETER MONITOR

- 1 POWER : AC85 ~ 264V / 10W
- 2 INPUT : CAN 2.0 (R,G,B,IR DATA)
- 3 OUTPUT : TEMP1 (350 ~ 1650 °C)
TEMP2 (750 ~ 2000 °C)
4 ~ 20mA (TEMP, LEVEL1)
FLAME(1a), FAULT(1a)



PYROMETER SENSOR

- 1 POWER : 12VDC / 2W
- 2 INPUT : VL (400 ~ 700nm), IR (960nm)
- 3 OUTPUT : CAN 2.0 (R,G,B,IR DATA)
- 4 USE TEMP.
& HUMIDITY : -20~75°C, RH85%
- 5 CERTIFICATE : Ex d IIC, T6 IP66



Integral Type(Sensor + Monitor)

- 1 POWER : 24VDC/2.5W
- 2 SIGNAL OUTPUT : FLAME(1a),
FAULT(1a) 4~20mA, RS485
- 3 USE TEMP.
& HUMIDITY : -20~75°C, TH85%
- 4 CERTIFICATE : Ex d IIC, T6 IP66

Air Pollution Control System

Dust Collection System



Gas Treatment System



SCR Catalyst System(De-NOx)

Supplying SCR System
Replacing SCR Module
Catalyst Re-generation Service



Honeycomb Type



Plate type



Corrugate type

Filter

Water Treatment



Depth cartridge

- Media material : 100% PP / PP+PE
- Micron range : $0.5\mu\text{m} \sim 150\mu\text{m}$
- Diameter : OD 65mm / ID 28mm
- Length : 250mm~1016mm
- Provide longer service and used in large flow rate system like SW



Jumbo pleated cartridge

- Media material : 100% PP
- Cage & Core : PP(Polypropylene)
- Micron range : $0.1\mu\text{m} \sim 150\mu\text{m}$
- Diameter : 154mm
- Length : 10~60inch
- O ring material : EPDM/Viton/Teflon
- Application : Water treatment of general industry, SW
- Provide longer service and used in large flow rate system like SW



Pleated Cartridge

- Media material : PES / PTFE / PP
- Cage & Core : PP(Polypropylene)
- Micron range
/ PP : $0.1\mu\text{m} \sim 150\mu\text{m}$ / PES : $0.1\mu\text{m} \sim 5.0\mu\text{m}$ / PTFE : $0.3\mu\text{m} \sim 10\mu\text{m}$
- Diameter : 70mm
- Length : 10~60inch
- O ring material : EPDM/Viton/Teflon
- Application : Liquid filtration system

Air & Gas Treatment



Medim Filter(Mini Pleat)

- Easy exchange, carry and Keeping
- Compact and Unit type as Light weight
- Equivalent efficiency with Medium Air Filter
- Easy installation by header Type
- Reduced space of A, H, U over 200mm



Gas Turbine Filter

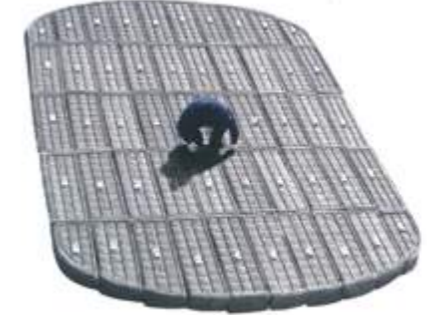
Special Feature

- Self-Cleaning pulse type
- Easier Disposing
- Re-Cycling usage
- High Efficiency Performance

Tank Internal



Packing Support



Demister Pad



Bed Limiter



Liquid Distributor



Wedge Wire Screen (Flat)



Wedge Wire Screen (Cylindrical)



Grating

Motor

Explosion Proof Motors



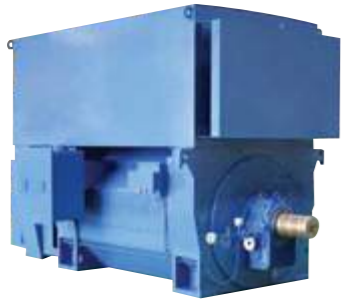
	Ex d/ de	Ex nA
Low Voltage Motors	Frame Size: 80M ~315SM	Frame Size: 80M ~ 315L
	Voltage: Max 690V	Voltage: Max 690V
	Frequency : 50/60Hz	Frequency : 50/60Hz
	Degree of Protection: IP55,56	Degree of Protection: IP55,56
	Temperature Class: ~T5	Temperature Class: ~T3
	Gas Group: IIB/IIC	



	Ex d/ de	Ex nA
Medium & High Voltage Motors	Frame Size: 315 ~ 630	Frame Size: 315 ~ 710
	Voltage: Max 13,800v	Voltage: Max 13,800V
	Frequency : 50/60Hz	Frequency : 50/60Hz
	Degree of Protection: IP55	Degree of Protection: IP55
	Temperature Class: ~T4	Temperature Class: ~T4
	Gas Group: IIB	

Medium & High Voltage Motors

TEAAC(Totally Enclosed Air to Air Cooled)



Output Range	Max. 10,000kW
Number of Poles	2-38
Degree of Protection	IP55

TEFC(Totally Enclosed Fan Cooled)



Output Range	Max. 600kW
Number of Poles	2-12
Degree of Protection	IP55

Low Voltage Motors

TEFC(Cast Iron Frame Motor)



Output Range	Max 375kW
Voltage	Max 600V
Frequency	50/60Hz
Number of Poles	2-16
Degree of Protection	IP54,55,56
Insulation Class	F,H

TEFC(Aluminum Frame Motor)



Output Range	Max. 7.5Kw
Voltage	Max. 600V
Frequency	50/60Hz
Number of Poles	2-6
Degree of Protection	IP54,55,56
Insulation Class	F,H

Transformer / Reactor / Capacitor



H.V Power Transformer

– Max. 550kV Max Capa. 800MVA



M.V Power Transformer

– Max. Voltage 69kV
– Max Capacity. 50MVA



High Performance Mold Transformer

– Max. Voltage 33kV,
– Max. Capacity 15MVA



Motor Starting Reactor

– Voltage 3300/6600, 440/220Volt,
– Capacity 22~7500kW



Power Capacitor

– Power Range 22~1000kvar
– Max Volt ~22000
– IEC/ANSI, NEMA/IEEE



Super Capacitor

– Life Time Max. 1,000,000 Cycles
– Capacity 7500F



Gas Insulated Switchgear

Rated Voltage(kV) : 25.8
Rated Current(A) : 600/2000
Rated Frequency(Hz) : 50/60
Rated Short-Time withstand Current(kA/1sec) : 25
Insulated Material : SF6 Gas
Component : VCB, EDS, PT, MOF, BCT, Main Bay, Feeder Bay, Section Bay, Tie Bay
Applied standard : IEC 62271-100, IEC 60298



Cubicle Type Gas Insulation Switchgear

Rated Voltage(kV) : 25.8
Rated Current(A) : 630/1250
Rated Frequency(Hz) : 50/60
Rated Short-Time withstand Current(kA/1sec) : 25
Insulated Material : SF6 Gas
Component : VCB, LBS, ALTS, MOF, PT, Fuse combination Switch
Applied standard : IEC 60298, IEC 62271-100, IEC 62271-105, IEC 50265-1



Ring Main Circuit Breaker

Rated Voltage(kV) : 12/25.8
Rated Current(A) : 630
Rated Frequency(Hz) : 50/60
Rated Short-Time withstand Current(kA/1sec) (kA/4sec) : 20/12.5
Insulated Material : SF6 Gas
Applied standard : IEC 60265-1, ANSI C37.60, ANSI C37.71, GB 3906-91



Pad mounted Gas Insulated Load Break Switch

Rated Voltage(kV) : 12/25.8
Rated Current(A) : 400/600/630
Rated Frequency(Hz) : 50/60
Rated Short-Time withstand Current(kA/4sec) (kA/1sec) : 20/12.5
Insulated Material : SF6 Gas
Applied standard : IEC 60265-1, ANSI C37.71, ANSI C37.90.1, GB 3804-2004



Automatic Load Transfer Switch

Rated Voltage(kV) : 25.8
Rated Current(A) : 630/1250
Rated Frequency(Hz) : 50/60
Rated Short-Time withstand Current(kA/1sec) : 16/25
Insulated Material : SF6 Gas
Automatic Load Transfer Switching time(ms) : 200
Applied standard : IEC 60265-1



Pole mounted Gas Insulated Load Break Switch

Rated Voltage(kV) : 12/25.8
Rated Current(A) : 400/630
Rated Frequency(Hz) : 50/60
Rated Short-Time withstand Current(kA/4sec) : 20/12.5
Insulated Material : SF6 Gas
Applied standard : IEC 60265-1, ANSI C37.63, ANSI C37.71, GB 3804-2004



Polymeric Insulated Load Break Switch Overhead Line

Rated Voltage(kV) : 12/25.8
Rated Current(A) : 400
Rated Frequency(Hz) : 50/60
Rated Short-Time withstand Current(kA/4sec) (kA/1sec) : 12.5
Insulated Material : Air
Applied standard : IEC 60265-1, ANSI C37.71, ANSI C37.90.1



Automatic Circuit Recloser

Rated Voltage(kV) : 25.8
Rated Current(A) : 630
Rated Frequency(Hz) : 50/60
Rated Short-Time withstand Current(kA/1sec) : 12.5
Insulated Material : SF6 Gas
Applied Standard : RS150.655~656, IEC 62271-100



Load Break Switch with Fuse

Rated Voltage(kV) : 25.8
Rated Current(A) : 630/Fuse : 100
Rated Frequency(Hz) : 50/60
Rated Short-Time withstand Current(kA/1sec) : 20
Insulated Material : Load breaker
Applied Standard : IEC 60265-1, IEC 62271-105, IEC 60282-1, KSC 4615



Automatic Sectionalizing Switch

Rated Voltage(kV) : 25.8
Rated Current(A) : 200
Rated Frequency(Hz) : 50/60
Rated Short-Time withstand Current(kA/1sec) : 10
Insulated Material : Load breaker
Applied Standard : KEMC-1126, ANSI C37.60



Vacuum Circuit Breaker

Rated Voltage(kV) : 7.2/12/25.8
Rated Current(A) : 630/1,250/2,000/3,150
Rated Frequency(Hz) : 60
Rated Short-Circuit breaking Current : 12.5/25/40kA
Rated Short-Circuit making Current : 32.5/65/105kAp
Impulse withstand voltage : 60/75/125kV, peak
Power frequency withstand voltage : 20/28/50kV, rms/1min



Air Circuit Breaker

Rated Voltage(V) : 690
Rated Current(A) : 1600, 2000, 3200, 4000, 5000
Rated Frequency(Hz) : 50/60
Rated Short-Time withstand Current(kA/1sec) : 1600AF~5000AF/50~100kA
Insulated Material : Load breaker
Applied Standard : IEC 60947-1



ATS

Rated Voltage(V) : 600
Rated Current(AF) : 100~3000
Rated Frequency(Hz) : 50/60
Rated Short-Time withstand Current(kA/1sec) : 10~85kA
Applied Standard : IEC 60947-6-1



Molded Case Circuit Breaker & Earth Leakage Circuit Breaker

Rated Voltage(V) : 600
Rated Current(AF) : 30~800
Rated Frequency(Hz) : 50/60
Breaking Capacity(kA) : 35~85
Applied Standard : KS



Magnetic Contactor

Rated Voltage(V) : 600
Rated Current(A) : 9~220
Rated Frequency(Hz) : 50/60
Applied Standard : CE, TUV, KR

Instrument Device



Pressure Gauges

- General Equipment gauges
- Providingn Economical and reliable service
- Designed for non–corrosive media such as Air, Oil, Gas or Water
- Wide application range ; Pumps, Compressor, Regulators or other equipment
- Providing various connection types such as PT, PF, NPT, BSP or others



Variable Area Flowmeter

Size	15mm(1/2")– 100mm(4")
Connection	Standard JIS 10K flange
Temp. range	Max 120°C
Allowable thermal shock	Max 80°C
Accuracy	±2%F.S.(option ±1.0% F.S)
Range ability	10:01



Temperature Gauges

- Industrial purpose gauges
- Providing economical and reliable service
- Designed for corrosive media
- All stainless steel internal and external structure
- Providing various types of connection such as PF, PT, NPT BSP or others



Orifice Flowmeter

Size	10mm(3/8") – 80mm(3")
Connection	PT(F)
Temp.range	Max120°C
Allowable thermal shock	Max80°C
Accuracy	±2%F.S.
Range ability	5:01

Metal Crack Repair

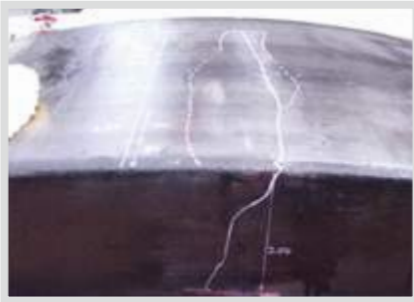
Power Plants

(Part Name : #2 LP2 Turbine Casing
Material : Cast Iron
2600mm Cracks happened on thecasing



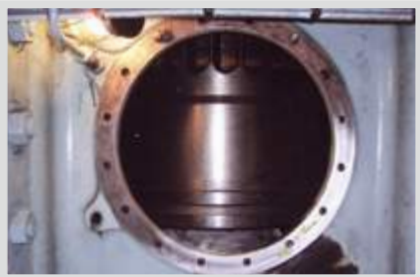
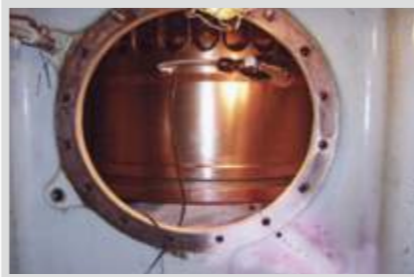
Cement Plants

Part Name : #2 Kiln no.3 Tire
Material : Cast Steel
cracks happen on the kiln tire



Marine Parts

Part Name : M/E Cylinder Frame (6S70MC–C)
Material : Cast Iron
Cracks happened from bolt hole on scavenge box.

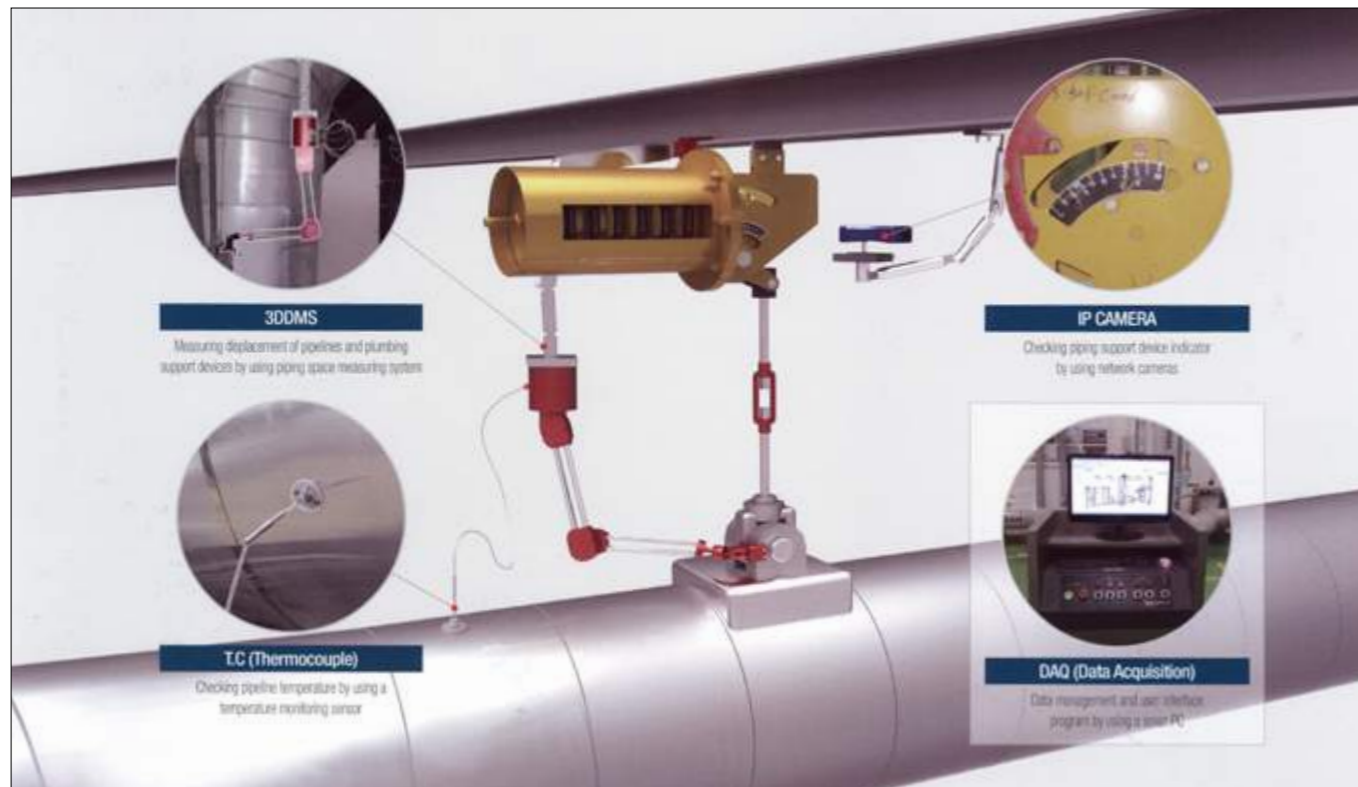


Plumber

Integrated management system for piping stabilization

The PLUMBER which is an integrated management system for piping stabilization, is designed to carry out real-time monitoring the 3-D behavior of plant pipes in operation under high temperature and pressure, including the temperature of pipelines and the state of piping support devices by installing it on the parts from a boiler or a turbine. And it is the best solution for plumbing integrity evaluation for generating units and securing the safety, by managing and monitoring the system remotely after constructing the relevant data base including the drawings and history management of plumbing and piping support devices.

Configuration of PLUMBER system



Piping Supports Management

Spring Hanger Evaluation and Adjustmen



Bottom Over Scale



Adjustment of travel

Rigid Hanger Evaluation and Adjustment



Installation of load evaluation devices



Load adjustment and balancing

Snubber Evaluation and Maintenance



Snubber Bending



Repairing snubber evaluation device

Pipe Rack Maintenance



breakaway of pipelines



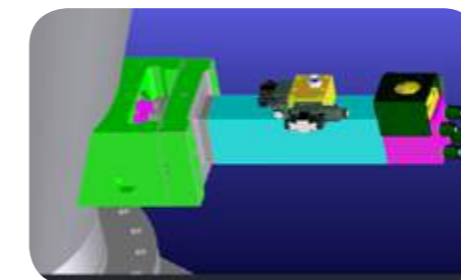
Repair and maintenance of deviated and damaged parts

MIS(Multi-Impact System)

“Discharge Aids” for solving coal flow problems caused by arching, piping and etc. on the coal Silo, Hopper, Bin, Chute in coal-fired steam power plant.

〈ABT Operating Condition〉

- Hydraulic Oil Flow(LPM) : 25~40
- Operating Oil Pressure(bar): 100~140
- Operating Oil Temperature(°C): Over 20
- Max. Impact Velocity(m/sec): Over 1.5
- Max. Impact Momentum(kg · m/sec): Over 29.4



Hyd. Oil

Control Line



HPU

〈HPU Specification〉

- Pump Cut-off Pressure(bar): 190
- Max. Flow Rate(LPM): 62.9
- Electric Motor(KW): 30
- Electric Heater(KW): 6
- Coolant Capacity(Kcal/hr): 2500
- Oil Temperature Range(°C): 20~40
- Hydraulic Fluid: Mineral Oil
- Viscosity: ISO VG cSt at 40 °C
- Oil Contamination: NAS 9 Class
- HPU Auto/Manual Operation

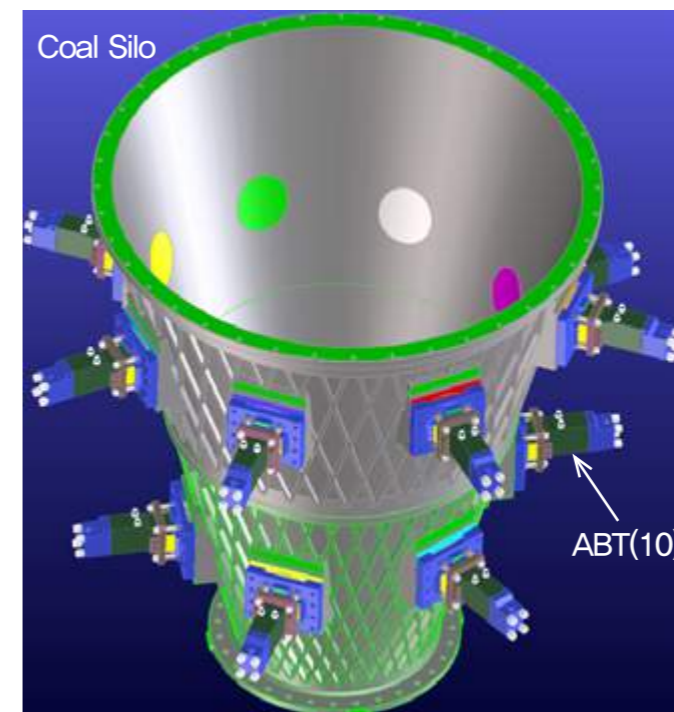


MIS Controller

〈MIS Control Function〉

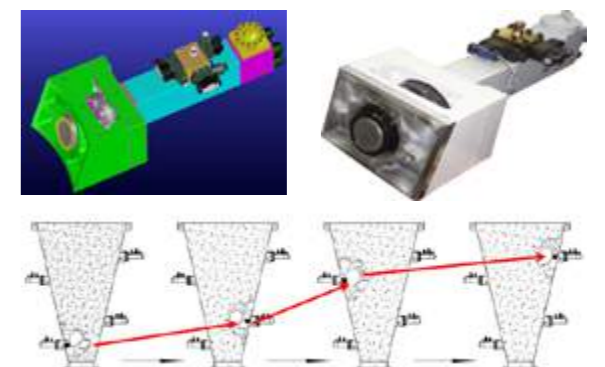
- ABT Auto/Semi-Auto/Manual Operation
- Piping Line Oil Circulation Control(Heating)
- HPU Pump On/OFF Control
- HPU Operating Situation Display
- ABT Operating Condition Setting (Operation Time, Delay Time, Cycle Time)
- ABT Operating ON/OFF Setting
- ABT Operating Situation Display

MIS Application 1(Coal Silo)



Coal Silo

ABT(Arch Breaking Actuator)



HPU



MIS Controller

GPT Network

GPT Corporation

656-1220, Seoul Forest Halla Ecovalley,
Seongsu-dong-1ga, Seongdong-gu, Seoul, Korea
Phone : 02-461-2701 Fax : 02-461-3041
Email : gpt@gptkorea.com
Web-site : www.gpt21.net / www.gptworld.net

GPT Representative Indonesia

PT. GPT Indonesia(Jakarta Office)
Jl. Prof. Soepomo, SH No. 1 (Komp. Keuangan)
Jakarta Selatan 12870, Indonesia
Phone : 62 21 22104610 Fax : 62 21 22104610
Email: gptindo@gptkorea.com

GPT Representative Vietnam

KBDC, Hanoi-c/o Korean Embassy,
17th floor, Charm Vit Tower
Phone : 84 4 3555 1856 (Ext,101) Fax : 84 4 3555 1858
Email : phamhoi@gptkorea.com

GPT Representative Saudi Arabia

Office : Jubail, PO Box 11052 Jubail 31961
Phone : 966 3 3407940 Fax : 966 3 3407942

Office : Riyadh, Kingdom of Saudi Arabia
Phone & Fax : 966 11 4726187

Office : Jeddah, Kingdom of Saudi Arabia
Phone & Fax : 966 12 675 2903

