

CHOICE FOR SOLUTION

HONG SUNG

HONG SUNG PRECISION CO.,LTD





Greeting

HONG SUNG has grown up through consistent management innovation and technology development since the establishment is 1979.

Based on the experience and technical capability accumulated to date for the last 40 years in the precision machinery processing business, we have been expanding business in the fields at trustworthy hydraulic products, machinery switch.

As a result, we became total solution company to create best technologic value over just machine processing company.

1970~1990 Growth



We have established this beachhead and established solid foundations for the future success of the company over the course of 40 years in a methodical and calculated manner.

2000 Soaring



We established local corporations and venture companies in China to soar into the world.

2010~ Into the world



We envision a global world where there is continued growth, advanced business management, competent human resources and technologies.

> 1970

- Designated as a vendor for Yangji Metal
- Designated as a vendor for Sepoong Controls
- Designated as a vendor for Samsung
- Corning Microoptics
- Incorporated as Hong-Sung Precision Co., Ltd

> 1980

- Designated as a vendor for Goldstar
- Alps Electronics
- Currently the LG Innotek.

> 1990

- Hong-Sung established.

> 2000

- Established a Chinese subsidiary
- Certified with INNOBIZ
- Certified as a Venture Enterprise
- Acquired certification for Attached R&D Institute

> 2010

- Selected as an Export Partner for KEPKO
- Solenoid Valve for Gas Turbine Combustion Filter patented
- Limit Switch patented
- Registered as a Member of Export Council for KOMIPO
- Received the Grand National Productivity Award from the Minister of Trade, Industry & Energy
- Awarded the Winner Prize from the Korea Commission for Corporate Partnership in the Small-Medium-Large Enterprise Partnership Competition
- Designated as a Promising Export Firm

Major Product



> Limit switch



> Belt conveyor switch



> Solenoid valve



> Hydraulic valve



We have manufactured the products based on innovation and development during
40 challenging and pioneering years

> 2010

- Pluse Jet Solenoid Valve
- High Temperature & High Pressure Valve
- For High Temperature Limit Switch
- Belt Conveyor Switch
- Wireless IoT Solenoid Valve

> 2000

- Optical Communication component
- Small accuracy Motor
- Hydraulic Solenoid Valve
- Hydraulic Block

> 1990

- Special Audio Components
- CD-ROM Motor
- Computer Keyboard Switch
- Car Auto Window Actuator

> 1980

- Communication connector
- TV Automatic Channel Assembly

> 1970

- Electric Fan Motor
- TV hands on channel

Process



Research and Development Planning

- Project Selection
- Analysis of existing products and markets : Identification of problems



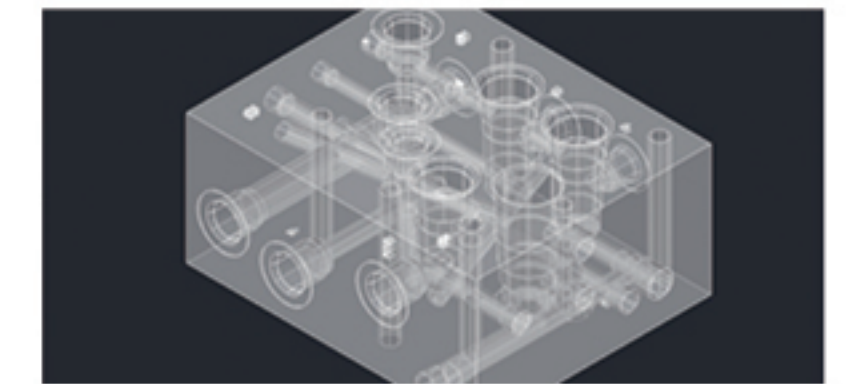
Design and Raw Material Input

- Design of 2D / 3D product
- Selection of materials



Preparation of Prototype and Production

- Determining manufacturing method
- Manufacturing of each process
- Post-processing (Electroplating/Finishing)



Precise Test and Performance Measurement

- Measurement and test
- Performance test



Mass Production and Actual Site Installation

- Mass production and assembly
- Delivery and field application of products



Overseas Activity



Cooperating Companies



> Construction



> Shipbuilding



> Electronic



> Automobile



> Hydraulic



> Defense industry



> Power generation



International Exhibition



Certificate



ISO 9001



ISO 14001



OHSAS 18001



ISO 37001

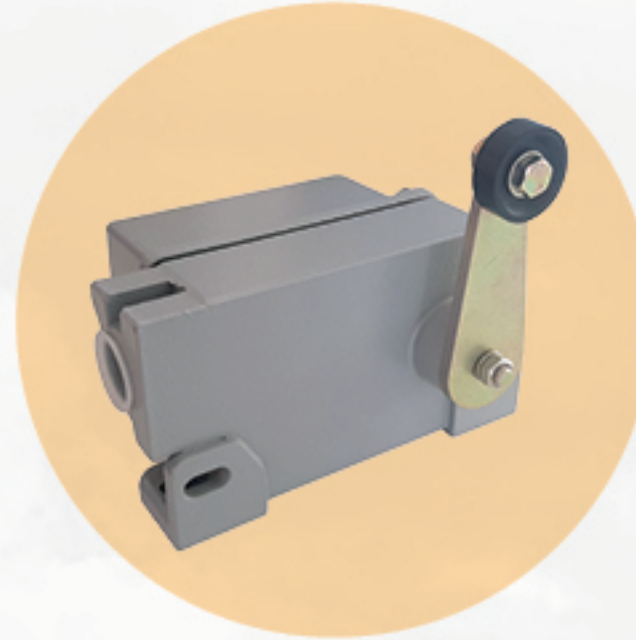




Pull rope switch



Roller lever switch



Belt alignment switch



IoT wireless solenoid valve



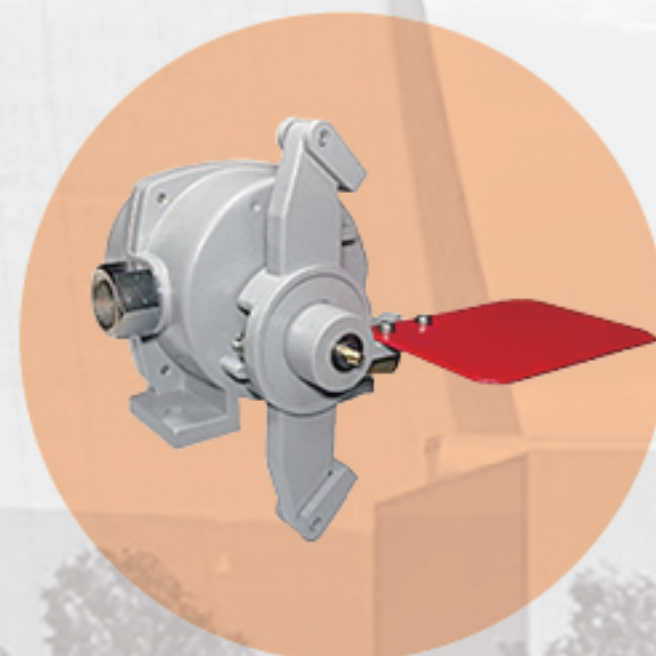
Pulse jet solenoid valve



Hydraulic valve & components



Limit switch



Pull cord switch



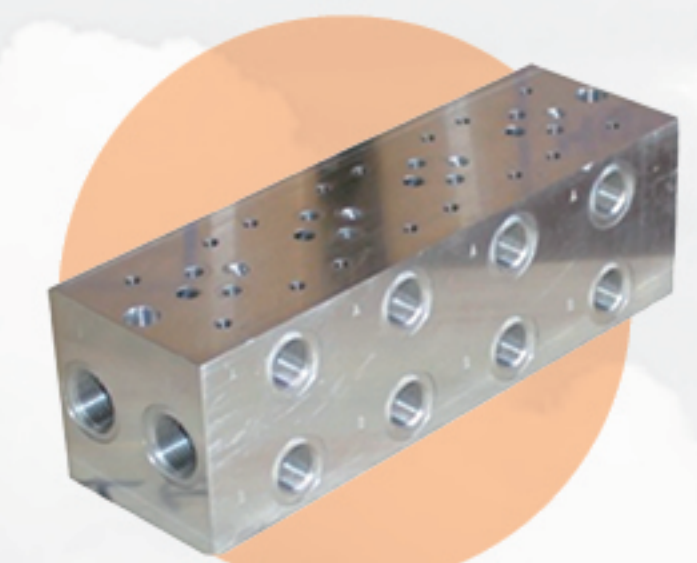
Speed control switch



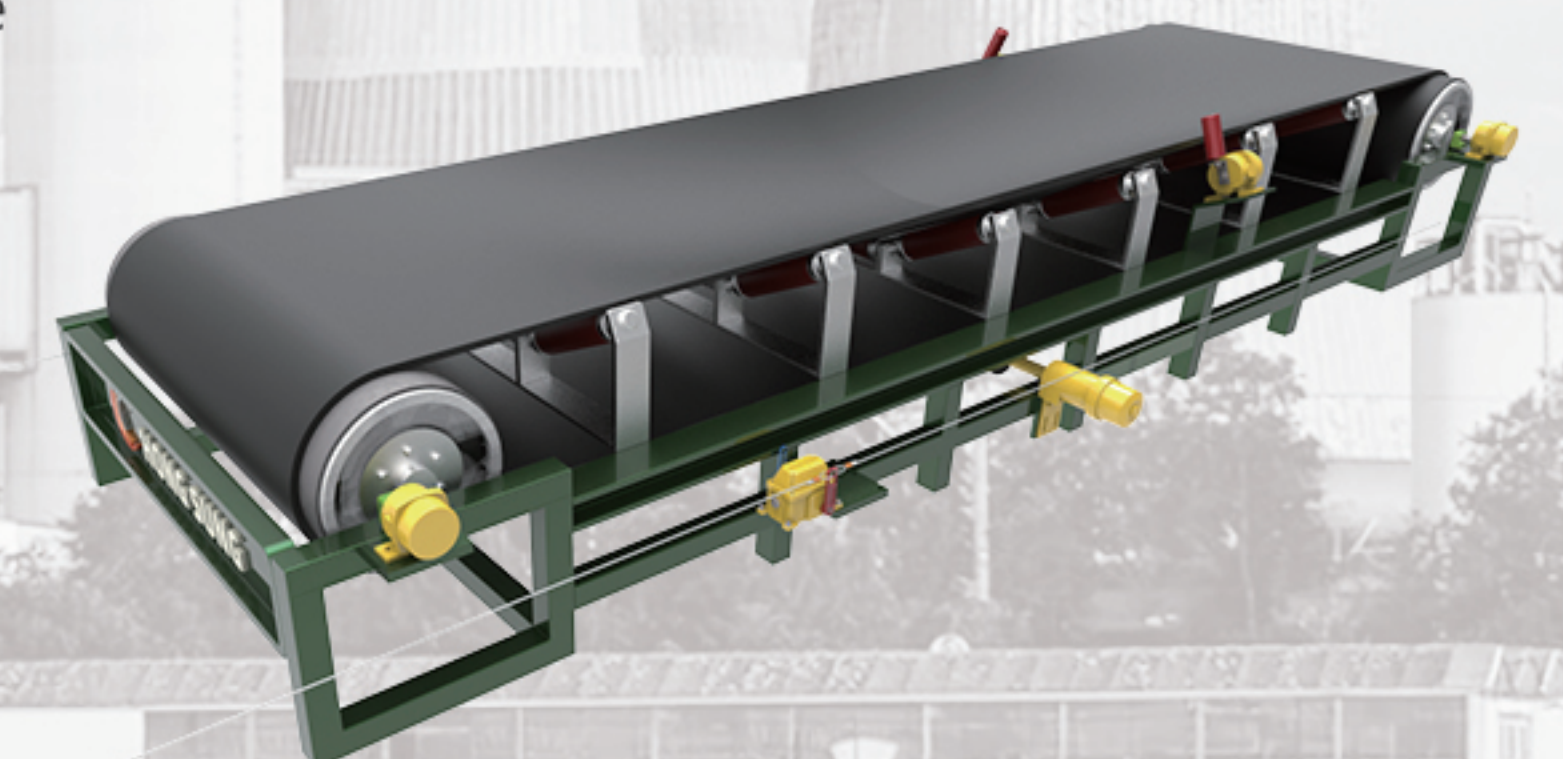
Tilt switch



Air&gas solenoid valve



Manifold block



Limit Switch

Limit Switch



Specification

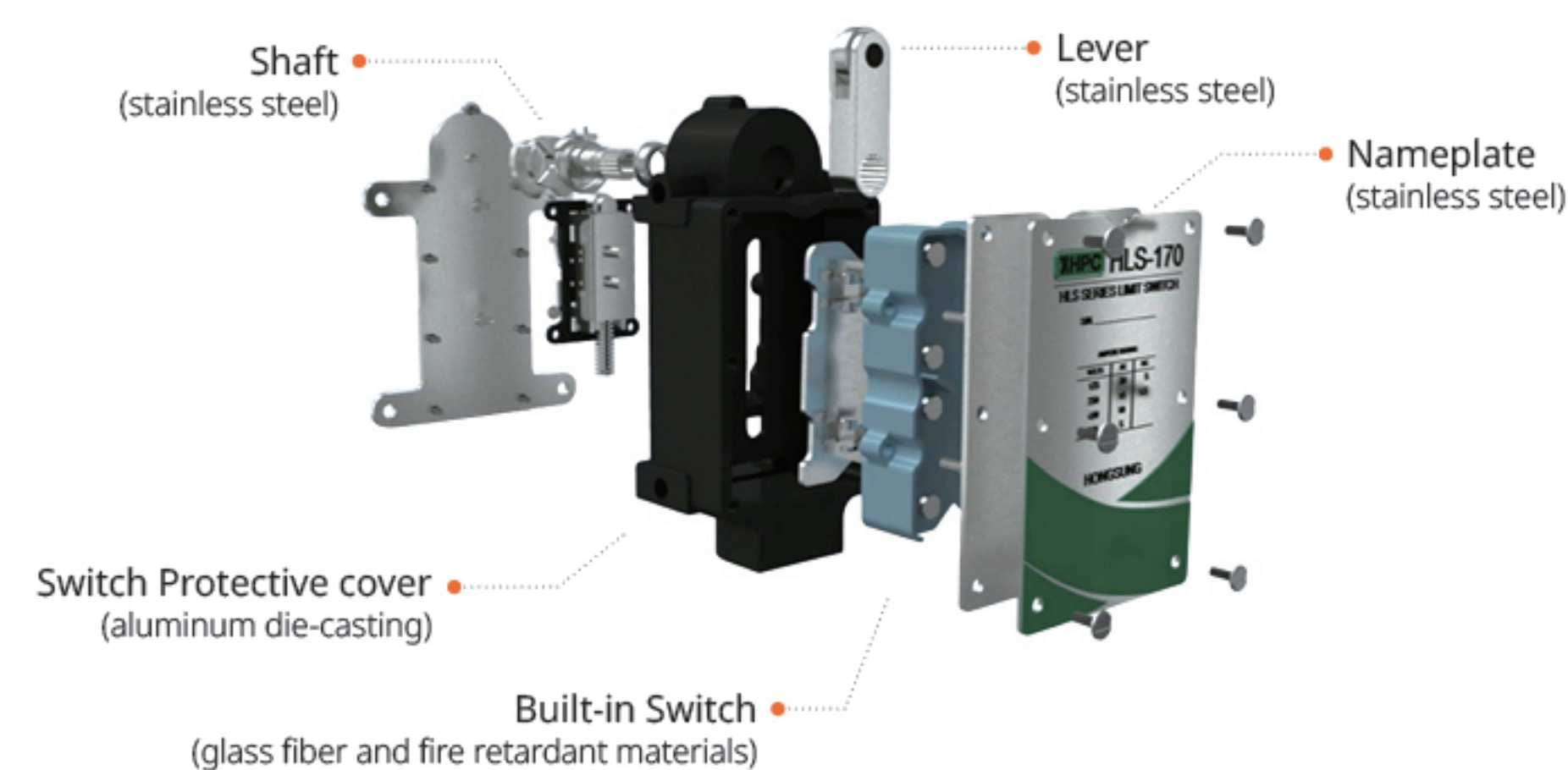
CONTACT CAPACITY	20A 125VAC / 15A 250VAC / 5A 125VDC / 1.5A 250VDC
PROTECTION	IP65
CONTACT RESISTANCE	MAX 25Ω
VIBRATION PROTECTION	5Hz~2KHz, 50G, 11ms
LIFE TIME	1 Mil Min
OPERATING TEMPERATURE RANGE	-10°C ~ +125°C
OPERATING HUMIDITY RANGE	20% ~ 85% RH

Installation

- Boiler feed water pump turbine area
- Ash processing equipment
- Control valve
- Desulfurization equipment



Features



- Heavy Duty Vibration & Temperature Resistant (Max 125°C)
- Its main body is made of aluminum die casting, making it sophisticated and highly accurate.
- The main parts are made of stainless steel, providing excellent hearing performance.
- The Fireproof with new material terminal (Nylon66)

Belt Conveyor Switch

Pull Rope Switch



HPC-101EXR
Explosion proof

- The switch can detect the situation if the rope is breakage or the tension is loose, the emergency stop operation can be performed.

Specification

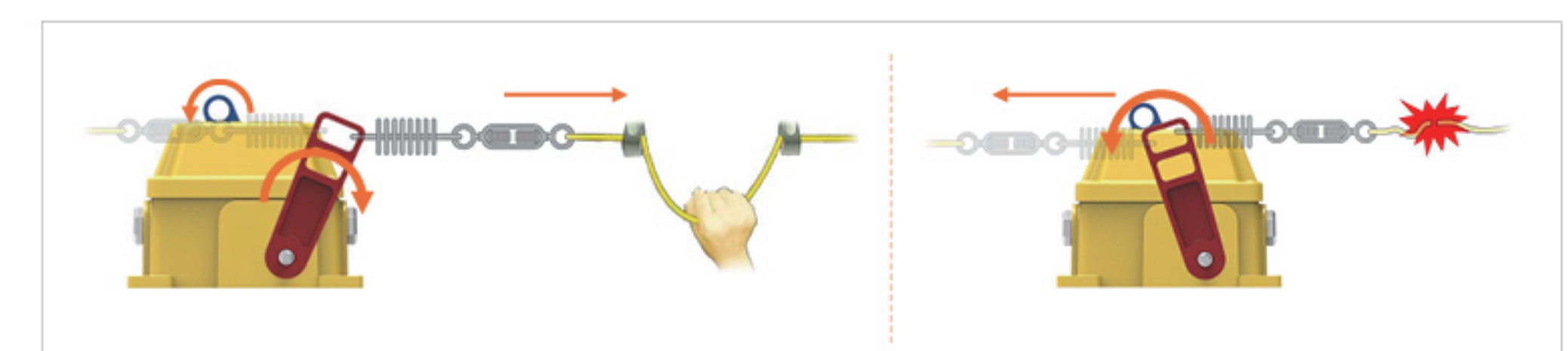
CONTACT CAPACITY	15A 125VAC / 10A 250VAC
CONTACTS	SPDT x 2EA
BODY	Aluminum diecasting
TYPE	Manual return
CABLE ENTRY	PF 3/4"

Installation

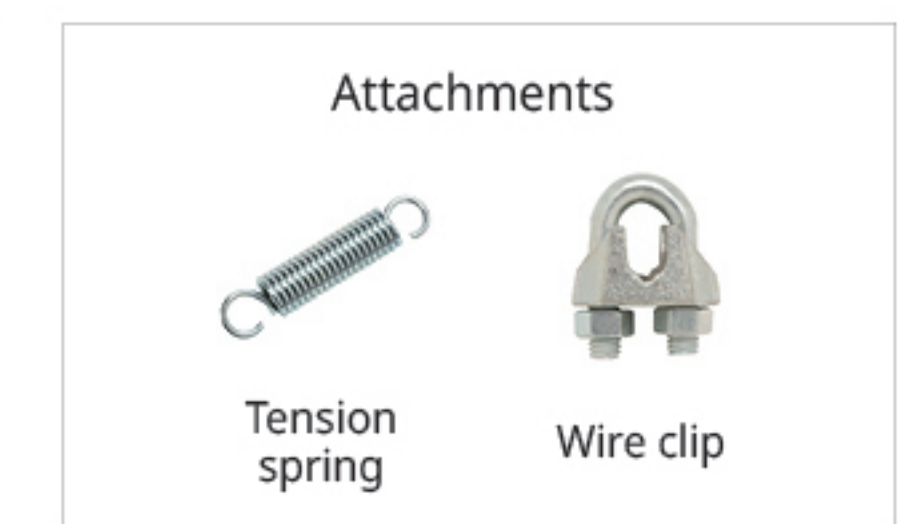


- When installing, the distance between the switches should not exceed a maximum of 25M.
- Install the eyebolt between the switches at intervals of 2.5 to 3M to prevent the wire from sagging.

Operation



- The tension springs provided on the both sides of the operation lever enable detection of wire rope breakage and tension.



- Return the reset lever to the center, and the operation lever will counter-rotate alongside for reset in the neutral state.

Belt Conveyor Switch



Pull Cord Switch

- Pull cord switch is an emergency stop switch that stops conveyor by pulling the wire rope when it is necessary to stop the belt conveyor while driving.
- As the switch is operated due to maintenance and accident in the line, and the identification plate rises to 90°, it is easy to visualize which switch is operated.

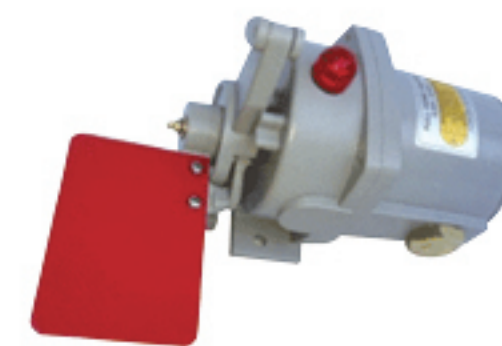
Type



HPC-101
Normal
(Non-Explosion proof)



HPC-101EX
Explosion proof

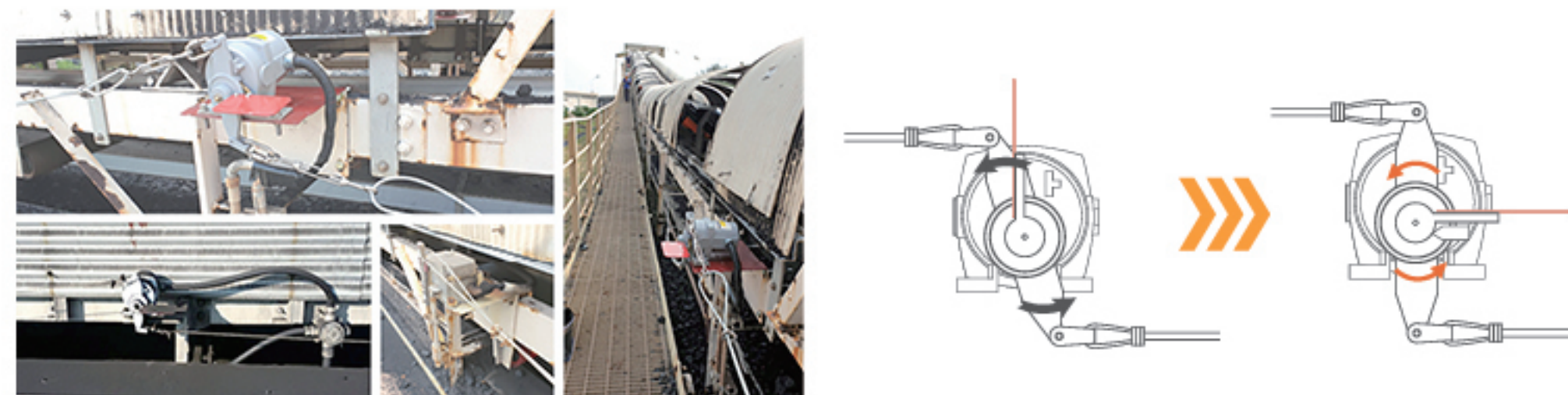


HPC-101EXL
Explosion proof
• Flickering LED lamp

Specification

CONTACT CAPACITY	15A 125VAC / 10A 250VAC / 0.6A 125VDC
PROTECTION	IP66
CONTACTS	SPDT x 2EA
REQUIRED FORCE OF PULL CORD	7 ± 1KG
TYPE	MANUAL RETURN
CABLE ENTRY	PF 3/4"×2EA WITH PLUG

Installation



- If there is space on either side of the conveyor belt at the construction site where this product is used, install both sides.
- If you are making a bracket to install the switch, refer to the product shape above.
- When installing, the distance between the switches should not exceed a maximum of 25M.
- Install the eyebolt between the switches at intervals of 2.5 to 3M to prevent the wire from sagging.
- Tie the wires securely into the switch lever hook with something like a wire clip.

Belt Conveyor Switch



Belt Alignment Switch

- This switch installs the belt alignment switch on both sides of the belt conveyor to stop conveyor when the belt is out of service. It is mainly used in steelmaking, cement, chemicals, and thermal power plants.

Type



HPC-102
Normal
(Non-Explosion proof)



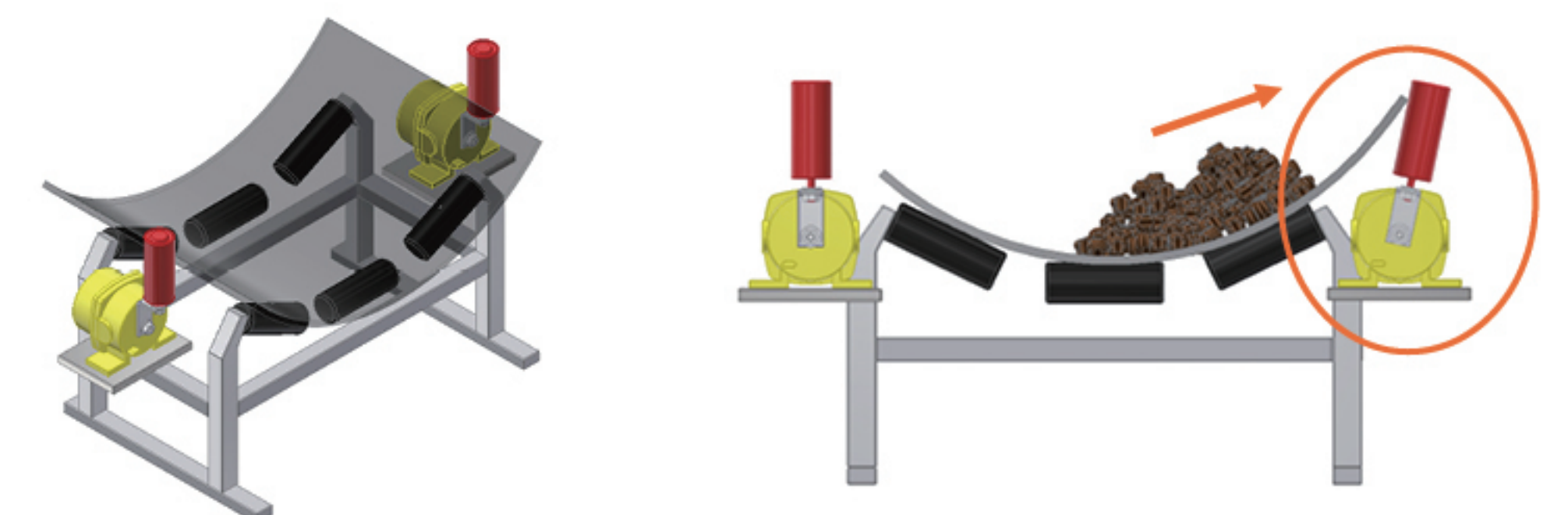
HPC-102EX
Explosion proof

Specification

CONTACT CAPACITY	15A 125VAC / 10A 250VAC / 0.6A 125VDC
PROTECTION	IP66
CONTACTS	SPDT x 2EA
REQUIRED FORCE OF PULL CORD	7 ± 1KG
TYPE	AUTOMATIC RETURN
CABLE ENTRY	PF 3/4"×2EA WITH PLUG

Installation

- This product must be installed as a pair at both ends of the conveyor belt.
- When installing the product, save some spaces between belt and roller.
- If you are making a bracket to install the switch, refer to the product shape above.



Belt Conveyor Switch



Speed Control Switch

- Speed control switch measures speed using a non-contact sensor. When the speed is out of the speed range, the output relay is activated to check whether the rotation speed is abnormalities. Switch turns off the power to make an emergency stop if any problem with the machine is detected.

Type



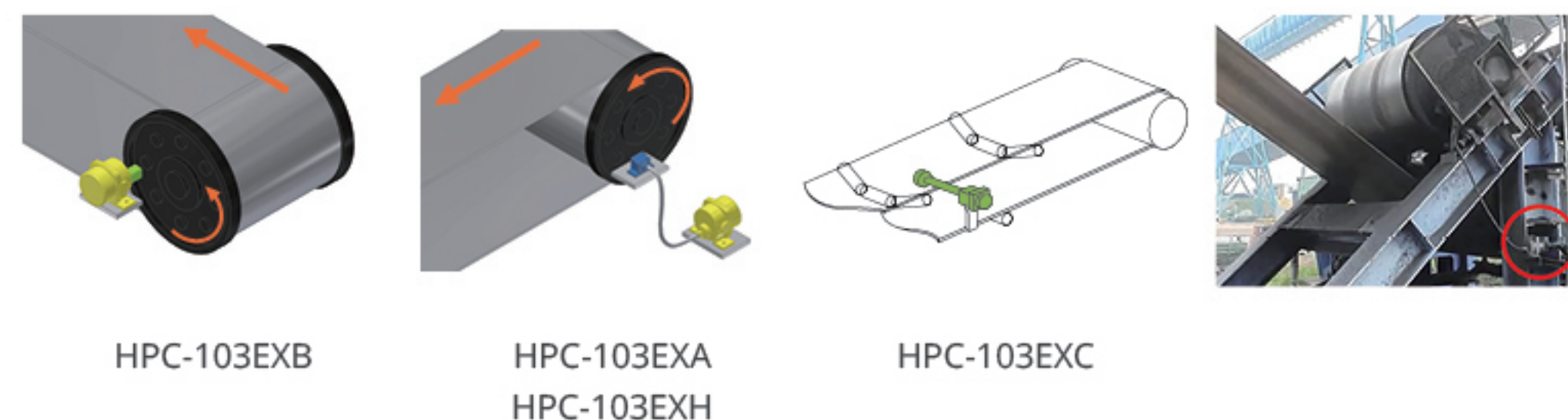
- | | | | |
|-------------------------------|-------------------------------|--|------------------------------|
| HPC-103EXB | HPC-103EXA | HPC-103EXH | HPC-103EXC |
| • Sensor Position : Assembled | • Sensor Position : Separated | • Sensor Position : Separated, For high temperature (Max. 120°C) | • Wheel Explosion Proof Type |

Specification

POWER	OUT POWER : 4W / OUT CURRENT : MAX 340mA OUT VOLTAGE : 12V / INPUT VOLTAGE : 90V~240V Free / 50~60Hz
CERTIFICATES	KOSHA (Ex tD A22 IP66 T85°C)
CONTACTS	SPDT x 2EA
CABLE ENTRY	PF 3/4"×2EA WITH PLUG
TIME DELAY	0~30 SEC
PROXIMITY SWITCH RANGE	20mm
CONTROL SPEED	1-9999 RPM

Installation

- Make sure that the distance between the rotator and the sensor is not more than 20mm.
- Install the rotor with a magnetic material so that it can be detected by the sensor.
- Do not set the axis of the rotator as the target of the sensor will fail if it is detected continuously.
- If you are creating a bracket on which to install the switch, refer to the Outside View above.



Belt Conveyor Switch



Roller Lever Switch

- The roller lever switch is a switch used for front and rear left movement control as the lever moves to the A.B contact point inside.

Type

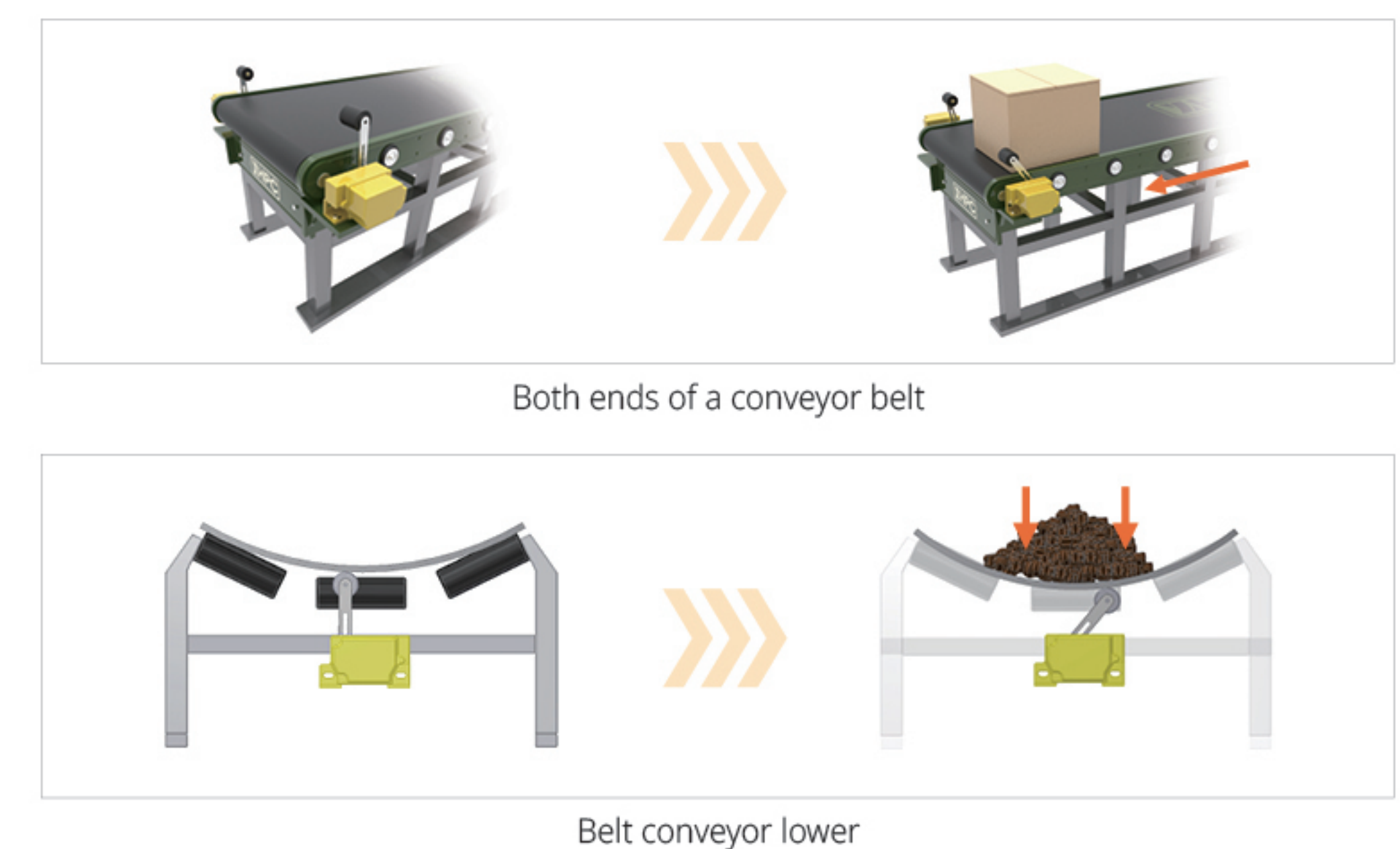


- | | | |
|-------------------|--------------------|---------------------------|
| HPC-107EXI | HPC-107EXA | HPC-102EX |
| Automatic return | Automatic return | Manual return |
| • Normal lever | • Adjustable lever | • U type lever |
| • 2NO 2NC | • 2NO 2NC | • SPDT x 2EA |
| | | • PF 3/4" x 2EA WITH PLUG |

Specification

CONTACT CAPACITY	10A 125VAC / 6A 250VAC
PROTECTION	EXPLOSION PROOF(Ex tD A22 IP66 T85°C)
CONTACTS	DPST
CABLE ENTRY	PF 3/4"

Installation



Both ends of a conveyor belt

Belt conveyor lower

- If you are creating a bracket on which to install the switch, refer to the Outside View above.
- It is recommended to be secured with M8 bolts when considering the size of the hole.

Level Switch

Tilt Switch

- The tilt switch is a level detection switch that detects the upper limit of the powder or solid storage material by hanging it from the top of the tank, silo, hopper, etc.
- The body of the product may be suspended from the stainless steel chain and suspended to the desired height.

Type



Specification

CONTACT CAPACITY	12.5A 120VAC
PROTECTION	IP66
CONTACTS	SPST
INCLINATION OF OPERATING	25° ±3°
CABLE	VCTF 1.5mm ² ×2C (5M)
CHAIN	SUS304 Ø5×2M

Installation Environment

- Clinker silo
- Gravel/sand silo
- Cement silo
- Coal/coke silo
- Ore silo
- Aggregate bin



Operation



- It can be attached to the top of a tank, silo, hopper, etc. It can be used at the desired height.
- It is activated when the load in the loader is stacked to the switch and the switch is tilted to 25° ± 2°.

Solenoid Valve

IoT Wireless Solenoid Valve

- Low-maintenance cost.
- Low electricity consumption due to the use of the exclusive battery for valve.
- The on/off state is maintained by a single instant power supply.



Specification

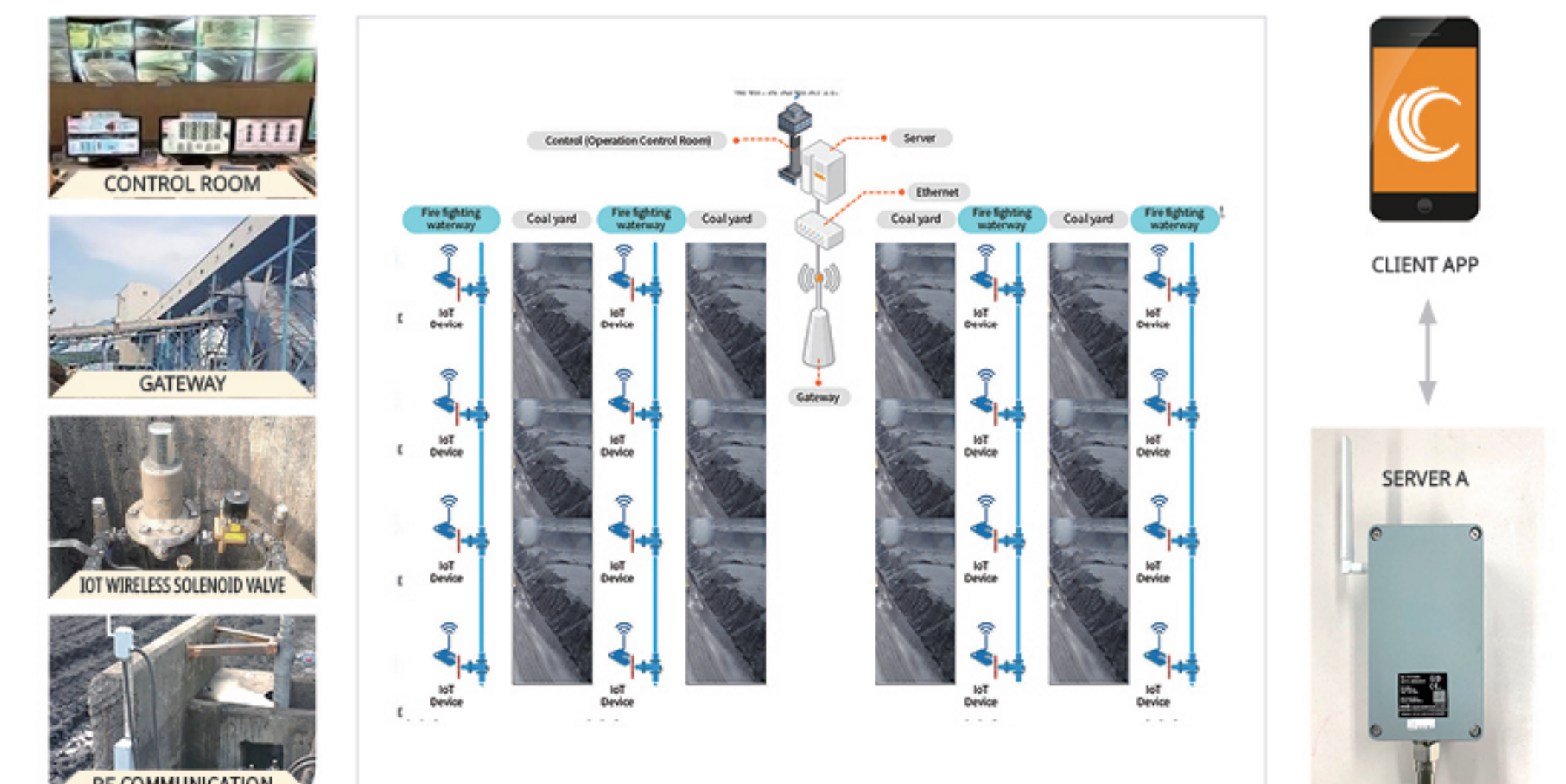
Solenoid valve		RF & Wireless communication	
Solenoid coil	DC 6V, 1A (2ea)	Distance	1km (max)
On/Off time	1 sec. (max)	Communication	Sub 1Ghz
Stroke	2mm	Power	DC 3.3V
Orifice	10mm	Active	2.5mA
Operation type	On/Off 2way	Sleep/Standby	800nA
Port size	PT 3/8	Function	Bluetooth

Installation Environment

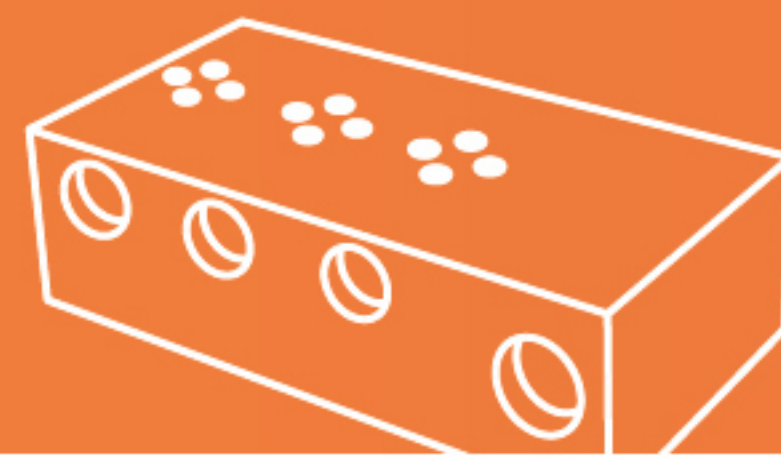


- Coal-fired power station (coal yard)
- Large arable land
- Vinyl greenhouse and cultivation facilities

Application



Manifold Block



Application

- Utilized in the whole industry as hydraulic valves for construction equipment, agricultural equipment parts and industrial equipment parts.
- Utilized for pressure control and flow control in the pneumatic and hydraulic sector for types of cartridge valves.
- Served as a bridge to open the flow path of all sorts of solenoid valves.

Features



- Excellent space application (control several valves in a small space)
- Available for accurate control of fluid flow
- Control of loss and resistance of fluids in valves

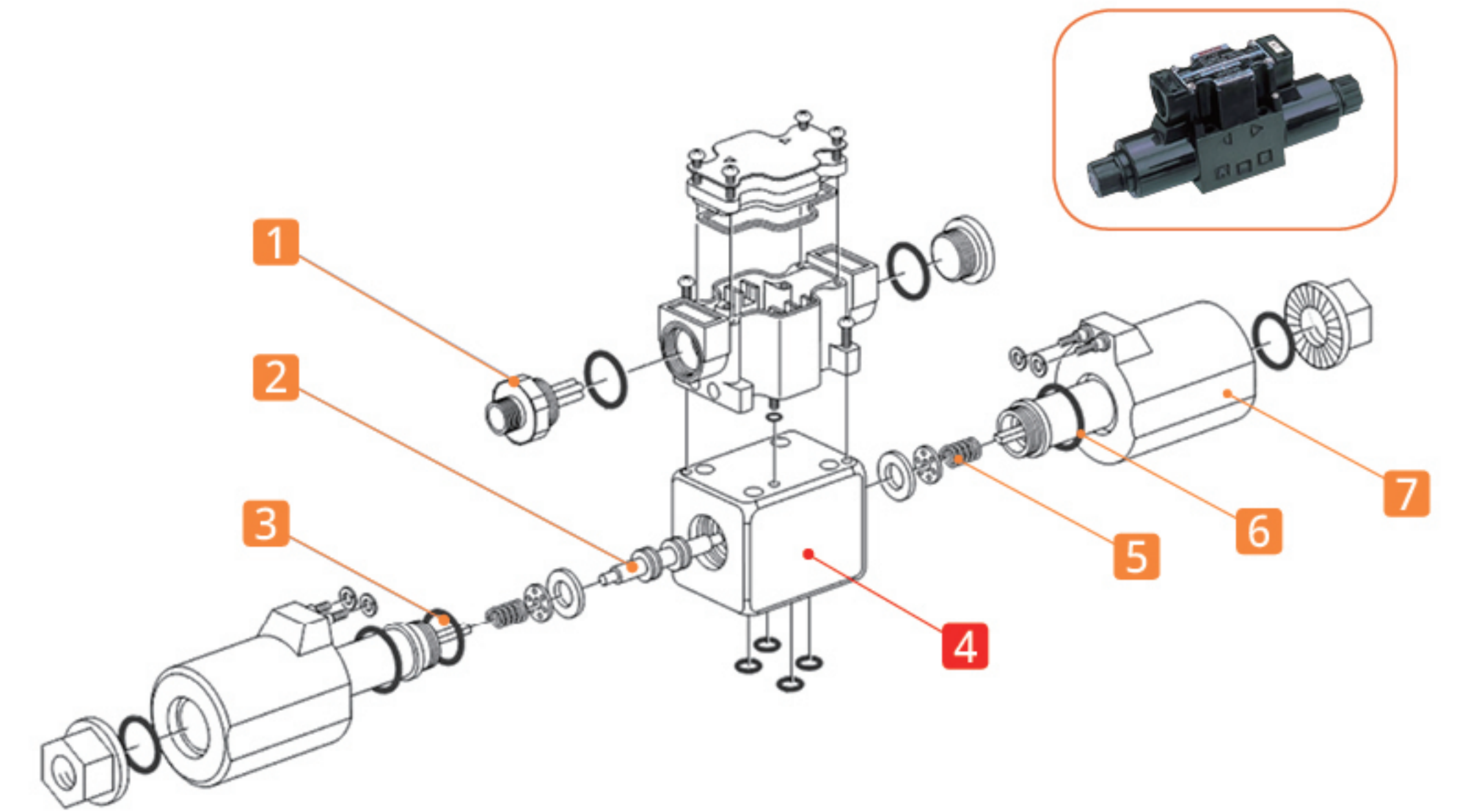
Product Information

- Released in various types depending on the requests of users
- Material spec : FC25, FCD45, AL6061, FCU340, S45C, etc
- Finish : Surface treatment of clear anodizing



Hydraulic Valve & Components

No	NAME
1	PLUG
2	SPOOL
3	ROD
4	BODY
5	SPRING
6	SOLENOID GUIDE
7	SOLENOID COIL



Contact Us



BUSINESS Solenoid Valve, Limit Switch

ADDRESS Singi-Ro 64-1, Yangsan city, Gyeongnam, Korea, 50576

TEL +82) 55-385-3804

FAX +82) 55-385-4544

HOMEPAGE www.i-hpc.com

E-MAIL hpc@i-hpc.com / joinhpc@gmail.com

www.i-hpc.com



HONGSUNG PRECISION CO.,LTD

Singi-Ro 64-1, Yangsan city, Gyeongnam, Korea, 50576

Tel +82-55-385-3804 **Fax** +82-55-385-4544