

LED carbon heat mat

for anti-slip pad in winter

-Auto Heating > Eliminating snow and frost

-Function of LED > Effect of visualization



LED carbon heat mat

- ☒ Auto Heating > Eliminating snow and frost
- ☒ Function of LED > Effect of visualization
- ☒ Function of power saving (using a temperature sensor).



3pieces
for 1 set

[Heating mat] 3pieces for 1 set

[Spec]

Width: 1,000mm

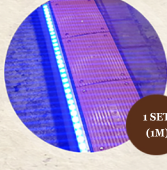
Length: 250mm

Thickness: 23mm (Mat 18mm, Non-slip 5mm)

[Power consumption]

Voltage: 220VAC (100W/1SET)

* Each bus stop, installation about 5set



1 SET
(1M)

[LED LIGHT] 1 SET (1M)

[Spec]

Width: 1,000mm

Length: 25mm

Thickness: 23mm

[Power consumption]

12VDC 0.2Amp

* Each bus stop, installation about 5set

How-to Install LED Carbon Heat Mat



CHECK 01

Cutting boundary stones (Thickness 18mm)



CHECK 02

Heating mat electrical connection and fixing



CHECK 03

Installation controller and supply of electricity



CHECK 04

fixing non-slip covers and cleaning edges

What is the principal of LED carbon heat mat?

Emitting far infrared ray combined with carbon heating net

Expectations of LED carbon heat mat

Visualization of
boundary

:



A nti-slip



Visualization of
boundary

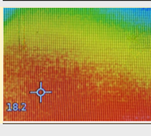
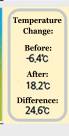
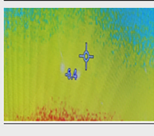


Visualization of
Bus stop

BEFORE

VS

AFTER



Examples

01



02



03



contact us

여수기업
(유)아가페테크



Office : #111, Sanga 4-dong, 4703, Moak-ro,
Wansan-gu, Jeonju-si, Jeollabuk-do, 55135, Republic of Korea
tel : 82-63-232-1102