

Table of Content

- Steel Materials
 - PLATES _____ 2
 - FORGING _____ 4
 - PIPES & TUBING _____ 5
 - BAR & EXTRUSIONS _____ 6
- Piping Materials
 - FITTINGS _____ 7
 - FLANGES _____ 8
 - FASTENERS _____ 9
- Electrical Materials
 - ELECTRICAL EQUIPMENT ____ 10
- Equipment
 - WATERJET EQUIPMENT ____ 11
 - WATER BLASTING TOOLS_ 12
 - VERTIDRIVE ROBOTS____ 13
 - AQUAJET ROBOTS _____ 14
 - CENRIFUGAL PUMPS _____ 15
 - PIPELINE INSPECTION _____ 16
 - TANK CLEANING _____ 17
 - STREAMLINE PUMPS____ 18
 - ENGINES _____ 19
 - INSTRUMENT FITTINGS ____ 20





Plates

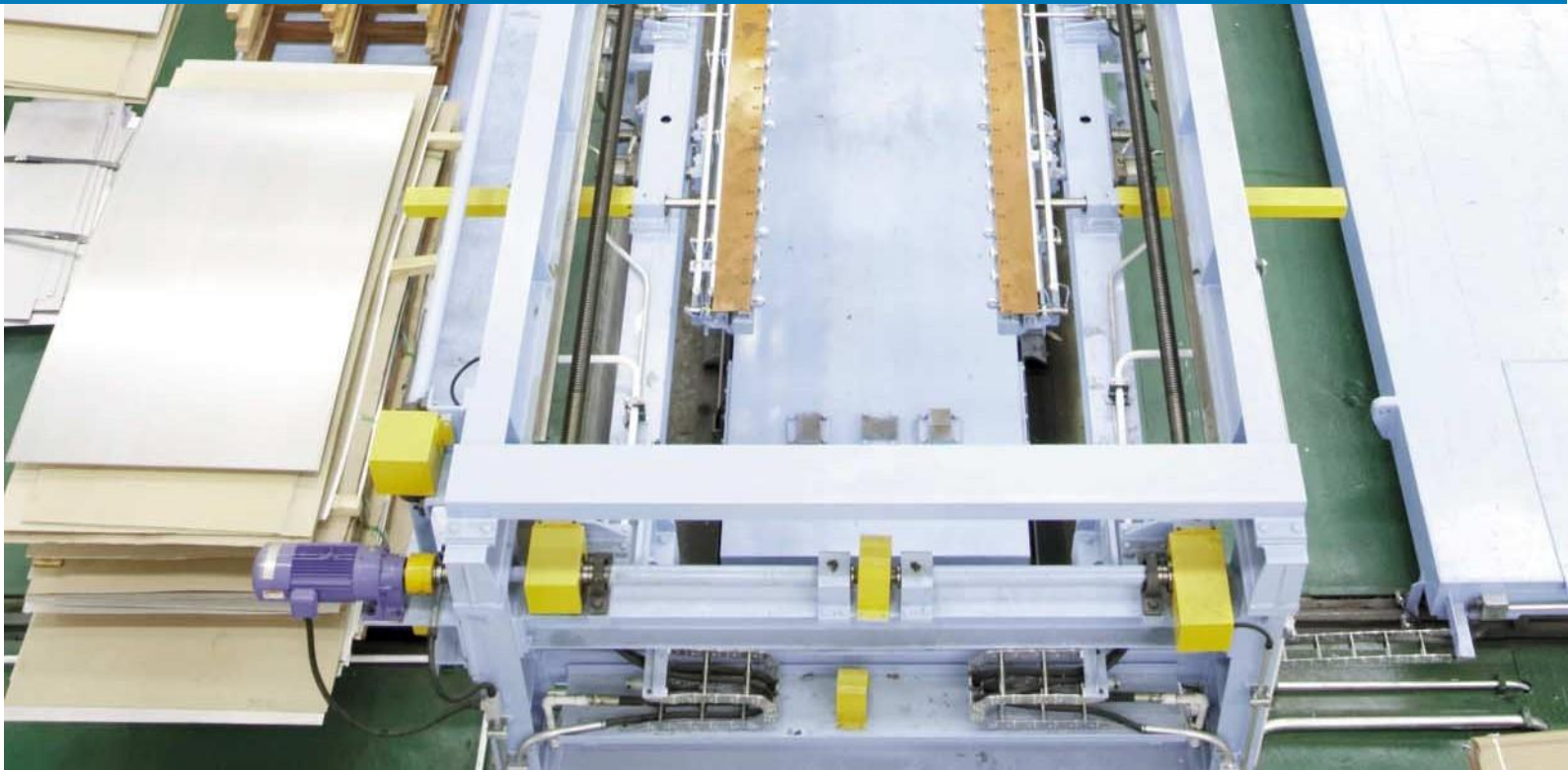
SUITABLE FOR ALL KINDS OF CODE,
THE BEST QUALITY,
WITH FASTEST DELIVERY

Cold Rolled Coils & Sheets

Cold-rolled products possess various surfaces according to the second surface fabrication process, and the surfaces are outstanding and the workability is superior; applications range from automobiles, refrigerators, washers to industrial apparatus and equipment, construction structures, etc.

Heavy Plates

Stainless plates are relatively thick products produced through four-high reversing strip mill having a thickness of 6 mm or higher, and are used for making general welded structural products, bridges, industrial machineries, marine structures, etc.



Chemical Composition

		NOMINAL CHEMICAL COMPOSITION, WT. PCT. *						OTHER DESIGNATION SYSTEMS				
		Steel Name	C	N	Cr	Ni	MO	Other	EN	DIN	ASTM	UNS No.
General Service and Wet Corrosion	Austenitic	201	0.05	0.15	17	5	—	Mn	1.4372	—	201	S20100
		XM-19	0.05	0.30	22	13	2	Mn, Cb, V	—	—	S20910	S20910
		301	0.10	0.04	17	7	—	—	1.4310	1.4310	301	S30100
		302	0.07	0.06	17	8	—	—	1.4319	1.4319	302	S30200
		303, 303 HST	0.06	0.05	17.5	8.1	—	S	1.4305	1.4305	303	S30300
		304	0.04	0.06	18.2	8.1	—	—	1.4301	1.4301	304	S30400
		304L	0.02	0.06	18.2	8.2	—	—	1.4306	1.4306	304L	S30403
		304LN	0.02	0.14	18.2	8.5	—	—	1.4311	1.4311	304LN	S30453
		304N	0.04	0.14	18.5	8.5	—	—	1.6907	1.6907	304N	S30451
		305	0.02	0.02	18	11.5	—	—	1.4303	1.4303	305	S30500
		308	0.08	—	19.5–22.0	9.0–11.0	0.75	0.30–0.65Si	1.4303	1.4303	S30880	S30880
		308L	0.02	0.05	20	11	—	—	199L	—	308L	S30883
		308LSi	0.03	—	19.5–22.0	9.0–11.0	0.50	0.65–1.00Si	199LSi	—	S30880	S30880
		316	0.04	0.04	16.8	10.7	2	—	1.4401	1.4401	316	S31600
		316	0.04	0.06	17	11	2.8	—	1.4436	1.4436	316	S31600
		316H	0.04–0.10	—	16.0–18.0	10.0–14.0	2.0–3.0	—	1.4401/1.4919	—	S31609	S31609
		316L	0.02	0.06	16.2	10.2	2	—	1.4404	1.4404	316L	S31603
		316L	0.02	0.06	16.2	10.2	2.8	—	1.4432	1.4432	316L	S31603
		316LN	0.02	0.14	16.2	10.2	2	—	1.4406	1.4406	316LN	S31653
		316Ti	0.04	0.01	17	11	2	Ti	0.4571	1.4571	316Ti	S31635
		317L	0.02	0.08	18.3	11.5	3	—	1.4438	1.4438	317L	S31703
		317LM	0.02	0.08	19.3	13.7	4.3	—	1.4439	1.4439	317LM	S31725
		317LMN	0.02	0.14	19.3	13.7	4.3	—	1.4439	1.4439	317LMN	S31726
		321	0.04	0.01	17.3	9.2	—	Ti	1.4541	1.4541	321	S32100
		347	0.04	0.04	17.3	9.1	—	Cb	1.4550	—	347	S34700
		Alloy 20	0.01	0.06	20	33	2	Cu, Cb	—	—	N08020	N08020
		904L	0.01	0.06	20	25	4.5	Cu	1.4539	1.4539	904L	N08903
		254 SMO	0.01	0.20	20	18	6.1	Cu	1.4547	—	S31254	S32154
		654 SMO	0.01	0.50	24	22	7.3	Mn, Cu	1.4652	—	S32654	S32654
	Duplex	LDX 2101	0.03	0.22	21.5	1.5	0.3	Mn	1.4162	—	S32101	S32101
		SAF 2304	0.02	0.10	23	4.8	0.3	—	1.4362	1.4362	2304	S32304
		2205 Duplex Two	0.02	0.17	22	5.5	3	—	1.4462	1.4462	2205	S32205/S31803
		SAF 2507	0.02	0.27	25	7	4	—	1.4410	—	2507	S32750
	Other	410	0.12	—	12	—	—	—	1.4006	1.4006	410	S41000
410S		0.06	—	12	—	—	—	1.4000	1.4000	410S	S41008	
416		0.12	—	12	—	—	S	1.4005	1.4005	416	S41600	
430		0.04	—	16.5	—	—	—	1.4016	1.4016	430	S43000	
430F		0.12max	—	16.0–18.0	—	—	0.15min	1.4104	1.4104	S43020	S43020	
434		0.06	—	17	—	1	—	1.4113	—	434	S43400	
439		0.03	—	18	—	—	Ti	1.4510	—	439	S43035	
17–4		0.04	—	15.3	4.8	—	Cu, Cb	1.4542	1.4542	630	S17400	
17–7	0.05	—	16.3	7.0	—	Al	1.4568	1.4568	631	S17700		
Heat Resisting	Austenitic	304H	0.05	0.06	18.2	8.1	—	—	1.4948	1.4948	304H	S30400
		321H	0.05	0.01	17.3	9.2	—	Ti	1.4878	1.4878	321H	S32100
		347H	0.04–0.10	—	17.0–20.0	9.0–13.0	—	0.05min 0.00max	1.4961	1.4961	S34709	S34709
		309H	0.04–0.10	—	22.0–24.0	12.0–16.0	—	—	—	—	S30909	S30909
		309S	0.06	0.08	22.2	12.2	—	—	1.4833	1.4833	309S	S30908
		310H	0.04–0.10	—	24.0–26.0	19.0–22.0	—	—	—	—	S31009	S31009
		310S	0.05	0.06	25.2	19.2	—	—	1.4845	1.4845	310S	S31008
		153 MA	0.05	0.15	18.5	9.5	—	Si, Ce	1.4818	—	S30415	S30415
		253MA	0.09	0.17	21	11	—	Si, Ce	1.4835	—	S30815	S30815
		353MA	0.05	0.16	25	35	—	Si, Ce	1.4854	—	S35315	S35315

Characteristics and Use of Products

Div.	EN	ASTM	UNS	Particular features	Example applications
Martensitic	1.4006	410	S41000	Good quenchability. Delivery possible in the quenched conditio	crushers - aeronautical engineering - distillation column plates
	1.4021	420	-		cutting tools - cutlery - mechanical parts - building tools
	1.4028	420	S42000		cutlery - cutting tools - wear components
	1.4419	-	-		cutlery - cutting tools - building tools
	1.4034	-	-		cutlery - surgical implements
	1.4116	-	-		cutlery - cutting tools - building tools
Ferritic	1.4	410S	S41008	high temperature oxidation resistance up to 650℃	maintenance parts - finned tubes - distillation column plates
	1.4512	409	S40900	good high temperature oxidation resistance	automobile exhaust systems
	1.4003	-	S41003	grade for welded structures	containers - railway vehicles - hoppers - industrial equipment
	1.4016	430	S43000	bright annealed for appearance-sensitive parts - F 18 for coin blanks	household equipment - decorative components - appliances - tableware
	1.451	430Ti	S43036	titanium improves weldability and cold formability	appliances - sinks - tubes - burners
	1.451	439	-	complies with the AISI 439 standard	hot water tanks - sugar refinery tubing
	1.4113	434	S43400	molybdenum enhances the corrosion resistance	decorative automobile profiles
	1.4017	-	-	high mechanical strength after quenching and cold working	conveyor belts
	1.4509	-	S43932	improved mechanical strength at high temperatures	exhaust systems - catalytic converters - burners
	1.4526	436	S43600	attractive appearance after deformation, without roping	exhaust systems - automobile beading - cooking utensils - domestic appliances
	1.4521	444	S44400	resistance to pitting corrosion identical to that of 18.11 ML (316L)	hot water tanks - boilers - fume ducts - various heat exchangers
Austenitic	1.431	301	S30100	cold working grade	springs - mechanical components
	1.4318	301LN	S30103	higher strength in the cold worked condition	railway vehicles, structural applications
	1.4301	304	S30400	the basic low carbon austenitic grade	tableware - cooking utensils - decoration - collective catering
	1.4301	304	S30400	extra deep drawing grade	sinks - dishwashers - pressure cookers - champagne buckets
	1.4307	304L	S30403	very low carbon grade - good weldability	boilerwork - heat exchangers - expanded metal - nuclear engineering
	1.4541	321	S32100	titanium-stabilized - corrosion resistance in weld zones - creep strength	tubes - aeronautical engineering - boilerwork
	1.4303	305	S30500	deep drawing - non-magnetic	electronic components
Molybdenum containing austenitic	1.4401	316	S31600	molybdenum-containing austenitic grade	tubes - boilerwork - road transport tanks - hot water tanks
	1.4404	316L	S31603	very low carbon molybdenum-containing grade - good weldability	tubes - boilerwork - road transport tanks - hot water tanks (large thicknesses)
	1.4435	316L	S31603	high molybdenum very low carbon grade - improved corrosion resistance + weldability	tanks for chemicals and foodstuffs - marine engineering applications
	1.4432	316L	S31603	idem - slightly lower Ni content	
	1.4571	316Ti	S31635	titanium-stabilized grade for welding applications	chemical and oil industry applications, high temperatures
	1.4438	317L	S31703	3% Mo grade - improved corrosion resistance	off-shore structures, tanks for chemicals and foodstuffs - marine engineering
Heat resisting steels	1.4828	-	-	high temperature oxidation resistance up to 950℃	heating equipment
	1.4833	309S	S30908	high temperature oxidation resistance up to 1050℃	heating element sheaths
	1.4845	310S	S31008	high temperature oxidation resistance up to 1100℃	furnace equipment



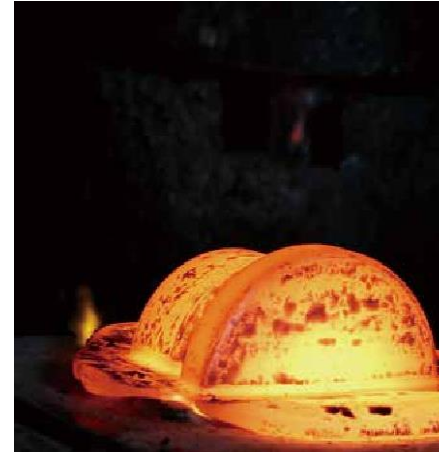
Raw Materials



Material Test



Material Cutting



Forging



Heat Treatment



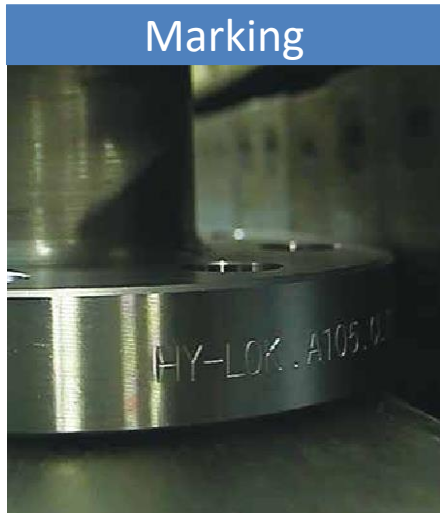
Machining



Inspection



Cleansing



Marking



Painting



Pressure Test



Packing

Forging For Special Metal

**INTELLIGENT, FLEXIBLE, RUGGED
WITH TOTAL INSPECTION PRODUCTIVITY**

Manufactures Thousands of Products Through the Experts and Excellent Facilities.
These products have been designed based on 20+ years of experience, indepth knowledge and customer feedback.

The Sunjin P&S's diverse standard and special products are designed and produced carefully by strict production standard. Sunjin P&S is striving to manufacture reliable products for customer's satisfaction.

The Best in Metals, Worldwide.

Sunjin P&S carefully selects superior quality metals products from leading manufacturers. We also enjoy supply relationships with leading worldwide sources. Regardless of the manufacturer, Sunjin P&S manages supplier qualification, order placement and delivery schedules. In addition, we coordinate with manufacturers to ensure on-time delivery.

Pipe & Tubing

PROVEN EXPERIENCE.
CERTIFIED QUALITY.
DEPENDABLE SERVICE.



PIPE

MATERIALS	GRADES/ALLOYS	SIZE RANGES
Aluminum Alloys	5083, 5086, 6061, 6063, Construction Grades, Handrail, Drawn, Extruded, Port Hole Die, Seamless, Structural	Pipe Sizes - 1/8"NPS to 12"NPS Schedules from 10 to 80
Stainless Steel	304, 304L, 316, 316L, 2205, 321, 347, 446, Seamless, Welded, As Welded, Brewery Quality	Pipe Sizes - 1/8"NPS to 30"NPS Schedules from 5 to XXH
Nickel & High Performance Alloys	200, 400, 600, 601, 625, 800, 800H, 800HT, C276, Alloy 20, Seamless, Welded	Pipe Sizes - 1/8"NPS to 8"NPS Schedules from 10 to XXH
Carbon & Alloy Steel	Black, Line, Seamless, Structural, ERW	Pipe Sizes - 1/8"NPS to 12"NPS Schedules from 10 to 80



TUBING

MATERIALS	GRADES/ALLOYS	SIZE RANGES
Aluminum Alloys	2024, 3003, 5052, 6061, 6063, 7075, Aircraft, Commercial, Construction, Structural, Mechanical, Drawn, Extruded, Ornamental, Rounds, Rectangles, Squares	Outside Diameters - 1/8" to 16" Wall Thickness' from .020" to 2.000"
Stainless Steel	303, 304, 304L, 316, 316L, 321, 347, 17-4, 15-5, Aircraft, Commercial, Heat Exchanger, Hollow Bar, Hypodermic, Instrumentation, Mechanical, Sanitary, Seamless, Welded and Drawn, As Welded, Ornamental, Round, Rectangular, Square (Mill and Polished Finish)	Outside Diameters - .031" to 12" Wall Thickness' from .004" to 2.000"
Nickel & High Performance Alloys	200, 400, 600, 601, 625, 800, 800H, 825, C276, 21-6-9, Alloy 20, Aircraft, Commercial, Seamless, Welded	Outside Diameters - .031" to 7" Wall Thickness' from .007" to 1-1/2"
Titanium	CP, 3AL-2.5V, 15-3-3-3, GR2, 6AL-4V, Ducting	Outside Diameters - 1/4" to 8" Wall Thickness' from .016" to .260"
Carbon & Alloy Steel	Low Carbon, 1020, 1026, 4130, 4135, 4140, 4340, 8620, 52100, Aircraft, Mechanical, Hydraulic, ERW, DOM, Seamless, Welded, As Welded, Round, Rectangular, Square, Streamline, Structural Shapes	Outside Diameters - .125" to 12" Wall Thickness' from .020" to 3.000"

The Best in Metals, Worldwide.

Sunjin P&S carefully selects superior quality metals products from leading manufacturers. We also enjoy supply relationships with leading worldwide sources. Regardless of the manufacturer, Sunjin P&S manages supplier qualification, order placement and delivery schedules. In addition, we coordinate with manufacturers to ensure on-time delivery.

Bar & Extrusions

PROVEN EXPERIENCE.
CERTIFIED QUALITY.
DEPENDABLE SERVICE.



ROD, BAR & WIRE			
MATERIALS	GRADES/ALLOYS	SIZE RANGES	
Aluminum Alloys	1100, 2011, 2024, 2219, 6061, 6063, 6101, 7075	Rounds - 1/8" to 16" Hex - 1/4" to 2-3/4" Squares - 1/4" to 6" Flats - 1/8" to 5"	
Stainless Steel	303, 304, 304L, 309S, 316, 316L, 321, 347, 410, 416, 17-4, 15-5, 13-8, Equal & Unequal Angles	Rounds - 1/8" to 16" Hex - 1/4" to 2-1/2" Squares - 1/4" to 3" Flats - 1/8" to 3" Edge Conditioned	
Nickel & High Performance Alloys	200, 330, 400, 600, 601, 625, 718, X750, 800, 800H, 800AT, 825, C 276, HX, K500, Alloy 20	Rounds - 3/16" to 11" Edge Conditioned	
Titanium	6AL-4V	Rounds - 3/8" to 6-1/4"	
Carbon & Alloy Steel	300M, 4130, 4140, 4150, 4340, 6150, 8620, 8740, 9310, 52100	Rounds - 1/8" to 12" Hex - 1/4" to 1-1/8"	

EXTRUSIONS			
MATERIALS	GRADES/ALLOYS	SIZE RANGES	
Aluminum Extrusions	1100, 2014, 2024, 2224, 5052, 5083, 5086, 6061, 6063, 7050, 7075, 7150, 7178	Aircraft Extrusions by Mfg Part Numbers, Angles, Architectural, A.N.D., H-Beams, I-Beams, Channels, Structural, Shapes, Wide Flange, Zee	



Fittings

INTELLIGENT, FLEXIBLE, RUGGED
WITH TOTAL INSPECTION PRODUCTIVITY

STAINLESS STEEL

EN 10253-4 TYPE A and TYPE B ASME B16.9

Elbows

- 2D, 3D, 5D
- Short Radius, Long Radius
- 45°, 90°, 180°

Reducers

- concentric
- eccentric

Tees

- equal
- reduced

Caps

Range of Sizes

- 10.0 mm - 323.9 mm
- 1/2" - 12"

Range of Wall Thickness

- in accordance with
- EN 10253 part 4 (Series 1 - 6)
 - ASME B36.19 (SCH 10S - XXS)

material grades EN and DIN

- 1.4306
- 1.4307
- 1.4541
- 1.4550
- 1.4539
- 1.4571
- 1.4404
- 1.4439
- 1.4462
- 1.4828
- 1.4841
- 1.4878

ASME

- WP304/304L
- WP316/316L
- WP321/321H
- WP347/347H
- WP304H
- UNS S31803
- UNS S32750
- WP310S

Machining Center

Sunjin P&S machines butt welding fittings and produces custom fittings (made of round bar) according to the applicable standards (EN, DIN, ASME), and of course also according to any special requirements – quickly and to an exceptionally high standard of quality.

Elbows and Fittings According to Customer Requirements

We can machine elbows and fittings at short notice in our machining centre directly in accordance with customer requirements:

- Pre-processing and taper boring of elbows and fittings with an outer diameter of up to 610.0 mm
- Cutting of elbows in any required degree value
- End machining in accordance with standard
- Machining according to drawing or customer specifications

Special Fittings Made of Solid Materials

The required product is not available from stock? Products can be quickly fabricated - even for unusual requests - thanks to our extensive buffer stock of steel bars, blanks, and seamless pipes.

Our fabrication and pre-processing activities currently encompass the following areas:

- Reducers (concentric and eccentric)
- Tees
- Caps
- Crosses
- Lateral tees
- Customised turned parts made as per customer drawings up to 480 mm diameter
- Threaded fittings



WELDING NECK FLANGE



BLIND FLANGE



SOCKET WELDING FLANGE



LAP JOINT FLANGE



THREAD (SCREWED) FLANGE



SLIP-ON FLANGE

Oil, Gas & Chemicals



- Upstream (Onshore & Offshore)
- Midstream
- Downstream

Power



- Conventional
- Nuclear
- Renewable

Mining



- Extractions
- Transformation

Infrastructure



- Transportation
- Large Industrial

Flanges

**INTELLIGENT, FLEXIBLE, RUGGED
WITH TOTAL INSPECTION PRODUCTIVITY**

MATERIALS

Carbon Steels

ASTM

- A5105(N)
- A181Gr
- A266Gr
- A350Gr

JIS

- SFGGr

High Yield Carbon Steels

ASTM A694Gr

- F42
- F45
- F52
- F55
- F60
- F65

Stainless Steels

ASTM A182Gr

- F304(L,H)
- F316(L,H)
- F347(H)
- F317(L)
- F44

Duplex & Super Duplex Steels

ASTM A182Gr

- F51
- F53

Low Alloy Steels

ASTM A182Gr

- F1
- F5(A)
- F6
- F9
- F11
- F12
- F22

Nickel Alloy

B564

- UNS 6625
- UNS 8825

The Best in Metals, Worldwide.

Sunjin P&S carefully selects superior quality metals products from leading manufacturers. We also enjoy supply relationships with leading worldwide sources. Regardless of the manufacturer, Sunjin P&S manages supplier qualification, order placement and delivery schedules. In addition, we coordinate with manufacturers to ensure on-time delivery.

Fasteners

PROVEN EXPERIENCE.
CERTIFIED QUALITY.
DEPENDABLE SERVICE.

STUD BOLT & NUT

B7, B7M, L7, L7M
B8, B8M, B8M CL, 2
A453-660
INCONEL 625, 718
UNS S32750 / S32760
MONEL K-400 / K-500



STUD BOLT

B16, B4B
INCONEL 718, INCONEL X-750
A453-660, A193-B7, A193-B8M



HEAVY HEX BOLT(HEXAGON BOLT)/HEX NUT

B7, B7M, B16 ,B5, L7, L7M, L43, 20CrMoVTIB4-10
A36, A307, 4.6, SS400, S45C, A325 ,A490
B8 CL1&2, B8M CL1&2, B8T, B8C, B6, SS317(L)
A453-660, INCONEL 625, 718, INCONEL 925, C276
UNS S32760 / S32750
Grade 2 / 5 / 7
C65100, C63000, C61400



HEXAGON HEAD BOLT & NUT

B7, B16, A325, A440
INCONEL 718
A453-660



U-BOLT/HEX NUT/ISOLATION PAD

B7,B7M,B16,B5,L7,L7M,L43,20CrMoVTIB4-10
A36,A307,4.6,SS400,S45C,A325,A490
B8 CL1&2, B8M CL1&2,B8T,B8C,B6,SS317(L)
A453-660, INCONEL 625, 718, Incoloy 925,C276
UNS S32760 / S32750
Grade 2 / 5 / 7
C65100, C63000, C61400



www.sunjinpns.com

	DESCRIPTION	MATERIAL	DIMENSION	RANGE	
				Inch	Metric
B O L T	STUD BOLT	A193,A320,A437,A449,A453,ISO 898-1	A193,A307,A540,A564	1/4"~6"	M6~M160
	HEX BOLT	A193,A320,A437,A449,A453,ISO 898-1	ASME B18.2.1 / ANSI B18.2.3.5M	1/4"~6"	M5~M160
	HEAVY HEX BOLT	A193,A320,A437,A449,A453,ISO 898-1	ASME B18.2.1 / ANSI B18.2.3.6M	3/8"~3"	M10~M48
	SQUARE HEAD BOLT	A193,A307,S45C,S20C,SS400	ASME B18.2.1	1/4"~1-1/2"	
	FITTED BOLT	JIS G 4053(SCM435,SCM440,S45C)	CUSTOMER SPECIFICATION		M24~M60
	HEX SOCKET BOLT	A193,A320,A437,A449,A453,ISO 898-1	ASME B18.3/ANSI B18.3.1M	NO.0~4"	M6~M48
	U-BOLT	A193,A325A,SS400	JIS F3022	3/8"~32"	M12~M30
	ANCHOR BOLT	A36,A307,A540,SF440,S45C,20C,SS400	JIS B1178	1/2"~5"	M12~M125
	T-HEAD BOLT	A36,SF440,S45C,S20C,SS400	DIN7992	1/2"~4"	
	EYE BOLT	A489,S45C,S20C,SS400	ANSI B18.15	1/4"~2-1/2"	M6~M120
	FLANGE BOLT	A193,A320,A437,A449,A453,ISO 898-1	ASME B18.2.1/IFI536	1/4"~3/4"	M6~M30
	TENSION BOLT	JIS G 4053(SCM435,SCM440)	CUSTOMER SPECIFICATION		M10~M30
	HOLD'G DOWN BOLT	JIS G4053(SCM435,SCM440)	CUSTOMER SPECIFICATION		M24~M30
	END CHOCK BOLT	JIS G4053(SCM435,SCM440)	CUSTOMER SPECIFICATION		M40~M80
	COUPLING BOLT	JIS G4053(SCM435,SCM440)	CUSTOMER SPECIFICATION		M50~M180
S T U D	PISTON CROWN BOLT	JIS G4053(SCM435,SCM440,SNCM439)	CUSTOMER SPECIFICATION		M12~M30
	CYLINDER COVER STUD	JIS G4053(SCM435,SCM440,SNCM439)	CUSTOMER SPECIFICATION		M48~M120
	MAIN BEARING STUD	JIS G4053(SCM435,SCM440,SNCM439)	CUSTOMER SPECIFICATION		M48~M120
	CONNECTING ROD STUD	JIS G4053(SCM435,SCM440,SNCM439)	CUSTOMER SPECIFICATION		M48~M120
	FUEL VALVE STUD	JIS G4053(SCM435,SCM440,SNCM439)	CUSTOMER SPECIFICATION		M20~M48
	AXIAL VIBR DAMPER STUD	JIS G4053(SCM435,SCM440,SNCM439)	CUSTOMER SPECIFICATION		M20~M48
	STARTING AIR VALVE STUD	JIS G4053(SCM435,SCM440,SNCM439)	CUSTOMER SPECIFICATION		M20~M48
	REDUCED SHANK STUD	JIS G4053(SCM435,SCM440,SNCM439)	CUSTOMER SPECIFICATION		M20~M48
	PISTON ROD STUD	JIS G4053(SCM435,SCM440,SNCM439)	CUSTOMER SPECIFICATION		M12~M30
	TIE-ROD	JIS G4053(SCM435,SCM440,SNCM439)	CUSTOMER SPECIFICATION		M24~M80
N U T	HEX NUT	A194,A453,A563,ISO 898-2	ASME B18.2.2/ANSI B18.2.4.1M	1/4"~4"	M10~M160
	HEAVY HEX NUT	A194,A453,A563,ISO 898-2	ASME B18.2.2/ANSI B18.2.4.6M	1/4"~6"	M10~M160
	HEX JAM NUT	A194,A453,A563,ISO 898-2	ASME B18.2.2/ANSI B18.2.4.1M	1/4"~4"	M10~M36
	FITTED NUT	JIS G4053(SCM435,SCM440)	CUSTOMER SPECIFICATION		M20~M120
	COUPLING NUT	JIS G4053(SCM435,SCM440)	CUSTOMER SPECIFICATION		M50~M180
	ROUND NUT	JIS G4053(SCM435,SCM440)	CUSTOMER SPECIFICATION		M30~M120
Etc	HYDRAULIC NUT	JIS G4053(SCM435,SCM440)	CUSTOMER SPECIFICATION		M30~M120
	PLUG	A105,A182,A350,S45C	ANI B16.11	1/8"~4"	
	WASHER	A510,A580ASWRH,F436,S45C	ASME B18.21.1/IFI532/JIS B1251	1/2"~3"	

Design of competitive solutions
Strong product expertise
Ability to interface with all customers around all the globes
Structured QA/QC process to assess & control

We offer a full range of specialized services and solutions to optimize time, quality and costs.
 Dedicated sourcing and technical experts defining & implementing the most effective sourcing strategy.
 Complete set of value adding services to ensure on- quality and on-time delivery.
 We are serving most major International EPC contractors and Shipyards.

Electrical Material & Equipment

ONE STOP SHOP FOR LV/MV ELECTRICAL MATERIAL



Cable & Wires

- MV Power Cables
- LV Power Cables
- Control & Instrumentation Cab
- Bus Ducts
- LAN Cables
- EHT Power Cables
- Shipwiring



Cable Trays

- Cable trays
- GRP cable trays
- Ladder rack
- Cable basket tray
- Cable strut systems



Conduits & Fittings

- Electrical metallic tubing
- Rigid steel conduit
- PVC coated conduit
- PVC conduit
- Ex-Proof conduit fittings



Cabling MGT

- Glands
- Ties
- Markers
- Connectors & Terminations
- Grounding
- Cable Cleats



Lighting & Accessories

- Fixtures
- Poles
- Mounting accessories
- Lighting control
- Ex-Proof fixtures
- Energy efficiency lighting systems



Motors & Drives

- Alternators / Generators
- Electric Motors
- Speed reducers
- Electric starters and speed changers
- High performance motors
- VFD



Primary Power Protection & Distribution

- MV transformers
- LV transformers
- MV switchgears
- LV switchgears
- Substations motor control centers
- E-houses



Power Management

- MCBs – Panel board
- RCCBs – Panel board
- Industrial control devices
- Ex-Proof junction boxes
- Ex-Proof panel boards



Low Voltage Power Distribution

- UPS Systems
- Charger & rectifier
- Inverters
- Capacity banks
- Neutral grounding resistors

Certifications and Conformity Marks



WATERJET EQUIPMENT

Your High Pressure and
Centrifugal Pump Partners

Sunjin P&S Co., Ltd. is the largest supplier of high and ultra high pressure water pumps, hydroblasting equipment and centrifugal pumps, in the Middle East and South East Asia.

Headquartered in Ulsan, Korea and supported by a agent in Singapore, covering all of Asia.

Since our early days in 2000, Sunjin P&S Co. Ltd. has established a reputation for quality and excellence that few can rival. Being pump-proficient is the foundation of our business.

Driven by a commitment to source new and innovative products, our insight and knowledge is demonstrated through our responsibility to provide our clients with the very best tools for their job and innovate products which offer commercial and competitive benefits, keeping YOU, one step ahead.

Sunjin P&S Co. Ltd. 's Ulsan-based head office also houses the central assembly facility, with highly skilled technicians ready to package and build Waterblast Units and pumpsets with tools, equipment and accessories as required by the client.





High Pressure Water Blast Tools

**INTELLIGENT, FLEXIBLE, RUGGED
WITH TOTAL INSPECTION PRODUCTIVITY**

Sunjin P&S Co., Ltd. is handling of StoneAge Tools Inc. are global leaders in the design and manufacture of high pressure waterblast tools and automated equipment.

Their products have been in use by contractors and operators for three decades, and have been refined and enhanced year on year.

With a product range spanning pipe cleaning nozzles through to automated heat exchanger cleaning equipment StoneAge tools have become an intrinsic part of any waterjetting company's arsenal.

StoneAge are based in Durango, Colorado USA, they work out of a state of the art engineering and manufacturing facility with cutting edge in-house testing terminals allowing the dedicated engineering team to continue to push the boundaries of design.

By partnering with industrial cleaning contractors, StoneAge engineers have been able to gain a unique insight that guides the design of automated systems that increase safety and advance productivity for a wide variety of waterblasting applications.

Vertidrive Customized robots

Sunjin P&S Co., Ltd. is handling of Vertidrive

The M3 and M4 Robots are designed to carry out open hydroblasting and offer significant advantages over the traditional methods to remove marine growth, industrial coatings and corrosion.

Featuring a magnetic drive assembly and light-weight construction, VertiDrive's range of robotic equipment has been designed to adhere to vertical, horizontal, and overhead steel surfaces.

The Robot is carried by a specially designed trolley, with a safety winch system that hosts a fall arrester for easy positioning. The robot (54kg) can then be lifted and mounted to any steel surface.

Once positioned correctly, the robot can be controlled remotely by the operator, and surface preparation can begin. The reciprocating boom comes with a electric driven rotor head providing a 20cm wide cleaning pattern and a 140cm stroke.





The Others
Pipe, Flat Bar, Round Bar, Section

Aquajet Hydrodemolition Robots

**INTELLIGENT, FLEXIBLE, RUGGED
WITH TOTAL INSPECTION PRODUCTIVITY**

Sunjin P&S Co., Ltd. is handling of Aquajet Hydrodemolition Equipment for removing deteriorated and damaged concrete. Aquajet Systems is the leading force in Hydrodemolition technology across the globe. Their Aqua Cutters are the most advanced on the market with an extensive range of features to boot.

The entire range of equipment from Aquajet have been designed specifically for the purpose intended, and have repeatedly exceeded our customers high expectations on efficiency, function, productivity and reliability.

Hydrodemolition is the Sustainable way to protect and preserve concrete constructions. The key to Hydrodemolition is to pressurise and widen the microcracks in the weakened concrete using high-pressure water penetration. Material is removed as the build-up of pressure exceeds the tensile strength of the concrete.

Unlike conventional methods such as jackhammers, Hydrodemolition is impact-free, avoiding vibrations that loosen rebar and cause micro fractures, protecting the integrity of the substrate.

Hydrodemolition is applicable to all concrete surfaces in need of refurbishing, repair or cleaning, and can be used underwater.

LCC analysis shows that the repair life expectancy of 21 to 35 years compared to mechanical chiselling of 7-12 years.



mp of its land.
repower,

Centrifugal Pumps

Sunjin P&S’s engineer and package high performance centrifugal pumps for use in Oil &Gas, Industrial, Pipeline Pre-Commissioning and Flushing, Agriculture, Mining, Municipal, and general applications

“Sunjin P&S’s reputation for quality and efficiency, and the company’s success in the Hydrojet industry, makes them ideal partners for increasing our reach and ensuring our pumps are being packaged to their best advantage.”

- Paul Skippins, Commercial Director, Pioneer

1.5 to 30inch flange sizes.
Flows upto 10,000 m3/hr
Heads upto 210meters.
Impellers available for clear liquid or solid handing applications
Maximum solids handling 5.9inches.

Mechanically driven diaphragm type vacuum pump with SO CFM capability evacuate the suction line quickly and reliably.

Mechanical seal lube oil reservoir allows pump to run dry indefinitely

Pioneer’s Posivalve stainless steel priming valve is specifically designed to eliminate product carryover.



Heavy Duty Design with various material options available:-
•Ductile Iron •CD4MCu Duplex stainless steel •316 Stainless steel - Reduced maintenance costs

AVAILABLE IN SKID MOUNTED/ LIFTING FRAME/ CONTAINER/ WHEEL-MOUNTED OPTIONS.

Automatically Dry Self-Primings. No priming water required. High efficiency impeller means lower fuel costs. Applications include dewatering, Pipeline flooding, Chemical flushing, Sewage over pumping, Sea water lift product transfer

Using a selection of the market leading brands, we custom engineer and package split-case, end suction and multi-stage pumps, vacuum assisted automatic selfpriming and automatic wet self-priming pumps.

We understand the heavy-duty demands of our clients applications, and in this region, pumps will invariably operate in hostile environments. For this reason, we source performance pumps and custom package using robust ductile iron with over sized bearings and shafts giving you unparalleled reliability.

All of our pumpsets are fully engineered to your specifications, pumps can be skid or trailer mounted, or can come complete with a lifting frame or canopy enclosure.

As required, our Technical Engineers can ensure each unit’s compliance with hazardous zones and ATEX regulations. With unrivalled regional teams of service technicians and support staff, Asia Waterjet provide an after sales service that you can have confidence in.



Pipeline Inspection Systems

**INTELLIGENT, FLEXIBLE, RUGGED
WITH TOTAL INSPECTION PRODUCTIVITY**

MiniCam specialise in the manufacture and distribution of Pipeline Inspection Systems. Their products have been designed based on 20+ years of experience, indepth knowledge and customer feedback.

The full range of products from MiniCam meet and exceed most pipeline inspection requirements and with advanced reporting software, detailed footage can be recorded and all findings can be documented.

The products are suitable for use in multiple environments including waterproofing units up to pressure ratings up to 1Bar / 14 Psi as well as hazardous areas with ATEX Zone 2 certification options available. When combined with a wide variety of accessories available the minicam range becomes a very versatile inspection option, allowing you the customer utilize your investment over a broad spectrum of applications.





Tank cleaning Mini-Robots



No Man Entry Radio-Controlled Tank Cleaning Mini-Robots

In a continued effort to minimize the entry of man in Confined Spaces during cleaning activities, GerottoFederico Srl has developed a new generation of remote radio-controlled mini-robots to move, for instance, in underground tanks, to disrupt the compact materials with the use of a front mill, to extract the sediments by suction.

The robot, connected to the Suction Excavator through the suction pipe D.250, is totally remote-controlled from outside by a single operator so that no man should enter confined spaces during the emptying of tanks and reservoirs with risk of the presence of pollutants.

Gerotto's mini robots can be used in combination with drains and other types of industrial vacuum cleaners as well as Suction Excavator.





Streamline Pumps

Discflo's pumps have been solving problems in the Oil & Gas + Petrochemical, offshore and onshore service, subsea operations, tank transfer, environmental clean-up operations, crude oil processing and pumping oil/water emulsions industry for over 36 years. The powerful combination of superior abrasion resistance, gas entrained pumping ability, and non-emulsifying laminar flow make the disc pump the ideal choice for some of the toughest applications.



Discflo's pumps have been solving problems in the Oil & Gas + Petrochemical, offshore and onshore service, subsea operations, tank transfer, environmental clean-up operations, crude oil processing and pumping oil/water emulsions industry for over 36 years. The powerful combination of superior abrasion resistance, gas entrained pumping ability, and non-emulsifying laminar flow make the disc pump the ideal choice for some of the toughest applications.

The Disc pump uses a new and patented technology that isn't available in any other pump. The technology of the Disc pump harnesses the natural power of the boundary layer and viscous drag.

Through viscous drag, the fluid is pulled through the pump without impingement. The boundary layer attracts and drags successive layers of fluid molecules into layered flows of parallel streams. This is the simple principle of viscous drag and in the Disc pump it is a powerful dynamic force that "pulls" the fluid through the pump in a smooth laminar, non-turbulent flow.



Power Generation Engines (G Drive/ GPac)

Model	Type		Displacement (Liter)	Bore x Stroke (mm)	Output (ISO 3046/ 8528)				Dimension (LxWxD) (mm)	Dry Weight
	No. of Cyl.	Aspiration			kWm(ps), 50Hz		kWm(ps), 60Hz			
					Prime	Stand-by	Prime	Stand-by		
DP066TA	L6	TC	58	102×118	77(104)	85(115)	108(147)	120(163)	1144×705×836	450
DP066LA	L6	TI	58	111×139	104(141)	115(156)	122(165)	135(183)	1144×705×836	475
DP086TA	L6	TC	81	111×139	137(185)	152(207)	168(228)	187(254)	1242×746×1113	730
P086TI	L6	TI	81	111×139	177(240)	199(270)	205(279)	223(303)	1242×923×1035	730
DP086LA	L6	TI	81	111×139	201(273)	224(305)	228(310)	253(344)	1242×1122×1113	730
P126TI	L6	TI	111	123×155	241(328)	272(370)	278(378)	298(405)	1384×1103×1195	910
P126TI-II	L6	TI	111	123×155	265(360)	294(400)	307(418)	342(465)	1384×1103×1195	915
P158FE	V8	TI	146	128×142	402(546)	441(600)	441(600)	492(669)	1492×1389×1240	997
P158LE-1	V8	TI	146	128×142	327(444)	362(492)	366(498)	402(546)	1389×1389×1216	950
P158LE	V8	TI	146	128×142	363(494)	414(563)	402(547)	458(623)	1389×1389×1216	950
DP158LC	V8	TI	146	128×142	408(555)	449(610)	466(634)	513(697)	1274×1138×1207	1155
DP158LD	V8	TI	146	128×142	464(630)	510(693)	505(687)	555(755)	1274×1138×1207	1155
P180FE	V10	TI	183	128×142	452(615)	496(675)	515(700)	563(770)	1539×1389×1230	1188
DP180LA	V10	TI	183	128×142	502(683)	552(750)	559(760)	615(836)	1592×1389×1223	1230
DP180LB	V10	TI	183	128×142	556(756)	612(832)	601(817)	661(899)	1592×1389×1223	1230
P222FE	V12	TI	219	128×142	589(774)	612(832)	659(896)	711(957)	1719×1389×1335	1650
DP222LA	V12	TI	219	128×142	60Hz Only		670(911)	737(1002)	1738×1389×1238	1420
DP222LB	V12	TI	219	128×142	604(821)	664(903)	711(957)	782(1063)	1738×1389×1238	1420
DP222LC	V12	TI	219	128×142	657(894)	723(983)	753(1023)	828(1126)	1738×1389×1238	1420

Engines For All Industrial Fields

INTELLIGENT, FLEXIBLE, RUGGED
WITH TOTAL INSPECTION PRODUCTIVITY

Introduction of Engine Business Group

Doosan Infracore Engine Business Group started building Korea’s first diesel engines in 1958 and has expanded its business ever since. Today, the Engine Business Group supplies global customers with diesel and compressed natural gas (CNG) engines for buses and trucks, industrial equipment, power generation and marine.

The research and development team has been devoted to developing eco-friendly engines to meet stringent emission standards, and developed Euro 5 compliant diesel engines and Euro 6 CNG engines for commercial vehicles and as well as the CNG engines for power generation. The Business Group completed development of sophisticated compact diesel engines that satisfy tougher U.S. Tier 4 Final and EU Stage IIIB & IV standards, these new models started production in 2012. The Engine Business Group operates facilities for engine assembly, materials production, and parts machining. The product portfolio includes wide range of power output diesel and CNG engines to satisfy various demands of customers all over the world. Doosan Infracore will keep striving to satisfy alleviating standards of customers and provide a value to lives of people and our environments.





Valves, Fittings & Packaging System

FITTINGS

Hy-Lok Fittings have been designed with great care to meet the specifications required for a wide range of applications in various industries and satisfied production standards. Hy-Lok Fittings have been used in Most of the industrial fields and supplied to well-known end users in the world on the basis of the best quality and reliable and wide technology.



VALVES

Hy-Lok Instrument Valves, Manifolds and Manual Ball Valves have been highly recognized by customers through the safety, reliability and corrosiveness to meet the severe installation condition such as offshore and power plant.



PACKAGING SYSTEM

Hy-Lok has designed and manufactured customized Package Solution such as Air Manifolds, Air Pipe Module for Train Brake System and Instrument Panel operated in power plant. Hy-Lok has prepared in any circumstances with concerted efforts through the accumulated technology & know-how for 40 years.





mp of its land.
repower,

Centrifugal Pumps

Sunjin P&S’s engineer and package high performance centrifugal pumps for use in Oil &Gas, Industrial, Pipeline Pre-Commissioning and Flushing, Agriculture, Mining, Municipal, and general applications

“Sunjin P&S’s reputation for quality and efficiency, and the company’s success in the Hydrojet industry, makes them ideal partners for increasing our reach and ensuring our pumps are being packaged to their best advantage.”

- Paul Skippins, Commercial Director, Pioneer

1.5 to 30inch flange sizes.
Flows upto 10,000 m3/hr
Heads upto 210meters.
Impellers available for clear liquid or solid handing applications
Maximum solids handling 5.9inches.

Mechanically driven diaphragm type va cum pump with SO CFM capability ev athe suction line quickly and reliably.

Mechanical seal lube oil reservoir allows pump to run dry indefinitely

Pioneer’s Posivalve stainless steel priming valve is specif ically designed to eliminate product carryover.



Heavy Duty Design with various material options available:-
•Ductile Iron •CD4MCu Duplex stainless steel •316 Stainless steel - Reduced maintenance costs

AVAILABLE INSKID MOUNTED/ LIFTING FRAME/ CONTAINER/ WHEEL-MOUNTED OPTIONS.

Automatically Dry Self-Primings. No priming water required. High efficiency impeller means lower fuel costs. Applications include dewatering, Pipeline flooding, Chemical flushing, Sewage over pumping, Sea water lift product transfer

Using a selection of the market leading brands, we custom engineer and package split-case, end suction and multi-stage pumps, vacuum assisted automatic selfpriming and automatic wet self-priming pumps.

We understand the heavy-duty demands of our clients applications, and in this region, pumps will invariably operate in hostile environments. For this reason, we source performance pumps and custom package using robust ductile iron with over sized bearings and shafts giving you unparalleled reliability.

All of our pumpsets are fully engineered to your specifications, pumps can be skid or trailer mounted, or can come complete with a lifting frame or canopy enclosure.

As required, our Technical Engineers can ensure each unit’s compliance with hazardous zones and ATEX r egulations. With unrivalled regional teams of service technicians and support staff, Asia Waterjet provide an after sales service that you can have confidence in.

Contact US

Ulsan, Korea

Head Office:

3F. Ulsan Free Trade Zone Office, 162,
Cheoyongsaneop 3-gil, Cheongnyang-myeon, Ulju-gun
Ulsan, 44988, Republic of Korea

Phone: +82 70 7701 8788

Fax: +82 52 260 1500

Email: hkleee@sunjinpns.com

Person In Charge

Mr. Nicky Kwon

Email: nicky@sunjinpns.com

Cell. Phone: +82 10 2998 1476