

Automobile surface protective
coating production technology **No.1**

MFAM

New experience of 'Mfam' coating !

Be surprised at the effect and impressed with the durability!

See the difference in technology !

Mfam Co., Ltd.

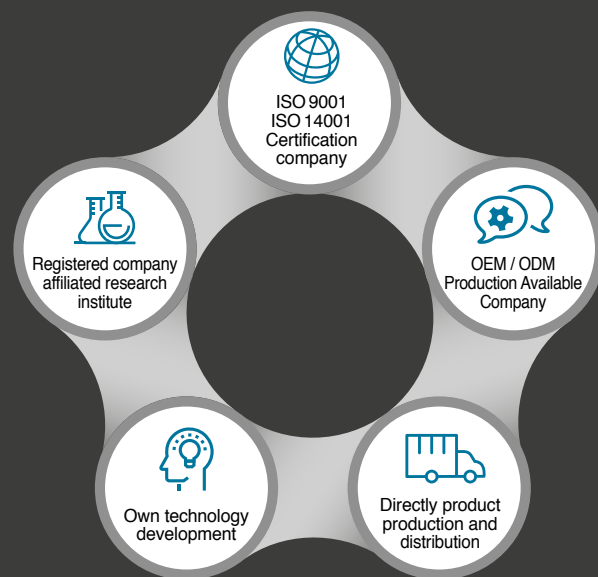
114-1, Namsan 2-gil, Jiksan-eup, Seobuk-gu, Cheonan-si,
Chungcheongnam-do, 31034, Republic of Korea
Tel. +82-41-588-1400 Fax. +82-41-417-1900

E-mail. office@mfam.kr
website. mfam.kr



Automobile surface protective coating production technology No.1

Introduce various products related to automobiles, including coating, with outstanding technology.



Mfam coating are own company, from direct development, production, distribution and service. Customer satisfaction is our top priority through new technology and thorough customer trust.

Mfam HISTORY

2019

- 02 Acquisition of R & D Dept certificate
- 03 Acquisition of disabled company certificate (No. 0027-2019-00440)
- 04 Acquisition of small business confirmation document (No. 0010-2019-93196)
- 04 KOSME Entered Youth Start-up School (9th phase)
- 05 KOMPASS Vietnam a trade delegation
- 05 Established company affiliated research institute (No. 2019112877)
- 07 KITA Become a member Companies
- 07 Trade business unique number Acquisition
- 07 No.10-200753 Patent registration of apply clear coating agent
- 08 No.40-2019-0126423 'MCOAT' Trademark apply
- 08 Global Business Sourcing Fair 2019 Participate
- 09 No. EB19-07-0079 Certificate Acquisition of 'Blizzard' safety confirmation
- No. EB19-07-0080 Certificate Acquisition of 'Glass Barrier' safety confirmation
- 10 AUTO SALON AUTOWEEK 2019 Participate
- 10 Korea Automotive Industry Exhibition 2019 Participate
- 10 Acquisition ISO9001 (No.19-Q-3374-00)
- Acquisition ISO14001 (No.19-E-1695-00)
- 10 Established overseas branch of KOTRA in Ho Chi Minh, Vietnam
- 11 Jakarta International Premium Products Fair 2019 Participate
- 11 Korea Invention Patent Exhibition 2019 Participate
- 11 Invention Patent Exhibition 2019
- Award for the President of the Korean Society for the Advancement of Inventions

2018

- 04 MFAM Co., Ltd. established
- 11 Established MFAM Co., Ltd. Cheonan factory
- 12 No. 18-43-A-140 Acquisition of risk assessment certificate of excellent workplace

2017

- 07 'MFAM' No. 40-1265317 Trademark registration
- 09 F-A05B-K007001-A170 Passed 'BLACK BARRIER' safety test

ABOUT US

We operate more than 10 'Mfam' car exterior management franchisees and we will reward you with the best service that responds quickly to your needs under the belief that customers are our top priority.



'Mfam' have a wide range of products related to automobiles, including coating.

Based on continuous research and efforts, we will practice customer satisfaction with excellent products and honest prices that are differentiated from any other brands.

NEW BRAND

Mcoat Premium NEW Brand **Mcoat**
Master + Coat = Mcoat

Business

Mcoat is developing various products for sustainable growth.

Coating

By protecting the painted surface, you can reduce the pollution of the car and easily manage the vehicle.

Shampoo/Cleaner

Soft foam can clean the outside surface safely.

Package product

Constitute multiple products into sets.

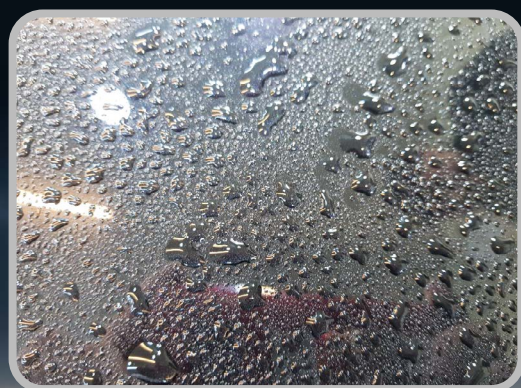


“Feel the **difference in Technology!**”

✓ Thickness 16um at 2coat **Black Barrier!**



✓ See the difference in the beading ! **Glass Barrier+ Blizzard+!**



New concept polish

Apply Clear coating

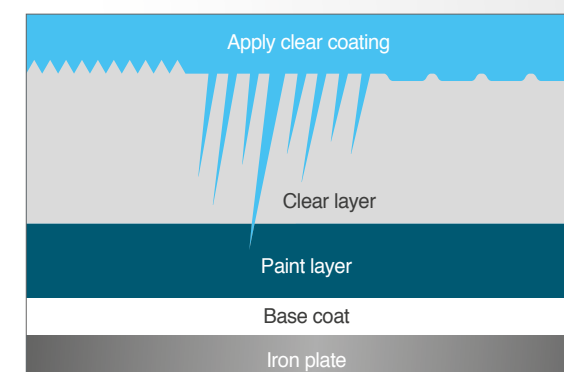
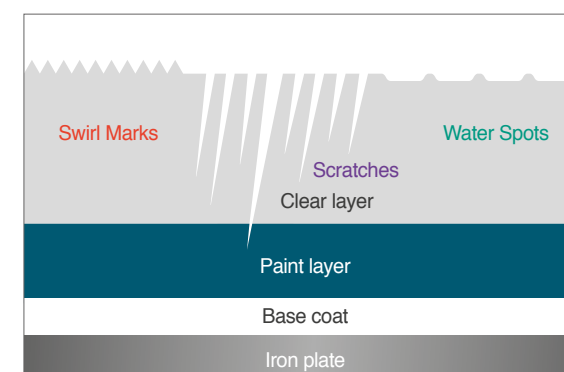


Apply clear coating MASKOTE

500ml

New concept coating which becomes coating when we apply without flattening work with gloss machine or sandpaper and it has higher hardness(8H) and gloss than other products. It is a natural hardening type (including 2~3 hours of pretreatment time), which has the advantage of preventing physical damage to the painted surface layer due to its strong durability and scratch resistance.

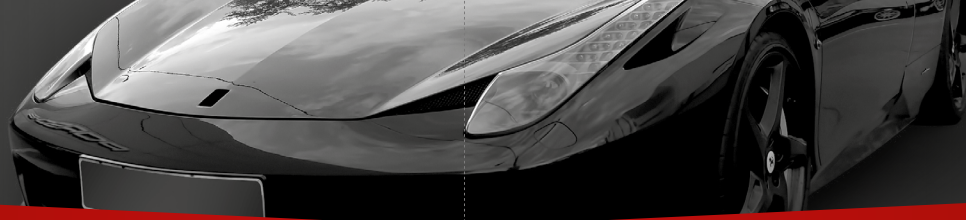
► Mcoat Apply clear coating MASKOTE



Swirl Marks Swirl Marks, a whirlwind or cobweb-shaped micro scratch caused by automatic car wash, improper use of towels during handwashing, and sand dust generated while driving, is restored by MASKOTE.

Scratches Various scratches, including artificial scratches, are also restored by the MASKOTE.

Water Spots Water spots, stains that occur when you haven't washed your car for a long time in the rain or haven't wiped them, are also restored by MASKOTE.



BLACK BARRIER

Car ceramic coating for Professionals

50ml

This is the most powerful and effective coating (forms a coating layer of 16um when coated twice) with specialized durability, water-repellency, pollution-repellency, chemical-resistance, and heat-resistance.

- ✓ Wet type work
- ✓ Products that can shorten working time
- ✓ 3~5 medium cars can be work
- ✓ Maintenance period 2 years or more



BARRIER PLUS

Car ceramic coating management (Soft Top management)

100ml

This product is used as a management after the coating of car ceramic coating.

- ✓ Excellent water repellency
- ✓ Can be used as a soft top management
- ✓ Improve the efficacy give increasing the life of the car ceramic coating (Use once 2~3 months)



RED BARRIER

Car ceramic coating for Owner's

50ml

Medium-grade of coating with BLACK BARRIER beading and BLUE BARRIER durability.

- ✓ Easy work method
- ✓ Products that can shorten working time
- ✓ 3~5 medium cars can be work
- ✓ Maintenance period 2 years or more



GLASS BARRIER +

Glass water-repellent coatings available to consumers

50ml

It is a water-repellent coating for glass that has excellent water repellency and improves its thickness over other products.

- ✓ Easy work method
- ✓ Excellent maintenance period(6~12 months)
- ✓ 10~15 medium cars front glass can be work



BLUE BARRIER

Advanced car ceramic coating

50ml

BLUE BARRIER is superior in durability and hardness than conventional products. Also less than other products price.

- ✓ It is dry type work from like other car ceramic coating
- ✓ 3~5 medium cars can be work
- ✓ Maintenance period 1 years or more



BLIZZARD +

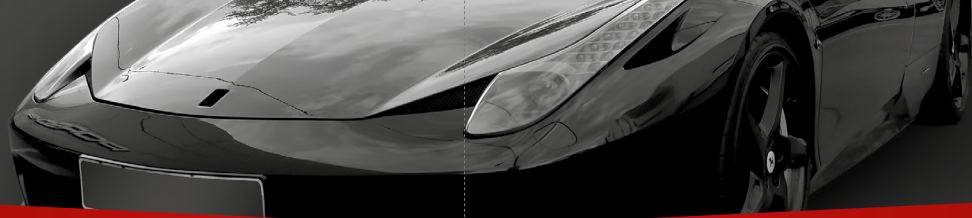
Water-repellent coating for owners (Anyone can use)

100ml

It has higher SiO2 content than other companies products and has excellent water repellent effect.

- ✓ Can be used even when wet
- ✓ Excellent maintenance period(6months)
- ✓ Has can be used regardless of car surface and glass
- ✓ 5 medium cars can be work





WHEEL BARRIER



50ml

It protects the coated surface after work and has excellent gloss and durability. It is also a coating that is effective in harsh heat and dusty environments.

- ✓ Higher hardness (8H)
- ✓ Excellent maintenance period (6~12months)
- ✓ More than 600°C of heat resistance

WHEEL CLEANER



500ml

Cleaner that can be used safely in brake systems.

- ✓ Effectively removes brake dust, dirt and grime

LEATHER BARRIER



50ml

It is a coating that can be applied to all kinds of leather including natural leather. In addition, the leather does not dry or crack.

- ✓ Prevent discoloration of liquids and contaminants
- ✓ Penetrates deep into the surface to form a membrane
- ✓ Prevents water penetration and dust by forming antifouling particles

MERINO WOOL MITT



100% real premium wool

230g

The merino wool mitt is made of natural wool and soft to minimize the damage to the painted car surface.

- ✓ Easy to use in the form of a glove
- ✓ Smooth, so you can wash your car gently

CAR SHAMPOO



1ℓ / 4ℓ

It is a highly concentrated product with good cleaning and lubricating power.

- ✓ Two capacities and can be used by both consumers and vendors

※ Dilute to 50:1 ratio when using car mitt
※ Dilute to 20:1 when using car foam gun



Solar Panels coating



Solar Panels coating Solar Guardian

50ml

Coating for solar panels that can be easily work for maximum electric power. It is a coating that can prevent the surface caused by various pollutants and stain such as caused to its excellent durability and water repency.

▶ Mcoat Solar Panels coating Solar Guardian



▶ TEST

<Before applying 'Solar Guardian'>



September October November

<Before applying 'Solar Guardian'>

PWO PEAK	240w	269w	222w	219w	224w	217w	238w	233w	254w	228w	229w	225w	214w	219w	225w	238w	219w	215w	92w	251w
PWO DAY	808wh	838wh	766wh	962wh	1191wh	1222wh	1008wh	1010wh	797wh	879wh	727wh	1060wh	1031wh	809wh	802wh	955wh	243wh	757wh	303wh	513wh

<After applying 'Solar Guardian'>



September October November

<After applying 'Solar Guardian'>

PWO PEAK	242w	297w	224w	223w	226w	219w	240w	235w	255w	230w	232w	227w	216w	220w	226w	240w	222w	217w	139w	254w
PWO DAY	829wh	875wh	804wh	1024wh	1220wh	1223wh	1270wh	1272wh	899wh	952wh	770wh	1152wh	1103wh	911wh	852wh	1088wh	258wh	888wh	318wh	647wh

Mfam Co., Ltd.

Certificate & License

