

# WOODANG

## PRODUCTS GUIDE



Since 1983

WOODANG TECHNICAL INDUSTRY CO., LTD.

## FUSIBLE LINK TYPE SPRINKLER HEAD

It is designed and manufactured as a high-strength integrated product, and it prevents foreign substances from outside to ensure stable performance in the event of fire. It is a product that improved the issues of conventional sprinkler heads with outstanding shock resistance and air tightness.

When the fusible link thermal element melts (ruptures), the deflector is exposed and the fire extinguisher is sprayed on to the designated area according to the deflector shape.

Patent 10-1047028-0000/Patent 10-1040075-0000

## GLASS BULB TYPE SPRINKLER HEAD

In the event of fire, the thermal element sealed with liquid such as alcohol and glycerin, in a glass ball ruptures (melts), causing the pressurized fire extinguisher to be sprayed by the deflector on to the designated area.

Pendent Type  
Quick Response Type

## FUSIBLE LINK TYPE (FLUSH)

\* Close Type (Fusible Link), #15

/Korea Fire Institute inspection goods

### Product Feature

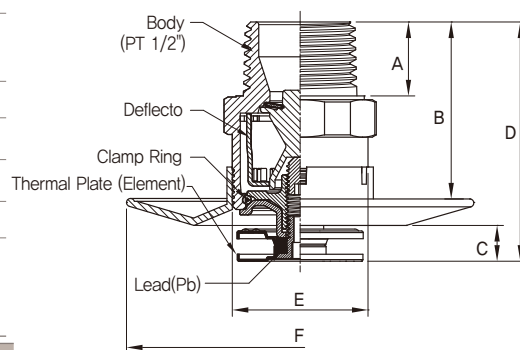
- A quick response type sprinkler head with fast response time index (RTI).
- High-end sprinkler head ideal for hotels, officetel and apartments, with superior aesthetics and high-quality gloss finish, and with low risk of damaging due to minimum protrusions after ceiling finish installation.

▶ QR : Quick Response Type (Effective Spray Radius r2,6)



ASFPQ-072-10A  
ASFPQ-105-10A

Model Number	ASFPQ-072-10A	ASFPQ-105-10A			
Operating Temperature	72℃	105℃			
Caution Temperature	39℃	67℃			
Response Type	Quick Response (QR)				
Spray Direction	Pendent				
Thread Size	PT ½ " (15A)				
Flow Volume	80 ℓ /min				
Operating Temperature (Frame Color)	72℃ (Silver)	105℃ (White)			
A	B	C	D	E	F
15.2	34	6.6	45.7	Ø25.4	Ø65





### Pendent Type Standard Response Type

## FUSIBLE LINK TYPE (FLUSH)

\* Close Type (Fusible Link), #15

/Korea Fire Institute inspection goods

### Product Feature

- Standard response sprinkler is a sprinkler head uses special alloy finished fused metal, which the fuse metal melts at operating temperature and drops down. This causes the internal deflector to automatically protrude and spray water.

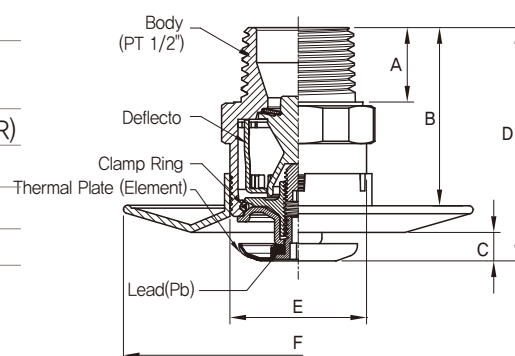
► SR : Standard Response Type (Effective Spray Radius r2.6)



ASFPS-072-10A  
ASFPS-105-10A

Model Number	ASFPS-072-10A	ASFPS-105-10A
Operating Temperature	72°C	105°C
<b>Caution Temperature</b>	<b>39°C</b>	<b>67°C</b>
Response Type	Standard Response Type (QR)	
Spray Direction	Pendent	
Thread Size	PT 1/2" (15A)	
Flow Volume	80 l/min	
Operating Temperature (Frame Color)	72°C (Silver)	105°C (White)

A	B	C	D	E	F
15.2	34	5.3	44.3	Ø25.4	Ø65



### Pendent Type

## FUSIBLE LINK TYPE (RESIDENTIAL)

\* Close Type (Fusible Link), #15

/Korea Fire Institute inspection goods

### Product Feature

- It has minimum protrusions after ceiling finish installation which lead to low risk of damage, and its superior aesthetics and high-quality gloss finish make it ideal for public spaces (simple sprinkler equipment).

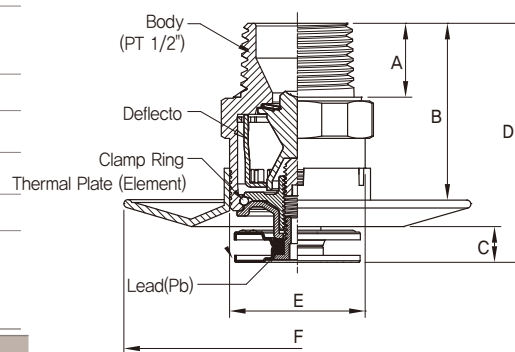
► QR : Quick Response Type



ASKFQ-072-03A  
ASKFQ-105-03A

Model Number	ASKFQ-072-03A	ASKFQ-105-03A
Operating Temperature	72°C	105°C
<b>Caution Temperature</b>	<b>39°C</b>	<b>67°C</b>
Response Type	Quick Response Type (QR)	
Spray Direction	Pendent	
Thread Size	PT 1/2" (15A)	
Flow Volume	50 l/min	
Operating Temperature (Frame Color)	72°C (Silver)	105°C (White)

A	B	C	D	E	F
15.2	34	6.6	45.7	Ø25.4	Ø65



FUSIBLE LINK TYPE SPRINKLER HEAD

Side Wall Type  
Quick Response Type

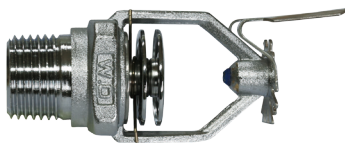
# FUSIBLE LINK TYPE (HORIZONTAL SIDEWALL)

\* Close Type (Fusible Link), #15

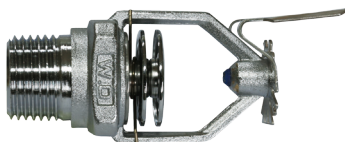
/Korea Fire Institute inspection goods

## Product Feature

- Fusible-link thermal element has low risk of leaking due to external shock, and it features a latch spring that helps thermal element detachment in the event of fire.

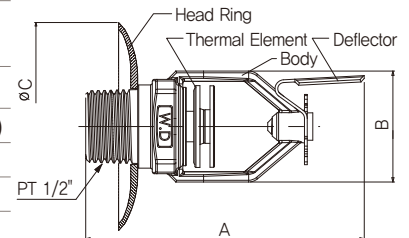


ASFWQ-072-01A



ASFWQ-105-01A

Model Number	ASFWQ-072-01A	ASFWQ-105-01A
Operating Temperature	72℃	105℃
<b>Caution Temperature</b>	<b>39℃</b>	<b>67℃</b>
Response Type	Quick Response Type (QR)	
Spray Direction	Side Wall Type(Horizontal Sidewall)	
Thread Size	PT 1/2" (15A)	
Flow Volume	80 l /min	
Operating Temperature (Frame Color)	72℃ (Silver)	105℃ (White)



A	B	C
80.3	32	Ø80

Pendent Type  
Standard/Quick Response Type

# FUSIBLE LINK TYPE (FLUSH/DRY PENDENT)

\* Closed Type (Fusible Link), #25, r2.6

/Korea Fire Institute inspection goods

## Product Feature

- Installed at locations with risk of freeze and burst, and product length can be adjusted according to the site.
- When the fusible link thermal element melts (ruptures), it causes the deflector to be exposed and fire extinguishing water is sprayed according to the deflector shape on to the designated area.

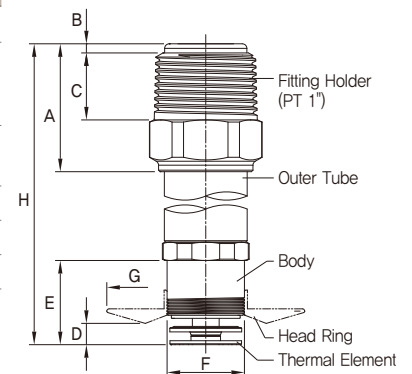


ADFPQ-072-01A  
ADFPQ-105-01A



ADFPS-072-01A  
ADFPS-105-01A

Model Number	ADFPS-072-01A	ADFPS-105-01A	ADFPQ-072-01A	ADFPQ-105-01A
Operating Temperature	72℃	105℃	72℃	105℃
<b>Caution Temperature</b>	<b>39℃</b>	<b>67℃</b>	<b>39℃</b>	<b>67℃</b>
Response Type	Standard Response Type (SR)		Quick Response Type (QR)	
Spray Direction	Pendent			
Thread Size	PT 1 " (25A)			
Flow Volume	80 ℓ /min			
Operating Temperature (Frame Color)	72℃ (Silver)	105℃ (White)	72℃ (Silver)	105℃ (White)



A	B	C	D	E	F	G	H
42	3	22	7	28	Ø25.4	65	120~1,500

※ Length (H): 120~1,500/Residential Type Length (H): 200~500



Side Wall (Horizontal) Type  
Quick Response Type

# FUSIBLE LINK TYPE (DRY SIDEWALL)

\* Closed Type (Fusible Link), #25

/Korea Fire Institute inspection goods

## Product Feature

- Installed at locations with risk of freeze and burst, and product length can be adjusted according to the site.
- When the fusible link thermal element melts (ruptures), fire extinguishing water is sprayed according to the deflector shape on to the designated area.

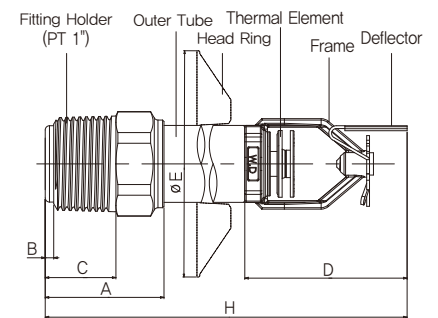


ADHWQ-072-01A



ADHWQ-105-01A

Model Number	ADHWQ-072-01A	ADHWQ-105-01A
Operating Temperature	72°C	105°C
<b>Caution Temperature</b>	<b>39°C</b>	<b>67°C</b>
Response Type	Quick Response Type (QR)	
Spray Direction	Side Wall Type(Horizontal Sidewall)	
Thread Size	PT 1 " (25A)	
Flow Volume	80 l /min	
Operating Temperature (Frame Color)	72°C (Silver)	105°C (White)



A	B	C	D	E	H
42	3	22	57	Ø80	120~1,500

※ Length (H): 120~1,500

Upright Type  
Standard Response Type

# GLASS BULB TYPE (UPRIGHT)

\* Closed Type (Glass Bulb), #25, r2,3

/Korea Fire Institute inspection goods

## Product Feature

- It is a product installed on structures without ceilings or underground parking lots

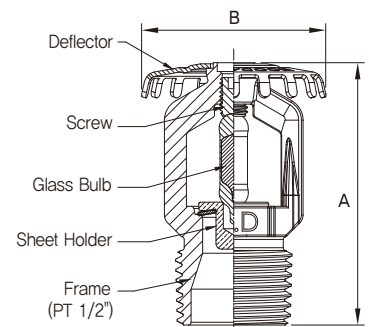


ASBUS-068-03A



ASBUS-093-03A

Model Number	ASBUS-068-03A	ASBUS-093-03A
Operating Temperature	68°C	93°C
<b>Caution Temperature</b>	<b>39°C</b>	<b>56°C</b>
Response Type	Standard Response Type (SR)	
Spray Direction	Upright Type	
Thread Size	PT ½ " (15A)	
Flow Volume	80 l /min	
Operating Temperature (Frame Color)	68°C (Red)	93°C (Green)



	A	B
ASBUS-068-03A	47.5	Ø33.5
ASBUS-093-03A		

# GLASS BULB TYPE SPRINKLER HEAD

Pendent Type  
Standard/Quick Response Type

## GLASS BULB TYPE (PENDENT)

\* Closed Type (Glass Bulb), #15, r2,3

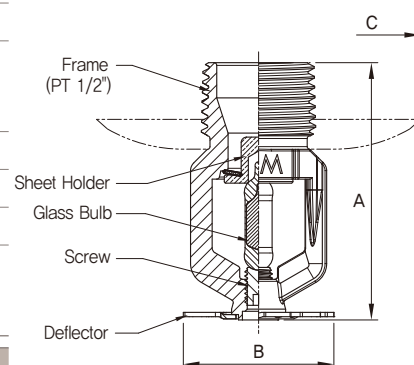
/Korea Fire Institute inspection goods

### Product Feature

- It is a product with simple glass ball structure containing alcohol and glycerin, and it has excellent reliability.



Model Number	ASBPS-068-03A ASBPQ-068-03A	ASBPS-093-03A ASBPQ-093-03A
Operating Temperature	68℃	93℃
Caution Temperature	39℃	56℃
Response Type	Standard Response Type (SR) / Quick Response Type (QR)	
Spray Direction	Pendent	
Thread Size	PT 1/2" (15A)	
Flow Volume	80 l /min	
Operating Temperature (Glass Bulb Color)	68℃ (Red)	93℃ (Green)
A	47.5	C
B	Ø28	Ø60



Pendent Type  
Standard Response Type

## GLASS BULB TYPE (DRY/PENDENT)

\* Closed Type (Glass Bulb), #15, r2,3

/Korea Fire Institute inspection goods

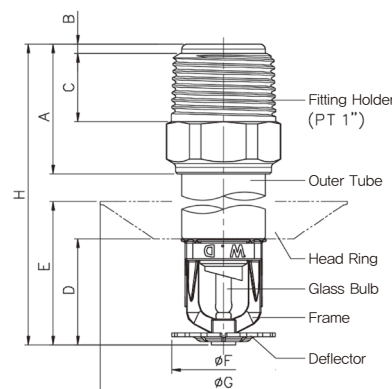
### Product Feature

- Installed at locations with risk of freeze and burst, and product length can be adjusted according to the site.
- In the event of fire, the thermal element sealed with liquid such as alcohol and glycerin, in a glass ball ruptures causing the pressurized fire extinguisher to be sprayed by the deflector on to the designated area.



Model Number			ADBPS-068-01A			ADBPS-093-01A	
Operating Temperature			68℃			93℃	
Caution Temperature			39℃			56℃	
Response Type			Standard Response Type (SR)				
Spray Direction			Pendent Type				
Thread Size			PT 1 " (25A)				
Flow Volume			80 ℓ /min				
Operating Temperature (Glass Bulb Color)			68℃ (Red)			93℃ (Red)	
A	B	C	D	E	F	G	H
42	3	22	34	46.5	Ø33.5	Ø80	120~1,500

※ Length (H) : 120~1,500





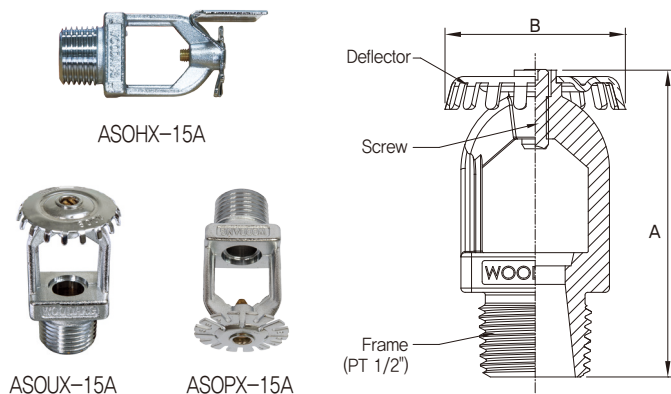
## Open Type Sprinkler Head (Pendent/Upright/Side Wall)

/Korea Fire Institute inspection goods

Model Number	ASOUX-15A	ASOPX-15A	ASOHX-15A
Spray Direction	Upright Type	Pendent Type	Side Wall Type
Thread Size	PT 1/2" (15A)		
Flow Volume	80 l/min		

### Product Feature

- Open type sprinkler head is a sprinkler head with a fully open water outlet and no thermal element.

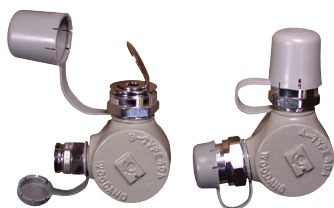


	A	B
ASOUX-15A	57.5	Ø34
ASOPX-15A	57.5	Ø33
ASOHX-15A	71.5	Ø30/43

## SPRAY NOZZLE (Tunnel Extinguishing)

### Product Feature

- It is able to quickly extinguish fire in tunnels environments, and it is capable of preventing the spread of fire.
- It is a tunnel fire extinguishing spray nozzle system that combines dual spray nozzles along the water supply pipes installed along the tunnel's inner wall, and it is installed on an even spacing to allow water to be sprayed from each side of the fire.
- In order to minimize the damage inflicted on people and vehicles inside the tunnel, the system forms a barrier of water around the fire to block the spread of fire and smoke created.



Model Number	ANSNO-0A1	ANSNO-0A2	ANSNO-0B1	ANSNO-0B2
Classification of Combinations	Tunnel A Type		Tunnel B Type	
	A1	A2	B1	B2
Nozzle Shape	Spiral Flow Type	Spiral Flow Type	Spiral Flow Type	Deflector Type
Height (mm)	64	96	45	96
Width (mm)	47	47	36	47
Material	NOZZLE (Brass) / BOX (GCD)			
Standard Waterproof Pressure	0.35MPa			
Spray Angle (°)	170	90	120	90
Flow Volume LPM(0.35MPa)	110	140	90	160
Effective Range (m)	5	10	6	11.5
Thread Size	PT 1" (25A)	PT 1" (25A)	PT 3/4" (20A)	PT 1" (25A)

## SPRAY NOZZLE (Underground Pipe Utility Conduit Combustion Prevention, Extinguishment by Smothering)

### Product Feature

- It is a combustion prevention water spray head for fire extinguishing systems designed to effectively suppress fire in underground pipe utility conduits.
- The performance and design of the system depends on the surface area.



Model Number	ANSNO-0A3
Classification of Combinations	Underground Pipe Utility Conduit
	A3
Nozzle Shape	Spiral Flow Type
Height (mm)	34
Width (mm)	24
Material	NOZZLE (Brass)
Standard Waterproof Pressure	0.35MPa
Spray Angle (°)	130
Flow Volume LPM(0.1MPa)	15
Effective Range (m)	4
Thread Size	PT 3/4" (20A)

SPECIAL HEADS

## SPRAY NOZZLE (Extinguishment by Smothering, Cooling)

### Product Feature

- This product is a custom order made product where the connection specification, pressure, spray angle and flow volume based on consumer demand.



Model Number	ANSNO-008~020
Material	NOZZLE (Brass)
Spray Angle ( ° )	Order Made
Connection Standard LPM(0.1MPa)	Order Made
Thread Size	PT ¼ " (8A) ~ PT ¾ " (20A) Order Made

## Watering Head (Waterring Head)

### Product Feature

- It is a head suited for open head equipment or high-temperature, high-pressure spraying which utilizes linear or spiral extinguishing water collision or spread in the event of fire.
- The application of stainless steel frame and deflector guarantees outstanding high-temperature, high-pressure spraying and heat resistance strength.



Model Number	AVWHO-015	AVWHO-020
Spray Direction	Pendent	
Connecting Bolt	PT ½ " (15A)	PT ¾ " (20A)
Water Outlet Diameter	Ø 11.5	
Design Flow Volume	180 LPM (0.5MPa)	
Surface Treatment	Ni-Cr	
Body	Stainless Steel	
Height, Width	51.8 × 48	55 × 49.2

## Drencher Head (Drencher Head)

### Product Feature

- Drencher head creates a water curtain to isolate and protect important cultural assets, gas or combustible tanks of structures against flame or radiant heat, and it is also employed as fire blockers in areas where firewalls cannot be installed to prevent the spread of fire, smoke and toxic gases (also used as gas spray head or powder spray head).



Model Number	ANDHA-015	ANDHV-020
Spray Direction	Horizontal Type	Vertical Type
Connecting Bolt	PT ½ " (15A)	
Design Flow Volume	80 LPM (0.1MPa)	
Material	Brass	
Surface Treatment	Ni-Cr	
Spray Angle	5 ° × 170 °	5 ° × 120 °
Height, Width	36, HEX 26	37, HEX 26

## US Viking Type Product (UL, FM Approved (Viking/Sprinkler Head))



/Korea Fire Institute inspection goods

Model Number	LARGE ORIFICE	EXTRALARGE ORIFICE	HIGHCHALLENGE LAGEDROP	QUICK RESPONSE TYPE
	ASVUS-068	ASVUS-141	ASVUS-093	ASVPQ-074
Operating Temperature	68℃	141℃	93℃	74℃
Caution Temperature	39℃	106℃	64℃	39℃
Frame Color	Red	Blue	Green	Fusible Link
Response Time Index	Standard Response Type			Quick Response Type
Spray Direction	Upright			Pendent
Connecting Bolt	PT ¾ " (20A)			
Water Outlet Diameter	Ø 13.7	Ø 15.9	Ø 16.5	Ø 17.8
Design Flow Volume (0.1MPa)	117 LPM	158 LPM	166 LPM	195 LPM
Height, Width	Frame - Brass casting			
Glass bulb	G5			
Deflector	SSU, UL, FM		HIGHCHALL, UL, FM	ESFR, UL, FM



## ALARM VALVE

An alarm valve is a wet, automatic fire extinguishing valve supplied up to the sprinkler head tube end of the secondary pipe.

It does not require an automatic fire detectors and when one or more sprinkler head activates, the clapper opens, activates the fire alarm, and discharges extinguishing water on the fire area. As it is a wet type system where the primary and secondary pipes are pressurized, it requires heating or thermal keeping treatment in preparation of winter.

## RELIEF VALVE FOR ALARM VALVE

Once the internal pressure of the alarm valve secondary pipeline exceeds the pressure set by the user (0.9K–1.2K), the overpressure discharge device system automatically drains the water from the secondary pipe through a hose connected to the drain valve, maintaining the pressure of the secondary pipeline.

## PRE-ACTION VALVE

The pre-action valve open type is a dry automatic fire extinguishing valve that can be used in a variety of closed or open sprinklers and foam extinguishers, and it does not require heat insulation work on the secondary pipe to prevent freeze and burst. When the electric ball valve attached to the body activates due to fire, the pre-action valve, which had been maintaining its setting, opens and extinguishing water is released to the fire point to extinguish the fire through open heads.

## DELUGE VALVE

Deluge valve maintains wet on primary pipes and dry on secondary pipes, and it is used as a fire extinguishing valve for open sprinklers, water sprayers and foam extinguishers activated by an automatic or manual actuator.

There are explosion proof and non-explosion proof type models, and once the fire is extinguished, it can automatically restore its setting with actuator operation on the control panel.

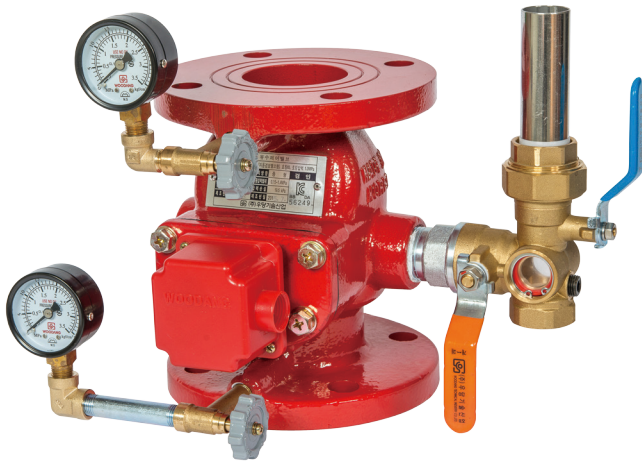
# ALARM VALVE

## FLANGE TYPE ALARM VALVE AVAC1

/Korea Fire Institute inspection goods

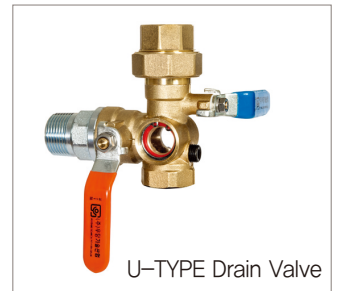
### Product Feature

- It detects the movement of running water and sends a signal allowing accurate detection.
- Test valve, sight glass can be added to the drain valve as options significantly reducing the installation cost.
- Drain valve L/R type can be selected according to the pipe structure of the site.
- Application of Korean high-strength casted steel (GCD 450) ensures greater durability.
- Weight reduction allows easy handling.

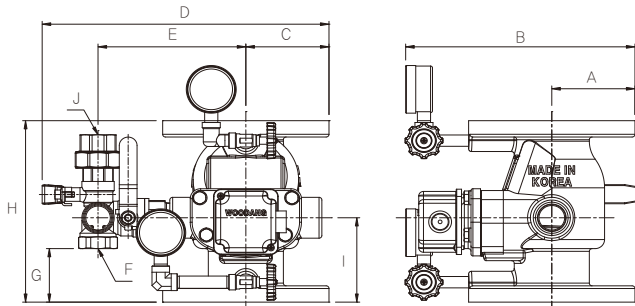


Model Number	AVAC1 065~150
Title Standard	1MPa – 65A ~ 150A
Working Pressure Range	0.15 ~ 1.4MPa
Operation Method	Clapper Swing
Connection Standard	KS B 1511 1MPa FF Flange
Applicable Liquid	Water
Material	Body (GCD450 Ductile Casting)
	Disc/Sheet (SS400/NBR)

### Drain Valve Option



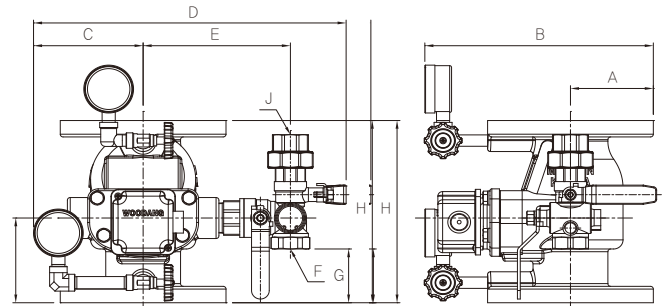
#### LEFT TYPE



Model Number	A	B	C	D	E	F(DRAIN)	G	H	I	Pressure Loss	Drain Valve
AVAC1065	87.5	241	87.5	300	124	25A	53	200	93	19.5 kPa	C TYPE
AVAC1080	92.5	251	92.5	310	129	25A	61	200	101	10.3 kPa	
AVAC1100	105	276	105	335	141	25A	61	230	101	17.7 kPa	
AVAC1150	140	346	140	405	176	25A	75	280	115	16.7 kPa	

Model Number	A	B	C	D	E	F(DRAIN)	G	H	I	J	Pressure Loss	Drain Valve
AVAC1065	87.5	241	87.5	302	155	25A	59	200	93	25A	19.5 kPa	U, L TYPE
AVAC1080	92.5	251	92.5	312	161	25A	67	220	101	25A	10.3 kPa	
AVAC1100	105	276	105	337	173	25A	67	230	101	25A	17.7 kPa	
AVAC1150	140	346	140	407	208	25A	81	280	115	25A	16.7 kPa	

#### RIGHT TYPE



Model Number	A	B	C	D	E	F(DRAIN)	G	H	I	Pressure Loss	Drain Valve
AVAC1065	87.5	241	116	328	124	25A	53	200	93	19.5 kPa	C TYPE
AVAC1080	92.5	251	116	333	129	25A	61	200	101	10.3 kPa	
AVAC1100	105	276	116	346	141	25A	61	230	101	17.7 kPa	
AVAC1150	140	346	140	405	176	25A	75	280	115	16.7 kPa	

Model Number	A	B	C	D	E	F(DRAIN)	G	H	I	J	Pressure Loss	Drain Valve
AVAC1065	87.5	241	116	330	155	25A	59	200	93	25A	19.5 kPa	U, L TYPE
AVAC1080	92.5	251	116	335	161	25A	67	220	101	25A	10.3 kPa	
AVAC1100	105	276	116	348	173	25A	67	230	101	25A	17.7 kPa	
AVAC1150	140	346	140	407	208	25A	81	280	115	25A	16.7 kPa	



SEMI-GROOVED  
TYPE

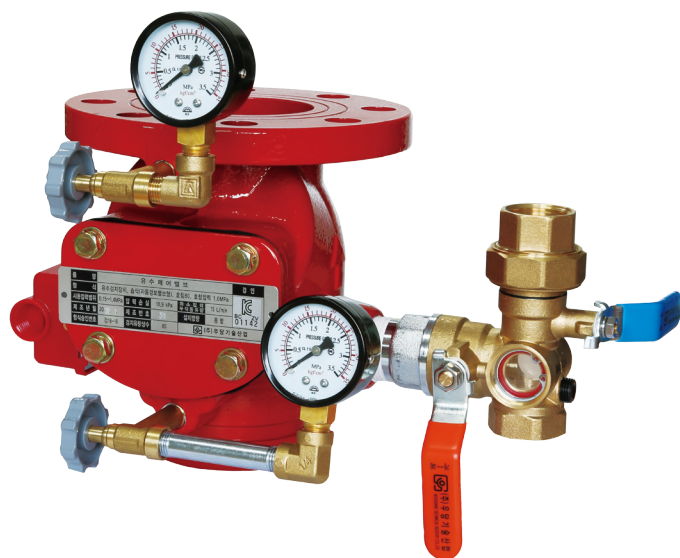
## ALARM VALVE AVAE1

/Korea Fire Institute inspection goods

## Product Feature

- It detects the movement of running water and sends a signal allowing accurate detection.
- Test valve, sight glass can be added to the drain valve as options significantly reducing the installation cost.
- Drain valve L/R type can be selected according to the pipe structure of the site.
- Application of Korean high-strength casted steel (GCD 450) ensures greater durability.
- Weight reduction allows easy handling.

Model Number	AVAE1 065~100
Title Standard	1MPa – 65A ~ 100A
Working Pressure Range	0.15 ~ 1.4MPa
Operation Method	Clapper Swing
Connection Standard	KS B 1511 1MPa FF Flange + KS B 1507 Grooved Joint
Applicable Liquid	Water
Material	Body (GCD450 Ductile Casting)
	Disc/Sheet (SS400/NBR)



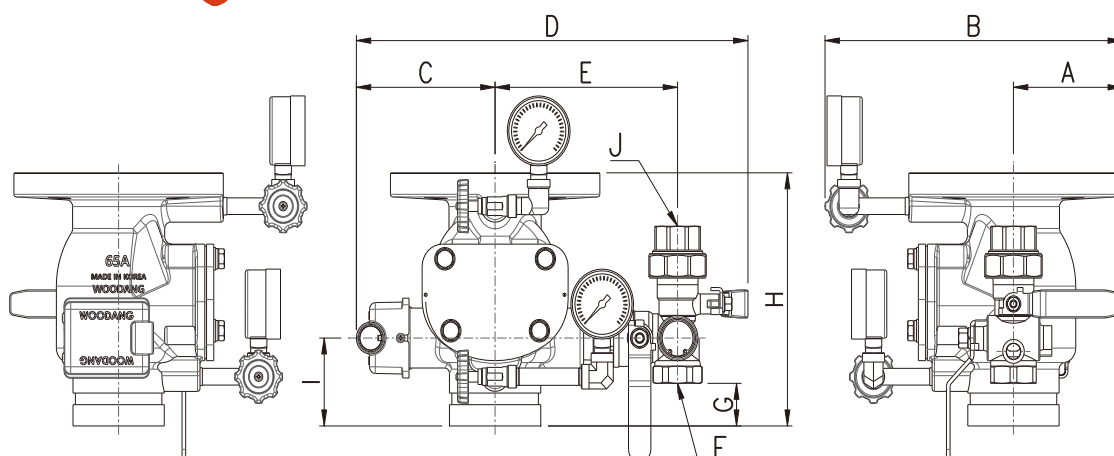
## Drain Valve Option



C-TYPE Drain Valve



U-TYPE Drain Valve



Model Number	A	B	C	D	E	F(DRAIN)	G	H	I	Pressure Loss	Drain Valve
AVAE10065	88	245	116	340	131	25A	26	190	66	19.7 kPa	C TYPE
AVAE10080	93	255	124	355	138	25A	26	190	66	18.9 kPa	
AVAE10100	105	280	130	368	145	25A	32	210	72	16.1 kPa	

Model Number	A	B	C	D	E	F(DRAIN)	G	H	I	J	Pressure Loss	Drain Valve
AVAE10065	91	248	116	327	153	25A	32	190	66	25A	19.7 kPa	U TYPE
AVAE10080	93	255	124	342	160	25A	32	190	66	25A	18.9 kPa	
AVAE10100	105	280	130	355	167	25A	38	210	72	25A	16.1 kPa	

# ALARM VALVE

## FLANGE TYPE

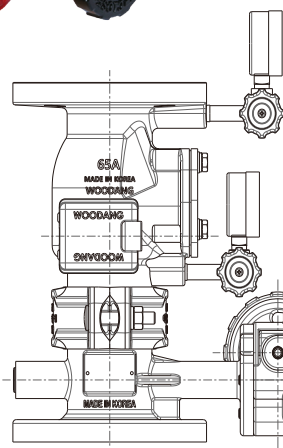
## BUTTERFLY ALARM VALVE

Automatic Alarm Valve + Open/Close Display Type Valve (Gear Type AVAI1)

### Product Feature

- It is able to reduce the material cost and installation cost such as pipes for short tubes and flanges.
- It features a tamper switch that creates electric signals according to the opening and closing of valves to allow convenient maintenance.
- It has minimum pressure loss with flow passage taking up 60% of the total surface area.
- As the valve is operated by gears, it is able to prevent disc dislocation due to water hammering within the pipe.
- Application of Korean high-strength casted steel (GCD 450) ensures greater durability.
- Weight reduction allows easy handling.

Model Number	AVAI1 065~100		
Title Standard	1MPa – 65A ~ 100A		
Working Pressure Range	0.15 ~ 1.4MPa		
Operation Method	Clapper Swing		
Connection Standard	KS B 1511 1MPa FF Flange		
Applicable Liquid	Water		
Material	Classification	Alarm Valve	Butterfly Valve
	Body	Body (GCD450 Ductile Cast)	
	Disc	SS400	GCD450
	Sheet	NBR	



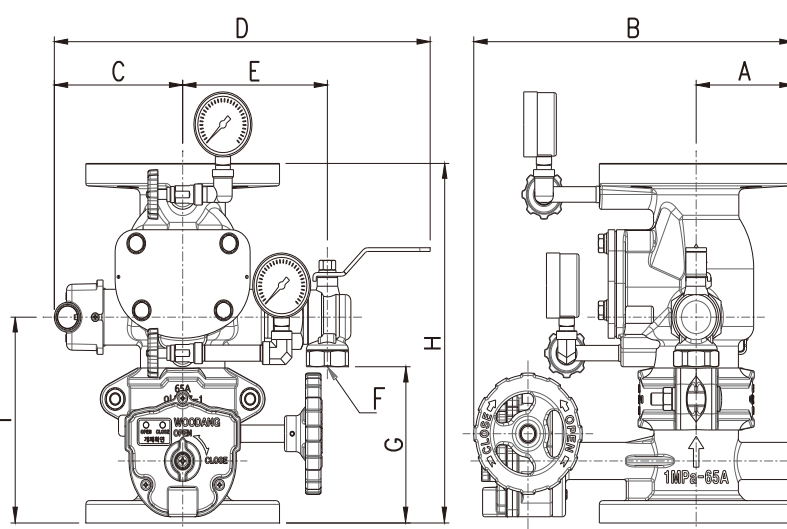
### Drain Valve Option



C-TYPE Drain Valve



U-TYPE Drain Valve



Model Number	A	B	C	D	E	F(DRAIN)	G	H	I	Pressure Loss	Drain Valve
AVAI10065	88	288	116	340	131	25A	126	290	166	19.7 kPa	C TYPE
AVAI10080	93	301	124	355	138	25A	122	290	166	18.9 kPa	
AVAI10100	105	323	130	368	145	25A	147	325	187	16.1 kPa	

Model Number	A	B	C	D	E	F(DRAIN)	G	H	I	J	Pressure Loss	Drain Valve
AVAI10065	88	288	116	327	153	25A	132	290	166	25A	19.7 kPa	U TYPE
AVAI10080	93	301	124	342	160	25A	132	290	166	25A	18.9 kPa	
AVAI10100	105	323	130	355	167	25A	153	325	187	25A	16.1 kPa	

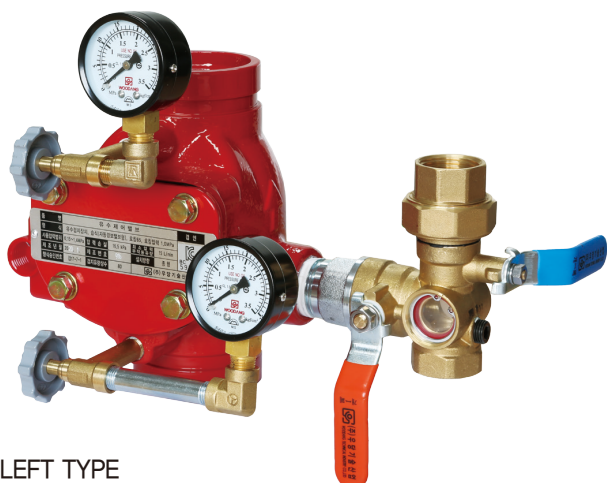
## GROOVED TYPE

## ALARM VALVE AVAG1

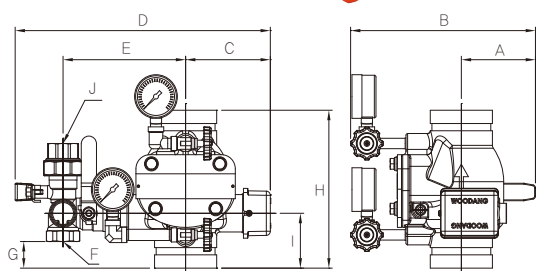
/Korea Fire Institute inspection goods

## Product Feature

- It utilizes grooved joints for connecting which allows convenient installation, and it also has great vibration resistance and convenient maintenance capabilities.
- It detects the movement of running water and sends a signal allowing accurate detection.
- Test valve, sight glass can be added to the drain valve as options significantly reducing the installation cost.
- Drain valve L/R type can be selected according to the pipe structure of the site.
- Application of Korean high-strength casted steel (GCD 450) ensures greater durability.
- Weight reduction allows easy handling.



## LEFT TYPE

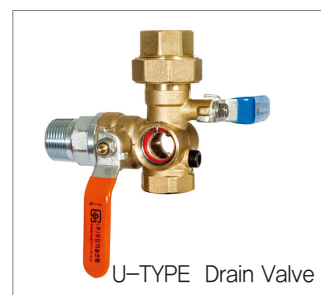


Model Number	A	B	C	D	E	F(DRAIN)	G	H	I	Pressure Loss	Drain Valve
AVAG1065	52	189	116	330	121	25A	26	190	66	16.5 kPa	C TYPE
AVAG1080	59.5	204	124	345	128	25A	26	190	66	13.6 kPa	
AVAG1100	68	220	130	358	135	25A	32	210	72	14.5 kPa	
AVAG1125	82	254	143	394	158	25A	41	240	80.5	12.7 kPa	
AVAG1150	83	255	143	394	158	25A	68	260	80.5	16.4 kPa	

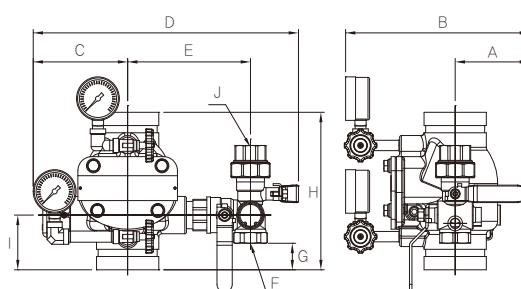
Model Number	A	B	C	D	E	F(DRAIN)	G	H	I	Pressure Loss	Drain Valve
AVAG1065	91	228	116	327	153	25A	32	190	66	16.5 kPa	U, L TYPE
AVAG1080	91	236	124	342	160	25A	32	190	66	13.6 kPa	
AVAG1100	91	243	130	355	167	25A	38	210	72	14.5 kPa	
AVAG1125	91	263	143	381	180	25A	47	240	80.5	12.7 kPa	
AVAG1150	91	263	143	381	180	25A	68	260	80.5	16.4 kPa	

Model Number	AVAG1 065~150	
Title Standard	1.0MPa (65A ~ 150A)	1.6MPa (65A ~ 150A)
Working Pressure Range	0.15 ~ 1.4MPa	0.15 ~ 2.1MPa
Operation Method	Clapper Swing	
Connection Standard	KS B 1507 Grooved Joint	
Applicable Liquid	Water	
Material	Body (GCD450 Ductile Cast)	
	Ductile Cast (GCD 450/NBR)	

## Drain Valve Option



## RIGHT TYPE



Model Number	A	B	C	D	E	F(DRAIN)	G	H	I	Pressure Loss	Drain Valve
AVAG1065	52	189	116	330	121	25A	26	190	66	16.5 kPa	C TYPE
AVAG1080	59.5	204	124	345	128	25A	26	190	66	13.6 kPa	
AVAG1100	68	220	130	358	135	25A	32	210	72	14.5 kPa	
AVAG1125	82	254	143	394	158	25A	41	240	80.5	12.7 kPa	
AVAG1150	83	255	143	394	158	25A	68	260	80.5	16.4 kPa	

Model Number	A	B	C	D	E	F(DRAIN)	G	H	I	Pressure Loss	Drain Valve
AVAG1065	91	228	116	327	153	25A	32	190	66	16.5 kPa	U, L TYPE
AVAG1080	91	236	124	342	160	25A	32	190	66	13.6 kPa	
AVAG1100	91	243	130	355	167	25A	38	210	72	14.5 kPa	
AVAG1125	91	263	143	381	180	25A	47	240	80.5	12.7 kPa	
AVAG1150	91	263	143	381	180	25A	68	260	80.5	16.4 kPa	

ALARM VALVE

GROOVED TYPE

BUTTERFLY ALARM VALVE

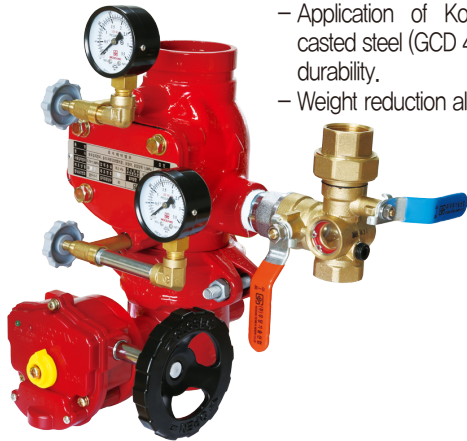
Automatic Alarm Valve + Open/Close Display Type Valve (Gear Type AVAJ1)

/Korea Fire Institute inspection goods

Product Feature

- It is able to reduce the material cost and installation cost such as pipes for short tubes and flanges.
- It is easy to install compared to flange types, and it has high economic feasibility.
- It is capable of effectively absorbing pipe changes due to stress generated within the pipe such as shrinking, expanding, vibrating, external force and bending.
- It features a tamper switch that creates electric signals according to the opening and closing of valves to allow convenient maintenance.
- It has minimum pressure loss with flow passage taking up 60% of the total surface area.
- As the valve is operated by gears, it is able to prevent disc dislocation due to water hammering within the pipe.

- Application of Korean high-strength casted steel (GCD 450) ensures greater durability.
- Weight reduction allows easy handling.

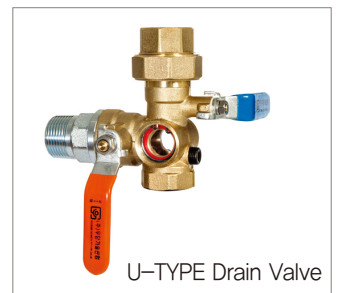


Model Number	AVAJ1 065~150	
Title Standard	1.0MPa (65A ~ 150A)	1.6MPa (65A ~ 150A)
Working Pressure Range	0.15 ~ 1.4MPa	0.15 ~ 2.1MPa
Operation Method	Clapper Swing	
Connection Standard	KS B 1507 Grooved Joint	
Applicable Liquid	Water	
Material	Classification	Alarm Valve Butterfly Valve
	Body	Body (GCD450 Ductile Cast)
	Disc	GCD 450
	Sheet	NBR

Drain Valve Option

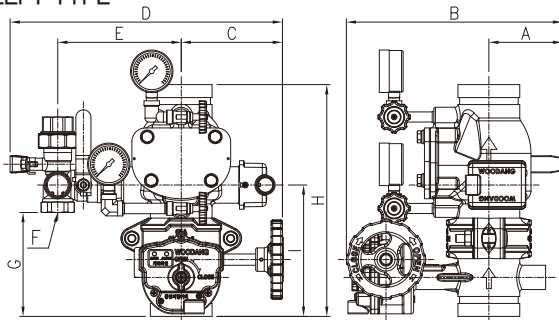


C-TYPE Drain Valve



U-TYPE Drain Valve

LEFT TYPE

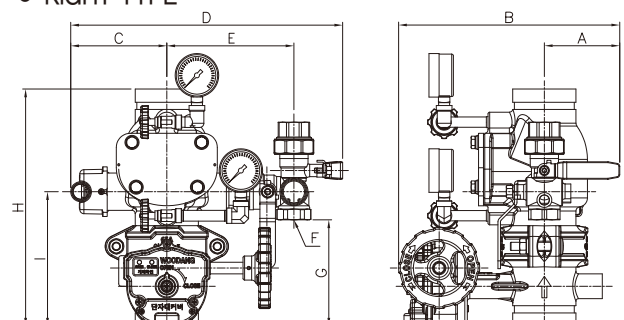


Model Number	A	B	C	D	E	F(DRAIN)	G	H	I	Drain Valve
AVAJ1065	70	246	125	339	121	25A	122	286	162.4	C TYPE
AVAJ1080	77	260	125	346	128	25A	122	286	162.4	
AVAJ1100	86	292	130	358	135	25A	147	325	187	
AVAJ1125	122	336	143	394	158	25A	166	365	205.5	
AVAJ1150	135	361	143	394	158	25A	210	408	249.6	

Model Number	A	B	C	D	E	F(DRAIN)	G	H	I	Drain Valve
AVAJ1065	91	267	125	336	153	25A	128	286	162.4	U, L TYPE
AVAJ1080	91	274	125	344	160	25A	128	286	162.4	
AVAJ1100	91	297	130	355	167	25A	153	325	187	
AVAJ1125	122	336	143	381	180	25A	172	365	205.5	
AVAJ1150	135	361	143	381	180	25A	216	408	249.6	

※16K Specification: 65A-150A (inquire separately)

RIGHT TYPE



Model Number	A	B	C	D	E	F(DRAIN)	G	H	I	Drain Valve
AVAJ1065	70	246	116	339	121	25A	122	286	162.4	C TYPE
AVAJ1080	77	260	124	346	128	25A	122	286	162.4	
AVAJ1100	86	292	130	358	135	25A	147	325	187	
AVAJ1125	122	336	143	394	158	25A	166	365	205.5	
AVAJ1150	135	361	143	394	158	25A	210	408	249.6	

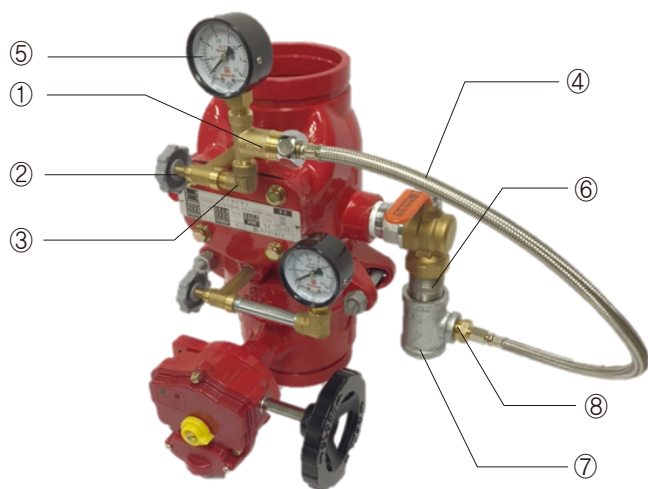
Model Number	A	B	C	D	E	F(DRAIN)	G	H	I	Drain Valve
AVAJ1065	91	267	116	336	153	25A	128	286	162.4	U, L TYPE
AVAJ1080	91	274	124	344	160	25A	128	286	162.4	
AVAJ1100	91	297	130	355	167	25A	153	325	187	
AVAJ1125	122	336	143	381	180	25A	172	365	205.5	
AVAJ1150	135	361	143	381	180	25A	216	408	249.6	



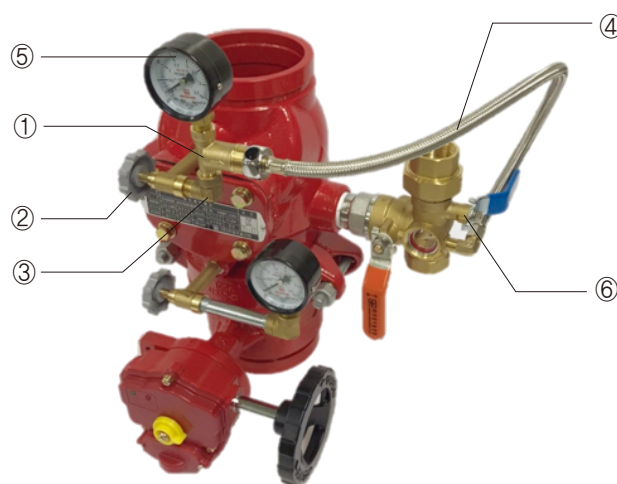
## RELIEF VALVE FOR ALARM VALVE

### Product Feature

- The overpressure discharge device is installed on the secondary side of the alarm valve to adjust the pressure generated by the pump to the set pressure.
- Default Set Pressure : 1.1 MPa  $\pm$  0.1



C-TYPE Drain Valve



U-TYPE Drain Valve

#### Discharge Type-7, Discharge Type-8

- ① Overpressure Discharge Device
- ② Needle Valve (secondary)
- ③ Service Elbow (8A)
- ④ Connecting Hose
- ⑤ Pressure Meter (secondary)
- ⑥ Short Nipple
- ⑦ T-Pipe
- ⑧ Flare Nipple

#### Discharge Type-6

- ① Overpressure Discharge Device
- ② Needle Valve (secondary)
- ③ Service Elbow (8A)
- ④ Connecting Hose
- ⑤ Pressure Meter (secondary)
- ⑥ Flare Elbow

### Setting Procedure

1. Connect ③, ①, ⑤ in sequential order to ② needle valve.
2. Connect ⑥, ⑦ to the bottom of the drain valve.  
※ In case of U-Type, connect ⑥ to drain valve side.
3. Connect ① and ⑧ using the ④ connecting hose.  
※ In case of U-Type, connect ① and ⑥ using the ④ connecting hose.
4. Open the ② needle valve by turning it clock-wise to complete the setting.

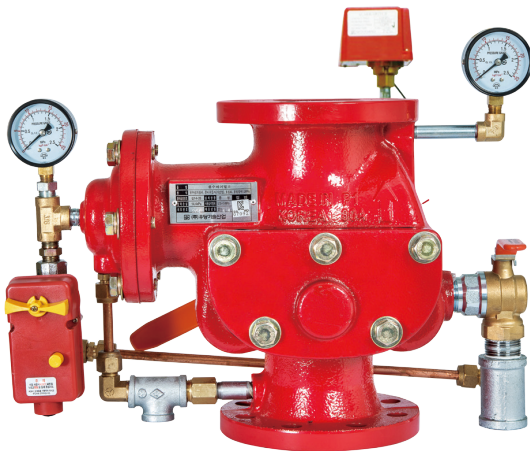
OPEN TYPE

PRE-ACTION VALVE AVPV1 / AVPV2 / AVPG1

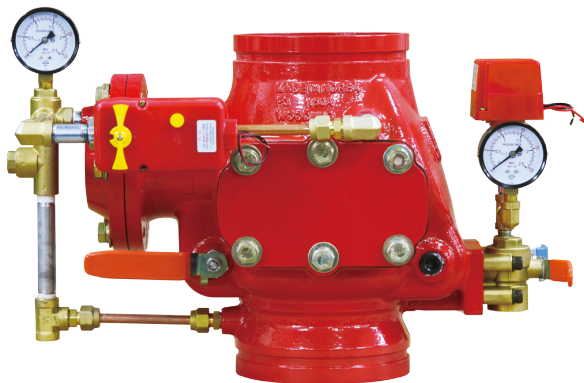
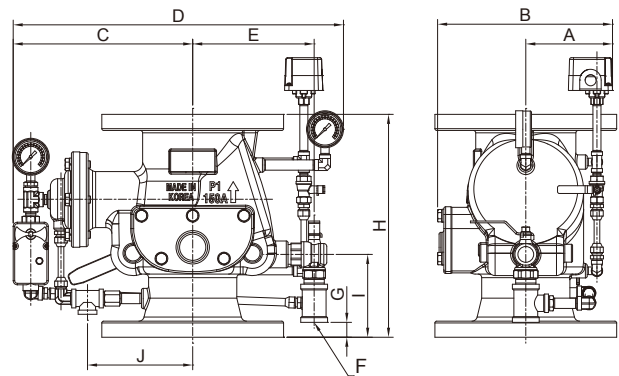
/Korea Fire Institute inspection goods

Product Feature

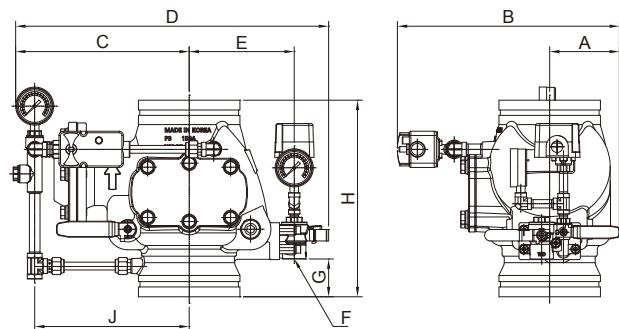
- The assembly structure prevents malfunctions by absorbing water and pressure shocks, and has excellent air tightness.
- The electric ball valve is a multifunctional valve capable of electrically opening the valve according to an automatic fire detector and manually opening the valve during emergencies. It offers convenient operation by concentrating operating parts used for opening the body into a single location.
- It is built as a clapper swing type structure which features minimized internal friction losses.



AVPV1 / AVPV2



AVPG1



Model Number	AVPV1080~150	AVPV2100, 150	AVPG1080~150
Title Standard	1MPa~80A~150A	1.6MPa~100, 150A	1MPa~80A~150A
Working Pressure Range	0.15 ~ 1.4MPa	0.15 ~ 2.2MPa	0.15 ~ 1.4MPa
Operation Method	KS B 1511 10K FF Flange	KS B 1511 16K FF Flange	KS B 1507 Grooved Joint
Connection Standard	Clapper Swing		
Applicable Liquid	Water		
Material	Body, Clapper (GCD450 Ductile Cast)		
	Diaphragm/Sheet (NBR)		

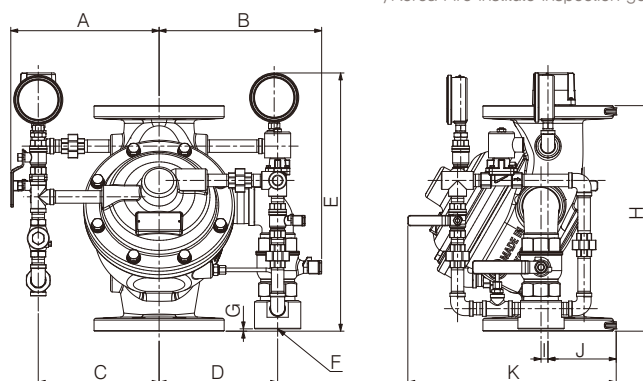
Model Number	A	B	C	D	E	F(DRAIN)	G	H	I	J	Pressure Loss
AVPV1080	155	266	276	466	166	25A	9	304	123	147	14.4 kPa
AVPV1100	155	266	276	466	166	25A	9	304	123	147	14.2 kPa
AVPV1500	146	294	302	554	204	25A	25	374	139	172	4.6 kPa
AVPV2100	155	268	276	466	166	25A	9	304	123	147	14.2 kPa
AVPV2150	146	305	302	554	204	25A	25	374	139	221	4.6 kPa
AVPG1080	114	327	227	412	131	25A	37.5	240	—	196	19.0 kPa
AVPG1100	114	327	238	434	141	25A	42.5	260	—	207	20.3 kPa
AVPG1150	114	362	283	510	178	25A	61.5	320	—	252	14.5 kPa

## DELUGE VALVE AVDV1 / AVDM1

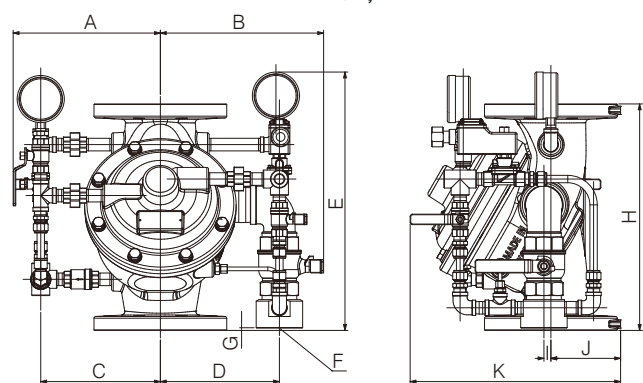
/Korea Fire Institute inspection goods

### Product Feature

- The assembly structure utilizes tightening the seat packing to the cylinder, which provides better maintenance capabilities and air tightness, and compared to conventional seat ring molds, it has no risk of breaking the packing.
- As it is a cylinder type, it is possible to install vertically or horizontally, and the pressure loss due to internal valve interference is minimal during fire extinguishing.
- It features a solenoid valve which allow the administrator to activate the automatic recovery after fire extinguishing.



D2-16K, 10K



D2-ANSI

D2 16K ( KS / FF )

Model Number	A	B	C	D	E	F(DRAIN)	G	H	I	J	K	Pressure Loss
AVDV16100	257	282	210	205	447	50A	4	390	12	118	361	20.3 kPa
	247	258	200	198	447	25A	46	390	12	118	361	
AVDV16150	285	326	237	250	509	50A	9	500	45	156	432	20.5 kPa
	285	289	237	241	509	25A	51	500	45	156	432	

D2 10K ( KS / FF )

Model Number	A	B	C	D	E	F(DRAIN)	G	H	I	J	K	
AVDV10080	243	239	197	183	411	25A	13.5	350	15	98	333	
AVDV10100	244	254	199	198	436		57.5	390	12	111	353	
AVDV10150	282	297	237	241	498		62.5	500	45	145	421	

D2 Explosion Proof Type ( ANSI / FF )

Model Number	A	B	C	D	E	F(DRAIN)	G	H	I	J	K	
AVDM100802Y	272	250	199	182	482	32A	4	350	15	100	335	
AVDM101002Y	280	282	206	205	507	50A	4	390	12	120	363	
AVDM101502Y	322	325	249	249	569	50A	9	500	45	145	421	
AVDM102002Y	369	352	296	276	644	50A	48	620	68	177	509	

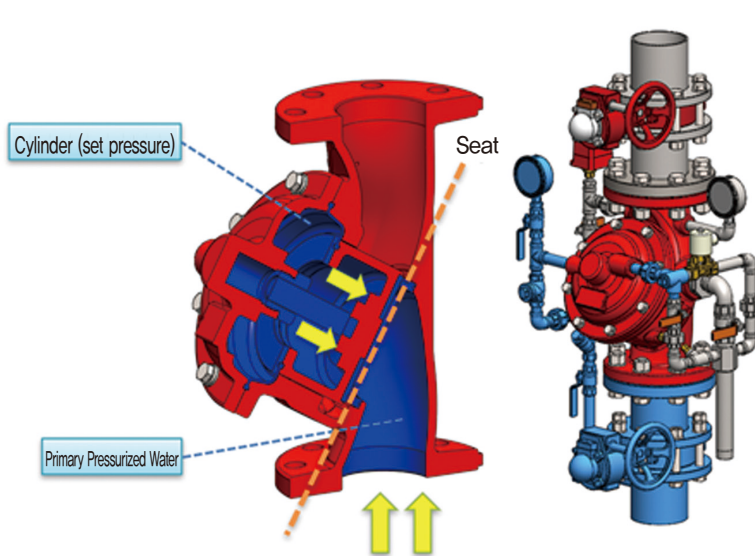
D2 Non-explosion Proof Type ( ANSI / FF )

Model Number	A	B	C	D	E	F(DRAIN)	G	H	I	J	K	
AVDM100801Y	247	250	199	182	422	32A	4	350	15	100	335	
AVDM101001Y	254	282	206	205	445	50A	4	390	12	120	363	
AVDM101501Y	297	325	249	249	509	50A	9	500	45	145	421	
AVDM102001Y	343	352	296	276	620	50A	48	620	68	177	509	

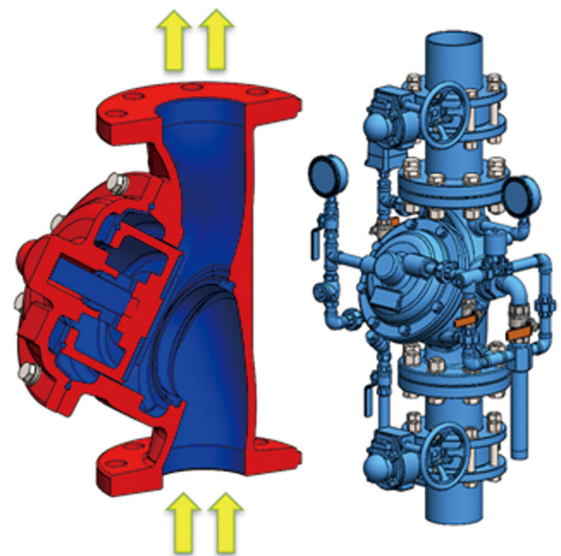
## DELUGE VALVE

### ● Product Interior Flow

**Setting** Primary water pressure is blocked



**Operation**

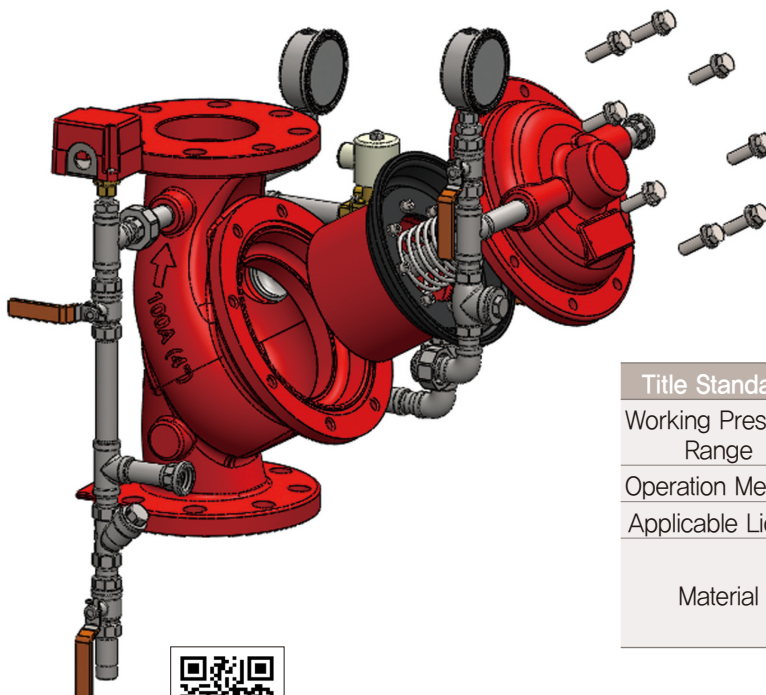


### ● Automatic Recovery Function

Closing the solenoid valve in the disaster prevention room after fire extinguishing will automatically recover the valve.

### ● Convenience Maintenance

Key components can be replaced conveniently by removing the front cover without completely releasing the valve.



Scan the QR code on the product for more information.

Title Standard	1.6 MPa – 100A, 150A
Working Pressure Range	0.15 ~ 2.2 MPa
Operation Method	Diaphragm Type
Applicable Liquid	Water
Material	Body, Cylinder (GCD450 Ductile Cast)
	Seat Ring (CAC 406 Brass Cast)
	Diaphragm /Sheet(NBR)



## FLEXIBLE SPRINKLER JOINT SP JOINT

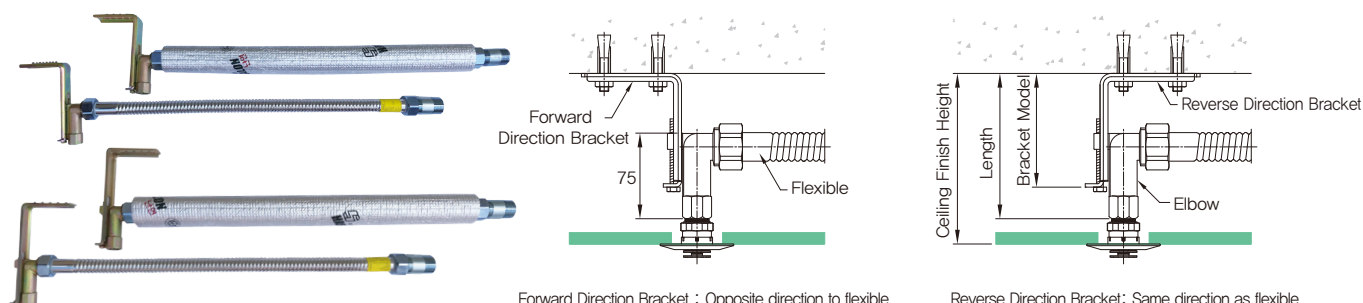
SP-JOINT can be easily adjusted to fit ceilings and sprinkler heads, making the installation process quick and simple, while reducing the installation cost. It is also easy and convenient to work even in limited ceiling spaces.

### SP-JOINT for Apartments

/Korea Fire Institute inspection goods

#### Product Feature

- It is classified according to the direction according to the bracket shape (forward/reverse direction), and it features various bracket models according to ceiling finish height allowing easy installation.



#### Specification

Model Name	AJLS0700	AJLS1000	AJLS1200	AJLS1500	AJLS1800	AJLS2000	AJLS2300	AJLS2500	AJLS3000	AJLS3200
Length (mm)	700	1000	1200	1500	1800	2000	2300	2500	3000	3200

※ Please contact us for other specifications.

#### APT bracket height

Ceiling Finish Height		150	180	200	220	240	260	280	300	350	400
bracket model		700	1000	1200	1500	1800	2000	2300	2500	3000	3200
Elbow Length		75									
Length	Min	105	135	155	175	195	215	235	255	305	355
	Standard	130	160	180	200	220	240	260	280	330	380
	Max	155	185	205	225	245	265	285	305	355	405

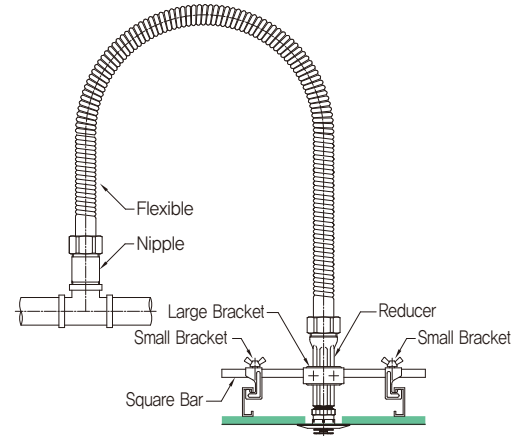
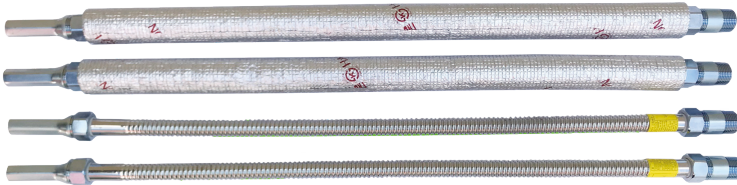
※ Items to Check before Ordering : ①Ceiling Finish Height ②Bracket Length ③Bracket Direction

# SP-JOINT FOR MALLS

/Korea Fire Institute inspection goods

## Product Feature

- It is a hook type large bracket, allowing easy installation and ensuring rigidity.



## Specification

Model Name	AJSS0700	AJSS1000	AJSS1200	AJSS1500	AJSS1800	AJSS2000	AJSS2300	AJSS2500	AJSS3000	AJSS3200
Length (mm)	700	1000	1200	1500	1800	2000	2300	2500	3000	3200

※ Please contact us for other specifications. / Items to Check before Ordering : Nipple Type

## Regular Components

### Reducer



PF1"(M)\*PT1/2"(F)

### Large Bracket



### Small Bracket



### Square Bar



## Nipples

### Screw Pipes



PF1"(M)\*PT1"(M)  
Used to connect PT screws for piping

### Welded Pipes



PF1"(M)  
Used for pipe welding

### Connection Standard



PF1"(M)\*PF1"(M)  
Used to connect Flexible Joints

## Other Components

### Elbow



PF1"(M)\*PT1/2"(F)

### Adapter



PF1"(M)\*PT1"(F)  
Used to connect dry pendants

## Parts

Parts Name	Material (Finish)	Mall	Apartment
Flexible Pipe	STS 304 (0.3t)	○	○
Nut	SM 20C (galvanized), STS 304, C3771BE	○	○
Insulation Ring	NYLON 66	○	○
Packing	EPDM	○	○
Reducer	SPPS (galvanized)	○	
Nipple	SPPS (Nickel coat), C3771BE	○	○

Parts Name	Material (Finish)	Mall	Apartment
Large Bracket	SPPS (galvanized)	○	
Small Bracket	SPPS (galvanized)	○	
Square Bar	SS41 (galvanized)	○	
Elbow	SM 20C (galvanized), C3771BE		○
Forward Direction Bracket	SPCC PO (galvanized)		○
Reverse Direction Bracket	SPCC PO (galvanized)		○

# AUTOMATIC TEMPERATURE CONTROL SYSTEM FOR HEATING

## ● Independent Heating System

With the application of the heating system and heating control, patented technologies of Woodang Technological Industry, the independent heating system is designed to supply the proper flow rate according to the heating load calculated based on the area of each room, and it is an optimized heating system that adjusts the number of valves according to the temperature of each room in real time.

## ● District Heating System

In the case of central or regional heating, if the number of households not using heating pipes in the same line is high, the differential pressure may become high and the flow rate may become excessive. With the application of the variable constant flow valve of Woodang Technological Industry, the flow rate supplied to each household can be adjusted automatically which lead to reduced heating costs.

## CONTROLLER



MC-105

Model Name	MC-105
Exterior Dimensions (W×D×H)	167×35×89(mm)
Power	AC 220V / 60Hz
Number of Controlled Valves	Max, 8EA (Max, 16EA with controller)
Valve Control Type	Non-contact TR Type

## TEMPERATURE CONTROLLER


**MR-501**

**TAMAN-01(B)**

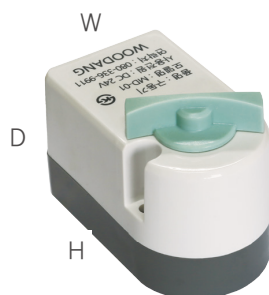
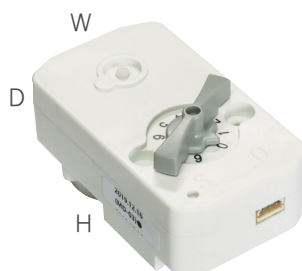
**TAMAN-01(W)**

**WM-3  
(Daewoo)**

**DM-1  
(Daelim)**

Model Name	MD-501	TAMAN-01(B/W)	WM-3 (Daewoo)	DM-1 (Daelim)
Exterior Dimensions (W×D×H)	80 × 12 × 120(mm)	80 × 10 × 118(mm)	58 × 14 × 89(mm)	105 × 13 × 105(mm)
Power	DC 12V			
Temperature Range	5°C			
Communication Method	Nonpolar 2-line Type			
Temperature Setup Unit	0.5°C(MR-501, WM-3) / 1°C(DM-1)			

## ACTUATOR

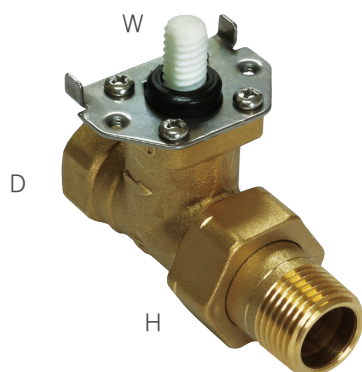

**MD-01**

**MD-03**

**MD-AA(B)3**

Model Name	MD-1	MD-3	MD-5AA3	MD-5AB3
Exterior Dimensions (W×D×H)	45×48×76(mm)	51×40×89(mm)	53×75×102(mm)	53×75×102(mm)
Power	DC 24V	DC 12V	DC 24V	DC 220V
Actuation	DC Stepping Motor Actuation	DC Stepping Motor Actuation	AC Motor Actuation	AC Motor Actuation
Torque	4.0 kg.cm or higher			
Operation Temperature	5 ~ 50°C			
Manual Control	Manual Control during Emergencies Available			
Open/Close Check	Open/Close Check			

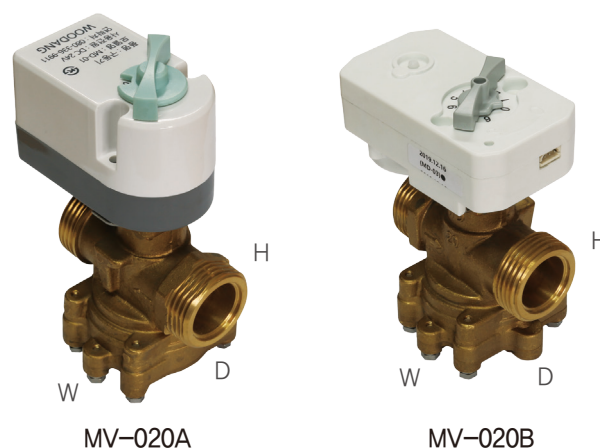


## AUTOMATIC FLOW CONTROL VALVE



Model Name	Automatic Flow Control Valve
Exterior Dimensions (W×D×H)	45 × 65 × 82(mm)
Diameter	15A
Operation Temperature	85°C or lower
Operation Pressure	Max. 10 kgf/cm <sup>2</sup>
Test Pressure	No leaking at 17.5kgf/cm <sup>2</sup> for 1 minute
Max. Flow	23.5 LPM ±5% or less

## VARIABLE CONSTANT FLOW VALVE



Model Name	MV-020A	MV-025A	MV-020B	MV-025B
Title Standard	20A	25A	20A	25A
Operating Voltage	DC 24V		DC 24V	
Exterior Dimensions (W×D×H)	91×65×137(mm)	96×65×141(mm)	95×65×118(mm)	100×65×122(mm)
Flow Control Range	2~10 or 4 ~ 22LPM	5 ~ 34LPM	2~10 or 4 ~ 22LPM	5 ~ 34LPM
Connection Standard	Inlet/Outlet: 20A [PT 3/4" (female)/ PF 1" (male)], 25A [PT 1" (female)/ PF 1 1/4" (male)]			
Material (body)	Brass (C3771BE)			
Applicable Liquid	Hot Water			
Liquid Temperature	5°C~85°C (no freezing)			
Operation Pressure	Max. 10 kgf/cm <sup>2</sup>			
Differential Pressure Range	0.4 ~ 2.0 kgf/cm <sup>2</sup>			
Accuracy	±5% of set flow			

## ● Usage &amp; Features

- It is used as the flow control valve for the heating system.
- It provides a constant flow regardless of differential pressure change variation in the system (within the differential pressure range).
- It can be used as a constant flow valve when the actuator is disconnected, and it can be used as a hybrid valve when the actuator is connected.
- It features a strainer within the valve which prevents valve failure due to foreign substances.
- It has long product life, low flow deviation and low noise levels.

# FCU HYBRID VALVE

## PVC COMPOSITE VALVE

It has flow control function that limits the maximum flow rate of cold/hot water supplied to the FCU according to the operating conditions, has constant flow function that compensates for the flow changes by automatically adjusting the valve differential pressure changes in the supply–refund line, and has an automatic regulation function controlled by the actuator which receives signals from the FCU.

## FCU HYBRID VALVE



FV-020A



FV-020A with Insulation



FV-020C (AC 24V)  
FV-020D (AC 220V)



FV-020C with Insulation  
FV-020D with Insulation

Model Name	FV-020A20L	FV-025A30L	FV-020C20L	FV-025C30L	FV-020D20L	FV-025CD30L
Title Standard	20A	25A	20A	25A	20A	25A
Operating Voltage	DC 24V		AC 24V		AC 220V	
Exterior Dimensions (W×D×H)	91×65×137 (mm)	96×65×141 (mm)	119×56×160 (mm)	124×56×160 (mm)	119×56×160 (mm)	124×56×160 (mm)
Flow Control Range	4 ~ 22LPM	5 ~ 34LPM	4 ~ 22LPM	5 ~ 34LPM	4 ~ 22LPM	5 ~ 34LPM
Connection Standard	Inlet/Outlet : 20A [PT 3/4" (female) / PF 1" (male)], 25A [PT 1" (female) / PF 1 1/4" (male)]					
Material (body)	C3771BE + Ni-Cr Coating					
Applicable Liquid	Cold / Hot Water					
Liquid Temperature	5℃ ~ 85℃ (Cold/Hot Water)					
Operation Pressure	Max. 10 kgf/cm <sup>2</sup>					
Differential Pressure Range	0.4 ~ 2.0 kgf/cm <sup>2</sup>					
Accuracy	±5% of set flow					

### ● Usage & Features

- It is used as the flow control valve for the FCU (Fan Coil Unit) of heating and cooling systems.
- It provides a constant flow regardless of differential pressure change variation in the system (within the differential pressure range).
- It features both female (PT) and male (PF) bolts allowing installation in various environments.
- It can be used as a constant flow valve when the actuator is disconnected, and it can be used as a hybrid valve when the actuator is connected.
- It features a strainer within the valve which prevents valve failure due to foreign substances..
- It utilizes diaphragm actuation which has longer product life, low flow deviation and low noise levels compared to cartridge types.

※ Insulation must be purchased separately.

# OTHERS

Others



Indoor Fire Hydrant Water Discharge Outlet ABIH1

## Product Specification

/Korea Fire Institute inspection goods

Model Number	ABIH1040	ABIH1065
Title Standard	40A	65A
Connection Standard(Inlet/Outlet)	PT 1½" / FE 40	PT 2½" / FE 65
Test Pressure	2.0MPa	
Material	Body, Cover BC 1 (Brass)	



Sight Glass ABSG1

## Product Specification

Model Number	ABSG1025	ABSG1025
Connection Standard	PT 1"(25A) – Male Bolt	PT 1"(25A) – Male Bolt
Orifice Diameter	Ø11.3	Ø11.3
Overall Length	116mm	99.5mm
Material	SS400 (galvanized)	SS400 (galvanized)



Area Flow Meter for Fire Extinguishing ABFM1, ABFF1

## Product Specification

Model Number	ABFM1040~100	ABFF1065~150
Title Standard	10K-40A~100A	10K-65A~150A
Operation Pressure	MAX 1.0 MPa	
Applicable Liquid	Water	
Measurement Level	±3.0%	
Material	Base Socket	GCD 450
	Orifice Plate	STS 304
	Cell Block Body	Brass
	Cover	SS 41
	Taper Tube	Borosilicate
	Float	STS 304
	Packing	NBR
Connection Standard	PT Bolt	KS B 1511 10K FF Flange

MODEL	SIZE	RANGE OF FLOW RATE (l/min)
ABFM1 (Threaded)	40A	110 ~ 550
ABFM1 (Threaded) ABFF1 (Flange)	50A	220 ~ 1100
	65A	450 ~ 2200
	80A	700 ~ 3300
	100A	900 ~ 4500
ABFF1 (Flange)	125A	1200 ~ 6000
	150A	2000 ~ 10000

※ Area Distance: Flange Type 200mm



Auto Drip Valve ABAD1

## Product Specification

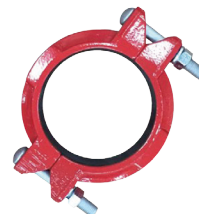
Model Number		ABAD1020
Title Standard		20A
Applicable Liquid		Water
Set Pressure		0.07MPa
Applicable Liquid		Water
Material	Body	C3771BE
	Sheet	Brass / NBR
	Spring	STS 304
Connection Standard		Female PT ¾"(20A) / Female PT 1"(25A)



Relief Valve ABRM1, ABRM2

## Product Specification

Model Number	ABRM1025	ABRM2025
Title Standard	10K-25A	20K-25A
Operation Pressure	1.0MPa	2.0MPa
Set Pressure	1.0MPa ~ 1.3MPa	1.3MPa ~ 2.2MPa
Operating Liquid	Water	
Material	Body	GCD 450
	Sheet	NBR
	Spring	STS 304 SUP 4
Connection Standard	PT 1"(25A)	



Grooved Joint

## Product Specification

/Korea Fire Institute inspection goods

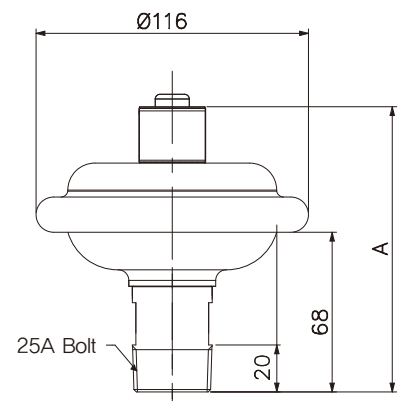
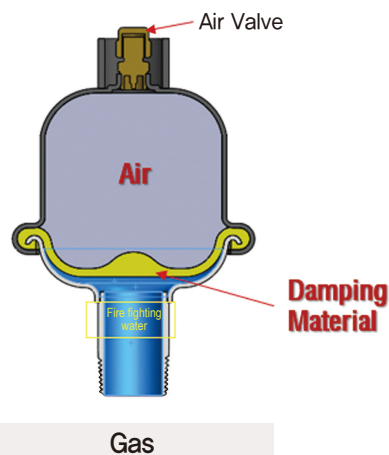
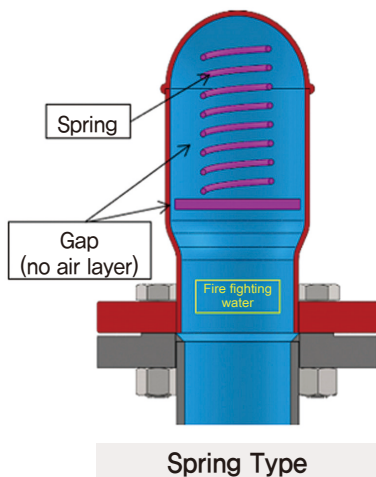
Title Standard	65A	80A	100A	125A	150A
KFI Certificate Number	이음 18-5				
Pressure	1.6MPa				
Operation Pressure	0.15 ~ 2.2MPa				
Type	Flow Type Coupling				
Material	Joint		Gasket (Packing)		
	Ductile (GCD450)		Rubber (NBR)		
	Country of Origin: Korea		Country of Origin: Korea		
Bolt & Nut	M10 * 60L	M12 * 70L	M12 * 85L	M16 * 110L	

## Gas Water Hammering Absorber



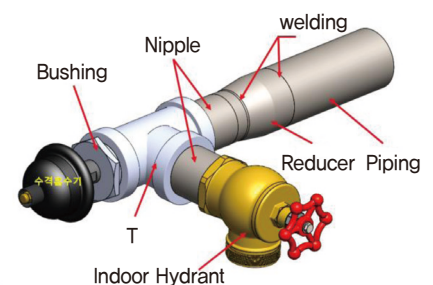
	Unit	WHA 40~150	Size	Weight (g)	A(mm)
Operation Pressure	MPa	0~1.0	40/50	743	122
Max. Water Hammering Pressure	MPa	2.5	65	754	134
Connection Standard	PT Bolt	25A Bolt	80	770	138
Air Charge Pressure	MPa	0.4	100	821	152
Installation Direction	—	Vertical, Horizontal	125	904	172
Operating Liquid	—	Water	150	910	179
Material	Body	SPCC			
	Diaphragm	B II 717			

### Comparison between Spring Type vs Gas Type Water Hammering Absorber



### Product Structure & Features

1. Joint Patent Registration with Fire Equipment Inspection Corporation (Patent Number: 10-2019-0137773)
2. Outstanding water hammering absorption with hybrid structure (compressed air and diaphragm) to offset water hammering pressure
3. Simple structure (top/body, diaphragm, air valve), and light weight (about 1kg) allow easy handling
4. Exclusion of flange, gasket and bolt&nut reduces overall installation costs





# Bright Smiles of Families,

This is where **products of Woodang** that pursues perfection and the **spirit of safety first**.



## History

- 1983** 04 Foundation of Woodang Construction Co., Ltd.  
10 Relocation of HQ: 261-4 Yeomchang-dong, Gangseo-gu, Seoul
- 1990** 01 Acquisition of Manufacturing Permit for Fire Extinguishing Machine and Apparatus
- 1997** 07 Addition of New Business: Specialized Fire Fighting Facility Installation  
09 Acquisition of ISO 9001 (ABS-QE) - [Manufacturing]
- 1998** 11 Renaming of Company: Woodang Technological Industries  
Relocation of HQ: 661-15 Pungmu-dong, Gimpo-si, Gyeonggi-do
- 1999** 02 of Korea's 1st Automatic Opening/Closing Dry Pipe Valve (100A, 150A)
- 2001** 11 Designation as INNO-BIZ [No. 1061-0713]
- 2002** 01 Establishment of Affiliated Research Center (Korea Industrial Technology Association No. 20021073)  
05 Acquisition of ISO9001 (ABS-QE) - [Manufacturing, Construction]
- 2003** 06 Designation as Industrial Family Company [No. 03-300] Kyeonggi Small and Medium Business Center
- 2006** 05 Inauguration of CEO Choi Yeong-pyo
- 2007** 07 Relocation of HQ: 483-1 Ilsan-ri, Mohyeon-myeon, Cheoin-gu, Yongin-si, Gyeonggi-do  
10 Addition of Business: Independent Room Temperature Control System
- 2008** 02 Acquisition of Venture Company Certificate (No. 20080100807, Korea Technology Finance Corporation)  
04 Acquisition of High Efficiency Energy Apparatus Certificate [Korea Energy Management Corporation]  
- Automatic Temperature Controller for Heating (Proportional Control) No. 47  
- Automatic Temperature Controller for Heating (Open/Close Type) No. 51  
08 Designation as 2008 Promising Gyeonggi-do Small and Medium Business
- 2009** 12 Expansion of Capital: 800,000,000 KRW
- 2011** 08 Acquisition of High Efficiency Energy Apparatus Certificate (Automatic Temperature Controller for Heating (Open/Close Type) No. 51) [Korea Energy Management Corporation]
- 2012** 05 Acquisition of Group Standard Certificate (Hot Water Distribution System Proportional Control Type 05A) [Korea Association of Equipment Technology]  
Acquisition of High Efficiency Energy Apparatus Certificate (Automatic Temperature Controller for Heating (Proportional Control Type) No. 83) [Korea Energy Management Corporation]  
06 Acquisition of High Efficiency Energy Apparatus Certificate (Automatic Temperature Controller for Heating (Open/Close Type) No. 47) [Korea Energy Management Corporation]
- 2013** 10 Development of Fully Automatic Sprinkler Head Assembly System
- 2015** 06 Acquisition of High Efficiency Energy Apparatus Certificate (Automatic Temperature Controller for Heating (Proportional Control Type) No. 85) [Korea Energy Management Corporation]
- 2016** 04 Registration of Patent for Sprinkler Head Assembly with Length Adjustment Capability
- 2017** 03 Designation of Good Tax Payer of Yongin  
07 Acquisition of Korea's 1st KFI Certificate for Grooved Joint for Fire Extinguishing  
08 Acquisition of KS B6612 (Automatic Temperature Control System for Heating)
- 2019** 05 Registration of Patent for Side Wall Fusible

## ● 4C Analysis of Woodang Technological Industries

- Product reliability and awareness established through accumulation of know-how based on history and tradition
- Sound financial structure and credit

- Valve: L/R Drain selection, convenient on-site installation, convenient setup

Consumer Benefit

Consumer Opportunity Cost

Convenience

Communication

- High product quality and stable supply with the application of Korean casting (Alarm Valve, Pre-action, Butterfly, etc.)
- Prompt product delivery with constant inventory stock of popular models

- Production of various products reflecting ease of installation
- Prompt A/S



# WOODANG®



Since 1983

**WOODANG TECHNICAL INDUSTRY CO., LTD.**

Head Office & Factory

17033

3-8, Oegaeil-ro 21beon-gil, Mohyeon-eup, Cheoin-gu,  
Yongin-si, Gyeonggi-do, Republic of Korea

TEL : +82-31-336-9911 FAX : +82-507-555-0309

**A/S Customer Center: 080-336-9911 (FREE TELEPHONE)**

[www.woodang.co.kr](http://www.woodang.co.kr)

E-mail : [webmaster@woodang.co.kr](mailto:webmaster@woodang.co.kr)

※ Product specifications and dimensions included in this catalog  
may change for quality improvement without prior notification.