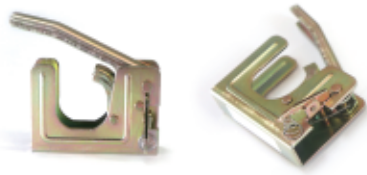







Spare parts

Center bracket	
One-touch center bracket	Cap type center bracket
B-COT 	B-CC-B 

One Touch Type Bracket
Quick time Fixed Bracket
Patented Center Bracket
Carbon Steel, Zinc-Plated

Easier Fixed Bracket
Cap Type Bracket
Patented Center Bracket
Carbon Steel, Zinc-Plated

End bracket			
One-touch end bracket		Butterfly end bracket	
B-EOTS 	B-EOTL 	B-ES-B 	B-EL-B 

Short One touch End Bracket
68mm Length
Carbon Steel / Zinc-Plated

Long One touch End Bracket
105mm Length
Carbon Steel / Zinc-Plated

Short End Bracket
68mm Length
Carbon Steel / Zinc-Plated


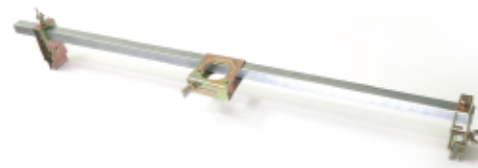
Long End Bracket
105mm Length
Carbon Steel / Zinc-Plated

B-E1-B 	B-EWS-B 	B-EHC-B 
--	---	---

Metal Stud End Bracket
Carbon Steel / Zinc-Plated

Wood Beam Stud Bracket
Carbon Steel / Zinc-Plated

Hat Furring Channal
End Bracket
Carbon Steel / Zinc-Plated

Assembled Bracket Set	
One-touch assembled bracket set	Cap type assembled bracket set
AB-OTS 	AB-CTS 



Greetings...

Established in 1989, DAEJIN SANUP Co has been manufacturing machines and construction material for over 30 years. It started producing fire sprinkler joint in 2004. With experience and knowhow, the products of our company are noted of their high quality with competitive price and most of the products are exported in many countries.

DAEJIN has acquired ISO9001-2000, WQA, KFEIC (Korea Fire Equipment Inspection Cooperation, FM and UL certificates. Our reputable flexible sprinkler joints are the preferred choice worldwide. Our flexible sprinkler joints along with their assembly part products come in such a wide variety of shapes and sizes that we feel confident that our products would match your expectations and particular needs. Thank you.

Lim, Young Soon

President
DAEJIN SANUP CO.

HISTORY...

1989.02 Daejin Sanup Co was established
1990.02 Train Wheel Production
1999.01 Precise shaft processing for washing machines from Sanio, Toshiba
2004.08 ISO 14001 certificate
2007.01 KFI(Korea Fire Institute) certificate for sprinkler joint
2008.08 ISO 9001 certificate
2008.12 FM approval for braided sprinkler joint DJ25B
2009.12 UL certificate for braided sprinkler joint DJ25B
2010.08 KFI certificate for straight sprinkler joint 10-14, for elbow sprinkler joint 10-5)
2011.03 FM approval for braided sprinkler joint DJ28B
2011.06 Venture Business Certification (Technology Guarantee Fund)
2011.06 Recognized as a department dedicated to technology (technology development team)
2011.08 UL certificate for unbraided sprinkler joint DJ25UB
2011.11 KFI(Korea Fire Institute) certificate for straight sprinkler joint 11-99 and 11-100)
2011.12 Quality Management Capability Evaluation Certification (Korea Fire Industry Technology Institute)
2012.05 Certificate of Origin Exporter for every Item (Seoul Customs)
2012.06 Selected as a promising export company (Gyeonggi Small and Medium Business Administration)
2012.12 Million Dollar Export Tower Award
2013.05 UL certificate for new design of End Bracket mounts (B-EL-B)
2013.08 UL certificate for the new design of the center and end bracket mounts (B-COT/B-EOT)
2014.09 FM approval for new design of Center and End Bracket mounts (B-EL-B, B-COT/B-EOT)
2014.12 Three Million Dollar Export Tower Award
2015.07 CAS gas pipe certification
2015.10 Selected as a promising small and medium business in Gyeonggi-do
2016.12 Five Million Dollar Export Tower Award Export promotion company commendation
2017.04 ISO 9001 certification (2015)
2017.05 Established production in Vietnam [Dajin Vietnam]
2018.04 Signed MOU with Vietnam company [Da Boi Nam]
2018.08 Established R & D Center
2018.09 UL certificate for unbraided sprinkler joint DJ25UB
2018.12 Revenue of local subsidiary in Vietnam reached US \$ 5.2 million
2019.01 Acquired NAMSON Enterprise, a company in Vietnam
2019.03 UL certificate for braided sprinkler joint DJ25B
2019.11 UL certificate for braided sprinkler joint DJ28B (200psi)



12 Wolmun-Gil, Paltan-Myeon, Hwaseong-Si, Gyeonggi-Do, Korea
Tel. +82-31-354-1747 Fax. +82-31-354-7678
E-mail : daejinsp@gmail.com



Genie[®]systems

Flexible and Problem Free

FLEXIBLE SPRINKLER JOINT

3 SECONDS
INNOVATION



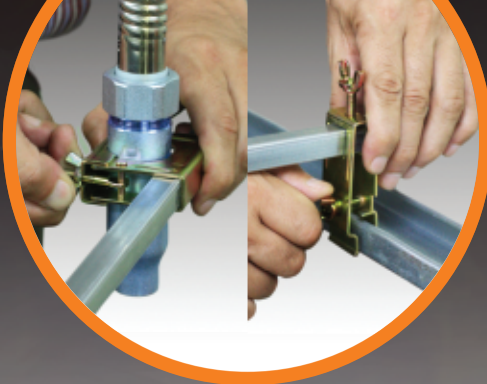
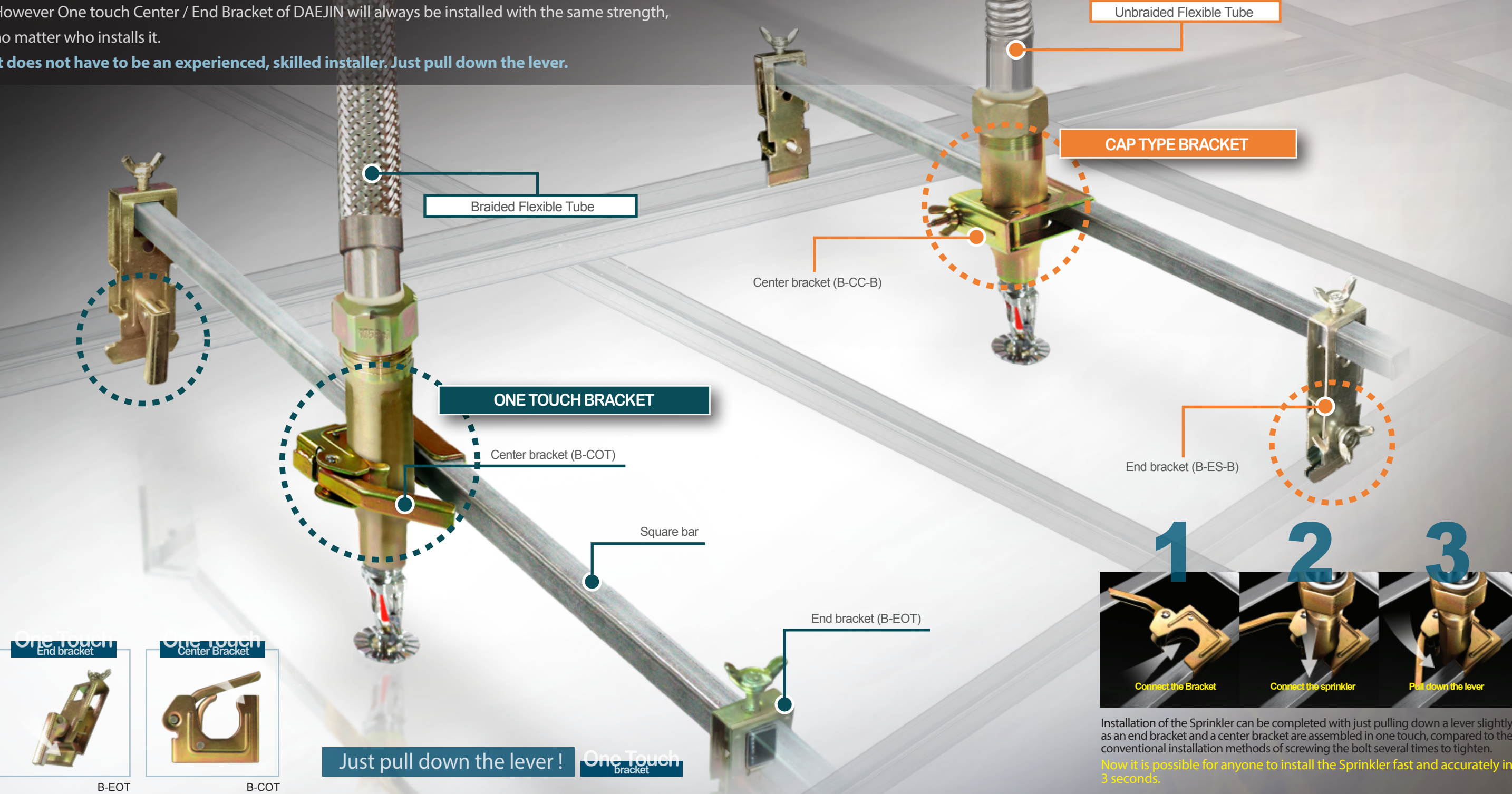
www.genie-systems.com



FLEXIBLE SPRINKLER JOINT

The fixed strength of the existing Bracket can be changed according to an environment and an installer. However One touch Center / End Bracket of DAEJIN will always be installed with the same strength, no matter who installs it.

It does not have to be an experienced, skilled installer. Just pull down the lever.



Daejin's Hit Item!

Cap Type bracket

This image is only for understanding of the products, it can be different from the actual products.



Technical Data

Temperature	225 °F	
Working pressure	175 psi	UL-DJ28B: 200psi
Maximum Bend Radius	3"/4"/7.5"(UL type), 8"/9"/10"(FM type)	UL: Ø 25-(4"), Ø26.8(7.5"), Ø28(3") FM: Ø26.8(10"), Ø28(9"), Ø32(8")
K-Factor	1/2" Outlet	5.6 gpm
	3/4" Outlet	11.2 gpm(LPCB), 8.0 gpm(UL/FM)

Features

Length (mm)	700,1000,1200,1500,1800	
Reducing nipple Dia	1/2", 3/4" NPT or BSPT (Straight or 90 degree elbow)	
Type	Unbraided (ø 25)	UL certificate / LPCB certificate
	Braided (ø 26.8)	UL and FM approval
	Braided (ø 28)	UL and FM approval
	Braided (ø 32)	FM approval

FM FRICTION LOSS DATA DJ25B / Series Braided Hose with Fittings

FM: Minimum bend radius 10"(254mm), where C=120
Rated Working Pressure 175psi(1205kPa)

Model	NPT in.	k-Factor	Number of Bends	Hose Assembly length in. (mm)	Equivalent Length of 1 in. Schedule 40 Pipe, ft (m)
DJ25B	1/2	5.6	1	24 (610)	26.4 (8.0)
	1/2	5.6	1	31.2 (792)	32.0 (9.7)
	1/2	5.6	1	36 (915)	34.1 (10.4)
	1/2	5.6	2	48 (1220)	46.8 (14.2)
	1/2	5.6	3	60 (1525)	61.4 (18.7)
	1/2	5.6	4	72 (1830)	76.1 (23.2)
	3/4	8.0	1	24 (610)	19.4 (5.9)
	3/4	8.0	1	31.2 (792)	23.4 (7.3)
	3/4	8.0	1	36 (915)	28.4 (8.6)
	3/4	8.0	2	48 (1220)	39.5 (12.0)
	3/4	8.0	3	60 (1525)	54.8 (16.7)
	3/4	8.0	4	72 (1830)	70.1 (21.4)

FM FRICTION LOSS DATA DJ28B / Series Braided Hose with Fittings

FM: Minimum bend radius 9"(230mm), where C=120
Rated Working Pressure 175psi(1205kPa)

Model	NPT in.	k-Factor	Minimum Bend Radius in. (mm)	Number of Bends	Hose Assembly length in. (ft)	Equivalent Length of 1 in. Schedule 40 Pipe, ft (m)
DJ28B	1/2	5.6	9 (230)	1	2.3	22.9 (6.9)
	1/2	5.6	9 (230)	2	3.3	34.6 (10.5)
	1/2	5.6	9 (230)	3	3.9	41.0 (12.5)
	1/2	5.6	9 (230)	4	4.9	50.4 (15.3)
	1/2	5.6	9 (230)	4	5.9	58.5 (17.8)
	3/4	8.0	9 (230)	1	2.3	15.7 (4.8)
	3/4	8.0	9 (230)	2	3.3	26.9 (8.2)
	3/4	8.0	9 (230)	3	3.9	34.8 (10.6)
	3/4	8.0	9 (230)	4	4.9	43.8 (13.5)
	3/4	8.0	9 (230)	4	5.9	53.4 (16.2)

FM FRICTION LOSS DATA DJ32B / Series Braided Hose with Fittings

FM: Minimum bend radius 8"(203mm), where C=120
Rated Working Pressure 175psi(1205kPa)

Model	NPT in.	k-Factor	Minimum Bend Radius in. (mm)	Number of Bends	Hose Assembly length in. (mm)	Equivalent Length of 1 in. Schedule 40 Pipe, ft (m)
DJ32B	1/2	5.6	8 (203)	1	24 (610)	8.8 (2.2)
	1/2	5.6	8 (203)	2	31.2 (792)	14 (4.3)
	1/2	5.6	8 (203)	2	36 (915)	17.5 (5.3)
	1/2	5.6	8 (203)	3	48 (1220)	26.3 (8)
	1/2	5.6	8 (203)	4	60 (1525)	31.4 (9.5)
	1/2	5.6	8 (203)	4	72 (1830)	36.6 (11.1)

LPCB FRICTION LOSS DATA

Pressure loss & equivalent length (clause 4.4.16)
The results of this test are shown in Tables 1 to 5.
Nominal Size / Connection Supply: 1"NPT/PT external thread.
FM: Minimum bend radius 4"(100mm), where C=120

Product Name	Length (mm)	Nominal Size / Connection outlet	Maximum working Pressure (bar)	LPCB Ref. No.
DJ25UB	700	1/2" NPT/PT internal thread 3/4" NPT/PT internal thread	16	1298a/01
	1000	1/2" NPT/PT internal thread 3/4" NPT/PT internal thread	16	1298a/01
	1200	1/2" NPT/PT internal thread 3/4" NPT/PT internal thread	16	1298a/01
	1500	1/2" NPT/PT internal thread 3/4" NPT/PT internal thread	16	1298a/01
	1800	1/2" NPT/PT internal thread 3/4" NPT/PT internal thread	16	1298a/01

UL FRICTION LOSS DATA DJ25B / Series Braided Hose with Fittings

UL: Minimum bend radius 7.5"(190mm), where C=120
Rated Pressure 175psi
Maximum Ambient Temperature, 225°F / Flexibility type is limited.

Model	Nom. Inlet by Outlet Size, in	Assembly Length, ft (mm)	Max No. of 90° Bends	Equivalent Length of 1 in. Schedule 40 Steel Pipe(C=120), ft
DJ25B	1x1/2	2.0(610)	1	12
	1x1/2	4.0(1200-1220)	2	29
	1x1/2	5.0(1500-1525)	3	68
	1x1/2	5.9(1800)	3	94
	1x3/4	2.0(610)	1	21
	1x3/4	4.0(1200-1220)	2	36
	1x3/4	5.0(1500-1525)	3	73
	1x3/4	5.9(1800)	3	99

UL FRICTION LOSS DATA DJ25UB / Series Braided Hose with Fittings

UL: Minimum bend radius 3"(76mm), where C=120
Rated Pressure 175psi
Maximum Ambient Temperature, 225°F / Flexibility type is limited.

Model	Nom. Inlet by Outlet Size, in	Assembly Length, ft (mm)	Max No. of 90° Bends	Equivalent Length of 1 in. Schedule 40 Steel Pipe(C=120), ft
DJ25UB	1x1/2	2.3(700)	2	16
	1x1/2	3.3(1000)	3	34
	1x1/2	3.9(1200)	3	35
	1x1/2	4.9(1500)	3	52
	1x1/2	5.9(1800)	3	84
	1x3/4	2.3(700)	2	22
	1x3/4	3.3(1000)	3	43
	1x3/4	3.9(1200)	3	50
	1x3/4	4.9(1500)	3	59
	1x3/4	5.9(1800)	3	86

UL FRICTION LOSS DATA DJ28B / Series Braided Hose with Fittings

UL: Minimum bend radius 3"(76mm), where C=120
Rated Pressure 200psi
Maximum Ambient Temperature, 225°F / Flexibility type is limited.

Model	Nom. Inlet by Outlet Size, in	Assembly Length, ft (mm)	Max No. of 90° Bends	Equivalent Length of 1 in. Schedule 40 Steel Pipe(C=120), ft
DJ28B	1x1/2	2.3(700)	3	18
	1x1/2	3.3(1000)	5	23
	1x1/2	3.9(1200)	7	29
	1x1/2	4.9(1500)	9	39
	1x1/2	5.9(1800)	12	50
	1x3/4	2.3(700)	3	20
	1x3/4	3.3(1000)	5	24
	1x3/4	3.9(1200)	7	31
	1x3/4	4.9(1500)	9	40
	1x3/4	5.9(1800)	12	70