

BOGO Company Limited PR BROCHURE

FEEL THE MAGIC OF TRADING

The BOGO Way

History

Outline Of Company

Organization

Marine Equipment

Marine Main Engine

Plant Equipment

- Industrial Plant & Boiler
- Industrial Plant Equipment
- Incinerator System

Global Network And Partners



FEEL THE MAGIC OF TRADING

BOGO Co., Ltd. supplies the world's best products to domestic and Abroad such as Marine Equipment & Industrial Component based on the highest service with trust.

With this effort and challenge, BOGO towards as the world's leading company specialized in Trade.

(株)宝庫通商(BOGO)は、国内外、顧客様よりの信頼を受け、長年の経験に基づいたノウハウを蓄積してきました。

造船器機材及びプラント部門関連、最高の品質と最高のサービスにより世界への飛躍を目指し、努力と挑戦精神で、皆様の事業の飛躍繁栄を力強くサポート致します。



THE BOGO WAY

会社運営の指針

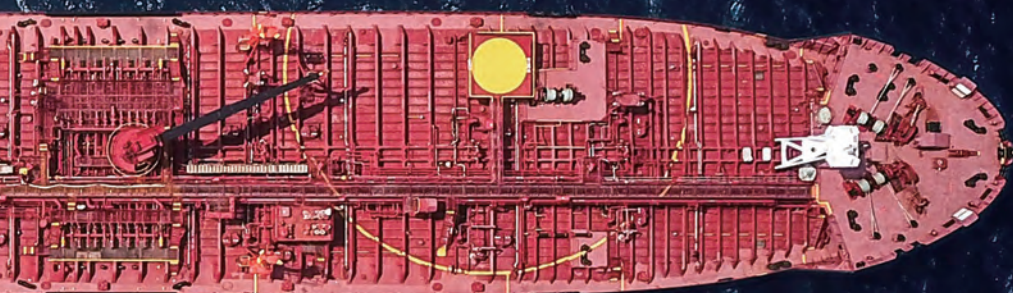
Worldwide company! Bogo Trading Co., Ltd., work along with client's happiness

Bogo Co., Ltd. is an Export Specialized Company established in 2006, which has started with Marine Equipment and Ship Engine Components and is also exporting Environmental and Industrial Plants and various Industrial Machine Components across the border to worldwide leading companies. Since 2009, designated as an Export Specialized Company selected by Ministry of Trade, Industry and Energy and Korea International Trade Association, we are a responsibly company.

We consist of talented members with diverse experience and ability and since establishment, have successfully been leading various shipbuilding and plant construction. Although we have not been established for a long time, we accomplished over \$200 million of export achievement, and gained great trust precious as life, from domestic and foreign customers. We hold our gratitude in mind for all the support and cooperation of our customers.

To convey this sincerity, Bogo puts in customer's happiness top priority in company management. We consider everybody as a lifetime customer and try to take responsibility until the end. At the same time, we respect autonomous mind of employees who we work together and aim to pursue a workplace filled with joy of all employees.

We will be your strong supporter with good knowledge and active attitude by not settling in the present and aiming for better service and strengthening competitiveness. Also, we will do our best to not only generate profits but also give magical impression as our company slogan.



世界の企業! (株)宝庫通商は、お客様の幸せとともに。

(株)宝庫通商は、2006年に設立した専門貿易商社として、造船資機材及び船舶エンジン部品をはじめ、環境及び産業プラントといった多彩な産業機械部品を国境を越え、全世界の有数企業に輸出しております。2009年よりは産業通商資源部及び韓国貿易協会が選定する専門貿易商社認証書を取得している責任感のある企業でございます。

弊社は、多彩な経験と能力を持ち備えた優秀なスタッフで構成され、設立以来、様々な造船及びプラント工事を成功的に導いております。設立間もない新しい会社ですが、2億ドル以上の輸出実績を上げ、国内外のお客様から命よりも大事な大きな信頼を得ることができました。これもひとえにすべてのお客様の支援と協力の賜りものであり、心より感謝を申し上げます。

宝庫通商は、このような真心をお伝えすべく、会社経営においてお客様の幸せを最優先にしております。すべてのお客様を一生のお客様とし、最後まで責任を持てるよう努力しております。同時に宝庫通商は、ともに息を合わせ前に進む職員たちの主体的な考えを尊重し、職員皆の喜びで溢れる仕事を追求しております。

現状にあまえることなく、より一層高いサービスと競争力の強化を目指し、豊富な知識、経験と積極的な行動力で皆様の心強いサポーターとして進んでまいります。また、単純な利益創とどまることなく、スローガンの通り、魔法のような感動を与えられるよう最善を尽くしてまいります。

HISTORY

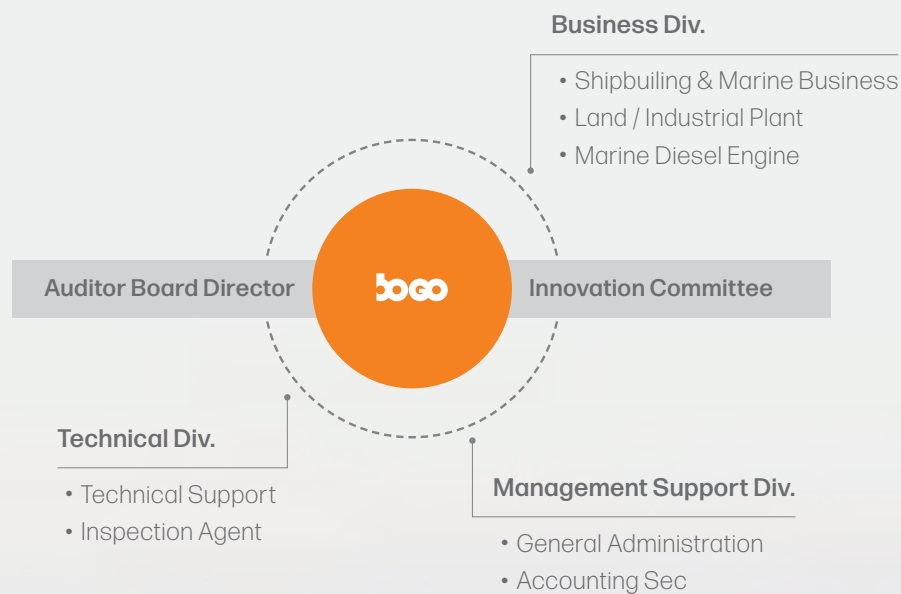
- 2006. 05. 12 Established BOGO CO., LTD.
- 2007. 11. 30 Awarded the Tower for 3 Million Dollar-worth of Exports
- 2008. 12. 01 Awarded the Prize of Korea International Trade Association on Oversea Buyer Invitational (IMEX)
- 2008. 12. 02 Awarded the Tower for 10 Million Dollar-worth of Exports
- 2008. 12. 17 Awarded the Excellence Prize of Busan Export Prize
- 2009. 12. 15 Designated as an Export Specialized Company
- 2011. 11. 30 Awarded the Tower for 20 Million Dollar-worth of Exports
- 2012. 10. 29 Pioneered Japanese Medium and Small Shipyard market with the support from Busan city government.
- 2012. 10. 30 Awarded the Internal Compliance Program Certificate
(Minister of Knowledge Economy, Republic of Korea)
- 2013. 11. 01 Dalian Samgong Co., Ltd. M & A
- 2014. 10. 07 Reselected as an Export Specialized Company due to Legal Amendments
- 2015. 10. 14 Selected as Global Procurement Lead Company
(Korea Trade-Investment Promotion Agency)
- 2016. 02. 24 Awarded the Best Company for Regional Economic Vitalization
- 2016. 12. 20 Awarded the Korea and China FTA 1 Year Anniversary
(Minister of Trade, Industry & Energy)
- 2017. 03. 01 Reselected as Specialized Trading Company
(Minister of Trade, Industry & Energy/ KITA)
- 2018. 04. 12 Reselected as Specialized Trading Company
(Minister of Trade, Industry & Energy/ KITA)



OUTLINE OF COMPANY

- Address : 305, 388 Nakdong-Daero, Saha-Gu, Busan Korea
(306, Rich-W B/D, DangRi-Dong)
- Homepage : www.bogoco.co.kr
- E-Mail : bogo@bogoco.co.kr
- Founded : May. 12, 2006
- Capital : US\$160,000
- President : J. W. Kim
- Major Business :
(Procurement of Materials & Support Service as an Quality Inspection Agency)
 - Trading Equipment for Marine and Land Industrial Plant
 - Trading of Machinery & Spare Parts, Steel Structure
 - Technical Support on Design, Engineering, etc.

ORGANIZATION CHART



Marine Equipment

Trustworthy Company Bogo only supply quality certified products.

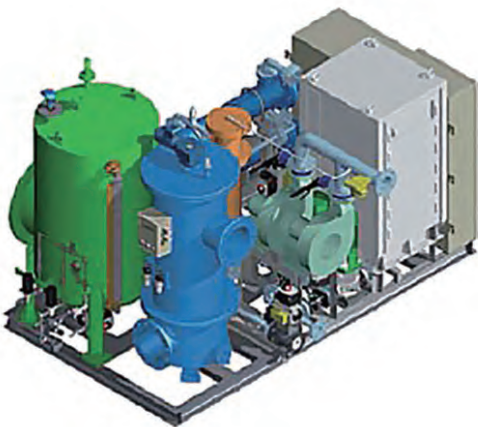




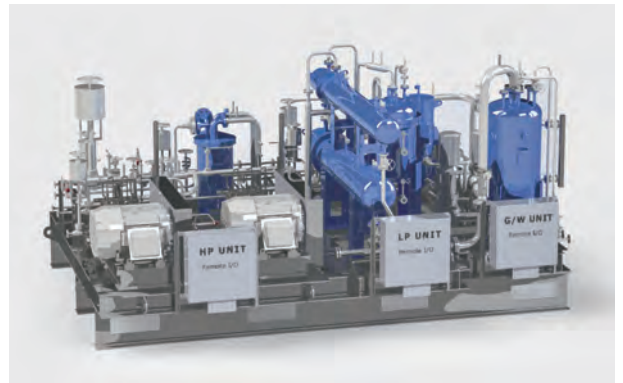
Deck House



Hose Handling Crane



BWTS(Ballast Water Treatment System)



FGSS (Fuel Supply System)



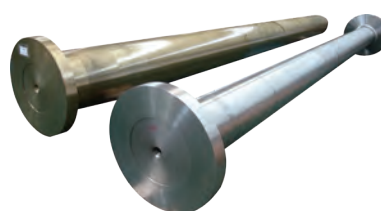
Rudder Horn



Propeller Boss



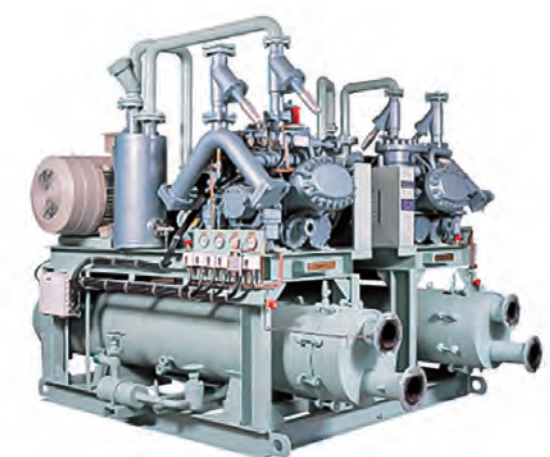
SOx Scrubber



Propeller & Intermediate Shaft



Rudder Stock



Ref. condensing unit



Compressor



Compressor One Skid Type



Window



Cargo comp. fan (Keyhole type)



Engine rm. fan & Damper

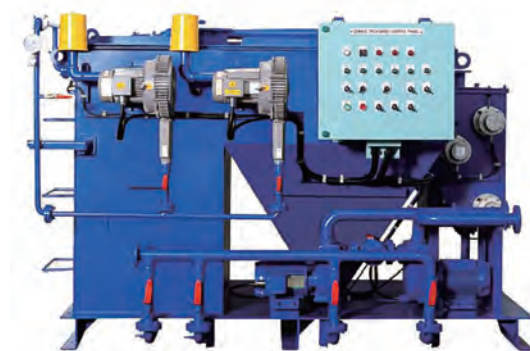


Rocket fan



Pump Room Davit

Sludge Davit



Sewage Treatment Plant M-Bio (ISB SERIES)



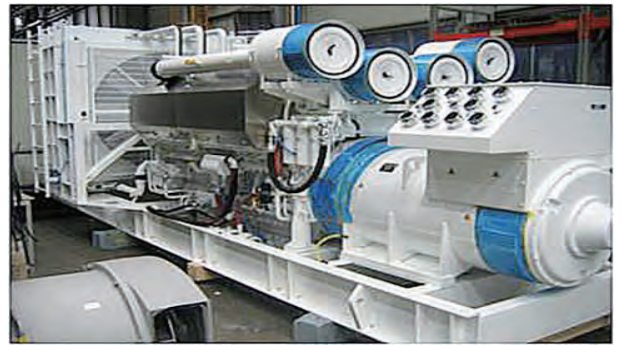
Lashing Bridge



Hatch Cover



Generator Set



Marine Emergency Set



Double Wall Pipe



Vacuum Condenser



Marine Boiler



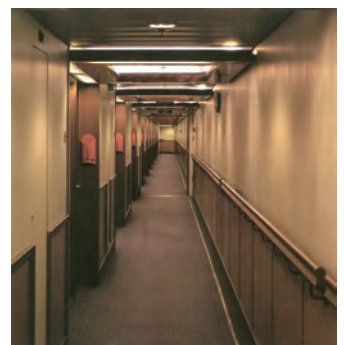
Plate Type Heat Exchanger / Oil Heater



Inert Gas Generator / System



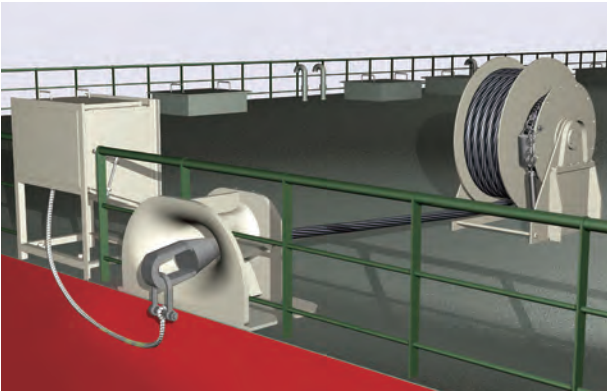
Unit Toilet



Wall Panel



High Velocity P/V Valve



Emergency Towing System



Eductor



Tank Cleaning Machine



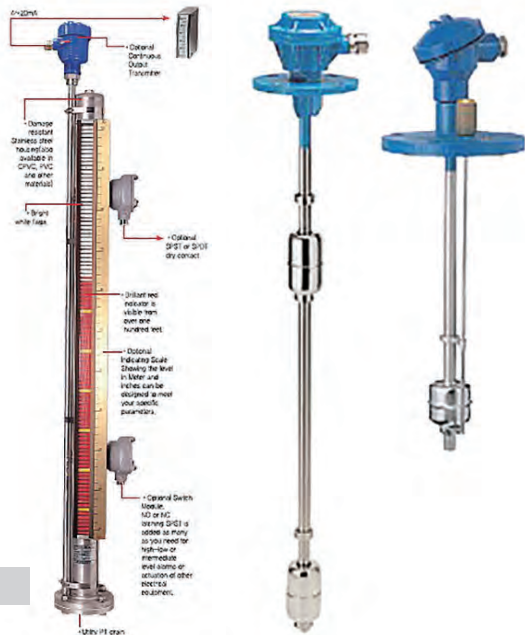
Portable Oil Water Interface Detector



VRCS - Hydraulic Actuator



TLGS





EXLED-125edBu



EXLED-HC



EXLED-HH



A2L-S



A2L-D



EXLED-PF250AL



PS60LLE / PS170LLE



EXLEDm-615



LECO115NFL



CR-54432URO



Anemometer

Lighting Fixture



Public Address System



Communal Aerial System



Auto Telephone System



Sound Powered Telephone

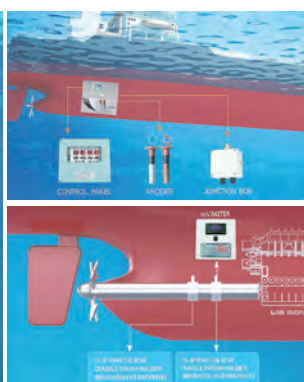
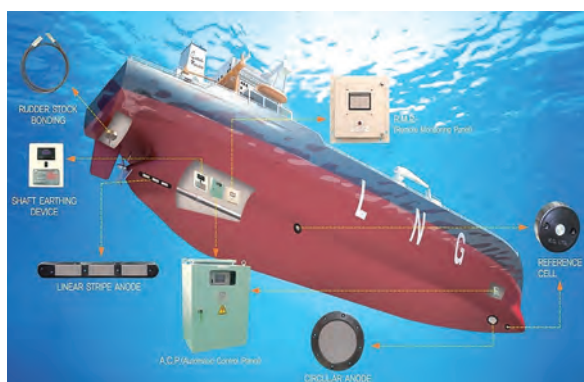


Marine Clock System

Antenna / Auto Telephone / Public Address System



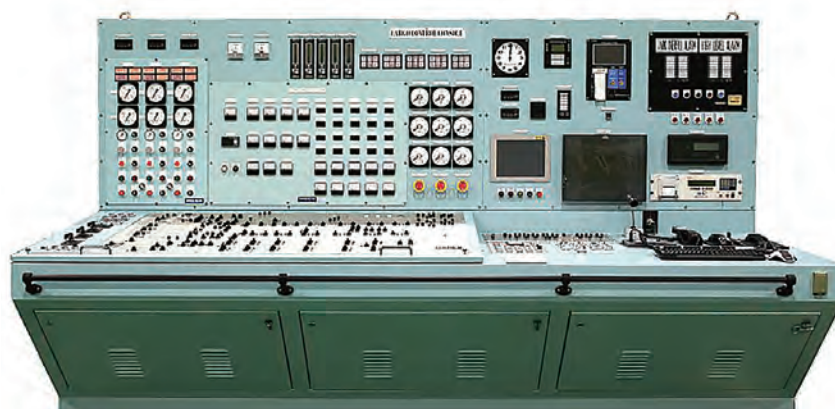
CCTV



MGPS(I.C.C.P. / M.G.P.S. / S.E.D.)



Cast Resin Type Transformer



Control Console



High Pressure Co² System / High Expansion Foam System



Foam Proportioner



Smoke Detection System



Water Mist Fire Fighting System(Nozzle)



Gate Valves



Self Closing Valves



Storm Valves



Swing Check Valves



Emergency Shut-Off Valves



Gate Valve With Locking Device



Globe Valves



Angle Valves



3-Way Valves With Actuator



3Cap Check Valve

Valves(BC, SC, FC)



Resin Chock/ Liner



Oil Strainer



Oil Deflexor

Other Products

- Air Compressor
- Aluminum & Steel Structure
- Anchor & Anchor Chain
- Anchor Winch
- Anode
- Cable Hanger
- Capstan
- Control Panel
- Deck Crane
- Fire Detector
- Fuel Switch
- Galley / Laundry Equipment

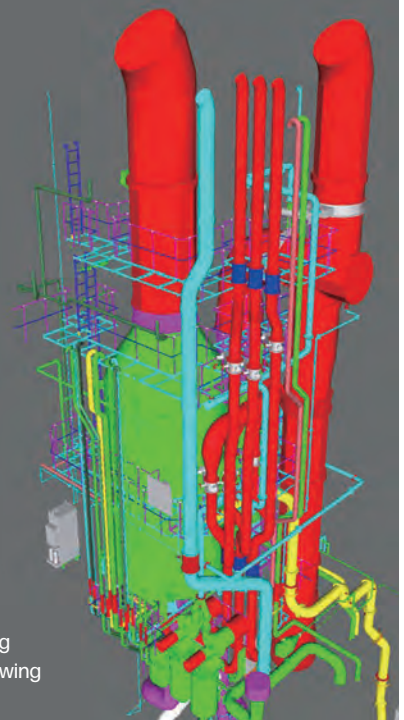
- I.C.C.P System
- Inert Gas System
- Incinerator
- Life / Life Boat Davit
- LNG Storage Tank
- LPG Storage Tank
- Marine Cable
- MGO Cooler
- Mineralizer
- Model Ship
- Monorail Hoist Crane
- Mooring Rope, Hatch
- Mooring Winch



Carolifier

3-D Design Service

- 1) Skid Unit Design (BWTS, EGCS)
- 2) Retrofit Design for Existing Vessel
- 3) Engine Room Modeling Based on Existing Drawing



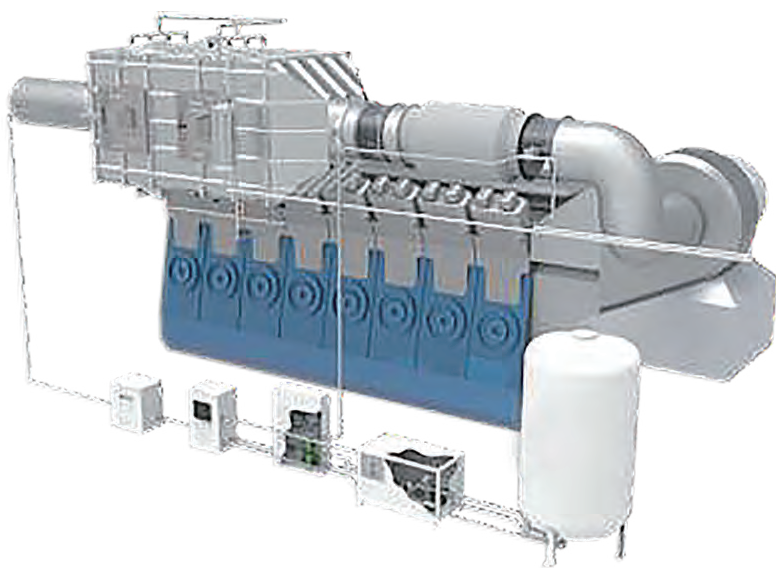
Pipe Arr't & Gas Pipe Arr't

- Motor
- Multi Core Tube
- Oily Bilge Separator
- Pipe Fittings
- Provision Crane
- Refer Cont. Monitoring System
- Rudder & Rudder Trunk
- Shaft Earthing Device
- Ship Block Fab' Membrane Flat
- Ship Fitting Parts
- Ship Hull Parts
- Silencer
- SSAS (Ship Security Alert System)
- Steel Furniture
- Steering Gear
- Sterilizer
- Thruster
- Transformer
- Water Ingress Alarm

Marine main Engine

Trustworthy Company Bogo only supply quality certified products.





SCR System & Catalyst



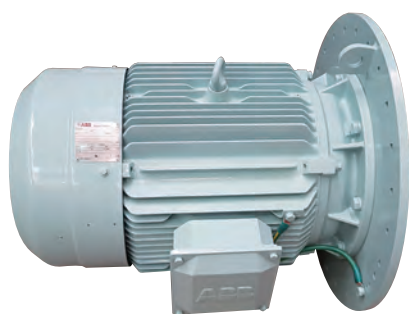
Air Cooler Assembly



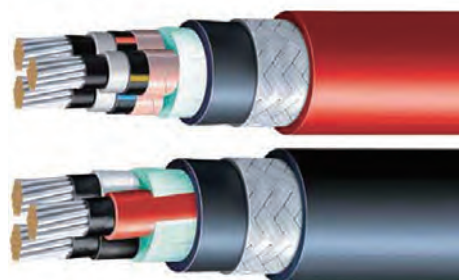
Cylinder Frame



Turning Gear



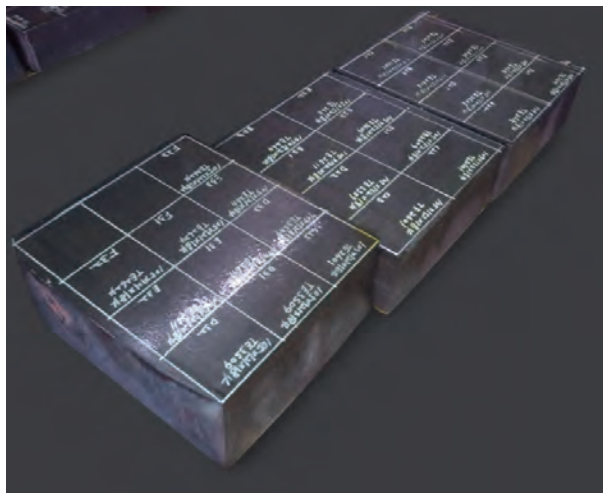
Auxiliary Blower



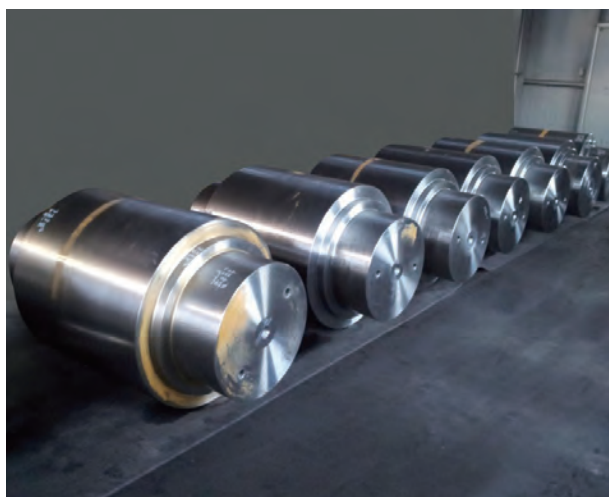
Marine Cable



Piston Crown



Block



Cross Head



Piston Rod



Connecting Rod



Cylinder Cover



Exhaust Valve



Main Starting Valve



Crank Case Relief Valve



Valve Spindle



Valve & Tube Fitting



Hydraulic Pipe

Other Products

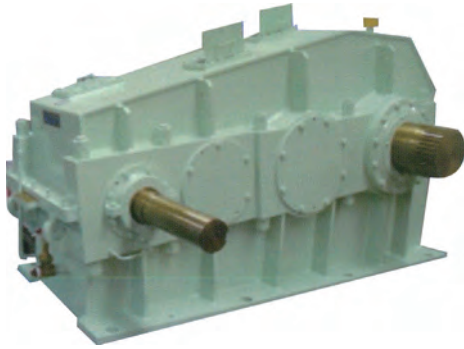
- Bottom Piece
- Cam Shaft
- Chain-Wheel Frame
- Check Valve
- Cylinder Block
- Cylinder Liner
- Exhaust Gas Rece
- Piston Head
- Piston Skirt
- Roller Guide & Liner
- Shock Absorber
- Special Bolt & Nut
- Turning Wheel
- Water Mist Catcher
- Water Separator

Plant Equipment

Trustworthy Company Bogo only supply quality certified products.



Industrial Plant & Boiler



Helical Gear Reducer



Traveling Gear



Deaerator



Surface Condenser



Feedwater Heater (HP)



Feedwater Heater (LP)

Industrial Plant & Boiler



Steam & Water Drum for Boiler



Waste Heat Recovery System



HRSG_Pin Tube



Ejector Vacuum System



Pressure Vessel

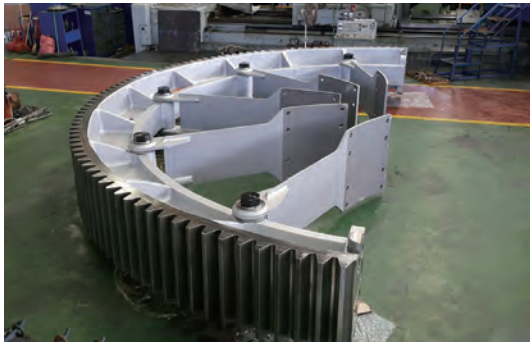


Closed Cooling Water Cooler

Other Products

- Air Cooled Condenser
- Blow Down Tank
- Chemical Dosing Unit
- Conveyor System(Belt, Pipe, Air floating)
- Cool Mill
- Drum for Container Crame
- Duct (Air & Gas)
- End-Platen (Forging)
- Flash Vessel
- Gas / Air Heater
- Heat Exchange (Plate, Sheel & Tube)
- LNG & LPG Tank Equipment
- Piping Spool
- Reactor
- Separator
- Silencer
- Stack & Reclaimer
- Steel Structure
- Stoot Blower
- Tower
- Turn Dish
- Unloader & Shiploader
- Valve Skid
- Water Storage Tank

Industrial Plant & Boiler



Girth Gear & Spring Plate Ass'y



Pinion & Pinion Shaft Ass'y



Girth Gear Cover



Tire Ring



Roller Shaft Ass'y



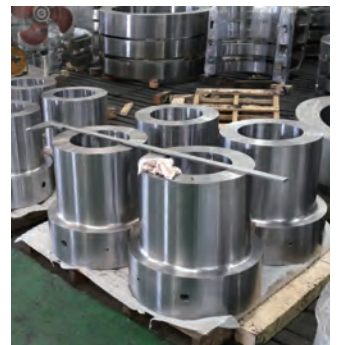
Pinion Bed for Rotary Kiln



Tie Rod



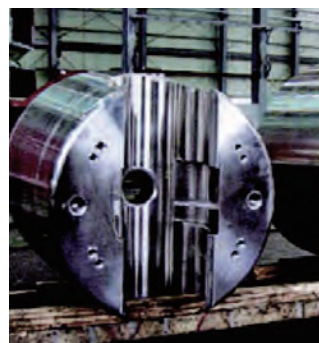
Main Cylinder



Column Nut



Duct Collector of Bag Filter



Coupling



Hook

Industrial Plant Equipment



Butterfly Valve



Ball Valve



Forged Valve



3way Damper



Pipe Fitting



High Tension Bolt



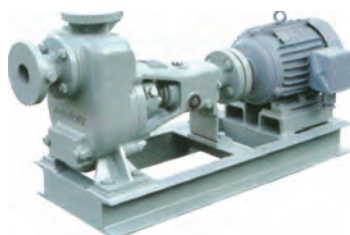
Gear Box



Expansion Joints



Cooling Water System

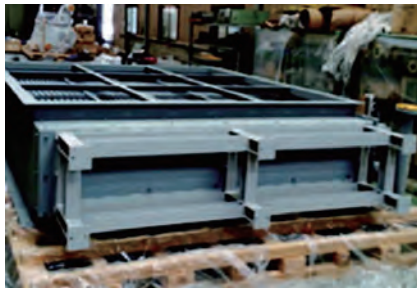
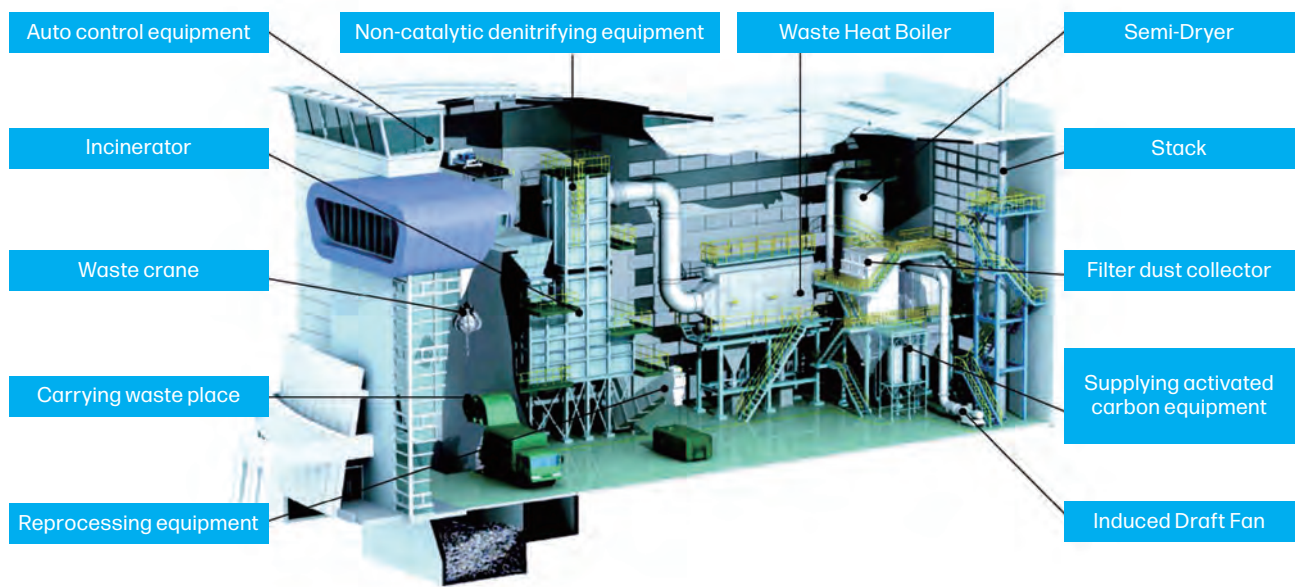


Pump & Motor



Pipe Hanger

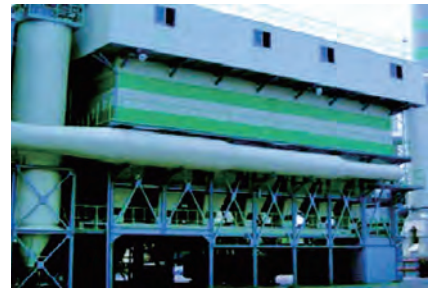
Incinerator System



Steam Air Heater



Reprocessing Equipment



Bag Filter



Rotary Kiln



Waste Heat Boiler



Wet Scrubber

Other Products

Ash Extract & Conveyor Unit
Chemical Dosing Unit

Dry type temp. Reduction Tower
Economizer
Fire Grate / Liner

Super Heater
Stocker
Accumulator

Global Network And Partners

JAPAN

- AKASAKA DIESELS LTD.
- DIESEL UNITED, LTD.
- FUSO KOGYO CO.,LTD
- FUJI ELECTRIC CO.,LTD
- FUKUOKA SHIPBUILDING CO., LTD.
- HAKODATE DOCK CO., LTD
- HEMMI IRON WORKS CO., LTD
- HITACHI ZOSEN CORPORATION
- IMABARI SHIPBUILDING CO., LTD
- IMEX CO., LTD
- IMC CO., LTD
- JAPAN MARINE UNITED CORPORATION
- JFE ENGINEERING CORPORATION
- JFE STEEL CORPORATION
- JP STEEL PLANTECH CO.
- KAWASAKI HEAVY INDUSTRIES. LTD
- KOEI SANGYO CO.,LTD
- KOIZUMI CO.,LTD
- KUBOTA CORPORATION
- KUMAMOTO DOCK CO., LTD
- KYOKUYO SHIPYARD CORPORATION
- MAKITA CORPORATION
- MARINEART COMMUNICATIONS CO., LTD
- MEIWA SANGYO CO., LTD
- MES E&S MACHINERY
- MITSUI ENGINEERING & SHIPBUILDING CO., LTD
- MURAKAMI IRON WORKS CO., LTD
- NAIKAI ZOSEN CORPORATION
- NAMURA SHIPBUILDING CO., LTD
- NHI CO., LTD
- NIHON HI-HEAT ENGINEERING LTD.
- SANOYAS HISHINO MEISHO CORPORATION
- SASEBO HEAVY IND.CO.,LTD
- SEKIGAHARA SEISAKUSHO LTD
- SHIKOKU DOCKYARD CO., LTD.
- SHINKO IND., LTD
- SHITANOE SHIPBUILDING CO., LTD
- SUMITOMO HEAVY INDUSTRIES MARINE & ENGINEERING CO., LTD
- TEIKOKU MACHINERY WORK, LTD
- THE HANSHIN DIESEL WORKS, LTD.
- TSUNEISHI SHIPBUILDING CO., LTD
- UBE MACHINERY CORPORATION, LTD
- UBE STEEL ENG CO., LTD
- U-MHI PLATECH CO., LTD.
- USUKI SHIPYARD CO., LTD

CHINA

- CHINA SHIPBUILDING CORPORATION
- COSCO(NANTONG)SHIPYARD CO., LTD
- DALIAN MARINE DIESEL WORKS
- DAODA HEAVY INDUSTRY GROUP CO., LTD
- DALIAN SHIPBUILDING INDUSTRY CO., LTD
- GUANGZHOU SHIPYARD INTERNATIONAL COMPANY LIMITED
- HONG KONG HARVEST TRADING CO., LTD
- HUDONGZHONGHUA SHIPBUILDING CO., LTD
- JIANGSU RONGSHENG HEAVY INDUSTRIES CO., LTD
- NANTONG COSCO KHI SHIP ENGINEERING CO., LTD
- NANTONG HAMO SHIP EQUIPMENT CO.,LTD
- NANTONG MINGDE HEAVY INDUSTRY
- NEW FUTURE ENGINEERING CO., LTD
- SHANGHAI JIANGNAN SHIPYARD
- SHANHAIGUAN SHIPYARD CO., LTD
- SHANGHAI WAIGAOQIAO SHIPBUILDING CO., LTD
- ZHEJIANG SHIPBUILDING CO., LTD
- ZHEJIANG ZHENGHE SHIPBUILDING CO., LTD

KOREA

- HANJIN HEAVY INDUSTRIES & CONSTRUCTION
- HYUNDAI HEAVY INDUSTRIES CO.,LTD
- LHE CO., LTD

EUROPE

- TECHNICAL MARINE SERVICE (TMS)

INDONESIA

- PT.GAMAKO EKAKARSA
- PT.JFE ENGINEERING INDONESIA
- PT.JFE SHOJI TRADE INDONESIA





MAIN BUSINESS FIELD

Marine Equipment

- Machinery & Out Fitting Parts
- Hull Out Fitting, Accommodation Part
- Electric Part
- Ballast Water Treatment System
- Fuel Gas Supply System
- Stock Part

Component Marine Main Engine

- MAN-B&W
- WARTSLA
- PIELSTICK
- SCR (LP Type)

Plant Equipment

- Environment Systems
- Steel Manufacturing Facility
- Industrial Plant & Boiler
- Piping Spool Equipment
- Casting and Forging Parts

Technical Support on Design, Engineering, etc.



FEEL THE MAGIC OF TRADING

BOGO CO.,LTD

- Address : 305, 388 Nakdong-Daero, Saha-Gu, Busan Korea
(306, Rich-W B/D, DangRi-Dong)
- Homepage : www.bogoco.co.kr
- E-Mail : bogo@bogoco.co.kr

