

OCEAN ENTEC Co., Ltd.

COMPANY PROFILE



GREETING



OCEAN ENTEC Co.,Ltd. was established on 19th February 2004, specializing in exporting and importing Ships Engine Parts for Japan, Far East Asia and Europe.

Through work experiences with several Korean Engine Makers and Industrial Plants, we have been expanding our technical knowledge allowing ourselves to provide better service to our prestigious customers.

We, as one of the world's foremost trading company in this field, are dealing with various kinds of Engine components and Industrial components.

We would be delighted to receive your inquiries so that we can show you our competitiveness and ability to supply the orders in time.

We look forward to providing you with high quality service you deserve.

**Best regards,
Hae-hwa Song / C.E.O**

HISTORY



- 2004. 02. Established OCEAN ENTEC.
- 2008. 11. Awarded One Million Dollar Export
by KITA (Korean International Trade Association).
- 2009. 12. Selected as an Export Specialized Company
by Ministry of Knowledge and Economy.
- 2011. 06. Selected as a 'Promising Export SME'
by the Small and Medium Business Administration.

HISTORY



2011. 11. Sales achieved Two Million Dollar above.

Relocated office in Centum City, Busan.

2012. 07. Designated object company as
'Reinforcement of the Export Capability'
by the Small and Medium Business Administration.

2014. 01. Changed into
"OCEAN ENTEC Co., Ltd." .

HISTORY



- 2016. 06. Selected as a 'Promising Export Firm'
by the Small and Medium Business Administration.
- 2016. 12. Selected as an Certified Trading Company
by KITA (Korean International Trade Association).
- 2018. 12. Reselected as a 'Promising Export Firm'
by the Small and Medium Business Administration.
- 2019. 11. Awarded Three Million Dollar Export
by KITA (Korean International Trade Association).

CORE COMPETITIVENESS

OET (株)오션엔텍
OCEAN ENTEC Co., Ltd.

OCEAN ENTEC Co., Ltd.

Needs

Speed

Accuracy

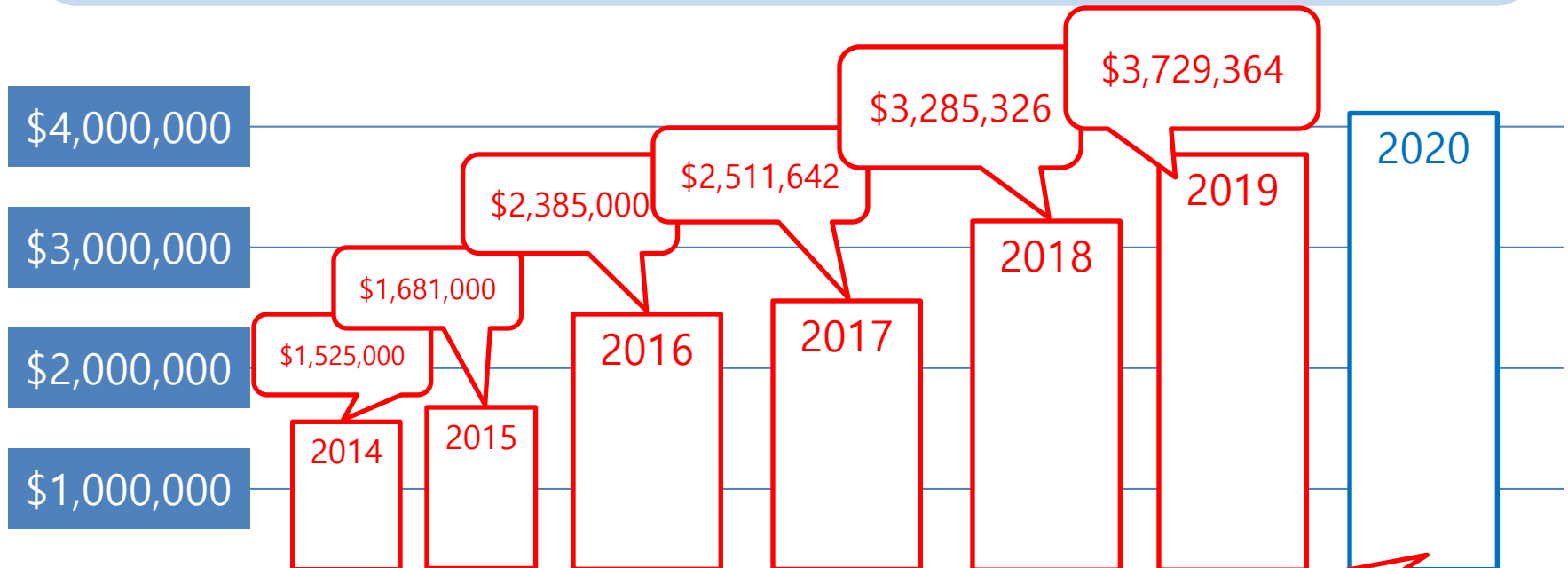
Trust

Customer
Satisfaction

- Exclusive and easily controlled equipments by skilled employees are created that enable a perfect response to customer needs.
- A strict program of Standardization and Quality Controls ensure us to stay at the head of this field with finest quality.

ANNUAL SALE TREND

OET (株)오션엔텍
OCEAN ENTEC Co., Ltd.



We do our best for our goal and we believe it comes true.
2020 Expectation – more than \$4,000,000

BUSINESS AREA



- ◎ Filtration and Valve System
- ◎ Hydraulic Jack for MAN B&W Type Main Engine
- ◎ Import and Export Engine Component Parts for Vessel
- ◎ Die Casting Mold Parts for an Automobile
- ◎ The Other Parts for an Automobile
- ◎ Consulting Service

MAJOR PRODUCTS

OET (株)오션엔텍
OCEAN ENTEC Co., Ltd.

◎ MARINE ENGINE PARTS

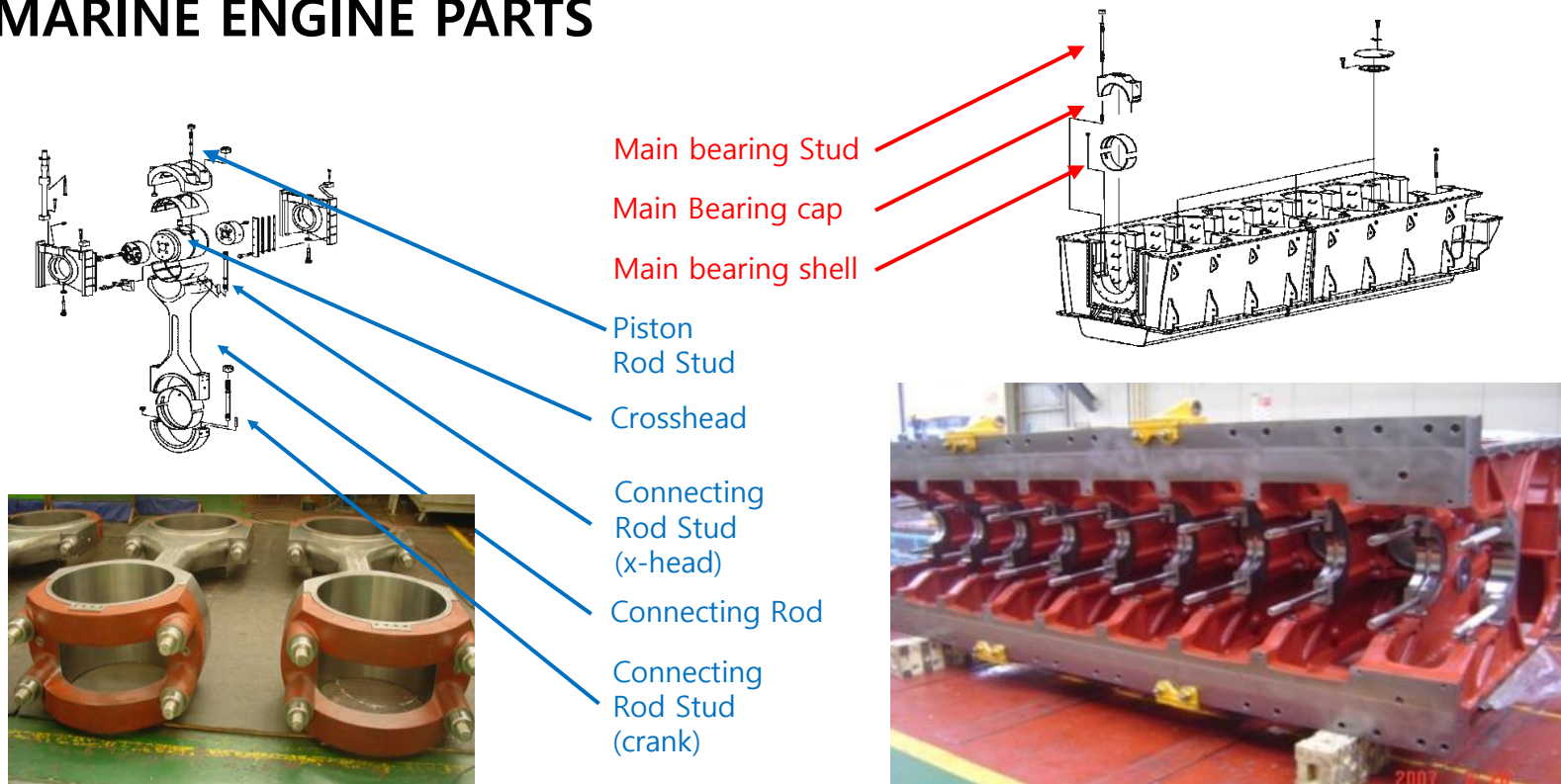
- ① Receiver/Turbocharger Parts Used
Materials : Ni80A, SUH660, SNB16, SUS316, SUS304, Nitrated Bolt
- ② Exhaust Valve Parts
Stud/Hy'd nut for exhaust valve
Used Materials : SNCM439, SCM435
- ③ Cylinder Cover Parts
Stud/Hy'd nut for cylinder cover
Used Materials : SNCM439, SCM435.
- ④ Connecting-Rod Parts
Stud/Hy'd nut for connecting rod to bearing cap(crankpin-crosshead)
Used Materials : SNCM439, SCM435
- ⑤ Main Bearing Parts
Stud/Hy'd nut for crank shaft to main bearing cap
Used Materials : SNCM 439, SCM 435
- ⑥ Special Bolt, Nut, Plate, Plug, Pin, and etc
Used Materials : SNCM, SCM, S45C



MAJOR PRODUCTS

OET (株)오션엔텍
OCEAN ENTEC Co., Ltd.

◎ MARINE ENGINE PARTS



MAJOR PRODUCTS

OET (株)오션엔텍
OCEAN ENTEC Co., Ltd.

◎ MARINE ENGINE PARTS

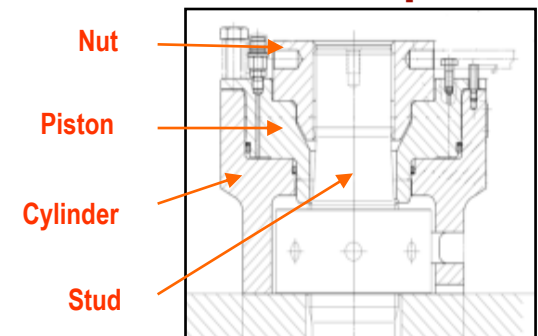
HYDRAULIC JACK ASS'Y



Hyd.Test



Concept



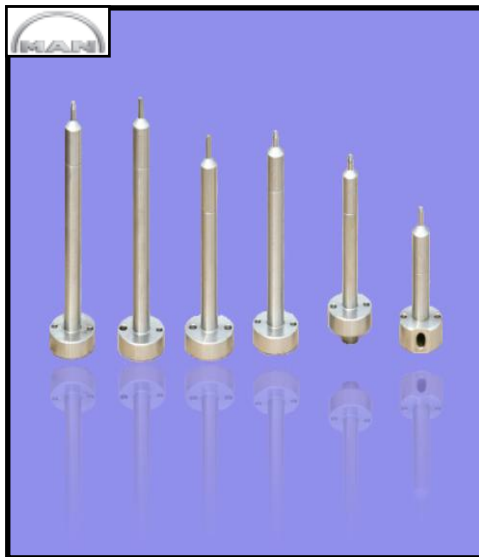
MAN ENGINE PART Work Pressure	Wärtsilä ENGINE PART Work Pressure
MC TYPE=> 900 bar	RTA/RTF => 900 bar
MC-C TYPE=> 1500 bar	
ME-C TYPE=> 2200 bar	

MAJOR PRODUCTS

OET (株)오션엔텍
OCEAN ENTEC Co., Ltd.

◎ MARINE ENGINE PARTS

NON-RETURN VALVE ASS'Y



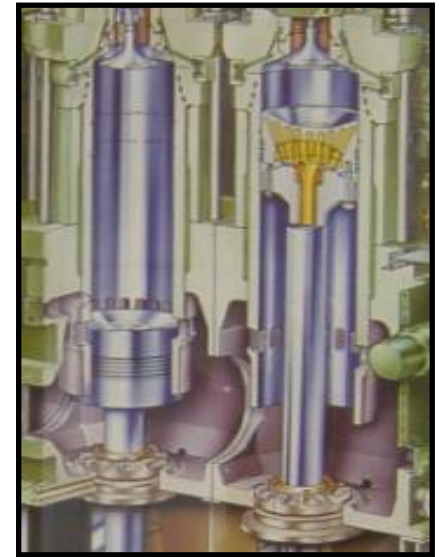
Working TEST



MBD
ENGINE
PART

TEST =>
7BAR

Concept



MAJOR PRODUCTS

OET (株)오션엔텍
OCEAN ENTEC Co., Ltd.

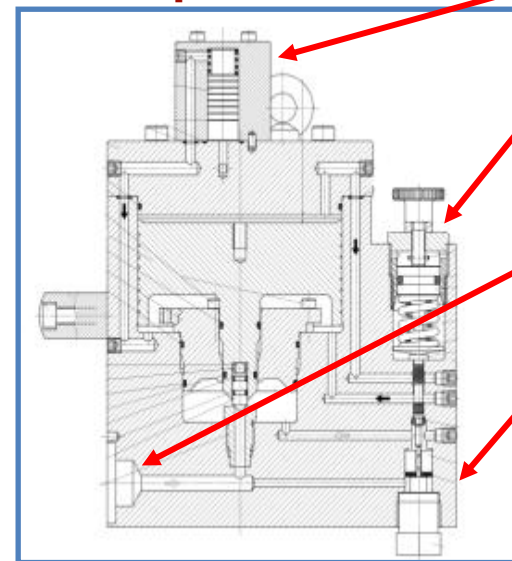
◎ MARINE ENGINE PARTS

PRESSURE CONTROL VALVE ASS'Y



Apply for a patent
-Pressure Control Valve **Control Valve** (Number 10-0768874)

Concept



Control Oil
Accumulator

Regulating
Part

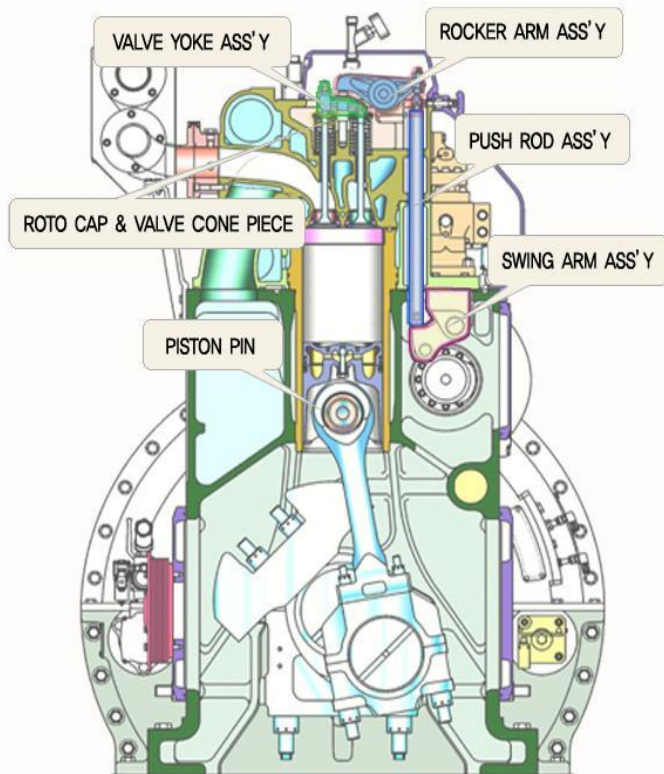
Fuel Inlet
(over 1050 BAR)

Fuel
Outlet

MAJOR PRODUCTS

OET (株)오션엔텍
OCEAN ENTEC Co., Ltd.

◎ MARINE ENGINE PARTS



SUPPLY TYPE

1)MAN TYPE

L16/24, L21/31, L23/30(H),
L28/32, L27/38, L32/40,
V32/40, L48/60

2)HIMSEN TYPE

H17/28, H21/32, H25/33,
H32/40V, H35/40G, H46/60

3)SCOPE

Cylinder bore : 160mm ~ 500 mm

Piston stroke : 240mm ~ 500 mm

MAJOR PRODUCTS

OET (株)오션엔텍
OCEAN ENTEC Co., Ltd.



[ROKER ARM ASS' Y]



[ROKER ARM ASS' Y]



[SWING ARM ASS' Y]



[VALVE YOKE ASS' Y]



[PISTON PIN]



[IN/OUTLET ROKER LEVER]

MAJOR PRODUCTS

OET (株)오션엔텍
OCEAN ENTEC Co., Ltd.



[HOUSING FOR ROLLER GUIDE]



[VALVE CONE PIECE]



[ROTO CAP]



[PUSH ROD ASS' Y]



[VALVE GUIDE]



[ROLLER]

MAJOR PRODUCTS

OET (株)오션엔텍
OCEAN ENTEC Co., Ltd.



[CRANK PIN
BEARING CAP]



[MAIN BEARING CAP]



[SHAFT SWING ARM]

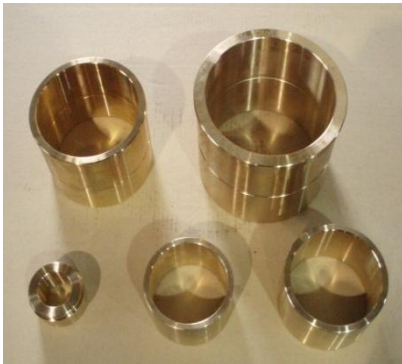


[MAIN BEARING CAP]

MAJOR PRODUCTS

OET (株)오션엔텍
OCEAN ENTEC Co., Ltd.

© Shipbuilding parts of Engine, Pump, winch, Etc.



MAJOR PRODUCTS

OET (株)오션엔텍
OCEAN ENTEC Co., Ltd.

◎ Machine tool manufacture: Hydraulics Motor and pump part.
(Cu Alloys and Al Alloys)



MAJOR PRODUCTS

OET (株)오션엔텍
OCEAN ENTEC Co., Ltd.

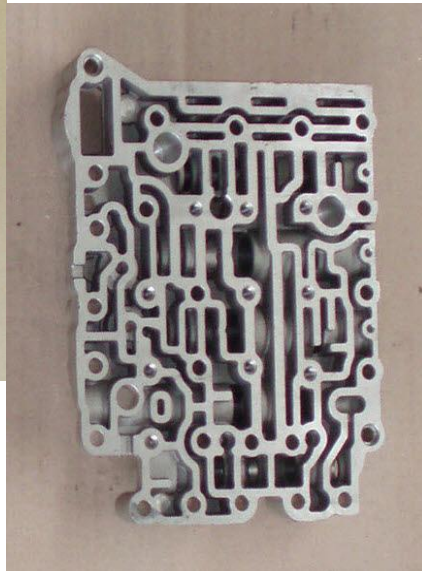
◎ Parts of gear reducer



MAJOR PRODUCTS

OET (株)오션엔텍
OCEAN ENTEC Co., Ltd.

© Automotive parts



MAJOR PRODUCTS

OET (株)오션엔텍
OCEAN ENTEC Co., Ltd.

◎ Parts of pneumatic and hydraulic machine



MAJOR PRODUCTS

OET (株)오션엔텍
OCEAN ENTEC Co., Ltd.

◎ Mg Casting –Gravity sand casting



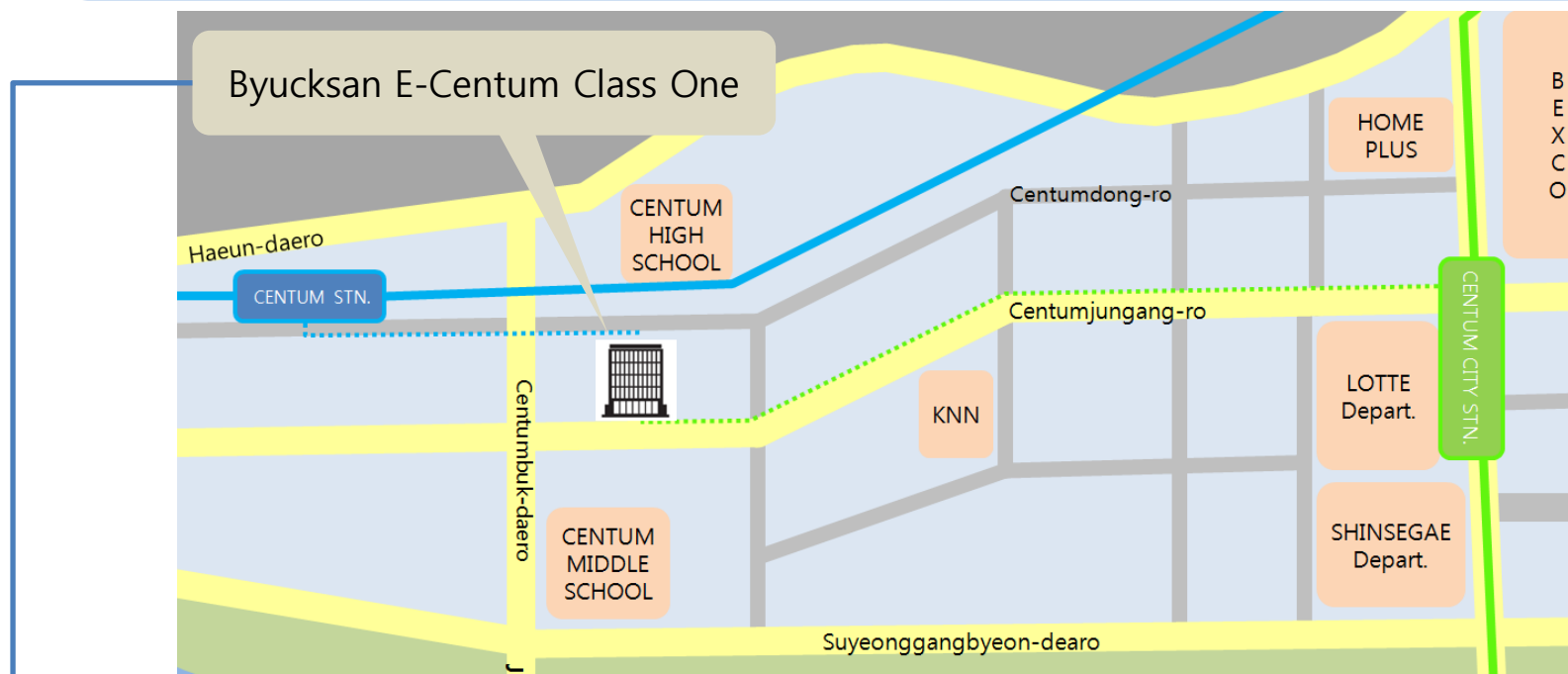
MAJOR CUSTOMERS



J A P A N	IHI Marine Co., Ltd.	E U R O P E	ASTANDER (Spain)
	Mitsui E&S Machinery Co., Ltd.		ASTICAN (Spain)
	Miyahara Co., Ltd.		European Diesel Service Ltd. (U.K.)
	Nagao Machinery Works Co., Ltd.		IMBV b.v. (Netherlands)
	Sojitz Marine & Engineering Corporation	EAST ASIA	Tru-marine Pte Ltd. (Singapore)
	Suzuki Menko Co., Ltd.		

OUTLINE

OET (株)오션엔텍
OCEAN ENTEC Co., Ltd.



OCAEN ENTEC Co., Ltd.

Location	No.802, 99, Centum dong-ro, Haeundae-gu, Busan, Republic of Korea (48059)		
Office	+82-51-862-3939	Fax	+82-51-861-1226
E-mail	oet@oceanentec.com / song@oceanentec.com		



THANK YOU for watching.