



**CQMONG**  
Qualification of the Skin



**Dream of becoming  
the Charming Queen of Skin**

CQ stands for "Charming Queen" and  
MONG is "the mong [mɔŋ] pronunciation of Chinese Character ( 夢 )"



**CQMONG Diamond Ampoule Mask**

1box (10 pcs) / Unisex



CQMONG Diamond Ampoule Mask  
was selected as the **2019 SEOUL AWARDS**  
for its potential to grow into a superior product  
through a very strict screening.

## 2019 Hi Seoul Awards

**Hi  
seoul**  
**2019  
Awards**

### Certificate of Designation

We hereby certify that  
the this product has been given  
a '2019 Seoul Award' in recognition  
of its growth potential as an excellent  
product on the basis of outstanding ideas.

Seoul Business Agency



CQMONG Diamond Ampoule Mask  
No. 201911\_596

1

## A total of 65 effective ingredients in one sheet (30g)

- 2-3 times more than any other mask pack!  
**Multiple effects with one pack!**
- Effect up! when layering the essence left before and after use evenly on the neck, face, and hand, etc.
- Anti-wrinkle, Elastic Skin, Brilliance, Clear Skin, Nutrition, Moisture, Skin Soothing, Skin Tone Improvement
- Specially, the **Diamond Powder** helps the skin look luminous, glossy.



Rich Essence Capacity (30g)

## 2

Not much sticky, refreshing feeling is good!

- Directly Makeup available without washing face after using it.  
(Makeup goes well.)
- Base-makeup doesn't get pushed.
- Moisture, elasticity and brilliance last for a long time.



The skin is hydrated enough to be seen by the eyes.



### 3

## Soft natural CUPRA sheet / Safe use of sensitive skin

- A feeling of wearing of smooth sheet is good.
- Sheet Design that covers the entire eye & the bottom of the eye.
- Natural pure cotton Cupra Sheet ( Soft & Smooth fiber tissue )
- Exclusion of animal, harmful ingredients  
(Paraben, Benzophenone, Triethanolamine, etc.)  
--> all not included. " 1 pack a day safely, OK "



No need to attach additional Eye Patch.

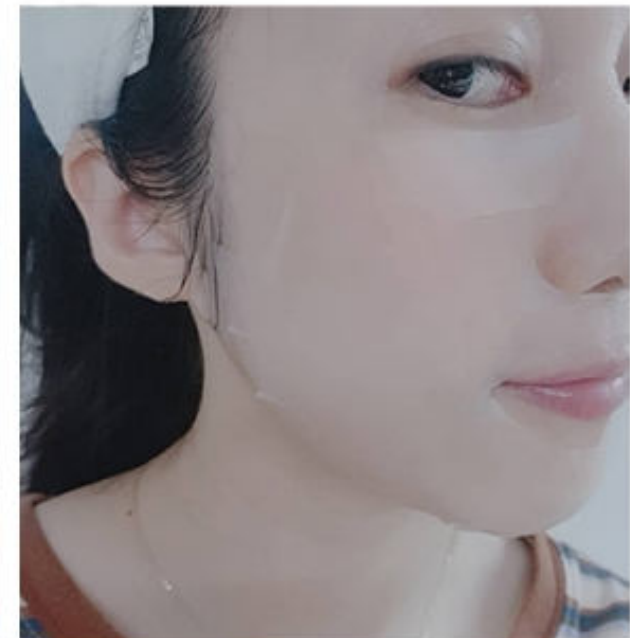
# Beautiful skin, you can have it, too!

Fill your skin which is tired with fine dust & ultraviolet light with full moisture and nutrition.

If your habits change, your skin changes.  
Take care of your skin every day from now on.



*Qualification of the Skin, CQMONG. That is why they picked on it.*



## “ INGREDIENTS & EFFECT ”



Diamond Powder "20 ppm"

Luminous skin texture



Adenosine

Anti-aging



Hyaluronic Acid

Moisturizing / Elasticity / Vitality



Collagen

Moist Skin / Promoting Cell Metabolism



Peptide

AcetylHexapeptide-8  
CopperTripeptide-1

Collagen Synthesis Enhancement / Nutrition Supply



Plants · Grains & The others

Skin Tone Improvement / Skin Soothing



## The origin of use & the effect of Diamond Powder

---

It is a symbol of Love, Purity, Faith.  
It was also the secret to the bright skin care of  
the ancient Indian Mungal-era queens.



Contains Diamond Powder 20 ppm

The diamond powder fills the pores and the gap  
between wrinkles, giving the skin a clear, glossy texture.

# Deliver 65 effective ingredients to the skin depth

## CQMONG Diamond Ampoule Mask

**A total of 65 effective ingredients**

**01**

Ampoule concentrate supply  
(Adenosine / Hyaluronic acid/  
Collagen / Peptide, etc.)  
Diamond Powder  
Extracts of Plants · Grains, The others

**02**

**Rich Essence  
Capacity (30g)**

Not much sticky  
Persistence of Moisture & Brilliance  
Directly Makeup available  
without washing face after use  
Base makeup doesn't get pushed

**Natural pure cotton  
Cupra Sheet**

**03**

Soft fiber tissue  
Thin, Transparent  
High Tactile & Adhesive Touch

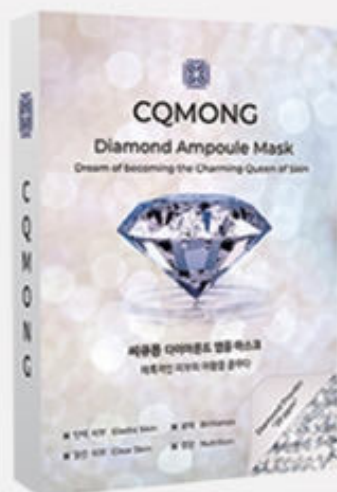
**04**

**Safe use of  
sensitive skin**

Strict exclusion of animal, harmful ingredients  
TManufactured in  
ISO International Certification Acquisition Factory!



## PRODUCT DETAILS



Product Name

CQMONG Diamond Ampoule Mask

Capacity

30g (1 pack)

Contents

1box / 10 packs

A manufacturer & dealer

MK Global +82-2-792-3988  
[www.cqmong.com](http://www.cqmong.com)

Manufacturing Country

made in Korea



# INGREDIENTS & EFFECT

Water, Glycerin, Methylpropanediol, 1,2-Hexanediol, Hydroxyacetophenone, Allantoin, Butylene Glycol, Carbomer, Arginine, Niacinamide, Panthenol, PEG-60 Hydrogenated Castor Oil, Adenosine, Xanthan Gum, Honey Extract, Disodium EDTA, Phenoxyethanol, Xylitylglucoside, Anhydroxylitol, Glycyrrhiza Glabra (Licorice) Root Extract, Camellia Sinensis Leaf Extract, Hydrolyzed Collagen, Ginkgo Biloba Nut Extract, Angelica Gigas Root Extract, Paeonia Lactiflora Bark/Sap Extract, Zizyphus Jujuba Fruit Extract, Panax Ginseng Root Extract, Laminaria Japonica Extract, Punica Granatum Fruit Extract, Artemisia Vulgaris Extract, Yeast Extract, Diamond Powder (20ppm), Xylitol, Sodium Hyaluronate, Persea Gratissima (Avocado) Oil, Olea Europaea (Olive) Fruit Oil, Glucose, Ethylhexylglycerin, Citrus Aurantium Dulcis (Orange) Flower Extract, Sambucus Nigra Flower Extract, Lilium Tigrinum Extract, Plumeria Rubra Flower Extract, Magnolia Liliflora Flower Extract, Chrysanthellum Indicum Extract, Melissa Officinalis Leaf Extract, Euterpe Oleracea Fruit Extract, Ribes Nigrum (Black Currant) Fruit Extract, Rubus Idaeus (Raspberry) Fruit Extract, Rubus Fruticosus (Blackberry) Fruit Extract, Vaccinium Myrtillus Fruit Extract, Vaccinium Macrocarpon (Cranberry) Fruit Extract, Vaccinium Angustifolium (Blueberry) Fruit Extract, Nelumbo Nucifera Flower Extract, Coix Lacryma-jobi Ma-yuen Seed Extract, Paeonia Lactiflora Root Extract, Houlttuynia Cordata Extract, Prunus Armeniaca (Apricot) Kernel Extract, Prunus Mume Fruit Extract, Prunus Persica (Peach) Kernel Extract, Rosmarinus Officinalis (Rosemary) Leaf Extract, Aspalathus Linearis Leaf Extract, Thymus Vulgaris (Thyme) Flower/Leaf Extract, Jasminum Officinale (Jasmine) Flower Water, Copper Tripeptide-1, Acetyl Hexapeptide-8



# CERTIFICATION

## Manufactured at ISO certified factory

Quality and environmental management system certification

Qualified cosmetics production company



# HOW TO USE



**STEP1** Wash off fine dust & some dead skin with a cleanser.

**STEP2** After washing face, apply sheet mask on face.

Pull the eye part of sheet up to just below the eyes,  
that part will be fully covered. (No need to attach additional Eye Patch)

**STEP3** Attach the mask pack for about 10 ~ 20 minutes.

**STEP4** Slowly remove mask pack.

**STEP5** Apply the remaining essence of the removed sheet to face more  
and tap face lightly until fully absorbed.

**STEP6** Very little Sticky, Persistence of Moisture, Brilliance

Directly putting on Make-up without washing right after using pack.

## PRECAUTIONS FOR USE

1. When using cosmetics or after use, consult with a specialist if there is any abnormal symptom or side effectssuch as red spot, swelling or itching by the direct sunlight
2. Don' t use in areas with scratches.
3. Precautions for storage and handling.
  - ① Keep out of the reach of children
  - ② Store away from direct sunlight
  - ③ Use the essence so that it doesn't fall into your eyes

If there is something wrong with this product, we will compensate you according to the Fair Trade Commission Notice of Consumer Dispute Resolution Standards.