



COMPANY & PRODUCTS GUIDE

English

# AMAROS



• Medical

• Cosmetic

• Cosmeceutical

• Professional



# Company Introduction & History

## AMAROS

### Introduction

Amaros Co., Ltd. has been researching and manufacturing beauty equipment, functional cosmetics, pharmaceutical drugs (skin, obesity, and scalp) and etc. over 180 items. Amaros Co., Ltd. has a well-established history of continuous challenging and developing excellent, highest quality products suitable for Global Wellbeing Trend. We promise you to bring the best products which you can trust and will continue to put our utmost effort into developing and producing our reliable quality products under Amaros Core Values: Collaboration, Research and Commitment. We exports our products to 60 countries!

### History

- |  |   |   |   |
|--|---|---|---|
| <p>2004 Registered for 187 types of products<br/>Certified Trademark Right of "AMAROS" Brand &amp; Service Right,<br/>Certified Incorporation of SJ Co., Ltd. with "AMAROS" Brand<br/>Opened AMAROS-Basic Beauty Salon, 'Hadaewon Branch'<br/>(Direct management by SJ)<br/>Released SJ 'Soap' for Atopy &amp; Athlete's Foot</p> <p>2005 Opened AMAROS-Basic Beauty Salon, 'Seongnam-City Hall<br/>Branch' And 'Seongnam Yatap Branch'<br/>Launched improved 'AMAROS Arbutin Whitening Serum'<br/>(Certified by Korea Food &amp; Drug Administration: KFDA)</p> <p>2006 Opened AMAROS-Classic Beauty Salon, 'Grand<br/>Intercontinental Hotel Branch'<br/>Established AMAROS Co., Ltd. in Chingdao, China<br/>Opened AMAROS Beauty Salon, 'Chingdao Branch', China<br/>Applied Patent for Portable Eyebrows Activator (Utility Model)<br/>Opened AMAROS-Classic Beauty Salon, 'Bundang Jeongja Branch'</p> <p>2007 Opened AMAROS Beauty Salon, 'Suwon-city Women vision<br/>Center Branch', 'Seongnam Gyeongwondae Branch'<br/>Exported Derma Cell Renew Cream &amp; Blemish Balm Cream to Turkey</p> <p>2008 Established Cosmetic Factory in Sangdaewon-dong,<br/>Seongnam-City<br/>Opened AMAROS-Classic Beauty Salon, Dong-Seoul Univ.<br/>Branch, Seongnam-City', 'Seoul Sindaebang Branch',<br/>'Seongnam Sangdaewon Branch'</p> | <p>2008 Launched and tested 17 products by Korea National<br/>Beauty-Cosmetic Test</p> <p>2009 Exported AMAROS Cosmetics to Namibia, Dubai(UAE), Iran<br/>Opened AMAROS Beauty Salon, 'Incheon Bupyeong Branch',<br/>'Bundang Migum Branch', 'Seoul Gaebong Branch'</p> <p>2010 Opened 'AMAROS Classic' Beauty Salon, Guangzhou, '<br/>AMAROS Heritage', Beijing, China<br/>Applied Patent for 'Facial Analysis Machine' in Korea<br/>Signed 'AMAROS' Exclusive Sole Agency with Iran</p> <p>2011 Acquired patents for 9 Korean Oriental Ceramic Pottery<br/>Changed corporate name from SJ Co., Ltd. to "AMAROS Co., Ltd."<br/>Selected as the Best Cosmetics in Gyeonggi Province<br/>Registered "NoblRose" Brand for Trademark<br/>Established AMAROS Kazakhstan in Almaty, Kazakhstan</p> <p>2012 Signed 'AMAROS' Exclusive Sole Agency with F.Y.M., Indonesia<br/>Exported Amaros cosmetics to Warsaw, Poland &amp; Sophia, Bulgaria<br/>Signed MOU with GSBC Nantong, China</p> <p>2013 Exported cosmetics to Greece<br/>Opened an Exclusive Sole Agency in Chile and Bolivia<br/>Signed 'AMAROS' Exclusive Sole Agency in the Dominican<br/>Republic<br/>Signed 'AMAROS' Exclusive Sole Agency in the U.S.A.</p> | <p>2014 Conducted Educational Seminar in the Dominican Republic<br/>Participated in 'Asia 2014 Hong Kong' Exhibition</p> <p>2015 Signed an Exclusive Sole Agency in Japan and Opened<br/>AMAROS Japan<br/>Signed an Exclusive Sole Agency in Brunei Darussalam<br/>Received an Award of "Product which shined Korea" by<br/>Korean Government<br/>Signed an Exclusive Sole Agency in Malaysia<br/>Opened 'Seoul Myeonmok Branch', 'Seoul Nonhyeon Branch'<br/>Opened a AMAROS Salon at the Former Defense Education<br/>Ctr</p> <p>2016 Signed an Exclusive Sole Agency in Iran<br/>Appointed as a member of "North-South Exchange<br/>Cooperation Committee"<br/>Opened a Beauty shop at the Seoul Duty-Free shop<br/>Opened a Beauty shop in Shanghai, China<br/>Sponsored Indonesian International Beauty Competition<br/>Held a Seminar for Permanent Make-up in Indonesia<br/>Received an Award for Commemorative Event for<br/>Volunteers</p> <p>2017 Sponsored for Malaysia Beauty Contest<br/>Opened a Beauty shop in Cebu, Philippines and Shijiazhuang<br/>and Kunming, China<br/>Sponsored for Miss Global Beauty Queen 2017</p> | <p>2018 Signed an Exclusive Sole Agency in Vietnam<br/>Opened a Beauty Shop in Shijiazhuang, China and Manila,<br/>Philippines<br/>Signed an Agreement for Tokyo Branch, Japan</p> <p>2019 Invited to the Luncheon for 5 Economic Organizations<br/>hosted by the President of Chile<br/>Opened 'Busan Branch', 'Gwangju Branch', 'Seoul Guro Branch',<br/>'Seoul Yeoksam Branch', 'Seoul Seonneung Branch', 'Incheon<br/>Branch'<br/>Invited to 'Thai Market Pioneer Event and Visit Thailand' by<br/>GS Home shopping<br/>Invited to 'K-Beauty in Belgium' and Visited Europe<br/>Invited to "2019 G-Fair" in Dubai - Korean Outstanding Goods<br/>Exhibition<br/>Entered Toronto Market, Canada<br/>Invited to '2019 Dubai Korea Brand &amp; Entertainment Expo (KBEE)<br/>Signed an Agreement for Singapore Branch and opened<br/>AMAROS Clinic in Singapore<br/>Signed MOU with Hanoi Architectural University<br/>Signed 'AMAROS' Exclusive Sole Agency with Japan<br/>Awarded "Top of Exporters" prize from Korea International<br/>Trade Association - (\$1 million)<br/>Invited to "K-BEAUTY in DUBAI 2019"<br/>Enter the Good Morning Duty Free Shop</p> <p>2020 Invited to "2020 Beautyworld Saudi Arabia"<br/>Invited to "K-BEAUTY EXPO KOREA 2020"</p> |
|--|---|---|---|

## Patents & Certifications



**Collaboration!**  
**Research!**  
**Commitment!**



## Introduction

JNL Co., Ltd. has been to focus and manufacturing medical devices and beauty equipment (skin, obesity, and scalp).

## History

2005	Patented Two-Way "Flowerpot Rack" & "Umbrella Stand" (Utility Model)	2010	Set-up Beijing Corporation, China Registered Foreign Investment Company in China Exported O,H,L. Cosmetics to China Exported Cosmetics to Iran	2017	Sponsored for Malaysia Beauty Contest Opened a Beauty shop in Cebu, Philippines, Shijiazhuang and Kunming, China
2006	Opened JNL Business Promotion Ctr. at Kyeongwon Univ. Patented for Portable Eyebrows, Hair Growing Equipment	2011	Signed MOU with Ukraine, CIS Union Country Exported Cosmetics to Kazakhstan, Oman, Syria, Singapore, Malaysia Patented O,H,L. Penitra	2018	Signed an Exclusive Sole Agency in Vietnam Opened a Beauty shop in Shijiazhuang, China and Manila, Philippines
2007	Launched improved "4 O.H.L. Modeling Mask" Launched improved "3 O.H.L. Oil items" Exported Derma Cell Renew & Blemish Balm Cream to Turkey	2012	Signed an 'Amaros Exclusive sole Agency' with F.Y.M. Indonesia	2019	Signed an Agreement for Tokyo Branch, Japan Invited to the Luncheon for 5 Economic Organizations hosted by the President of Chile Opened 'Busan Branch', 'Gwangju Branch', 'Seoul Guro Branch', 'Seoul Yeoksam Branch', 'Seoul Seonheung Branch', 'Incheon Branch' Invited to 'Thai Market Pioneer Event and Visit Thailand' by GS Home shopping Invited to 'K-Beauty in Belgium' and Visited Europe Invited to '2019 G-Fair' in Dubai - Korean Outstanding Goods Exhibition Entered Toronto Market, Canada Invited to '2019 Dubai Korea Brand & Entertainment Expo (KBEE)' Opened AMAROS Clinic in Singapore
2008	Registered Trademark for O,H,L. Launched improved "3 O.H.L. Herbal Peeling" Accredited Venture Business to JNL Co., Ltd. Launched "Skin Treatment Machine & Color Therapy Steamer" Acquired KMAR ISO 9001 & KMAR ISO 14001 Established Cosmetic Factory in Sangdaewon-Dong, Seongnam-City Launched improved "Derma Cyder Lip Balm & Derma Eye Cream" Patented for Micro-Roller Equipment #1 Patented for Micro-Roller Equipment #2	2013	Launched Derma roller Acquired Trademark of "PENITRA"	2020	Invited to "MEDICAL JAPAN 2020 OSAKA" Invited to "2020 International Esthetics, Cosmetics & Spa Conference Las Vegas" Invited to "K-Beauty & Cosmetic Show 2020 K-BEAUTYCON" Invited to "48th International Exhibition of Inventions Geneva"
2009	Exported Cosmetics to Namibia Dubai(UAE), Iran Patented for Portable Hair Growing Equipment Set-up JNL Affiliated Laboratory Patented for Micro-Roller Equipment #3 Exported Amaros Cosmetics to Japan	2014	Conducted Educational Seminar in the Dominican Republic Participated in 'Asia 2014 Hong Kong' Exhibition		
		2015	Exported Cosmetics to Beijing, Liaoning Province, China and Malaysia Moved Headquarter to former Defense Education Ctr (B1)		
		2016	Signed an Exclusive Sole Agency in Iran Appointed as a member of "North-South Exchange Cooperation Committee" Received an Award for Commemorative Event for Volunteers Awarded "Jang Yeong-Sil" prize from Korean Science and Technology National Congress - (Medical Beauty Machine)		

# Dream of Actuality!

Micro Needle (Patented)  
 Portable Machine (Patented)  
 Portable Eyebrow Hair Promotion Equipment (Acquired Utility Model)  
 Electric Needle Activation Machine for Hair Growth Tissue (Patented)  
 Anti-Wrinkle Cosmetics (Registered with Korea Food & Drug Administration)  
 Whitening Functional Cosmetics (Registered with Korea Food & Drug Administration)  
 Hair Growth Solution (Patented, Acquired Utility Model, Trademark Right)



Accredited to Venture Business



Certified by US Food & Drug Administration



Korea Food & Drug Administration



ISO 13485 : 2016



ISO 9001 : 2015  
ISO 14001 : 2015





Amaros Co., Ltd.'s cosmetics are used in hospital and luxury SPA in more than 60 countries, and is a global company specializing in cosmetics and medical beauty equipment that directly researches, develops, and produces various products.

We are constantly striving to pursue natural raw materials and to further spread the oriental medicine techniques and efficacy to the world.

We will do our best to gain trust from customers around the world with the best proven products they can trust.

Sun-A Kim,  
CEO of Amaros Co., Ltd.

## One Stop

- Laboratory
- Education
- Manufacturing
- Franchise

## “4 KINDS OF BRAND” INTRODUCTION



### AMAROS

‘AMAROS’ means Amaranth  
(Everlasting Flower+Rose) “Everlasting Beauty  
with Amaros”



### O.H.L

‘O.H.L.’ means  
“Oriental Herb Lab”



### ACNE LAB

‘Acne Lab’ means  
“Professional Acne & Troubled Skin Product  
Laboratory”



### NOBLROSE

‘NoblRose’ means “Noble+Rose” which is formulated  
with highest quality “E.G.F. & F.G.F. + Rose Water”







Amaros education

## AMAROS VISION

Through continuous research and development and the creation of new ideas, we will present a new model in the domestic beauty market and develop a variety of customer groups and markets, thus becoming a loyal and sound professional company leading the 21st century.



### Everybody's Satisfaction

Realize a win-win culture that can satisfy franchisees, customers, employees, traders, society, and everyone by creating sound profits



### Harmony and Love

Building a stable company that consists of everyone's harmony and consideration



### Creativity and Challenges

Future-oriented company design global total beauty system with creativity and challenge in a free atmosphere



### Talent-building

Fostering talents based on the introduction of new management techniques and the development of skills with branches (60 countries) around the world



## AMAROS exports to 60 Countries !

Amaros Professional & Aesthetic Cosmetics export to the World!

Amaros Co., Ltd. exports to 60 countries around the world.

It is recognized in the world and guarantees more differentiated quality.



# Derma



Derma Cyler line is AMAROS' **Cosmeceutical products** based on skin regeneration cycle. They are ideal for daily use and post chemical peeling treatment (IPL, I2PL, etc.). They contain high quality ingredients such as Portulaca Oleracea Extract, Micro-Collagen, Seaweed Extract, Ceramide, Hyaluronic Acid, Shea-Butter, Tocopherol, etc..

## Derma Series

(NMF:Natural Moisture Factor)

### Derma Eye Cream

**FDA** Certified by US Food & Drug Administration

Customer price : 78.00 \$  
Volume : 10gx2ea

Improve fine wrinkles and dark circles under eyes for all skin types.

**Anti-aging effect** - Minimize the fine wrinkles by boosting cell restoration and recovering the damaged skin-barriers.

**Improve dark circles** - Antioxidants which helps to decrease melanin formation and to brighten dark spots.

**Extensive eye area care** - Improve skin texture, firmness and elasticity in the eye area.

- E.G.F. (Epidermal Growth Factor)
- F.G.F. (Fibroblast Growth Factor)
- NMF (Natural Moisture Factor) Sodium PCA 50%
- Moisture enhancing component
- No Chemical Glycerin and Paraben.

►Directions: After serum and toner, apply around eye area twice daily and gently dab with a fingertip.



### Derma Lip Balm

**FDA** Certified by US Food & Drug Administration

Customer price : 78.00 \$  
Volume : 10gx2ea

Soothe the chapped lip moisturized and nourished and change dark lip color to healthy and pinky tone.

**10% Vitamin E (Tocopherol)** which facilitates blood circulation, skin repair, softening.

**Tocopherol (Vitamin E):** Facilitate cell creation, anti-aging, anti-cancer effect.

►Directions: Apply on chapped parts of the lip. Recommend to slather on the very dry lip at night.



### Derma Blemish Balm

**FDA** Certified by US Food & Drug Administration

Customer price : 68.00 \$  
Volume : 10gx2ea



Accelerate recovery of weakened skin and soothing sensitive skin after dermatological treatment (laser, peeling, etc.) with antibiotic and anti-inflammatory medicinal function. Excellent effect to alleviate scars, atopic dermatitis (containing **Centella Asiatica** extract, raw material for Madecassol) and protect against UV rays - UVB: SPF 15, UVA: PA+ Correct uneven skin tone, blemishes without unwanted stickiness and control over-produced sebum. Can be an alternative makeup base and foundation.

►Directions: After basic skin care, apply sufficient amount and pat lightly for absorption till blending with your skin tone.

## Derma Nutrition Cream

Customer price : 78.00 \$  
Volume : 50g



For All skin types, Undernourished and poor-elastic skin, chemically peeled skin. Ceramide improves moisture level which leads to clear, supple skin and keeping pH balance. **Excellent for regenerating cells** with clarifying, rejuvenating effect.

**Must item** for regenerating and restoring damaged skin after aesthetic treatment (IPL, chemical peeling).

Main Components:

- E.G.F. (Epidermal Growth Factor), F.G.F. (Fibroblast Growth Factor)
- NMF (Natural Moisture Factor) Sodium PCA 50% - Moisture-enhancing component
- No Chemical Glycerin and Paraben.

►Directions: Apply sufficient amount on the face and neck daily morning and night. Highly recommend after Aesthetic treatment (IPL, chemical peeling, etc.).

## Derma Energetic Cream

Customer price : 78.00 \$  
Volume : 50g



Ideal for severely Dry and Undernourished skin.

**Improving Natural Moisture Factor (NMF) layer** promotes **relieving dryness and intensive hydration** that leads to resilient and deeply moisturized skin. And Excellent nourishing cream for dry, undernourished skin with preventing oxidizing.

Main components:

**Sodium Hyaluronate:** Excellent properties for retaining intensive moisture brings elastic, smooth skin.

**Shea Butter:** Vitamin A, E, F has properties for moisture, elasticity, brightness, skin protection.

**Squalene:** Extracts from the liver of deep seawater Shark enhances elasticity and vitality.

►Directions: Apply sufficient amount on the face daily morning and night. Can be used before Gypsum mask pack.

## Derma Conditioning Cream

Customer price : 78.00 \$  
Volume : 50g



Ideal for sensitive, Acne-prone, troubled, large pores skin as preventing blood congestion of **capillary and controlling over-produced sebum**. Improve acne scars, uneven skin to smooth, clear surface.

►Directions: Apply sufficient amount on the face daily morning and night.

## Arbutin Whitening Serum

Customer price : 88.00 \$  
Volume : 50g



Stimulate self-control system of skin to restrain melanin which leads to freckles, blemishes and help to remove waste in skin by detoxification. Supply Intensive moisture around dry, delicate eye area resulting in anti-aging and whitening effect.

►Directions: Apply sufficient amount on the face. Highly recommend to use with Derma Nutrition Cream and Whitening Modelling Mask Pack for the better whitening.

## Whitening Serum&Sun Cream

### Camellia Multi-Action UV Sun Serum

Customer price : 78.00 \$  
Volume : 50g  
**FDA NDC 60899-030-01**



**Camellia extracts is one of the best components for blocking ultraviolet rays.** As a multi-functional cream for whitening, anti-wrinkle, moisturizing, mild particles of this serum prevent blemishes without irritation and stickiness. Ideal for out-door sports activities like swimming, skiing, mountain tracking. **Safe for children** and sensitive skin

**Certified SPF 45/PA++ by KFDA, FDA**

►Directions: Apply sufficient amount on the face and body 20 minutes before going-out.

# Herbal Set

## Herbal Powder

Excellent for treating Acne and Acne scars by controlling sebum secretion and perfect solution for teens and adult Acne treatment with amazing cure for early pimples.

Firm and radiant skin tone is brought by reducing enlarged pores, freckles, blemishes, dark spots and fine wrinkles and supplying nourishment to skin with abundant minerals.

Highly recommend to use Derma Nutrition Cream after Herbal Peeling for faster skin restoring.

Acquired Korean Patent for O.H.L. Herbal set in Technical Corporation with Dongkuk University, Korea.

Customer price : 250.00 \$  
Volume : 20g



## Solution

Customer price : 95.00 \$ Volume : 250ml

Facilitate Herbal powder particles to penetrate deep into skin and remove dead skin cells.

► Directions: Combine with Herbal Powder

- ① Mix solution with Herbal powder - 1: 5 ratio (powder 1g: solution 4-5 pumping).
- ② Apply mixture all over the face with fingertips avoiding eyes and lip area.
- ③ Press mixture firmly with fingers against the face for Herbal components absorbed into skin.
- ④ After 3-5 minutes, spray O2 Spray all over the face and leave it for 10 minutes.
- ⑤ Spray O2 Spray 1 more time and leave it for 2-3 minutes.
- ⑥ Wipe off with a warm towel.
- ⑦ Apply Derma Nutrition Cream or your own cream.



## Seaweed Remover Point MakeUp

Customer price : 95.00 \$  
Volume : 500ml

Specially infused with Seaweed extract which lifts off all types of makeup. Effectively eliminate heavy eye make-up, stubborn waterproof mascara, lipstick, etc. With very mild and non-dry, non-greasy texture. Protect sensitive eye area and eye lashes with smooth cleansing.

► Directions: Wet a cotton pad with Remover and place it on the eye area for 1 minute. Gently wipe the eye area off as it is the tenderest skin. Use a lukewarm wet towel to clean.



## O2 Spray

Customer price : 16.00 / 35.00 / 95.00 \$  
Volume : 15ml / 60ml / 250ml

Suitable for all skin types and excellent for dry and sensitive skin containing more than 20 oriental herbal extract. Improve skin tone with instant rehydration, generous moisture and soothing. Can be used on top of makeup and ideal for hot, dry weather for cooling, refreshing. Convenient for out-door and in-door activities.

Main components:

**Portulaca Oleracea:** Traditional medicine of the plant root used as antipyretic and antidote agents. Effective to treat allergy, irritation, infection and used to eliminate toxin. 20 times more effective soothing than aloe.

**Peptide:** Protein structure with moisturizing and cell regeneration function.

**Ceramide:** Essential component for skin hydrolipid barrier protecting skin and moisturizing.

► Directions: Spray on the face and area needed.



FDA NDC 60899-040-01

FDA Certified by US Food & Drug Administration

## Seaweed Cleansing

Customer price : 38.00 / 90.00 \$  
Volume : 150ml / 1,000ml

Being made from natural botanical oils (seaweed, vitamin) removes skin wastes and makeup residue without skin irritation. Help to restore skin balance and improve skin metabolism function.

► Directions: Pump sufficient amount and massage gently all over the face before wiping off with tissue papers.

FDA NDC 60899-050-01

FDA Certified by US Food & Drug Administration



## Cleansing



# Deep Cleansing

► Directions for all Deep Cleansing Series: Apply Deep Cleansing Cream on the clean face with a brush. Wipe off with warm water or a wet towel after 10-15 minutes.

## Scrub Deep Cleansing Cream

Customer price : 38,00 \$  
Volume : 150ml

Fine particles of botanical scaling cream exfoliate dead skin cell layer and **absorbs sebum from the pores, improving skin tone to clear, translucent.** Improve moisture level and prevent horny layer of epidermis thicken.

► Ideal for Oily skin, Large pores, Acne-prone skin.



## Gommage Deep Cleansing Cream

Customer price : 38,00 \$  
Volume : 150ml

Made from **Natural Plant oil (sesame oil, jojoba oil)** promotes body circulation through massage. Also **prevents wrinkles by stimulating skin cell metabolism and regenerating skin.** **Natural Cellulose** particles create scrub effect and boost skin clear, bright by removing dead skin cells and waste.

► Ideal for Dry skin, Acne skin, aging skin



## Enzyme Deep Cleansing Cream

Customer price : 38,00 \$  
Volume : 150ml

Natural enzyme ingredient fuses into the pores and **removes dead skin cells without irritation and tightening** feeling. Light Amino acid, similar to human skin, **makes balanced pH**, soft and moisturized skin. Effective for damaged skin by laser and **sensitive skin.**

► Ideal for All skin type, Sensitive and Troubled skin.



## Enzyme Powder

Customer price : 40,00 \$  
Volume : 40g

**Mild peeling** product with light **Amino acid** and **natural enzyme removes dead skin cells, sebum, and blackhead.** Components from Papaya and **natural corn starch prevent tightening feeling** and Diatomite controls over-produced sebum, blackheads.

► Ideal for All skin type

► Directions: Mix sufficient amount with little water and make foam. Massage the face for 1 minute with foam. Wash with warm water.



\* All products are suitable for both home and professional shops.

 Certified by US Food & Drug Administration



## 2 Peeling Products

### Alpha Hydroxy Acid(A.H.A) & Beta Hydroxy Acid (B.H.A)

Rebirth your Skin with  
Amaros Regenerative and Moisturizing Products!

A.H.A : (Alpha Hydroxyl Acid): **Fruit acid base. (Natural fruits acid).**

B.H.A : (Beta Hydroxyl Acid): **Build skin protection** tissue during A.H.A. treatment minimizing side-effect caused by **chemical peeling for Acne and anti-aging treatment.**

#### Super Peeling (A.H.A + B.H.A 30%)

Customer price : 60.00 / 120.00 \$  
Volume : 30ml / 100ml

It is effective for oily skin with **over-produced sebum**, **acne-prone skin**, dry wrinkled skin with rough texture, **heavily pigmented skin**, and **uneven ashy skin with scars**. Protecting from various skin troubles makes scars recover smoothly and leads to luminous, glow skin.

► Ideal for Thick skin, Acne-prone skin



#### Peeling Active (A.H.A + B.H.A 10%)

Customer price : 50.00 / 110.00 \$  
Volume : 30ml / 100ml

**Regular skin** scaling is very effective to improve and whiten acne, acne scar, large pores, fine wrinkles, excessive sebum, dull skin with **dead skin cells**, freckles, blemishes, spots, damaged skin by ultraviolet ray and etc.. Recommend to use once weekly and twice monthly depending on skin conditions.

► Ideal for Thin, Sensitive skin, Normal skin



► Use a steamer or warm towel for 5 minutes to open the pores. ② After removing residual moisture, apply with a brush. ③ Wipe off after 5 minutes (10 minutes for acne skin). ④ Apply soothing gel.

# Skin Toner

## Herbal Skin Toner

Volume : 150ml / 1,000ml

Customer price : 38,00 / 90,00 \$



It is made from various **Natural Herbal extract** which can be found in Korea. By balancing moisture level makes skin clear, radiant.

►Directions: Wet a cotton pad with toner and pat the face and neck. Recommend to use Nano ample; Gold serum, E.G.F. &F.G.F. Whitening serum, Platinum Anti- Wrinkle Serum afterwards.

**FDA NDC 60899-060-01**

**FDA** Certified by US Food & Drug Administration



# Oil

## Oriental Herbal Oil

Volume : 100ml Customer price : 45,00 \$

Effective for **lymph circulation, skin wastes excretion and strengthening immunity**, minerals, vitamins in the oil help recovering fatigue and daily strain. Natural oil components and Oriental Herb medicine which can be found in Korea facilitate enhancing muscle relaxation, blood circulation, locking moisture. Can use for the face and body.

►Main components: Jojoba oil, Sweet almond oil.



## Detox Oil

Volume : 100ml Customer price : 45,00 \$

By eliminating skin waste and toxic **metabolite boosts healthy, vital, bright skin** improving blood circulation. Use for the face and body.

►Main components: Cupressus Semper-virens oil, Sandalwood oil, Lavender oil.



## Slimming Oil

Volume : 100ml Customer price : 45,00 \$

Help to increase skin metabolism and **breakdown of lipids. Preventing fat accumulation in subcutaneous tissues** and eradicating cellulite, helps body slim and light. Use for body.

►Main components: Rosemary Leaf oil, Sunflower Seed oil.



# Nutrition cream

## Cell Renew Cream

Volume : 300g    Customer price : 103.00 \$

For All skin types, Undernourished and poor-elastic skin, chemically peeled skin. Ceramide improves moisture level which leads to clear, supple skin and keeping pH balance. **Excellent for regenerating cells** with clarifying, rejuvenating effect.

**Must item** for regenerating and restoring damaged skin after aesthetic treatment (IPL, chemical peeling).

Main Components:

- E.G.F. (Epidermal Growth Factor), F.G.F. (Fibroblast Growth Factor)
- NMF (Natural Moisture Factor) Sodium PCA 50% - Moisture-enhancing component
- No Chemical Glycerin and Paraben.

►Directions: Apply sufficient amount on the face and neck daily morning and night. Highly recommend after Aesthetic treatment (IPL, chemical peeling, etc.).



## Recharging Cream

Volume : 300g    Customer price : 103.00 \$

Ideal for severely Dry and Undernourished skin.

**Improving Natural Moisture Factor (NMF) layer** promotes **relieving dryness and intensive hydration** that leads to resilient and deeply moisturized skin. And **Excellent** nourishing cream for dry, undernourished skin with preventing oxidizing.

Main components:

**Sodium Hyaluronate:** Excellent properties for retaining intensive moisture brings elastic, smooth skin.

**Shea Butter:** Vitamin A, E, F has properties for moisture, elasticity, brightness, skin protection.

**Squalene:** Extracts from the liver of deep seawater Shark enhances elasticity and vitality.

►Directions: Apply sufficient amount on the face daily morning and night. Can be used before Gypsum mask pack.



**FDA** Certified by US Food & Drug Administration

## O.H.L Fluid I Platinum Firming Serum

Volume : 30ml / 190ml    Customer price : 88.00 / 280.00 \$

**Reduce fine, deep wrinkles** and improve skin elastic, healthier as providing anti-aging effect. Minute Platinum particles absorb into skin easily and brings great result.

**Platinum particles:** Help to eliminate of oxygen free radical which leads to skin-aging.

**Copper Tri-Peptide:** Provide treating wounds, reviving skin cells, promoting collage, improving skin texture.

**Portulaca Oleracea extracts:** Soothe skin irritation, allergy with antibacterial effect. Improve wrinkles, moisture.

**Calendula Officinalis Flower extracts:** Soothe and sterilizing effect with antiseptic.



**FDA NDC 60899-110-01**

## O.H.L Fluid II E.G.F. & F.G.F. Brightening Serum

Volume : 30ml / 190ml    Customer price : 88.00 / 280.00 \$

As high-quality skin rejuvenating cosmetics developed with Skin balancing program, **excellent for whitening** by providing continuous nourishment and moisture to damaged skin.

- **E.G.F. (Epidermal Growth Factor):** Promote skin regeneration by activating cell proliferation. Enhance hydrophilicity, moisturizing, whitening, elasticity, skin protection barrier.

- **F.G.F. (Fibroblast Growth Factor):** Protein which is promoting growth of fibroblasts under epidermis. Highly effective like cell regenerating by stimulating keratinocytes, collagen, epidermal stem cells.



**FDA NDC 60899-100-01**

► Apply daily (morning, night) on the clean face after toner. Can see the result after 2 weeks.



## Regulating Cream

Volume : 300g    Customer price : 103.00 \$

Ideal for sensitive, Acne-prone, troubled, large pores skin as preventing blood congestion of capillary and controlling over-produced sebum. Improve acne scars, uneven skin to smooth, clear surface.

►Directions: Apply sufficient amount on the face daily morning and night.



## Radio Frequency Cream

Volume : 300g    Customer price : 85.00 \$

RF Cream is a new promising technology for non-surgical body contouring, fat, and cellulite reduction effectively helping to penetrate High Frequency deep into skin. Containing Squalene which provides nourishment and moisture improves anti-aging, wrinkle reduction, whitening. Used widely in plastic surgery and dermatology, aesthetics.

► Massage without wiping after managing the device is fine.

(Use as an oil massage cream.)



## O.H.L Fluid III Acne Serum

Volume : 30ml / 190ml    Customer price : 88.00 / 280.00 \$

Turn oily skin to normal one by controlling oil secretion and keeping pH balance. Containing anti-inflammatory, antibacterial, nourishing and moisturizing properties tighten enlarged pores and reduce blackheads. Soothe oily, acne-prone skin and build fresh and clear complexion.

**Tea Tree Oil:** With antibacterial, disinfectant properties, effective against bacteria causing acne.

**Centella Asiatica Extract:** Anti-aging and wound healing effect.

**Ceramide 3:** Soothing and calming skin.

**Vitamin E:** One of the most important lipid soluble antioxidant nutrients. Rejuvenate skin maintaining collagen, vitality.

► Apply daily (morning, night) on the clean face after toner. Can see the result after 2 weeks.



## O.H.L Fluid IV Nano Gold Nutrition Serum

Volume : 30ml / 190ml    Customer price : 88.00 / 280.00 \$

Improving damaged, sagging skin and regenerating cell tissues builds effectively healthy, radiant skin and youthful looking. Detoxification soothes atopic, severe dry troubled skin and reduces pore blockage by pH balancing. Protect skin from external environment and improve moisture, elasticity and immunity.

Nano Gold, Sodium, Hyaluronic acid, Allantoin, Ceramide 3, Copper Tripeptid-1, Portulaca Oleracea extract, etc.

Nano Gold: Nano Gold particles help to eliminate oxygen free radical which causes skin aging and to supply dermis nutrition. Outstanding components for cell regeneration, blood circulation, detoxification. Also facilitating collagen, elastin, and hyaluronic acid to increase moisture for healthier skin.



FDA NDC 60899-090-01

# OHL Modeling Mask



## NoblRose Modeling Mask (nourishment, moisture, whitening)

Volume : 1kg    Customer price : 89.00 \$

Providing rich moisture to rough, dry, ashy skin and nourishment to the deep layers promotes bright, luminous and supple skin. Soothe sensitive, irritated skin by toxin discharge, nourishment with minerals and rose water. Improve oily skin which builds up excessive sebum secretion by natural detoxification of rose water

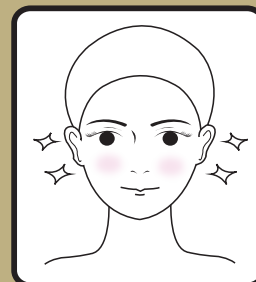
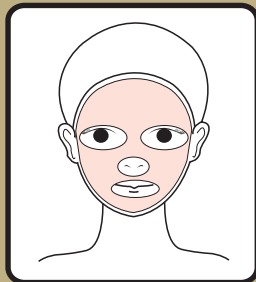
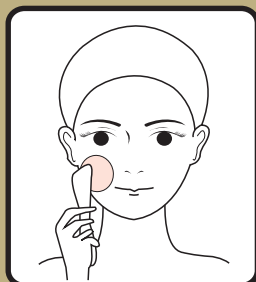
► When managing aging, nutrition, regeneration, and whitening

## Acne, Sensitive Mask (Cooling)

Volume : 1kg    Customer price : 89.00 \$

Containing natural oriental herbal medicine prevents skin inflammation and keeps pH balance, soothing, moisturizing. Alleviate any tension in circulation system to solve skin problems and to soothe sensitive acne skin.

► Soothing, cooling, and lifting effects for acne, diet management, and lifting management



► How to Use :

1. 1:1 mix well with the mask packs and water.
2. Using a paddle in the order of the mouth to see now after cleansing with rubber mask pack be spread.
3. Dry to About 20 to 30 minutes
4. After drying slowly remove the rubber mask packs from the chin.
5. End up with a rich cream and eye cream.



# Gel

## Herbal Soothing Gel

Volume : 150ml / 500ml    Customer price : 38,00 / 75,00 \$

Providing **moisture and nutrition** to dry skin keeps moisture balance and improves sensitive, oily and normal skin. Excellent for treating and recovering dull, saggy skin by UV rays and frequent outdoor activities. **Can be used as primary pack and use for the face and body.**

► Directions: Apply sufficient amount on the face daily morning and night.



## Seaweed Aqua Gel

Volume : 500ml    Customer price : 125,50 \$

**Natural massage gel** promotes cell regeneration, blood circulation and moisture level to bring healthy, glow skin. Improve skin elasticity and reduce fine wrinkles. **Containing natural Seaweed and natural sea Minerals provides generous moisture and nourishment to skin.** Excellent for dry skin and face and whole body. Water drops appear while rubbing the gel and makes skin moisty and fresh feeling. Can promote perfect makeup next day.

► Directions: Apply sufficient amount on the clean face at night. Leave the water drops appeared while massage. Wipe out after 20-30 minutes later if used with any mask pack. Can use mixture with a bit of foundation cream in the morning.



# Cream Mask

## Oil Control Mask

Volume : 150ml    Customer price : 38,00 \$

**Removing toxic substances** from inflamed skin and **controlling efficiently greasy** skin and excessive sebum secretion bring to clear, smooth, refresh skin.

► For Oily, Acne skin, Large pore, inflamed skin, Male skin  
► After this recommend OHL Modeling Mask (Acne & Sensitive Mask) for better effect.



## Cell Renew Mask

Volume : 150ml    Customer price : 38,00 \$

Removing skin waste and external pollutants makes skin bright, translucent. Soothe tired skin gently with strengthening protective barrier and **excellent for skin regeneration.**

► For Dry, Malnourished skin, Regenerating needed skin



 Certified by US Food & Drug Administration

FDA NDC 60899-010-01

## Revital Lifting Mask

Volume : 150ml    Customer price : 38,00 \$

Boosting blood circulation and antioxidants properties prevents unsaturated fatty acid turning into peroxide lipid. Effectively **delay skin aging and wrinkles** caused by toxic substances and improve elasticity and moisture level.

► For Dry skin, aging skin



## Sensitive Mask

Volume : 150ml    Customer price : 38,00 \$

Relieve and **soothe sensitive skin** and improve to more firm, brighter, moisty one.

► For Acne skin, Sensitive and Troubled skin.



► Directions for all Deep Cleansing Series: Apply Deep Cleansing Cream on the clean face with a brush. Wipe off with warm water or a wet towel after 10-15 minutes.

# Nano Gold Bio Sheet Mask Pack

## Nano Gold Bio Sheet Mask Pack

Volume : 35ml\*5 Customer price : 80.00 \$

Nano Gold Bio Sheet Mask is indisputable step to refresh not only the **eye area** but the **face, neck** at a time providing 2 sheets for the face and neck infusing with generous moisture and abundant nourishment transforms dull, tired skin to bright, luminous, moist by soothing, firming. Nano Gold components promote rapid cell regeneration and relaxation. It is highly recommended after Laser treatment (I2PI, ND-Yag, Fractional Laser, Chemical Peeling, etc.) as containing **Alpha Hydroxyl Acid (A.H.A)** which enables dead skin cells melt and nutrients absorbed

### ►Directions

- 1) Apply toner after washing the face. 2) Place a mask on the face and neck.
- 3) Remove after 20-30 minutes and massage the face with mask essence.

※ Keep a mask in a cool place before opening



Face + Neck



Certified by US Food & Drug Administration

FDA NDC 60899-020-01

## Amaros Diet 3 Step Line

### Perfect Line Hot Scrub Gel

(step 1)

Volume : 500ml Customer price : 140.00 \$

Heating the body up with Hot Scrub Gel opens pores to eliminate waste and cellulite fat accumulated in the subcutaneous fat and changes your body to a slim, svelte line. It is even absorbed quickly into subcutaneous fat of thick areas like hip, thigh, forearm and abdomen as Camitined burning the fat, Sodium Hyaluronate providing moisture and Capsicum Frutescens Fruit extract promoting blood circulation, burning body fat for vitalizing metabolism.

►Directions: Apply on the area where you desire to loose fat. Hot sensation will be followed Initial 3-5 minutes cool feeling if massage. Be cautious if take a shower or sauna as it gets hot in 10 minutes. Leave gel on the body with/without massage for 20 minutes and wrap the area for 10 minutes with plastic wrap. Remove the wrap if too hot, leaving it for 10-20 minutes and wash away.



### Lifting Shape-Up Cool Scrub Gel

(step 2)

Volume : 500ml Customer price : 140.00 \$

Cool scrub gel gives strong cooling and refreshing feeling as a mild, non-sticky scrub. Providing moisture it accelerates pores lifting and restoring elasticity of skin with massage. Ideal for dull, poor-elastic area to eliminate difficult cellulite on hip, thigh, forearm and abdomen as it is absorbed quickly into beneath. It makes effectively shape-up of man's six-pack abs (abdominal muscles), chiseled chest and strong forearms and ladies' as well.

►Directions: Leave it for 20 minutes with/without massage. Wrap the area with plastic wrap for 10 minutes for the better effect.



### Slim S Line Hot Diet Cream

(step 3)

Volume : 300g Customer price : 140.00 \$

Hot Diet Cream destroys cellulite in the deep layers and disrupts the further formation of subcutaneous fat by heating the body up and accomplishes the body slim and smooth skin with nourishment from various herb components. Capsicum Annuum accelerates blood circulation, fat burning and metabolism. It is absorbed quickly into to tackle difficult cellulite of hip, thigh, forearm and abdomen to achieve a slender body.

►Directions: Apply with smooth massage movement. Can be used as a substitute of nourishing cream or moisturizer.

►Point-> For better result apply 1) Hot Scrub Gel first (20 minutes). 2) Cool Scrub Gel (20 minutes). 3) Hot Diet Cream lastly.



# DERMAROLLER™

Customer price : 980.00 \$

Patent: No. 10-0886492

Certificate of Utility Model Registration: No. 20-0422231

Trade Mark Registration: No. 0638563

With Electroporation technology DERMAROLLER (DR-A) penetrates safely, easily into deep tissues nourishment such as Collagen, Hyaluronate acid, Oligo-Nucleotide, Peptide, and natural extract ingredients without pain and needles. Electroporation (EP), non-chemical mean enables to permeate various good cosmetic substances into the deep tissues (Dermis) without changing biological cell structure and function resulting in remarkable skin treatment.



Certified by US Food & Drug Administration

## Effect:

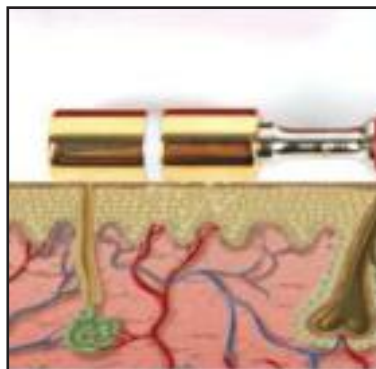
1. It gives multi-effect such as Moisturizing, Whitening, and Anti-aging with 3 mode of Intermediate Frequency EP (Electroporation).
2. NNN™ (No Need Needle) Technology with MP (Mesoporation) - Aging skin care without pain.
3. Gold plated roller head - EMS (Electrical Muscle Stimulation) with Lifting-up massage effect.

### · Dermaroller™ 3 in 1 Mode



- Bipolar system application: Self-treatment or for others.

### · NNN™ Technology



- Enable to use for all skin types.
- Opening channels temporally to permeate cosmetic components into the skin tissues.



## 3in1 SYSTEM

### DERMAROLLER™ EP

Portable device helps skin to maximize absorption of cosmetic components into deep tissues.

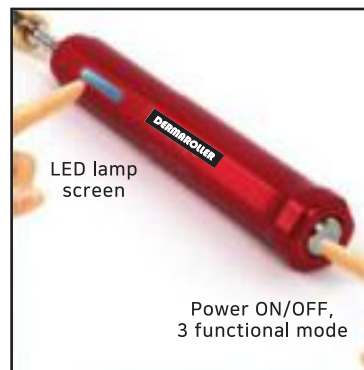
### DERMAROLLER™ MP

No needle, No pain technology makes cosmetic components makes cosmetic components.

### DERMAROLLER™ EMS

Makes vitalizing skin tissues with contracting muscles.

### · 1 Button for all 3 mode



- Only 1 button for all 3 mode of EP.
- Compact and smart design, easy use and convenient storage.

### · Fine Lines & Skin Treatment



- Monopolar system application: Fine lines and skin treatment

# Acne Lab Set



Acne Lab Set is very specialized line of Amaros for pimples, early and progressed **acne skin**. Acne Lab Spot Serum and Acne Lab Conditioning Cream will keep your skin as fresh as emerging face from mask pack. Acne Lab line **helps to care your acne problem with hassle-free**.

## Acne Lab Skin Toner

Volume : 60ml



A specialized **Toner for Acne promotes to keep pH balance** of severely oily acne, problematic skin and turns over-sensitive skin into moisty and silky one by clarifying pores gently. It can treat three problems at a time: **Controlling excessive sebum, removing old dead skin cells and treating troubled skin**.

►Directions: Apply evenly a sufficient amount on the face and neck.

## Acne Lab Conditioning Cream

Volume : 30g



Specially formulated Acne Conditioning Cream has been developed for oily and problematic skin to **help to keep oil balance** through removing skin sensitivity. **It restores powerful protection layer for tired, stressed skin and balances moisture level all day long**.

►Directions: Spread evenly a sufficient amount on the face after Acne Lab Spot Serum.

## Acne Lab Facial Cleanser

Volume : 60ml



**Low irritating Acne Facial Cleanser** removes completely excessively produced sebum and waste to keep your skin clean. As well as eliminates residue from the pores of oily, acne skin without little irritation. It maintains your face fresh, moisty and well balanced after cleansing.

►Directions: Pump a sufficient amount and create rich foam. Massage the face gently with form in a circular motion and rinse it off.



Certified by US Food & Drug Administration

FDA NDC 60899-080-01

## Acne Lab Spot Serum

Volume : 40ml



An intensive Serum for Acne and Troubled skin solves problems of enlarged pores, over-produced sebum, and polluted dead skin cells **without fuss of irritation**. It comports sensitive, acne skin to turn healthy and clear skin through effective pore management with anti-inflammatory and anti-bacterial control.

►Directions: Dab a proper amount on the troubled spots or spread evenly on your face after toner.



Customer price : 250.00 \$





## NoblRose Facial Cleanser

Volume : 100ml

Premium facial foam cleanser made from Rose Water provides long lasting moisture to keep your skin hydrated and lively. And eliminates completely any old skin waste and makeup residue to rebuild your skin clean and radiant.

►Directions: Gently rub your face with foam with 30 Co - 40 Co water and rinse off with Cold water. Pat your face with a dry towel.

**FDA** Certified by US Food & Drug Administration **FDA NDC 60899-070-01**



## NoblRose Anti-Aging Eye Cream

Volume : 30g

Premium Eye Cream with **E.G.F. (Epidermal Growth Factor) & F.G.F. (Fibroblast Growth Factor)** brings dark circles and eye wrinkles down remarkably at a time. Excellent in reducing various wrinkles and lines forming a protective layer around the eyes and keeping the eye area firm and supple.

►Directions: Apply around the eyes before NoblRose E.G.F. & F.G.F. Perfect Nourishing Cream. Gently pat with your ring fingers.



## NoblRose E.G.F. & F.G.F. Perfect Nourishing Cream

Volume : 50g

Abundant Premium Nourishing ingredients such as **E.G.F. (Epidermal Growth Factor) & F.G.F. (Fibroblast Growth Factor)** build moisturizing factors in skin layers to form a protective film which leads to strengthen elasticity and moisture level. E.G.F & F.G.F. special nourishing cream revitalizes tired, dull skin to vibrant, radiant and healthy skin with its amazing enhancing capability.

►Directions: Spread well over the face after NoblRose White & Wrinkle Repair Serum.



## NoblRose Soothing Balance Toner

Volume : 100ml

Permeating to deep in skin Soothing Balance Toner gives rehydrating each skin cells while maintaining pH balance for moisty skin. Rose water has an outstanding ability to retain moisture making your skin revival and glow in a short time.

►Directions: Apply a sufficient amount on your face after cleansing.



## NoblRose White & Wrinkle Repair Serum

Volume : 40ml

Providing E.G.F. & F.G.F. for whitening and Anti-wrinkle, this serum refills essential moisture and nutrition in the impoverished skin. Effectively reduces wrinkles and enhances whitening.

►Directions: Dab a proper amount on the troubled spots intensively or spread evenly on your face after toner.

**KFDA** Food and Drug Administration certified whitening & wrinkle cosmetics



Customer price : 980.00 \$



# AMAROS DERMA PEN

KOREA PERMANENT OPERATE PIGMENT

1Box set [Machine 1ea | colour 5ml\*3ea]

Customer price : 680,00 \$

## Features of Derma Pen

1. Strong power - 5V high grade motor (coreless motor)
2. Low noise - minimizing the noise with precise design and absorbing vibration.
3. Maximized adjustable length - 1P-MTS needle with rotating technology.
4. Multi-function - 3 step adjustment function.
5. Secured needle - Screw type needle fitting.
6. Useful handle - Comfortable grip
7. Exquisite finishing with Laser - Durability by laser manufacturing

## Directions:

1. Connect an AC wire to a DC adapter.
2. Plug a DC adapter into the device.
3. Fix a selected needle to the mounting peak.
4. Turn on the electricity.
5. Press a power button and adjust intensity.
6. Adjust needle length with rotating the body.
7. Turn off the power pressing the power button for 2 seconds.

\* Purchase needles separately.

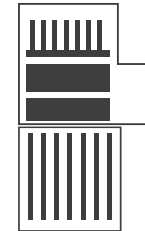
\* Turn off the power while changing a needle.

## The product's function and structure



## Needle Type

Needle Type : MTS



12 Point

Needle Type : ROUND



1 Point



3 Point



5 Point

Needle Type

SLOPE

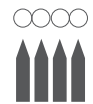
FLAT

SLOPE

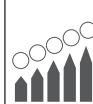
FLAT



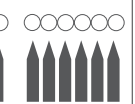
4 Point



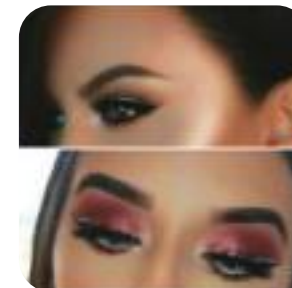
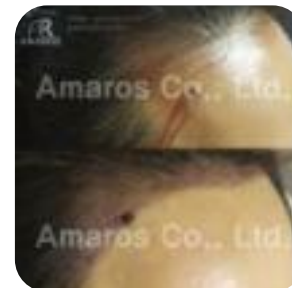
4 Point



6 Point



6 Point





# Eyelash Essence

## AMAROS LASH



AMALASH / Volume : 10 ml / 0,34 fl.oz      Customer price : 80,00 \$

Formulated with natural botanical extract and vitamins, Eyelash essence nourishes the eyelashes and its roots and makes effectively thin, little eyelashes to healthy and lustered by strengthening its keratin cuticles.

►Directions:

Apply to clean and dry eyelashes and eyebrows twice daily (morning & evening) before basic skin care. Gently push the wand up from the roots. Make intensive care in between the lashes if necessary.



Recommend to:

- Who has little lashes with side effect from eyelash extension.
- Who has thin, weak eyelashes and eyebrows including men and women.
- Who has eyelashes fallen out while removing eye makeup

## AMA Filler

Beffi Dew Filler is the 100% closest filler to the human body and a type of injection with hyaluronic acid as a main component. It has no negative reaction from the body after injecting to human tissues as our body has natural hyaluronic acid and is absorbed smoothly into the body without leaving any residue to bring you the natural beauty and confidence. Beffi Dew filler has series of Beauty line for enhancing the face and Secret line for the bust, hip, genitals and hair.

### Special Features of AMA Filler

- @ Beffi Dew Filler has Multi-Cross Linking technology to increase sustainability of hyaluronic acid.
- @ Beffi Dew Filler's effect and duration varies depending on the type of filler and the size of hyaluronic acid particles.
- @ Beffi Dew Filler is reliable and proven safety and efficacy through rigorous clinical tests and manufactured under strict standards.
- @ Beffi Dew Filler has the biggest advantage to retouch or redo the unsatisfied area after dissolving hyaluronic acid.
- @ Beffi Dew Filler is a non-invasive treatment which changes you attractive in a short time.
- @ Beffi Dew Filler has much longer lasting duration than others.

# Ama Filler

## Beffi Dew Special V



Volume : 1cc

One of Premium products of filler to apply any area of the face with good cohesiveness by high viscosity and easy molding with normal size particles.

With Multi-Cross Linking, suitable for forehead, between the eyebrows, cheeks, temples, nasolabial line, lips and volume up of soft tissue area.

## Beffi Dew Star



Volume : 2cc

It settles effectively with the tissues as Hyaluronic acid particles are very fine and high hydrophilic. It has higher durability than other products contributing to long lasting moisture and elasticity of skin.

Suitable for eye wrinkles, fine wrinkles, forehead, between the eyebrows, temples, cheeks, chin, nose, nasolabial line.

## Beffi Dew Beauty Fine



Volume : 1cc

Popular premium product among fillers has good cohesiveness by high viscosity and easy molding with small particles.

Suitable for eye wrinkles, fine wrinkles, forehead, between the eyebrows, temples, nose, cheeks, chin, nasolabial line, deep wrinkles.

## Beffi Dew Happy



Volume : 3cc

Used in a Urology, suitable for genital dermis of male and vaginoplasty for female.

## Beffi Dew Secret



Volume : 3cc

Used in a Urology, suitable for genital glans penis for male and vaginal shrinkage for female.

## Beffi Dew Special I



Volume : 1cc

The best sellable product among Beffi Dew Filler line. The highest viscosity and the largest particles. Multi-Cross Linking enhances skin resilience and durability.

Suitable for nose wing augmentation, nose, nasolabial line, forehead, chin and volume up of soft tissue area.

# Ama Filler Hair

NEW



Volume : 2cc

## Beffi Dew Filler Befull Hair

Befull Hair Filler has been developed especially for hair growth and hair loss prevention that is the biggest anguish of most men modern days and has acquired a patent in Korea for the unique and innovative technology.



\* owning manufacturing patent

### Core Technology of Befull Hair Filler

Characteristic of product	Application	As a tissue-compatible biomaterial, it provides continuous nutrition with treatment of natural extract, mixture for regeneration and reproduction achieving remarkable effect for hair growth and preventing hair loss.
	Core technology	strengthening sustainability with more than 3-4 grades of cross-linking technology.
	Difference from Others	Microbeads shape of the highest quality components makes hyaluronic acid of filler more durable.

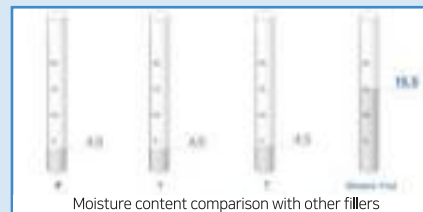
#### Long lasting shape

Microbeads multi-step cross-linking technology

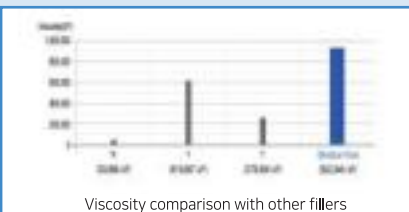


#### Excellent nutrition,moisturizing effect

Mixture components contributing to regeneration, reproduction



Moisture content comparison with other fillers



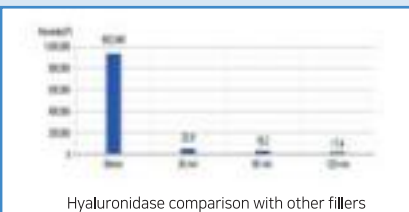
Viscosity comparison with other fillers

#### Preventing subsidence

Superior viscosity keeps distinct shape

#### Credible safety

Complete removal of hyaluronidase with solvents



Hyaluronidase comparison with other fillers

# ULDERMA II

## HIFU LIFTING SYSTEM

HIFU Lifting system applies a new **advanced technique of High-Intensity Focused Ultrasound**. HIFU stands in providing possible **non-surgical type of cosmetic wrinkle removal** for the traditional face lifting operation. The device releases highly concentrated focus of ultrasonic energy and delivers it into the deep layers of skin, what causes thermal coagulation to SMAS (Superficial Muscular Aponeurotic System).

High level of heat is condensed in the appropriate location for stimulating skin deep dermal tissue and producing more collagen. Skin tightening and rejuvenation are proceeded gradually with the time.

### ✓ Advantage

- Non-invasive technique to remove wrinkles effectively than traditional surgical lifting operation.
- Tighten and improve sagging and other aging skin.
- A special transducer that conducts high intensity focused ultrasound to SMAS layer.
- Transmit high thermal energy of 65oC-70oC or more to the specific skin layer.
- No surgery, no down time, no injection, no scars.
- Suitable for all age of male and female.
- Select right level of ultrasound for different skin with 3 elaborated transducers.
- Proprietary high-speed transmission technology in 0.1 to 0.2 seconds.
- Reach to all range of skin by 10.4 to 10 MHz broadband output of high performing transducer.

### ✓ Advantage



### ✓ Accessories

Standard configuration: DS-3.0mm, DS-4.5mm / Optional: DS-1.5mm



DS-4.5mm



DS-3.5mm



DS-1.5mm



Transducer Handle



# ULDERMA III

## OBESITY SYSTEM

Ulderma III applies **non-invasive focused ultrasound (Obesity) technology** which changes high-intensive ultrasound to thermal energy. This changed thermal energy reaches to subcutaneous layer penetrating fats with heat and affects **fat cells dissolved** resulting in fat loosening, skin tightening and collagen regenerating. The program transforming the electric stimulation signal to high frequency oscillatory waves operates focused ultrasound through the fixed hand piece and spouts radiation onto the specific targeted spots not injuring the nearby blood vessels, nerves. This system can dissolve the fat cells instantly and tighten skin effectively breaking the fat cell membrane by ultrasonic thermal energy.

### ✓ Advantage



### ✓ Accessories



# ULDERMA IV

## Vagina·Co2·Cutting [3 in 1 System]

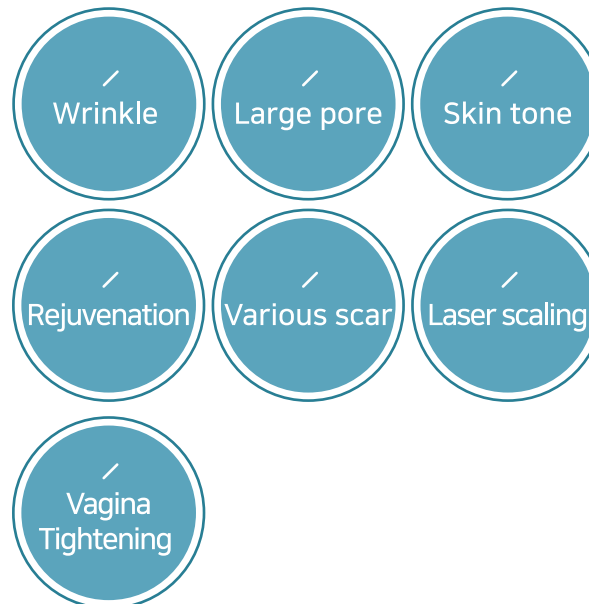
Ulderma IV Fractional CO2 Laser as a CO2 Laser produces a micro-unit of infrared beam to eliminate a lesion between the normal cells minimizing damage to skin and leaving the normal cells safely, consequently leading to short down-time and quick cell regenerating like a laser scaling. Therefore it brings amazing effect to treat pores, acne scars, stretch mark, corn, mantis callus and etc.. Remarkably reducing treating time and pain by increasing the peak energy more than 2,000 watt/pulse minimizes the damage to epidermis and deep skin dramatically.

The latest RF tube of CO2 Fractional Laser and Super-Light Fractional Laser facilitates to treat all kinds of ailment and SUI and VR handles of it can enhance to improve, alleviate Women's Vaginal and trouble by stimulating Vagina mucous membrane.

### ✓ Advantage

It gives clear improvement to the epidermis without disrupting daily life, and it can be expected to have a dramatic effect by examining the heat energy for the reconstruction of collagen that is essential for skin regeneration.

### ✓ Advantage



### ✓ Accessories

 RF Drive (Coherent Optional)	 7-joint Articulated Arm
 For Facial Treatment	 Cutting





# AM-101

## Touch screen 10 in 1

AM-101 Touch Screen 10 in 1 is a multifunctional aesthetic machine having 10 functions in 1 machine with latest touching screen technology consisting of 3 parts: Ozone Hot Spray Steamer, LED Photon Light and Multi-functional devices like Red Light Ultrasonic Probe, Blue light cold hammer, High frequency wand, Galvanic skin booster, Magnetic Resonance thermal hammer, Acne Vacuum Suction, Nutrition spray, Skin Scrubber. Ozone Hot Spray Steamer features optic sense with controlling spray arm and spray whole which detects malfunction automatically from long overuse. Multi-functional devices have a controlling touching screen with its own connecting jack, accessories which contributes cost effective and advantage of this machine. Furthermore, convenient accessories storage and wheels for easy moving makes your boutique and clinic more competitive and elegant.

### ✓ Advantage

multi-purpose aesthetic machine carries the latest touchscreen technology featuring 10 function in 1 machine.



### ✓ Accessories



### ✓ LED light 4 Colors



**Red light**  
Anti-aging,  
Cell Regeneration  
Skin Elasticity



**Green light**  
Skin Balance, Purification,  
Removal of Lymphatic Fluid



**Blue light**  
Acne, flushing



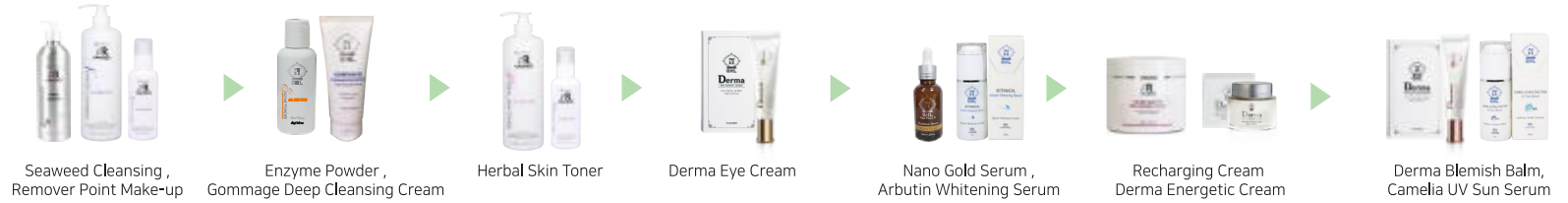
**Comprehensive light**  
red, blue, green  
Comprehensive daily care



# [Natural Skin Care Lines for different skin types]

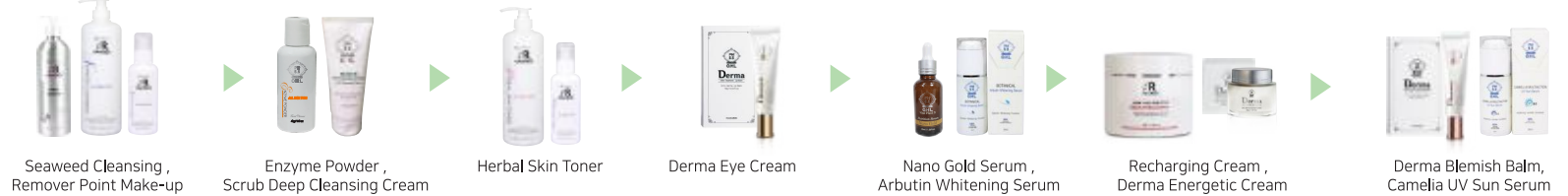
## [Dry skin line]

Skin treatment exclusively for dry skin.



## [Oily skin line]

Skin treatment exclusively for oily skin.



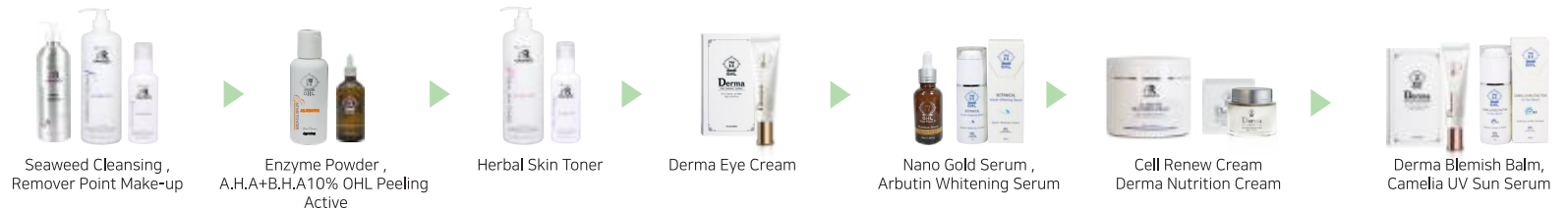
## [Sensitive skin line]

Skin treatment exclusively for sensitive skin.



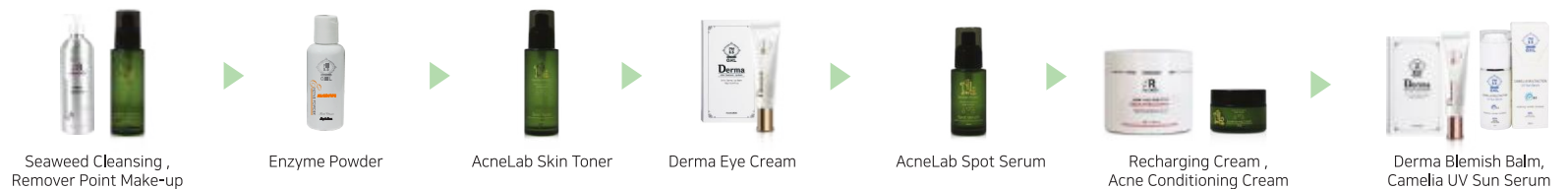
## [Normal skin line]

Skin treatment exclusively for normal skin.



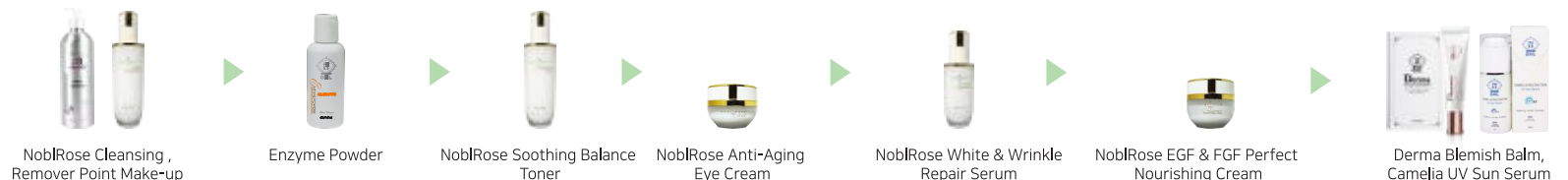
## [Acne skin line]

Skin treatment exclusively for acne skin.



## [NoblRose skin line]

Skin treatment exclusively for noblrose skin.



Daily using skin care products in esthetic shop or at home you will immediately achieve dramatic skin improvement.

## [Practice test set for Korean National Skin Care Expert Exam] (18 types)



01. OHL Peeling Active 100ml
02. Enzyme Powder 40g
03. Derma Cyclor Lip Balm 20g
04. Derma Cyclor Eye Cream 20g
05. Cell Renew Cream 300g
06. Radio Frequency Massage Cream 300g
07. Oriental Herbal Oil 100ml
08. HERBAL Soothing Gel 500ml
09. Herbal Skin Toner 1,000ml
10. Seaweed Cleansing 1,000ml
11. Gommage Deep Cleansing Cream 150ml
12. Scrub Deep Cleansing Cream 150ml
13. Point Make - Up Remover 500ml
14. Cell Renew Mask Pack 150ml
15. Oil Control Mask Pack 150ml
16. Revital Lifting Mask Pack 150ml
17. Sensitive Mask Pack 150ml
18. NoblRose Modeling Mask Pack 1,000g

Amaros Co., Ltd. is a reliable company that pursues the naturalness of raw materials, uses natural affinity ingredients, and has obvious competitive advantages in terms of function, quality and product value.

AMAROS Co., Ltd.



[www.amaroskorea.com](http://www.amaroskorea.com)

JNL Co., Ltd.



[www.jnlbio.com](http://www.jnlbio.com)

Korea : #701-703, B Tower, Woorim lions valley, 146-8, Sangdaewon-dong, Jungwon-gu,  
Seongnam-si, Gyeonggi-do, South Korea | TEL. +82-31-753-5154~5 / FAX. +82-31-753-5755



Accredited to Venture Business

Small & Medium Business  
Administration



kotra



Certified by US Food &  
Drug Administration



KIPO  
KOREAN INTELLECTUAL PROPERTY OFFICE



Korean Food &  
Drug Administration



ISO 9001 : 2015 ISO 13485 : 2016  
ISO 14001 : 2015