

Hair Density
Hair Loss
Hair Keratin
Scalp Sensitivity
Hair Thickness

Sebum
Wrinkles
Pores
Impurities
Skin Keratin
Skin Tone
Skin Sensitivity



DermoPrime *Skin and Hair Analyzer*



Product



dermo prime
diagnosis system

Science Behind the Product

Precise Analysis based on algorithms specifically created by Chowis in collaboration with Research & Development teams from major global brands like L'Oreal, P&G, Nivea

Skin Diagnostic System

- Triple- mode processing lens automatically conducts complete analysis of the desired area.
- Image results comparison based on stored images that have been categorized and analyzed by Skin experts.
- Graph interpretations of analysis are clear and easily interpreted.



SKIN PORES



- Highly magnified image of the skin's pores is captured and analyzed to determine skin quality
- 3D view available
- Captured image can be compared to stored app skin images as categorized by skin experts



SKIN WRINKLES



- Horizontal wrinkles manifested near the eye area is captured and analyzed
- 3D view feature available
- Image comparison available to match skin quality with stored images



SKIN PIGMENTATION/ SPOTS



- XPL mode on camera lens capture skin's spots/pigmentation and analyzed based on standardized algorithms
- Image comparison available to match skin quality with stored images as categorized by skin experts



SKIN IMPURITIES



- UVL camera mode is automatically set to capture skin impurities underneath the skin surface reflected in colors of white, green and red orange reflecting the presence of potential bacteria present on the skin
- Image comparison available to match skin quality with stored images as categorized by skin experts



SKIN KERATIN



- Making use of keratin tape on the skin's surface, dead skin cells are detected and measured based on the amount of keratin captured on the image from the tape



SKIN TONE



- Skin tone measurement may be set on camera setting correctly based on Skin Tone group
- Expert version provides analysis of skin tone in full spectrum



BLACKHEADS



- Measurement available in expert version utilizing images captured from VSL and UV light modes from camera lens



SKIN SENSITIVITY



- Additional measurement available in expert version helping identify sensitivity level of the skin

Science Behind the Product

Hair Diagnostic System

- VSL and XPL processing lens automatically conducts complete analysis of the desired area.
- Image results comparison based on stored images that have been categorized and analyzed by hair experts.
- Graph interpretations of analysis results are clear and easily interpreted.



HAIR LOSS

- A chart of the different types of hair loss serves as a guide to determine type of hair loss based on image captures



HAIR DENSITY

- Hair density analysis using manual and automatic hair count will determine if hair regeneration falls within normal range.



HAIR KERATIN

- Analysis using XPL mode shows the amount of dead skin present on scalp and are processed based on normal ranges.



HAIR SENSITIVITY

- Using XPL camera mode, scalp images may reflect redness which serves as an indicator of sensitivity. Results are then analyzed using algorithms which are then interpreted into numerical values from 0-99.



HAIR THICKNESS

- Hair does not easily break. Analysis on this factor is based on captured images of the hair strands and then analyzed and compared based on standardized algorithms with corresponding interpretation.

The Benefit

Compact Device with Superior Advantages



User Centric

customizable app for IOS and Android

Precise

optical Algorithms and hydration
measurements

Low Cost

for high quality mechanics and software

Reliable

production with robust quality control

Cloud Connection Capability

software for extended digital solutions

Minimal

ergonomic & compact design, that
can be used with any smartphone

Simple and Easy

convenient to use to assist beauty
counselors or dermatologists

Fast

installation, pairing, image
acquisition and results processing

New

cutting-edge, state-of-the-art,
modern, trendy, consultation with
pixel precise algorithm results

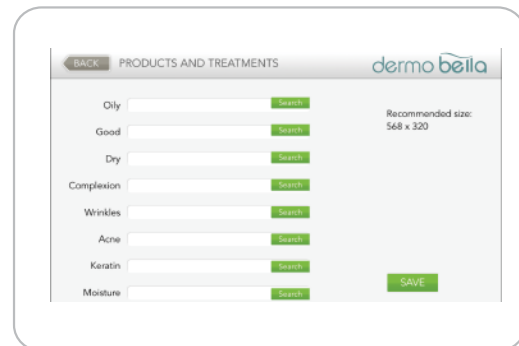
Tailored Treatment and Product Recommendation

Skin & Hair professionals and beauty consultants may save recommended products and link them as desired treatment to specific analysis results obtained.

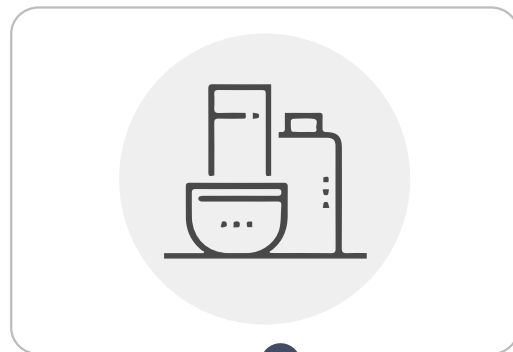
Results of each analysis are saved in the system to facilitate personal follow-up for each customer. Brand ambassadors can also customize products recommended in line with their offers, promotions and sales agreements



Product recommendation can be personalized under settings menu.



Upload images of products based on targeted skin or hair condition



Products are automatically linked and reflected after analysis results are obtained.



ABOUT CHOWIS



Skin and Hair Diagnostic Expert

Our top of the line skin and hair diagnosis systems are positioned to be well-designed mobile diagnosis tools with BIG Data and advanced algorithm. These devices are scientifically proven and certified by leading medical and cosmetic companies in the global Research and Development centers due to the accurate skin and hair diagnosis that these devices can offer.

With the help of our diagnostic systems, brands can bring out the most credibility to their products, and consumers can take a huge advantage by learning which product actually address their skin needs and hair conditions. We have also developed a line of products for home use, these are devices designed for home skin analysis and home hair analysis.

Experience the difference and make the best skin analyzer maker /hair analyzer maker in the industry your partner today!

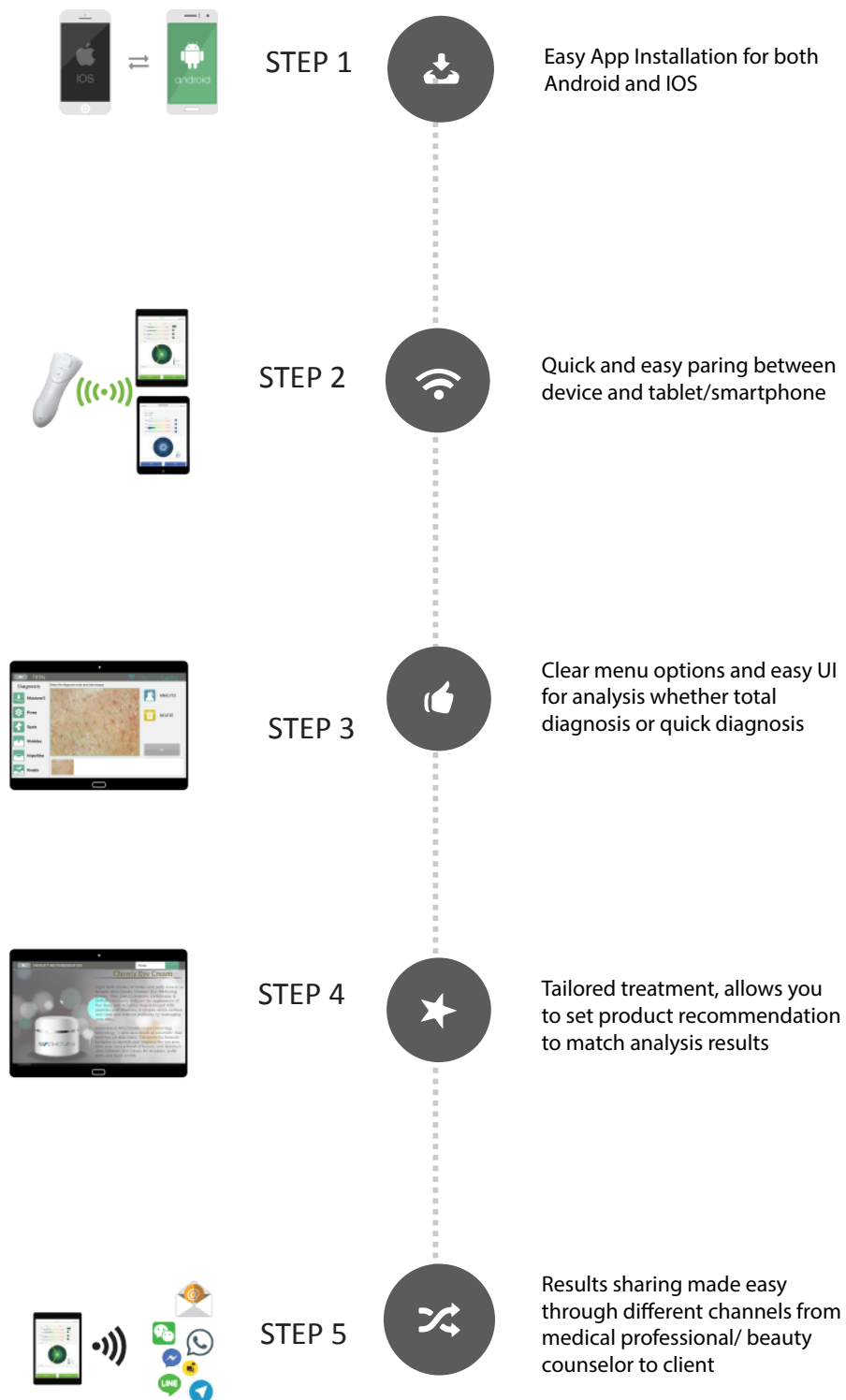
Other products:



The User Experience


The users interface is one of our priority, we made sure that it will be as easy as counting from 1 to 5.

dermo prime



Device Specification



Power supply	Input: 100-240V, 50-60Hz	Output: 12V,1-2A
Support protocol	USB 2.0 Wi-Fi	IEEE802.11b/g/n
Measurements (Skin)	Moisture, Pores, Spots, Wrinkles, Impurities, Keratin, Sebum	
Measurements (Hair)	Scalp condition, Hair density, Dead skin cells on scalp, Scalp sensitivity, Hair thickness, Hair loss	
Skin and Hair measurements only	5 megapixel images sensor, Various image modes, Composed of 20+ LED, Easy shooting and real-time streaming transfer	
Measuring method	Use measurement values from 0 to 99 subdivided for each analysis category	
Maximum size	Handset: 15 * 6 * 7 (cm)	Stand: 10.5 * 18.5 * 8 (cm)
Weight	Handset: about 150g	Stand: 515g
Certification		



www.chowis.com

CHOWIS
YOUR CHOICE OF DIAGNOSIS

CHOWIS CO LTD
A-1301-2, 184, Jungbu-daero, Giheung-gu, Yongin-si, Gyeonggi-do, Republic of Korea (17095)
Telephone: +82.31.706.7950 Fax: +82.31.272.7950 Email: mail@chowis.com