

The Beginning of  
IMPREGNABLE Wireless Security World

# WIRELESS CDMA SKYBRIDGE®

Wireless RealTime Transmission System for UHD & FHD Data  
Wireless Multi CHANNEL Communication for IoT World  
Wireless Data Communication powered by Solar light  
Wireless CDMA 'Guardian S' RF soc Technical Support  
for ODM/OEM & NRE Technical Support

The Bridge that connects all the world

 GLOBAL  
BRIDGE

[www.globalbridge.co.kr](http://www.globalbridge.co.kr)

# ● Specification of SkyBridge



Model	SB-100	SB-100W(Optional/OEM)	SB-200	SL-100(Repeater)
Image				
Wireless Standard	Binary CDMA	Binary CDMA	Binary CDMA	Binary CDMA
Modulation	CDMA+QPSK, DQPSK, 16/32/64QAM+TCM	CDMA+QPSK, DQPSK, 16/32/64QAM+TCM	CDMA+QPSK, DQPSK, 16/32/64QAM+TCM	CDMA+QPSK, DQPSK, 16/32/64QAM+TCM
Operating Frequency	2.4~2.483GHz	2.4~2.483GHz	2.4~2.483GHz	2.4~2.483GHz
	5.725~5.875GHz	5.725~5.875GHz	5.725~5.875GHz	5.725~5.875GHz
RF Antenna (Basic)	2.4~2.43GHz 14dbi Gain Patch	2.4~2.43GHz 18dbi Gain Patch	2.4~2.43GHz 14dbi Gain Patch	2.4~2.43GHz 18dbi Gain Patch
	5.725~5.875GHz 12dbi Gain Patch	5.725~5.875GHz 14dbi Gain Patch	5.725~5.875GHz 12dbi Gain Patch	5.725~5.875GHz 14dbi Gain Patch
Applicable Antenna (Optional)	18dbi Gain Patch/GRID/YAGI	18dbi Gain Patch	18dbi Gain Patch/GRID/YAGI	18dbi Gain Patch/GRID/YAGI
	24dbi Gain Patch/GRID/PARA/YAGI		24dbi Gain Patch/GRID/PARA/YAGI	24dbi Gain Patch/GRID/PARA/YAGI
	30dbi Gain GRID/PARA/YAGI		30dbi Gain GRID/PARA/YAGI	30dbi Gain GRID/PARA/YAGI
Antenna Exchangeable	available	One-bodied	available	available
Ethernet Interface	10 / 100 Base-T Ethernet Port	10 / 100 Base-T Ethernet Port	10 / 100 Base-T Ethernet Port	10 / 100 Base-T Ethernet Port
RF Output	10mW/MHz	10mW/MHz	10mW/MHz	10mW/MHz
I/O Port	RJ45 LAN	RJ45 LAN	RJ45 LAN	RJ45 LAN
PoE Input	N/L	N/L	PoE Input 1port form NVR/PoE Supplying	N/L
PoE Output	N/L	N/L	PoE output 2ports for PoE CAM/PoE Device	N/L
Reset	External Push button (Manual/Automatic selectable)	External Push button (Manual/Automatic selectable)	External Push button (Manual/Automatic selectable)	External Push button (Manual/Automatic selectable)
LED Indicator	POWER+LINK+SIGNAL 5steps	POWER+LINK+SIGNAL 5steps	POWER+LINK+SIGNAL 5steps	POWER+LINK+SIGNAL 5steps
Max. Effective Range	1km / 2.4GHz / 14dBi Antenna Based	1km / 2.4GHz / 14dBi Antenna Based	1km / 2.4GHz / 14dBi Antenna Based	3km / 2.4GHz / 14dBi Antenna Based
Power Supply	Power Adapter(DC 12V / 1A)	Power Adapter(DC 12V / 1A)	Power Adapter(DC48V / 1.5A)	Power Adapter(DC12V / 1.5A)
Power Consumption	1W	2W	30W	3W
Operating Temperature	-20C° ~ 70C°	-20C° ~ 65C°	-20C° ~ 70C°	-20C° ~ 65C°
DATA Port Support	RJ45	RJ45, PoE	RJ45, PoE	RJ45, PoE
Working Humidity	Max. 90% (Non Condensing)	Max. 90% (IP67, Weatherproof)	Max. 75%	Max. 90%
Size (WxDxH)	93 x 110 x 25mm	300 x 300 x 85mm	112 x 104 x 25mm	300 x 300 x 85mm
Weight(kg)	0.35kg	2.8kg	0.45kg	0.75kg
RSSI Level	Tx-Rx Real time Signal Display	Tx-Rx Real time Signal Display	Tx-Rx Real time Signal Display	Tx-Rx Real time Signal Display
SKYWATCH App	Android CMS APP Support	Android CMS APP Support	Android CMS APP Support	Android CMS APP Support
Additional Fuction	Auto Reset & Reboot	Auto Reset & Reboot	Auto Reset & Reboot	Auto Reset & Reboot
	DC Offset Auto Remover	DC Offset Auto Remover	DC Offset Auto Remover	DC Offset Auto Remover
	Auto CH Selection Control	Auto CH Selection Control	Auto CH Selection Control	Auto CH Selection Control

※This Standard System & Configuration are registered PCT Patents & each individual International Patents authorized.  
 ※All of designs and specifications can be changed for better quality & stability without any notice in advance.

■ manufacturer :

**Global Bridge Co.,Ltd**



[www.globalbridge.co.kr](http://www.globalbridge.co.kr)  
**A-1710, 30, Songdomirae-ro, Yeonsu-gu, Incheon**  
**21990, Republic of Korea**



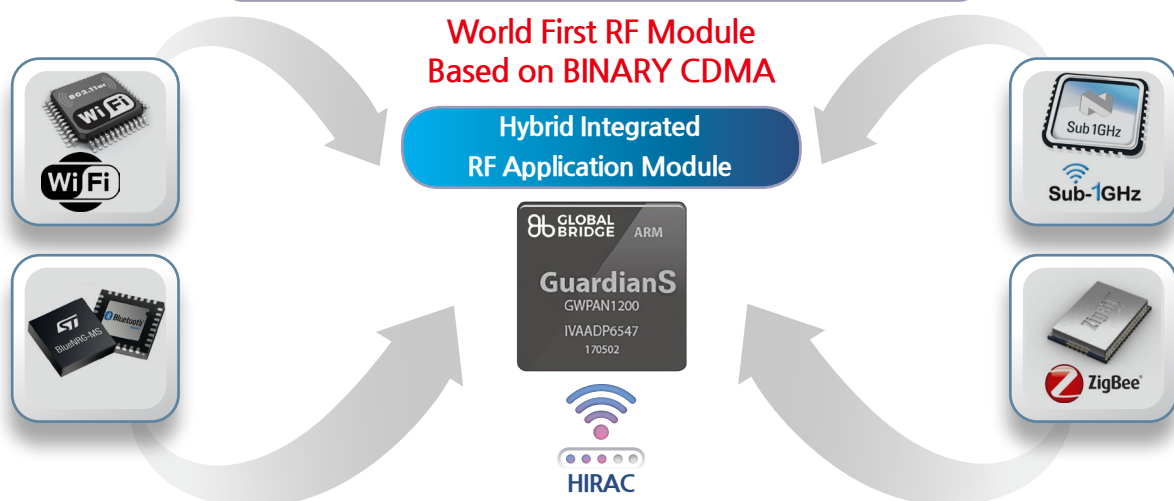
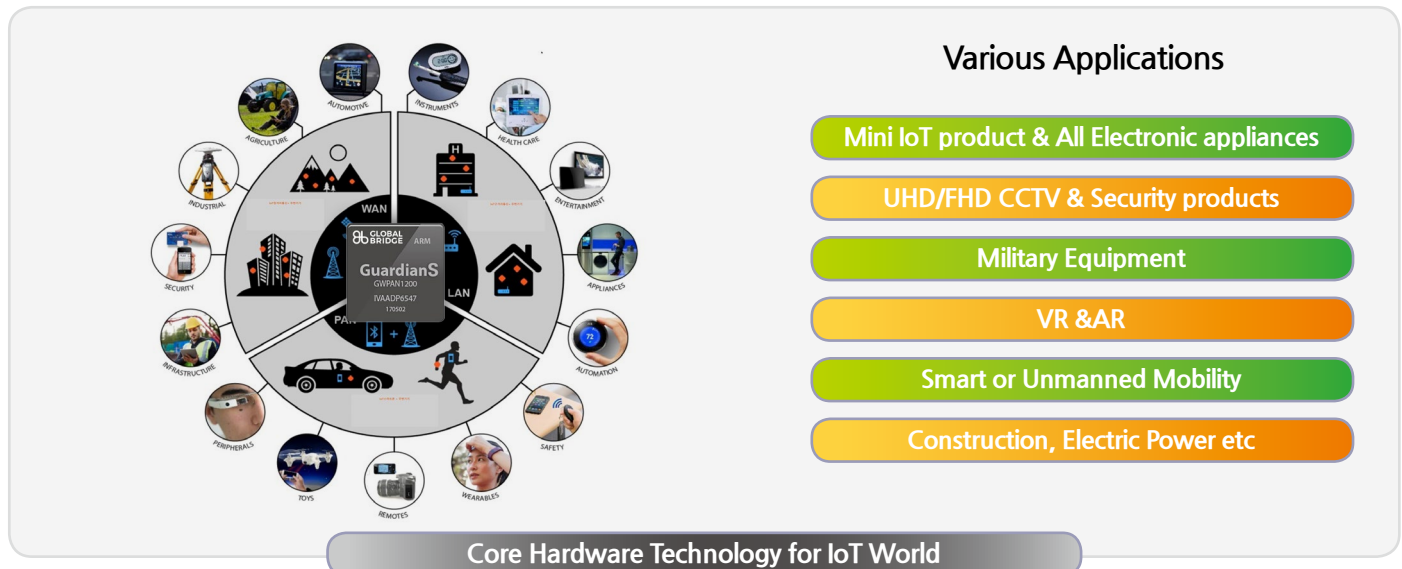
Tel : +82-32-715-8337/ Fax : 070-4333-7712  
 Email : [gbridgers@globalbridge.co.kr](mailto:gbridgers@globalbridge.co.kr)  
 KC : MSIP-CRM-KmW-SKYBRIDGE  
 FCC : ZAOJB-SKYBRIDGE

**Global Bridge Co.,Ltd**, based on the core technology of Binary CDMA, intends to lead the next generation of communication environment, IoT era, in which a variety of ICT are fusing together. Especially, with continuous R&D and global marketing, to open the new prospect of wireless Communication that can liaise people-people, people-things and things-things, we are going to be the bridge which connects all the world.



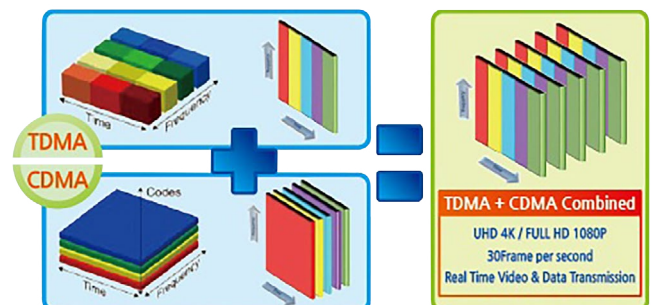
# The world First Wireless CDMA Technology based on IoT & Multi-Purpose RF SoC 'Guardian/S'

Powerful Security Algorithm AES256/ARIA256 + Code Division Multiple Access H/W



## What is Binary CDMA ?

TDMA technology is efficient in dividing the size and time of data to be transmitted in advance to stop data loading of each wireless channel, whereas, after dividing data into over 100 million codes, CDMA technology assigns individual number to each code. BINARY CDMA, as a fusion of the two technologies, can offer more stable and security-assured transmission and reception of multimedia data with high QoS by using unrivaled ISM band frequency freely even in poor wireless environment.



**BINARY CDMA**

- CDMA Wireless + Binary Modulation
- Less-Interference & No-Noise
- Strong Wireless Encryption Algorithm AES256/ARIA256
- Auto-Reboot & Auto-CH Selection



**MASS TDMA**

- High Speed + Mass Communication
- 2.4GHz +5.8GHz ISM band Solution
- Reliable Wireless Tx-Rx Solution
- Hardware-Based MAC Access Protocol

2.4GHz

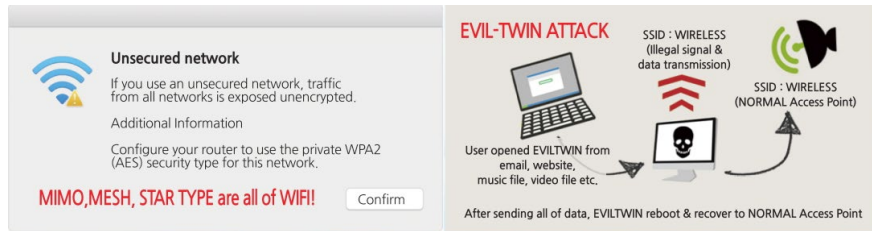
5.8GHz

## BINARY CDMA WIRELESS COMMUNICATION TECHNOLOGY

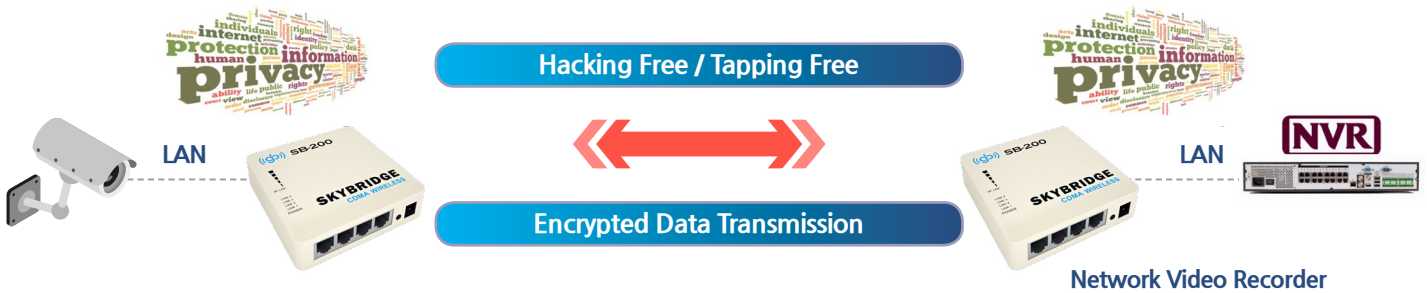
Professional Wireless Communication Technology for wireless connecting  
VIDEO + AUDIO + DATA among each Digital Wireless Products using CDMA + TDMA

# ● Advantage of Binary CDMA Wirelss Technology

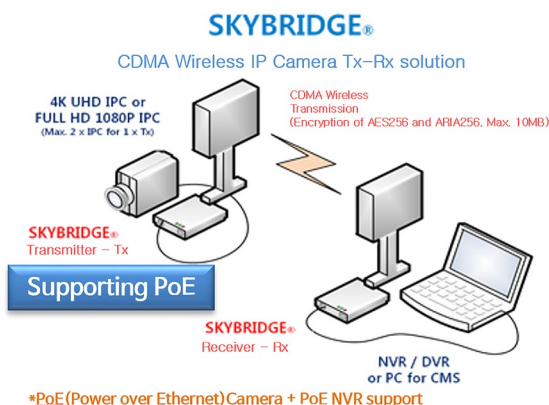
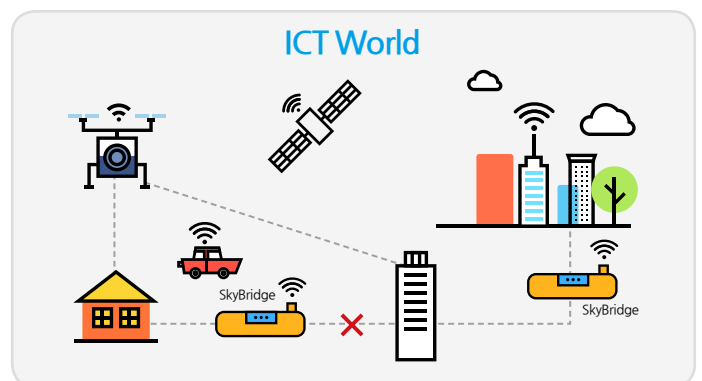
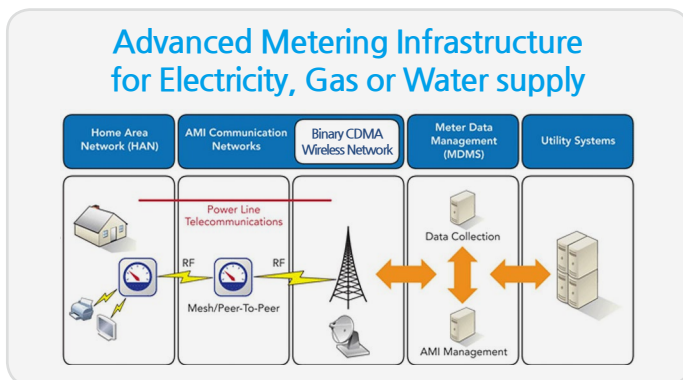
The existing WIFT technology is the open communication that is vulnernable to a number of hacking threats.



Binary CDMA(TDMA+CDMA) technology is the two-way communication of security in real time that encrypts all wireless data at the same time.



## ● Applicable Technology Areas



UHD/FHD VIDEO+DATA Long Range Wireless Transmission (Various IPC Support)

UHD 4K, FULL HD 1080, HD 720P/960P Support

Easy Installation & Construction / Replacement with Low Cost

Various Antenna(Optional) for each Wireless Circumstance

Strong Security Algorithm - ARIA256/AES256

Automatic Matching and Reset between Tx and Rx

Direct Connection with PoE device and PoE Camera in Low power consumption

The Beginning of  
IMPREGNABLE Wireless Security World

# WIRELESS CDMA SKYBRIDGE®



Wireless Realtime Transmission System for UHD & FHD Data  
Wireless Multi CHANNEL Communication for IoT World  
Wireless Data Communication powered by Solar light  
Wireless CDMA 'Guardian S' RF soc Technical Support  
for ODM/OEM & NRE Technical Support

**The Bridge that connects all the world**

**GLOBAL  
BRIDGE**

[www.globalbridge.co.kr](http://www.globalbridge.co.kr)



# ● Specification of SkyBridge



Model	SB-100	SB-100W(Optional/OEM)	SB-200	SL-100(Repeater)
Image				
Wireless Standard	Binary CDMA	Binary CDMA	Binary CDMA	Binary CDMA
Modulation	CDMA+QPSK, DQPSK, 16/32/64QAM+TCM	CDMA+QPSK, DQPSK, 16/32/64QAM+TCM	CDMA+QPSK, DQPSK, 16/32/64QAM+TCM	CDMA+QPSK, DQPSK, 16/32/64QAM+TCM
Operating Frequency	2.4~2.483GHz	2.4~2.483GHz	2.4~2.483GHz	2.4~2.483GHz
	5.725~5.875GHz	5.725~5.875GHz	5.725~5.875GHz	5.725~5.875GHz
RF Antenna (Basic)	2.4~2.43GHz 14dbi Gain Patch	2.4~2.43GHz 18dbi Gain Patch	2.4~2.43GHz 14dbi Gain Patch	2.4~2.43GHz 18dbi Gain Patch
	5.725~5.875GHz 12dbi Gain Patch	5.725~5.875GHz 14dbi Gain Patch	5.725~5.875GHz 12dbi Gain Patch	5.725~5.875GHz 14dbi Gain Patch
Applicable Antenna (Optional)	18dbi Gain Patch/GRID/YAGI	18dbi Gain Patch	18dbi Gain Patch/GRID/YAGI	18dbi Gain Patch/GRID/YAGI
	24dbi Gain Patch/GRID/PARA/YAGI		24dbi Gain Patch/GRID/PARA/YAGI	24dbi Gain Patch/GRID/PARA/YAGI
	30dbi Gain GRID/PARA/YAGI		30dbi Gain GRID/PARA/YAGI	30dbi Gain GRID/PARA/YAGI
Antenna Exchangeable	available	One-bodied	available	available
Ethernet Interface	10 / 100 Base-T Ethernet Port	10 / 100 Base-T Ethernet Port	10 / 100 Base-T Ethernet Port	10 / 100 Base-T Ethernet Port
RF Output	10mW/MHz	10mW/MHz	10mW/MHz	10mW/MHz
I/O Port	RJ45 LAN	RJ45 LAN	RJ45 LAN	RJ45 LAN
PoE Input	N/L	N/L	PoE Input 1port form NVR/PoE Supplying	N/L
PoE Output	N/L	N/L	PoE output 2ports for PoE CAM/PoE Device	N/L
Reset	External Push button (Manual/Automatic selectable)	External Push button (Manual/Automatic selectable)	External Push button (Manual/Automatic selectable)	External Push button (Manual/Automatic selectable)
LED Indicator	POWER+LINK+SIGNAL 5steps	POWER+LINK+SIGNAL 5steps	POWER+LINK+SIGNAL 5steps	POWER+LINK+SIGNAL 5steps
Max. Effective Range	1km / 2.4GHz / 14dBi Antenna Based	1km / 2.4GHz / 14dBi Antenna Based	1km / 2.4GHz / 14dBi Antenna Based	3km / 2.4GHz / 14dBi Antenna Based
Power Supply	Power Adapter(DC 12V / 1A)	Power Adapter(DC 12V / 1A)	Power Adapter(DC48V / 1.5A)	Power Adapter(DC12V / 1.5A)
Power Consumption	1W	2W	30W	3W
Operating Temperature	-20C° ~ 70C°	-20C° ~ 65C°	-20C° ~ 70C°	-20C° ~ 65C°
DATA Port Support	RJ45	RJ45, PoE	RJ45, PoE	RJ45, PoE
Working Humidity	Max. 90% (Non Condensing)	Max. 90% (IP67, Weatherproof)	Max. 75%	Max. 90%
Size (WxDxH)	93 x 110 x 25mm	300 x 300 x 85mm	112 x 104 x 25mm	300 x 300 x 85mm
Weight(kg)	0.35kg	2.8kg	0.45kg	0.75kg
RSSI Level	Tx-Rx Real time Signal Display	Tx-Rx Real time Signal Display	Tx-Rx Real time Signal Display	Tx-Rx Real time Signal Display
SKYWATCH App	Android CMS APP Support	Android CMS APP Support	Android CMS APP Support	Android CMS APP Support
Additional Fuction	Auto Reset & Reboot	Auto Reset & Reboot	Auto Reset & Reboot	Auto Reset & Reboot
	DC Offset Auto Remover	DC Offset Auto Remover	DC Offset Auto Remover	DC Offset Auto Remover
	Auto CH Selection Control	Auto CH Selection Control	Auto CH Selection Control	Auto CH Selection Control

※This Standard System & Configuration are registered PCT Patents & each individual International Patents authorized.  
 ※All of designs and specifications can be changed for better quality & stability without any notice in advance.

■ manufacturer :

**Global Bridge Co.,Ltd**



[www.globalbridge.co.kr](http://www.globalbridge.co.kr)  
**A-1710, 30, Songdomirae-ro, Yeonsu-gu, Incheon**  
**21990, Republic of Korea**



Tel : +82-32-715-8337 / Fax : 070-4333-7712  
 Email : [gbridgers@globalbridge.co.kr](mailto:gbridgers@globalbridge.co.kr)  
 KC : MSIP-CRM-KmW-SKYBRIDGE  
 FCC : 2AOJB-SKYBRIDGE

**Global Bridge Co.,Ltd**, based on the core technology of Binary CDMA, intends to lead the next generation of communication environment, IoT era, in which a variety of ICT are fusing together. Especially, with continuous R&D and global marketing, to open the new prospect of wireless Communication that can liaise people-people, people-things and things-things, we are going to be the bridge which connects all the world.

The Beginning of IMPREGNABLE Wireless Security World

# SKYBRIDGE® Products and Characteristics



## ONE-PUSH PAIRING

One second to pair wireless Tx-Rx automatically Quick & Easy Bands Switching (2.4/5.8GHz)

## Supporting PoE system (SB-200)

POE(Power Over Ethernet) Easy connection and Good Compatibility to various Digital devices

## A variety of Antennas applicable

Optimized Antenna available to various circumstances such as short/long range, urban/rural area and forest/shore

## LED Indicator for Operating condition

Easy to check all of device-working condition, Frequency strength, Network and so on.

## ● SKYBRIDGE® Configurations(Examples)



## ● Various Wireless Solution and Options

### SKYBRIDGE ® Wireless Solar-powered CCTV System

Solar rays  
Electricity  
Generation  
Package



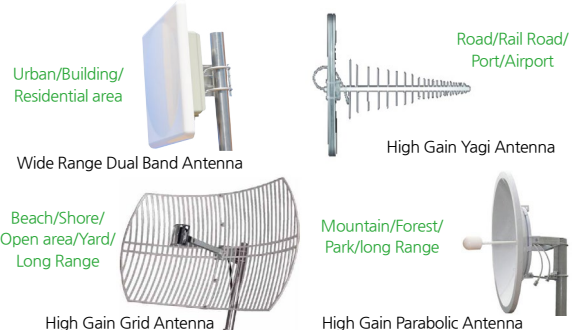
Green &  
High Efficiency

250W/320W

Battery Storage

Waterproof &  
Easy installation

### Various Antenna Applicable (Optional)



The beginning of Impregnable Security Wireless World

# SKYBRIDGE®

## SKYBRIDGE SB-100

### ■ Key Feature

- Wireless CDMA Transmitter & Receiver using ISM Band Frequency Range
- Max. 1km Wireless Video/Data Transmission with 14dBi antenna (18dBi / 24dBi or more)
- No need IP Address allocation for wireless
- Wide range Power tolerance from low power
- AES/ARIA(256bit) Algorithm for security
- Low Power Consumption, Compact Mini sized enclosure, Hand-off
- RESET Button for quick wireless pairing, Watchdog function
- High speed mobility support - Max. 150km/h (Exclusive Shark Antenna)
- WAN Support for applying all kinds of Network based equipment
- LED Indicator for Frequency strength & Network connection & Power
- 12VDC / 1A Power recommended / Portable Battery available



Binary CDMA Indoor Type ANT. Exchangeable

### ■ SKYBRIDGE SB-100 Specification

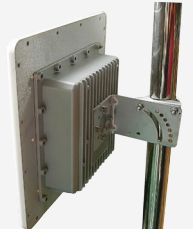
Wireless Type	Binary CDMA
RF Range	2.4~2.483Ghz, 5.725~5.875Ghz - ISM Band
Antenna Type	External Antenna available (optional)
RF Output Strength	10mW
Power Supply	DC12V
Power Consumption	1W
Size	93mm x 110mm x 25mm

## SKYBRIDGE SB-100PW

Only Optional/OEM

### ■ Key Feature

- Outdoor type Wireless CDMA Transmitter & Receiver
- Basically, all functions are the same with those of SB-100.
- Waterproof Antenna & Waterproof CDMA Box built-in
- AES/ARIA(256bit) Algorithm for security
- High Gain Antenna 18dBi built-in Dual Band
- Low Power Consumption, No need IP Address allocation, Hand-off
- Wide range Power tolerance from low power, Watchdog function
- Max. 2km Wireless Video/Audio/Data Transmission
- High speed mobility support - Max. 150km/h
- WAN Support for applying all kinds of Network based equipment
- Anti-rust Bracket with VESA Standard holes or other industrial holes
- Wide range Power tolerance from low power
- SKYWATCH APP Program support



Binary CDMA Indoor Type Antenna One-Bodied Type Waterproof

### ■ SKYBRIDGE SB-100PW Specification

Wireless Type	Binary CDMA
RF Range	2.4~2.483Ghz, 5.725~5.875Ghz - ISM Band
Antenna Type	Antenna One-Bodied Type
RF Output Strength	10mW
Power Supply	DC12V
Power Consumption	1W
Size	330mm x 330mm x 85mm

The beginning of Impregnable Security Wireless World

# SKYBRIDGE® Series

## SKYBRIDGE SB-200

### ■ Key Feature

- Wireless CDMA Transmitter & Receiver using ISM Band Frequency Range
- Interactive PoE-Power over Ethernet Direct I/F
- 1 x PoE Port for 1 PD and 2 x Ports for 2 PSEs
- 1 x PoE output Port and 2 x Ports for 2 Data
- High Gain Antenna 18dBi built-in Dual Band
- AES256(256bit) / ARIA256 Algorithm for security
- Max. 10km Wireless Video/Data Transmission available with various antenna - 14dBi / 18dBi / 24dBi or more (Patch / Grid / Parabolic)
- No need for IP Address allocation for wireless
- Wide range Power tolerance from low power
- Compact Mini sized enclosure, Hand-off
- NO need for extra PoE device
- High speed mobility support - Max. 150km/h (Exclusive Shark Antenna)
- LED Indicator for Frequency strength & Network connection & Power
- SKYWATCH APP Program support



Binary CDMA Indoor Type ANT. Exchangeable PoE

### ■ SKYBRIDGE SB-200 Specification

Wireless Type	Binary CDMA
RF Range	2.4~2.483Ghz, 5.725~5.875Ghz - ISM Band
Antenna Type	External Antenna available (optional)
RF Output Strength	10mW
Power Supply	DC48V
Power Consumption	30W
Size	105mm x 105mm x 25mm

## SKYLINK SL-100

### ■ Key Feature

- Outdoor type Wireless CDMA Transmitter & Receiver
- When SB-100 or SB-200 is connected together, Max. 3km Wireless Video/Data Transmission can be done.
- No need IP Address allocation for wireless
- Wide range Power tolerance from low power
- AES/ARIA(256bit) Algorithm for security
- Low Power Consumption, No need IP Address allocation, Hand-off
- Wide range Power tolerance from low power, Watchdog function
- High speed mobility support - Max. 150km/h
- WAN Support for applying all kinds of Network based equipment
- Wide range Power tolerance from low power, 12VDC / 5A recommended



Binary CDMA Outdoor Standalone Repeater

### ■ SKYBRIDGE SL-100 Specification

Wireless Type	Binary CDMA
RF Range	2.4~2.483Ghz, 5.725~5.875Ghz - ISM Band
Antenna Type	External Antenna Connection (Patch/Grid/Parabolic)
RF Output Strength	10mW
Power Supply	DC12V
Power Consumption	3W
Size	940mm x 178mm x 25mm

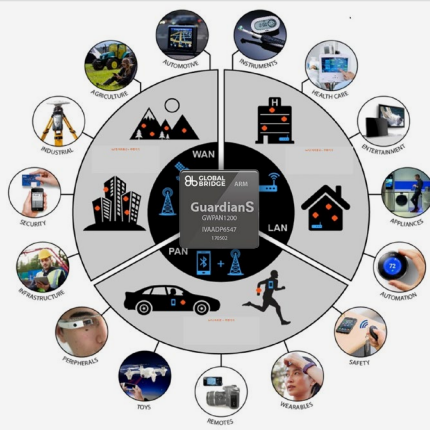


# WIRELESS CDMA SKYBRIDGE®

The world First  
CDMA Wireless Technology  
based on IoT & Multi-Purpose RF SoC  
'Guardian/Guardian S'

Powerful Security Algorithm AES256/ARIA256 + Code Division Multiple Access H/W

Wireless RealTime Transmission System for UHD & FHD Data  
Wireless Multi CHANNEL Communication for IoT World  
Technical Support for ODM/OEM & NRE



Core Hardware Technology for IoT World

## Various Applications

Mini IoT product & All Electronic appliances

UHD/FHD CCTV & Security products

Military Equipment

VR & AR

Smart or Unmanned Mobility

Construction, Electric Power etc

## BINARY CDMA

- CDMA Wireless + Binary Modulation
- Less-Interference & No-Noise
- Strong Wireless Encryption Algorithm & AES256/ARIA256
- Auto-Reboot & Auto-CH Selection

2.4GHz



## MASS TDMA

- High Speed + Mass Communication
- 2.4GHz + 5.8GHz ISM band Solution
- Reliable Wireless Tx-Rx Solution
- Hardware-Based MAC Access Protocol

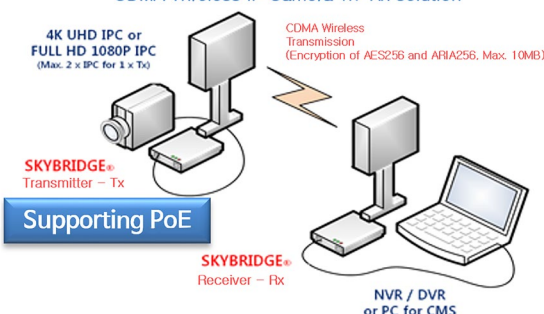
5.8GHz

## BINARY CDMA WIRELESS COMMUNICATION TECHNOLOGY

Professional Wireless Communication Technology for wireless connecting  
VIDEO + AUDIO + DATA among each Digital Wireless Products using CDMA + TDMA

## SKYBRIDGE®

CDMA Wireless IP Camera Tx-Rx solution



\*PoE(Power over Ethernet)Camera + PoE NVR support

UHD/FHD VIDEO+DATA Long Range Wireless Transmission (Various IPC Support)

UHD 4K, FULL HD 1080, HD 720P/960P Support

Easy Installation & Construction / Replacement with Low Cost

Various Antenna(Optional) for each Wireless Circumstance

Strong Security Algorithm - ARIA256/AES256

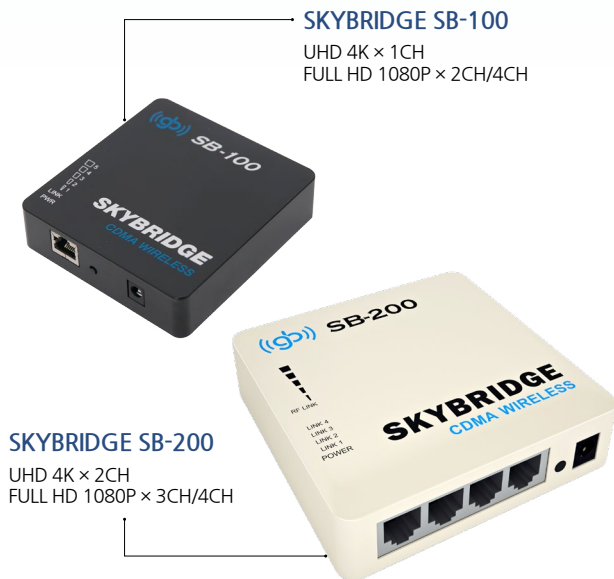
Automatic Matching and Reset between Tx and Rx

Direct Connection with PoE device and PoE Camera in Low power consumption

The Beginning of IMPREGNABLE Wireless Security World

# SKYBRIDGE® Products and Characteristic

**GLOBAL  
BRIDGE**



**SKYBRIDGE SB-100**  
UHD 4K × 1CH  
FULL HD 1080P × 2CH/4CH

**SKYBRIDGE SB-200**  
UHD 4K × 2CH  
FULL HD 1080P × 3CH/4CH

RESET

POE (IN)

ANT

LINK  
PWR

## ONE-PUSH PAIRING

One second to pair wireless Tx-Rx automatically Quick & Easy Bands Switching (2.4/5.8GHz)

## Supporting PoE system (SB-200)

POE(Power Over Ethernet) Easy connection and Good Compatibility to various Digital devices

## A variety of Antennas applicable

Optimized Antenna available to various circumstances such as short/long range, urban/rural area and forest/shore

## LED Indicator for Operating condition

Easy to check all of device-working condition, Frequency strength, Network and so on.

## SKYBRIDGE SB-100

### ■ Key Feature

- Indoor type Wireless CDMA Transmitter & Receiver using ISM Band Frequency Range
- Max. 1km Wireless Video/Data Transmission with 14dBi antenna (18dbi / 24dBi or more)
- No need IP Address allocation for wireless
- Wide range Power tolerance from low power
- AES256(256bit) / ARIA256 Algorithm for security
- Low Power Consumption, Compact Mini sized enclosure, Hand-off
- RESET Button for quick wireless pairing, Watchdog function
- High speed mobility support - Max. 150km/h (Exclusive Shark Antenna)
- WAN Support for applying all kinds of Network based equipment
- LED Indicator for Frequency strength & Network connection & Power
- 12VDC / 1A Power recommended / Portable Battery available

Binary  
CDMA

Indoor  
Type

ANT.  
Exchangeable

### ■ SKYBRIDGE SB-100 Specification

Wireless Type	Binary CDMA
RF Range	2.4~2.483Ghz, 5.725~5.875Ghz - ISM Band
Antenna Type	External Antenna available (optional)
RF Output Strength	10mW
Power Supply	12V
Power Consumption	1W
Size	93mm x 110mm x 25mm

※This Standard System & Configuration are registered PCT Patents & each individual International Patents authorized.  
※All of designs and specifications can be changed for better quality & stability without any notice in advance.

## SKYBRIDGE SB-200

### ■ Key Feature

- Indoor type Wireless CDMA Transmitter & Receiver using ISM Band Frequency Range
- Interactive PoE-Power over Ethernet Direct I/F
- 1 x PoE Port for 1 PD and 2 x Ports for 2 PSEs
- 1 x PoE output Port and 2 x Ports for 2 Data
- High Gain Antenna 18dBi built-in Dual Band
- AES256(256bit) / ARIA256 Algorithm for security
- Max. 1km Wireless Video/Data Transmission with 14dBi antenna (18dbi / 24dBi or more)
- No need for IP Address allocation for wireless
- Wide range Power tolerance from low power
- Low Power Consumption, Compact Mini sized enclosure, Hand-off
- NO need for extra PoE device
- High speed mobility support - Max. 150km/h (Exclusive Shark Antenna)
- LED Indicator for Frequency strength & Network connection & Power
- SKYWATCH APP Program support

Binary  
CDMA

Indoor  
Type

ANT.  
Exchangeable

PoE

### ■ SKYBRIDGE SB-200 Specification

Wireless Type	Binary CDMA
RF Range	2.4~2.483Ghz, 5.725~5.875Ghz - ISM Band
Antenna Type	External Antenna available (optional)
RF Output Strength	10mW
Power Supply	DC48V
Power Consumption	30W
Size	105mm x 105mm x 25mm

### ■ manufacturer :

**Global Bridge Co.,Ltd**

www.globalbridge.co.kr  
A-1710, 30, Songdomirae-ro, Yeonsu-gu, Incheon  
21990, Republic of Korea

Tel : +82-32-715-8337 / Fax : 070-4333-7712  
Email : gbridgers@globalbridge.co.kr  
KC : MSIP-CRM-KmW-SKYBRIDGE  
FCC : 2A0JB-SKYBRIDGE



Global Bridge Co.,Ltd, based on the core technology of Binary CDMA, intends to lead the next generation of communication environment, IoT era, in which a variety of ICT are fusing together. Especially, with continuous R&D and global marketing, to open the new prospect of wireless Communication that can liaise people-people, people-things and things-things, we are going to be the bridge which connects all the world.