

HYDRAULIC BREAKER GENUINE PARTS



Ask to Ace Hammer H.Q what is available now for hydraulic breaker parts.

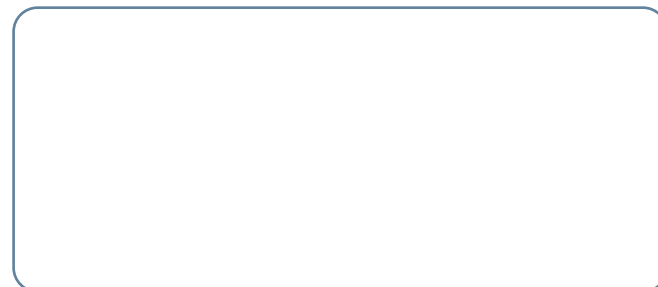


Hydraulic Attachment



Head Office
 37BL 1LOT, #625 Namchon-Dong, Namdong Ind.
 Complex, Namdong-Gu, Inchoinsi, Korea
TEL : +82-32-815-9614 **FAX :** +82-32-815-9615
E-mail : leo@acehammer.com/sales@acehammer.com
 acehydraulicbreaker@gmail.com
Web : www.acehammer.com

DISTRIBUTOR/AGENT



Ace Top/Side type breaker series
 Ace Silence (box) type breaker series
 Ace Backhoe Loader type breaker series
 Ace Skid Steer Loader type breaker series
 All parts for hydraulic breakers.



ACE HAMMER

HOME

After company setup in 2004, we had name in local market and soon our products are mostly welcomed by overseas customers. Though our starting was humble when we export our goods by OEM basis, our product's rumor has spread into world market slowly. Currently we have enjoyable relationship with our valuable customers, by our own brands, based on trustworthy. We share our interests with our customers, and we are ready to enlarge our business with new families in the world. We hope you will be a winner in this business field in the long run.



VISION & SPIRITS

VISION

GLOBAL PERFORMANCE IN TRUST

STRATEGY

OPTIMIZED BUSINESS STRUCTURE
MAXIMIZED COMPETITIVENESS
RELIABLE PRODUCTION SYSTEM

STRENGTHNESS

SUPERIOR POWER & EFFICIENCIES

- EXTENDED PISTON STROKE POWER & POSITIVE ALIGNMENT
- MAXIMIZED ENERGY TRANSFER TO CHISEL EFFICIENTLY

RELIABILITY

- LONG LIFE GUARANTEE : PROTECTED THREAD / MULTI-PHASE HEAT TREATMENT/ TEST BEFORE SHIPMENT
- PROTECT EXCAVATOR : EXCELLENT POWER TO WEIGHT RATIO/ REDUCE VIBRATION/ UNIQUE SUSPENSION / MINIMIZED OIL FLOW INTERRUPTION

EXTENDED DURABILITY

- MANUFACTURED WITH HIGH QUALITY ALLOY STEEL
- PRECISION WELDING BREAKER HOLDER
- WIDE DIAMETER TOOL WITH A DUST PROTECTION LIP SHIELDS DEBRIS

SIMPLE APPLICATION & EASY MAINTENANCE

- SIMPLE VALVE DESIGN
- TOOL BUSHING ENGINEERED FOR QUICK & EASY REPLACEMENT
- BOTTOM TIE ROD NUTS FOR EASY SERVICEABILITY
- DUAL RETAINER PINS PROVIDES PROPER ALIGNMENT & EASY TOOL REPLACEMENT
- AUTO GREASE SYSTEM AS AN OPTION



PRODUCTION PROCESS



RAW MATELAL IMPORT (Q.A)& CUT



FACING



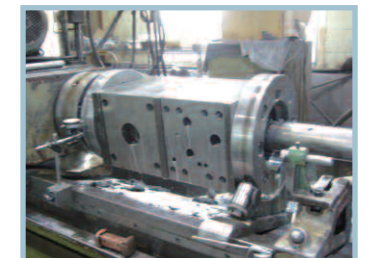
CNC WORKING



MCT PROCESS



HEAT TREATMENT



GRINDING PROCESS



BREAKING TEST BEFORE ASSEMBLY



ASSEMBLY PROCESS



PACKAGING & SHIPPING



Q • A : QUALITY ASSURANCE PROCESS IN FACTORY (CHECK FAILURE, TEST ETC.)
B • S : BEFORE SERVICE PROCESS (TO PREVENT TROUBLE BEFORE OPERATION)
A • S : AFTER SERVICE PROCESS



Applicable Carrier

AF135

Adaptable Base Carrier ranges

MOST POPULAR GRADE IN THE WORLD.

| Model Applicable Carrier | CAT | HYUNDAI HYUNDAI HYUNDAI | HITACHI | KOMATSU | JCB | KOBELCO | DOOSAN | NEW HOLLAND CONSTRUCTION | VOLVO | LIEBHERR |
|-----------------------------|---|--------------------------------------|--|----------------------------------|---|---------------------------|-------------------------------|-------------------------------|--|--------------------------------------|
| AB40 0.8~2.5 | | R16-7 | EX8 EX12 | PC10 | 801 | SK015 SK020 | 15 | E9 | EC14 EC15B | |
| AB45 1.2~3 | 301 | R22-7 | UE10, UE15 EX18 | PC20, 25, 30 | 8015 8016 | 15SR 20SR | | E16 E18 | EC20B | |
| AB55 2.5~4.5 | 302-5, 303-5 216, 226, 228 | R35-7 | ZX27U, 30U X27U, 30U, 35U | 30 | 1CX, 2CX, 803, 804, ROROT150 160/165, 170/185 | 25 30 30SR | 30 | E20 E22 E27 | EC30 EC25 ZL302C | |
| AB60 3~5.5 | 307, 303CR 304-5, 232, 236 242, 246, 248 | HSL650-7 R55-5 | ZX40U-2 ZX50UR-2 EX25, 30 | 45-1, 60-7, PC40 | 3CX, 4CX JS70, ROROT190 | 40SR 55SR | 50W 55 | E30 E35 | 3W EC35 EC45 | |
| AB70 4~7 | 305CR, 307, 416D 420, 426, 428, 430 438, E70B | R55-7, HSL850-7 R60W-7, R60-7 | EX60, 70, 75 ZX70, 75 | PC50/60 PC75/80, PW75 PC90 | 3CX, 4CX, ZL70, ROROT1105, 1110, 407/408/409, 4102X | SK050 SK60 | 70 | E40 E50 B90B, B100B | EC55, EC70, EW50, EW70, L20B/25B, L30B/35B, L40B/45B | A310 L506/507 508/509, 512/514 |
| AB75 6~9 | E70B 428 430 | R60 | EX70, 75 ZX70, 75 | PC75 PC80 | 3CX 4CX ZL70 | SK60 70SR | 70 80 | E80 E90 | EW70 BL74 L40B | S12 S14 A308 |
| AB85 7~12 | 307, 308, 931, 446B | R80-7 | UH04, EX70, 80, 90, WH04, ZX110 EX50, EX60 | PC80 | 4CX 416HT | SK60 70SR | 80W | E70SR E80SR B110B | BL74 L50D 612, 616B | A308 A310 |
| AB100 10~14 | 311, 312, 314, 205 E110B, 206, 515 206BFT, 212BFT | R130W R130LC-7 R140LC-7 | EX100 EX120 ZX120 | PC100 130-6, 150 PW130-6 | JS130, JS145, 805 806, 811, 812, 814 5C/W | 100 100W 115SR | 130W, 135W 140W, 150 | MH2.6 MH3.6 | EC130, EW130, SE130 SE130W, EW140/646 L60E, L70E | A312 A309 |
| AF120 14~18 | 317, M318, 320L 214B, 315, E120B 525B, 535B | R170(W)-7 180(W)LC-7 R190(W)LC | ZX160W EX150 160WD | PC160-6 180-6 PW170ES-6 | JS160, 180 JS150, 175 | 120LC 150LC 135SR | 170W-3 | E135B E150 | EC140B, EC150 EW150, EW160 L90E | A/R902 R317, R313, R312, A316 |
| AF135 16~25 | 545, 320 320B, 322 | R210LC-7 | ZX230 EX200, 220 | PC200-6 PC220-6 | JS220 JS240 JS200 | SK200-8 230LC | 225LC-7 220LC-5 | E175B MH5.6 E195B | EC210B | A900C, A904 A912, A922 R906 |
| AB140 20~26 | 320, 321 322(L) | R210LC-7 R250LC-7 | EX200, 220 240LC, ZX230 | PC200-6, PC240 PF55C-1 | JS220 JS240 JS200 | SK200-8 230LC 250LC | 300 258LC-7 | E195B MH6.6 MH8.6, E215 | EC210B EC240B | A/R942LIT R916 A914, A924 |
| AF150 26~33 | 229, 325 330(L), 235 | R290LC-7 R320LC-7 | EX270, 300 | PC250 PC300 | JS260 JS290 | 300LC 320 | 300LC-5 290LC-3 330LC-3 | E235 E245 | EC290B | R924, R926 R954, R961, R962 |
| AF160 30~42 | 5330(L), 345BL | R320LC-7 R360LC-7 | 400, ZX330 360LC | 340, 380LC-6 | JS330 JS360 | SK330-8 | 360LC-3 | E385 | 352 360B 460B | R944 R952 R954LIT |
| AF180 45~60 | 245, 365, 50ME 345, 350(L) | R420LC-7 R450LC-7 R500LC-7 | EX400 | PC400, 450-6 | JS450 JS460 | SK460-8 | 420, 400LC-3 500 | E485B | EC620 EC650 | A944 R962LIT R964 |
| AF230 70~100 | 3740 L, 390D 390D L | R800LC-9 R800LC-7A | ZX870LC-5 | PC750-7 PC800-7 | | SK850LC | DX700LC | | EC700 | |



TOP TYPE

| MODEL | Scale | AF135 |
|--------------------------|---------------------|---------|
| TOOL DIAMETER | mm/inch | 135/5.3 |
| CARRIER/EXCAVATOR WEIGHT | Ton | 18~24 |
| OPERATION WEIGHT(TOP) | kg | 1,740 |
| IMPACT ENERGY | Joule | 5,717 |
| SETTING PRESSURE | kgf/cm ² | 210 |
| REQUIRED OIL FLOW | LPM | 130~150 |
| OPERATING PRESSURE | kgf/cm ² | 160~180 |
| BLOW PER MINUTE | bpm | 350~690 |
| BACKHEAD N2 PRESSURE | bar | 6 |
| HOSE DIAMETER | inch | 1" |

BOX(SILENCE) TYPE

| MODEL | Scale | AF135S |
|--------------------------|---------------------|---------|
| TOOL DIAMETER | mm/inch | 135/5.3 |
| CARRIER/EXCAVATOR WEIGHT | Ton | 18~24 |
| OPERATION WEIGHT(TOP) | kg | 1,705 |
| IMPACT ENERGY | Joule | 5,717 |
| SETTING PRESSURE | kgf/cm ² | 210 |
| REQUIRED OIL FLOW | LPM | 130~150 |
| OPERATING PRESSURE | kgf/cm ² | 160~180 |
| BLOW PER MINUTE | bpm | 350~690 |
| BACKHEAD N2 PRESSURE | bar | 6 |
| HOSE DIAMETER | inch | 1" |



AF150

GRAB MORE PRODUCTIVITY!



TOP TYPE

| MODEL | Scale | AF150 |
|--------------------------|---------------------|---------|
| TOOL DIAMETER | mm/inch | 150/5.9 |
| CARRIER/EXCAVATOR WEIGHT | Ton | 29~35 |
| OPERATION WEIGHT(TOP) | kg | 2,420 |
| IMPACT ENERGY | Joule | 9,150 |
| SETTING PRESSURE | kgf/cm ² | 230 |
| REQUIRED OIL FLOW | LPM | 160~190 |
| OPERATING PRESSURE | kgf/cm ² | 160~180 |
| BLOW PER MINUTE | bpm | 240~320 |
| BACKHEAD N2 PRESSURE | bar | 6 |
| HOSE DIAMETER | inch | 1" |

BOX (SILENCE) TYPE

| MODEL | Scale | AF150S |
|--------------------------|---------------------|---------|
| TOOL DIAMETER | mm/inch | 150/5.9 |
| CARRIER/EXCAVATOR WEIGHT | Ton | 29~35 |
| OPERATION WEIGHT(TOP) | kg | 2,380 |
| IMPACT ENERGY | Joule | 9,150 |
| SETTING PRESSURE | kgf/cm ² | 230 |
| REQUIRED OIL FLOW | LPM | 160~190 |
| OPERATING PRESSURE | kgf/cm ² | 160~180 |
| BLOW PER MINUTE | bpm | 240~320 |
| BACKHEAD N2 PRESSURE | bar | 6 |
| HOSE DIAMETER | inch | 1" |



AF160

POWER! STRENGTH! UNBELIEVABLE ACTIVITY!



TOP TYPE

| MODEL | Scale | AF160 |
|--------------------------|---------------------|---------|
| TOOL DIAMETER | mm/inch | 160/6.3 |
| CARRIER/EXCAVATOR WEIGHT | Ton | 35~43 |
| OPERATION WEIGHT(TOP) | kg | 3,233 |
| IMPACT ENERGY | Joule | 11,320 |
| SETTING PRESSURE | kgf/cm ² | 230 |
| REQUIRED OIL FLOW | LPM | 160~190 |
| OPERATING PRESSURE | kgf/cm ² | 170~190 |
| BLOW PER MINUTE | bpm | 240~320 |
| BACKHEAD N2 PRESSURE | bar | 6 |
| HOSE DIAMETER | inch | 1" 1/4 |

BOX (SILENCE) TYPE

| MODEL | Scale | AF160S |
|--------------------------|---------------------|---------|
| TOOL DIAMETER | mm/inch | 160/6.3 |
| CARRIER/EXCAVATOR WEIGHT | Ton | 35~43 |
| OPERATION WEIGHT(TOP) | kg | 3,020 |
| IMPACT ENERGY | Joule | 11,320 |
| SETTING PRESSURE | kgf/cm ² | 230 |
| REQUIRED OIL FLOW | LPM | 160~190 |
| OPERATING PRESSURE | kgf/cm ² | 170~190 |
| BLOW PER MINUTE | bpm | 240~320 |
| BACKHEAD N2 PRESSURE | bar | 6 |
| HOSE DIAMETER | inch | 1" 1/4 |



AF160/AF180

OTHER RANGE OF BREAKERS

SEE THOSE MONSTER GRADE BREAKERS.

SELECT TO YOUR TASTE!



TOP TYPE

| ASSIFICATION/MODEL | Scale | AF165 |
|----------------------|--------------------|---------|
| OPERATION WEIGHT | kg | 2803 |
| TOTAL Box WEIGHT | kg | 3295 |
| REQUIRED OIL FLOW | L/MIN | 180~210 |
| SETTING PRESSURE | KGF/CM | 230 |
| OPERATION PRESSURE | 2 | 170~190 |
| BLOW SPEED | kg/cm ² | 200~400 |
| HOSE SIZE | BPM | 1 1/4 |
| BACKHEAD N2 PRESSURE | inch | 6 |
| ROD SIZE | bar | 165 |
| SUITABLE TONNAGE | mm | 40~48 |

No worry in rock / trench site anymore!
 Ace AF165 reinforced top version cover the whole range of brackets.
 Basic covering 40T, max covering 80T with hardox material in the
 bottom position. Our R&D team creates this new version with
 considering weight balances. Enjoy our new type breaker!



TOP TYPE/BOX (SILENCE) TYPE

| MODEL | Scale | AF180 | AF180S |
|--------------------------|---------------------|---------|---------|
| TOOL DIAMETER | mm/inch | 180/7.1 | 180/7.1 |
| CARRIER/EXCAVATOR WEIGHT | Ton | 44~60 | 44~60 |
| OPERATION WEIGHT(TOP) | kg | 4,250 | 4,250 |
| IMPACT ENERGY | Joule | 15,225 | 15,225 |
| SETTING PRESSURE | kgf/cm ² | 240 | 240 |
| REQUIRED OIL FLOW | LPM | 160~190 | 160~190 |
| OPERATING PRESSURE | kgf/cm ² | 170~190 | 170~190 |
| BLOW PER MINUTE | bpm | 240~310 | 240~310 |
| BACKHEAD N2 PRESSURE | bar | 11 | 11 |
| HOSE DIAMETER | inch | 1" 1/4 | 1" 1/4 |



REINFORCED VERSION

OTHER RANGE OF BREAKERS

| MODEL | Scale | AB45 | AB55 | AB70 | AB75 | AB85 | AB100 | AB120 | AB140 |
|--------------------------|---------------------|----------|---------|---------|---------|---------|---------|---------|---------|
| TOOL DIAMETER | mm/inch | 43/1.7 | 53/2.1 | 68/2.7 | 75/2.9 | 85/3.3 | 100/3.9 | 120/4.7 | 140/5.5 |
| CARRIER/EXCAVATOR WEIGHT | Ton | 1.3~1.8 | 2.0~3.5 | 3.5~5.5 | 3.5~7.0 | 5.0~7.5 | 12~18 | 16~20 | 25~35 |
| OPERATION WEIGHT(TOP) | kg | 112 | 150 | 330 | 355 | 460 | 795 | 1230 | 1936 |
| OPERATION WEIGHT(BOX) | kg | 134 | 158 | 346 | 445 | 600 | 925 | 1460 | 2198 |
| IMPACT ENERGY | Joule | 248 | 350 | 800 | 920 | 1515 | 2842 | 4537 | 7556 |
| SETTING PRESSURE | kgf/cm ² | 120 | 130 | 140 | 140 | 170 | 170 | 210 | 210 |
| REQUIRED OIL FLOW | LPM | 20~30 | 25~40 | 30~45 | 40~80 | 45~90 | 80~120 | 90~130 | 160~190 |
| OPERATING PRESSURE | kgf/cm ² | 80~110 | 90~120 | 95~130 | 100~130 | 110~160 | 150~170 | 160~180 | 160~180 |
| BLOW PER MINUTE | bpm | 600~1000 | 550~950 | 500~900 | 450~950 | 400~850 | 500~780 | 450~750 | 275~350 |
| BACKHEAD N2 PRESSURE | bar | 16 | 16 | 16 | 16 | 16 | 16 | 6 | 6 |
| HOSE DIAMETER | inch | 1/2" | 1/2" | 1/2" | 1/2" | 3/4" | 3/4" | 1" | 1" |

BACKHOE / SKID STEER LOADER

BREAKER APPLICATION BY JOBSITES

SELECT FOR YOUR LIGHT FLEETS

PROPER BREAKER MATCHING BY JOBSITES



BACKHOE LOADER BREAKERS

| MODEL | Scale | AB55 | AB60 | AB70 | AB75 |
|--------------------------|---------------------|---------|---------|---------|---------|
| TOOL DIAMETER | mm/inch | 53/2.1 | 58/2.3 | 68/2.7 | 75/2.9 |
| CARRIER/EXCAVATOR WEIGHT | Ton | 2.0~3.5 | 3.0~4.5 | 3.5~5.5 | 3.5~7.0 |
| OPERATION WEIGHT(TOP) | kg | 206 | 216 | 308 | 390 |
| OPERATION WEIGHT(BOX) | kg | 226 | 236 | 330 | 460 |
| IMPACT ENERGY | Joule | 350 | 600 | 800 | 920 |
| SETTING PRESSURE | kgf/cm ² | 130 | 140 | 140 | 140 |
| REQUIRED OIL FLOW | LPM | 25~40 | 30~40 | 30~45 | 40~80 |
| OPERATING PRESSURE | kgf/cm ² | 90~120 | 90~130 | 95~130 | 100~130 |
| BLOW PER MINUTE | bpm | 550~950 | 550~900 | 500~900 | 450~950 |
| BACKHEAD N2 PRESSURE | bar | 16 | 16 | 16 | 16 |
| HOSE DIAMETER | inch | 1/2" | 1/2" | 1/2" | 1/2" |

SKID STEER LOADER BREAKER

| MODEL | Scale | AB55 | AB60 | AB70 |
|--------------------------|---------------------|---------|---------|---------|
| TOOL DIAMETER | mm/inch | 53/2.1 | 58/2.3 | 68/2.7 |
| CARRIER/EXCAVATOR WEIGHT | Ton | 2.0~3.5 | 3.0~4.5 | 3.5~5.5 |
| OPERATION WEIGHT(TOP) | kg | 256 | 236 | 343 |
| OPERATION WEIGHT(BOX) | kg | 226 | 269 | 365 |
| IMPACT ENERGY | Joule | 350 | 600 | 800 |
| SETTING PRESSURE | kgf/cm ² | 130 | 140 | 140 |
| REQUIRED OIL FLOW | LPM | 25~40 | 30~40 | 30~45 |
| OPERATING PRESSURE | kgf/cm ² | 90~120 | 90~130 | 95~130 |
| BLOW PER MINUTE | bpm | 550~950 | 550~900 | 500~900 |
| BACKHEAD N2 PRESSURE | bar | 16 | 16 | 16 |
| HOSE DIAMETER | inch | 1/2" | 1/2" | 1/2" |



| | | | LB | MB | HB | |
|-------------------------|---------------------------------------|--|----|----|----|--|
| Mining & quarrying | Preliminary works | Overburden removal Bench, road & ramp levelling Roof, face & rib scaling | ● | ● | ○ | |
| | Secondary breaking | Boulder reduction in rock pile Removing blockages at crushing systems | ○ | ● | ● | |
| | Primary rock breaking | Selective rock breaking Blast-free mining | - | ○ | ● | |
| Demolition & renovation | Masonry structures | Brickwork Natural stone Autoclaved aerated concrete | ● | ○ | - | |
| | Concrete structures | Lightweight concrete Standard concrete Heavyweight concrete | ● | ● | ○ | |
| | Composite steel & concrete structures | Steel-reinforced concrete Prestressed concrete Fibre-reinforced concrete | ○ | ● | ● | |
| | Pavements | Asphalt Concrete Composite surfaces | ● | ● | ● | |
| Construction | Earthworks | Trenching Pit building Ground excavation | ○ | ● | ● | |
| | Tunneling | Tunnel driving Roof, face & rib scaling Floor levelling | ○ | ● | ● | |
| | Dredging | Canal deepening & extension Dock deepening & extension | ○ | ○ | ● | |
| | Gardening & Landscaping | Fencing Ground excavation Rock breaking | ● | ○ | - | |
| | Foundation works | Ground levelling | - | ○ | ● | |
| | Building construction | Foundation pile driving | - | ○ | ● | |
| Metallurgical industry | Slag recycling | Boulder reduction in slag heap Removing blockages at crushing systems | ○ | ● | ● | |
| | Cleaning & debricking | Ladles Converter mouths Kilns | ● | ○ | - | |

● Optional ○ Suitable - Unsuitable
LB (LIGHT BREAKER : AB40-AB100), MB (MIDDLE RANGE BREAKER : AF120-AB140), HB (HEAVY BREAKER : AF150 UP)

JOBSITE PRODUCTION OUTPUT



JOBSITE PRODUCTION OUTPUT

| MODEL | TEARED OFF STONE | STEEL BAR CONCRETE | WITHOUT BAR CONCRETE |
|--------|------------------|--------------------|----------------------|
| AB 70 | 15~30 | 20~40 | 25~50 |
| AB 85 | 20~40 | 30~50 | 40~70 |
| AB 100 | 60~120 | 100~200 | 120~250 |
| AB 125 | 100~200 | 200~300 | 300~450 |
| AF 135 | 120~240 | 240~360 | 360~550 |
| AF 150 | 200~350 | 320~500 | 500~700 |
| AF 160 | 300~500 | 450~650 | 700~900 |
| AF 180 | 400~600 | 600~800 | 800~1,000 |

M3/ 1DAY 8 HOURS WORKING BASE

IMPACT ENERGY CLASS

| MODEL | IMPACT POWER(J.) | CHISEL DIA(MM) |
|--------|------------------|----------------|
| AB 40 | 160 | 40 |
| AB 45 | 248 | 45 |
| AB 55 | 350 | 53 |
| AB 70 | 800 | 68 |
| AB 75 | 920 | 75 |
| AB 85 | 1,515 | 85 |
| AB 100 | 2,842 | 100 |
| AB 120 | 4,537 | 120 |
| AB 135 | 5,717 | 135 |
| AB 140 | 7,556 | 140 |
| AF 150 | 9,150 | 150 |
| AF 160 | 11,320 | 160 |
| AF 180 | 15,225 | 180 |



STANDARD ACCESSORIES

STANDARD ACCESSORIES



N2 Gas Charging Kit 1 Set



1 Tool Box



1 N2 Gas bottle



1 Top bracket with pin bush set



2 chisels



2 Spring hoses



1 working suit



1 Spare seal kit



Service Manual

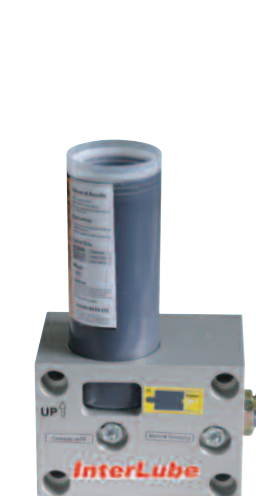
above standard service parts are contains in 1 unit of breaker box.

OPTIONAL DEVICE

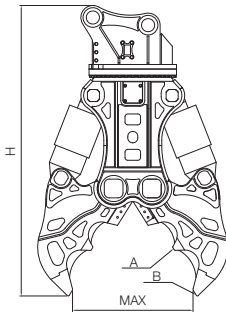
RSP(Recommended Spare Parts) Kits

For long life of breaker & proper working, it is very important to replace new parts at the right time. Keep RSP stock for your easy maintenance & easy reaction on customer supports.

Auto lube system



CRUSHER Rotating Type



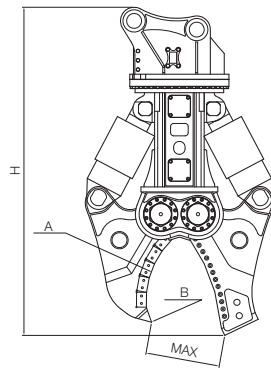
| Description | AC150-II | AC200-II | AC300-II | AC400-II |
|--|------------------|------------------|------------------|------------------|
| Weight (kg) | 1,120 | 1,680 | 2,800 | 4,300 |
| Overall Length (H/mm) | 1,300 | 1,950 | 2,600 | 2,750 |
| Max. Opening Width (mm) | 800 | 900 | 1,100 | 1,300 |
| Crushing force-Middle section (A) (ton) | 55 | 90 | 140 | 160 |
| Crushing force-End section (B) (ton) | 30 | 60 | 95 | 105 |
| Operating pressure (kg/cm ²) | 300 | 300 | 320 | 320 |
| Rotation Hydraulic Motor | 360° / 36~40 lpm | 360° / 36~40 lpm | 360° / 36~40 lpm | 360° / 36~40 lpm |
| Carrier (ton) | 12 ~ 15 | 18 ~ 22 | 28 ~ 31 | 34 ~ 39 |

※ Above specification can be changed without prior notice to improve performance.

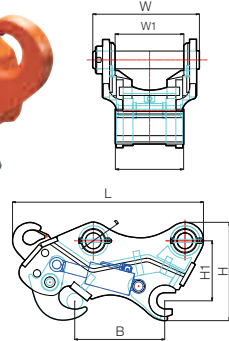
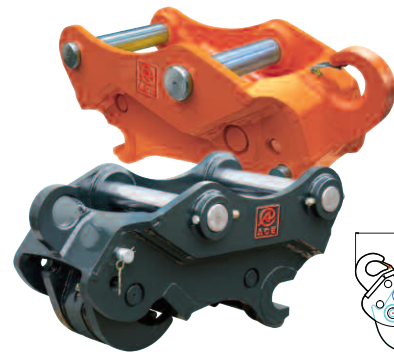
SHEAR Beam Cutter

| Description | AS200-II | AS300-II | AS400-II |
|--|------------------|------------------|------------------|
| Weight (kg) | 1,750 | 2,560 | 4,250 |
| Overall Length(H/mm) | 2,000 | 2,420 | 2,550 |
| Max. Opening Width (mm) | 522 | 600 | 750 |
| Shear force-Middle section (A) (ton) | 130 | 200 | 240 |
| Shear force-End section (B) (ton) | 60 | 105 | 130 |
| Operating pressure (kg/cm ²) | 300 | 320 | 320 |
| Rotation / Hydraulic Motor | 360° / 36~40 lpm | 360° / 36~40 lpm | 360° / 36~40 lpm |
| Carrier (ton) | 18 ~ 22 | 28 ~ 31 | 34 ~ 39 |

※ Above specification can be changed without prior notice to improve performance.



Quick-Coupler PULLING/PUSHING TYPE



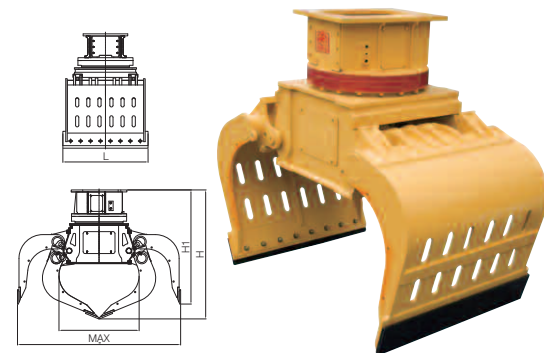
| Description | Model | AQ50 | AQ140 | AQ200 | AQ300 | AQ350 | AQ400 | AQ500 |
|--------------------|-------|---------|---------|---------|-------------|-------------|-------------|-------------|
| Carrier | ton | 5-6 | 11-13 | 18-22 | 23-30 | 31-36 | 37-42 | 43-50 |
| L | mm | 585-510 | 824 | 970 | 1,076-1,094 | 1,057-1,072 | 1,208-1,238 | 1,253-1,285 |
| H | mm | 293 | 391 | 491 | 552-557 | 587-610 | 613-627 | 628-662 |
| H1 | mm | 179 | 243 | 302 | 340 | 355-371 | 365-383 | 380-401 |
| W | mm | 259-269 | 408-423 | 477-496 | 535-584 | 586-624 | 624-664 | 661-726 |
| W1 | mm | 155-170 | 260-275 | 306-334 | 351-411 | 385-432 | 401-443 | 431-473 |
| W2 | mm | 153-168 | 257-273 | 303-329 | 347-407 | 382-429 | 429-438 | 429-468 |
| B | mm | 255-290 | 375-400 | 450-480 | 487-540 | 510-580 | 533-600 | 556-612 |
| Weight | kg | 60-70 | 170-190 | 330-340 | 510-528 | 630-636 | 670-755 | 760-890 |
| Operating Pressure | bar | 40~350 | | | | | | |
| Flow Rate | lpm | 10~30 | | | | | | |

※ Above specification can be changed without prior notice to improve performance.

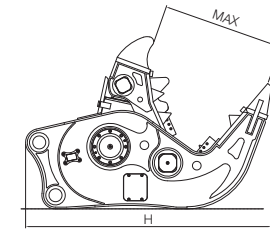
DEMOLITION GRAPPLE

| MODEL | Carrier (ton) | H (mm) | H1 (mm) | L (mm) | MAX (mm) | MIN (mm) | Oil Pressure (bar) | Weight (kg) |
|-------|---------------|--------|---------|--------|----------|----------|--------------------|-------------|
| DG140 | 9-13 | 1,457 | 1,295 | 910 | 1,803 | 875 | 200~280 | 1,150 |
| DG200 | 18-24 | 1,619 | 1,432 | 1,070 | 2,049 | 1,006 | | 1,500 |
| DG300 | 28-32 | 1,691 | 1,493 | 1,130 | 2,172 | 1,067 | | 1,700 |

※ Above specification can be changed without prior notice to improve performance.



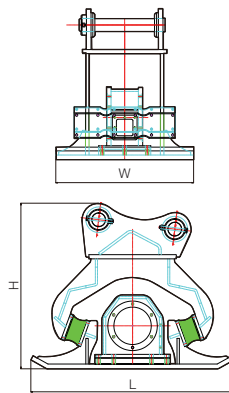
CRUSHER Fixed Type



| Description | AT200-I | AT300-I | AT400-I |
|--|---------|---------|---------|
| Weight (kg) | 1,750 | 3,350 | 3,400 |
| Overall width (H/mm) | 1,950 | 2,265 | 2,400 |
| Max. Opening Width (mm) | 915 | 1,100 | 1,300 |
| Thrust force (ton) | 103 | 133 | 157 |
| Operating pressure (kg/cm ²) | 300 | 320 | 320 |
| Carrier (ton) | 18 ~ 22 | 28 ~ 31 | 34 ~ 39 |

※ Above specification can be changed without prior notice to improve performance.

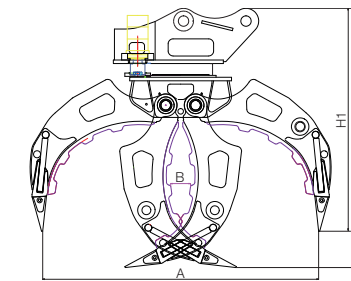
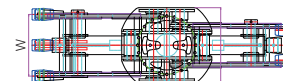
Compactor



| Model | ABCP50 | ABCP140 | ABCP200 | ABCP300 |
|----------------------|----------------|------------------|------------------|------------------|
| Carrier (ton) | 4-6 | 9-13 | 18-22 | 28-32 |
| Compactibility (ton) | 4.5 | 7 | 13 | 15 |
| Vib.(npm) | 600~3,000 | 600~2,000 | 600~2,000 | 600~2,000 |
| Flow Rate (cc/rev) | 30 | 63 | 80 | 80/90 |
| Pressure(Bar) | 100~150 | 150~200 | 150~210 | 150~210 |
| Max. Press (bar) | 180 | 250 | 250 | 250 |
| L x W x T(mm) | 915 x 530 x 25 | 1,145 x 700 x 28 | 1,250 x 850 x 30 | 1,350 x 950 x 32 |
| H (mm) | 745 | 850 | 975 | 1,050 |
| Rubber pad | 4 | 4 | 4 | 6 |
| Weight (kg) | 380 | 650 | 950 | 1,150 |

※ Above specification can be changed without prior notice to improve performance.

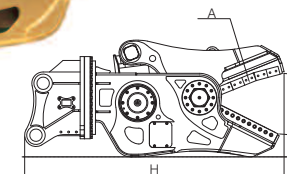
Rotating type Wood Grapple



| Model | Carrier | A | B | W | H | H1 | Wt | Cylinder Oil Pressure | Cylinder Setting Pressure | Flow Rate | Hyd. Motor | Max. Torque | Max. Inlet Pressure | Max. Speed | Max. Flow Rate | Tooth |
|-------|---------|-------|-----|-----|-------|-------|-------|-----------------------|---------------------------|-----------|------------|-------------|---------------------|------------|----------------|------------------|
| Unit | ton | mm | mm | mm | mm | mm | kg | kg/cm ² | kg/cm ² | l/min | | daNm | bar | rpm | l/min | Number |
| AG50 | 4-6 | 1,280 | 100 | 430 | 1,360 | 1,190 | 365 | 110-200 | 250 | 30-50 | MR315CU | 61 | 225 | 240 | 75 | MX40-1070-05031 |
| AG140 | 9-13 | 1,700 | 120 | 507 | 1,625 | 1,400 | 850 | 150-220 | 250 | 90-120 | MT500 | 160 | 300 | 285 | 150 | RX140-61M4-31210 |
| AG200 | 18-22 | 2,100 | 250 | 620 | 2,045 | 1,740 | 1,960 | 160-240 | 260 | 100-150 | | | | | | DX220-K1000344A |
| AG300 | 28-32 | 2,345 | 268 | 665 | 2,210 | 1,870 | 2,100 | 160-240 | 260 | 130-200 | | | | | | DX300-713-00054A |

※ Above specification can be changed without prior notice to improve performance.

SHEAR Straight Cutter



| Description | AS200-I | AS300-I | AS400-I |
|--|------------------|------------------|------------------|
| Weight (kg) | 1,750 | 2,800 | 3,500 |
| Overall Length (H/mm) | 2,000 | 2,520 | 2,800 |
| Max. Opening Width (mm) | 500 | 590 | 650 |
| Shear force-Middle section (A) (ton) | 195 | 206 | 280 |
| Operating pressure (kg/cm ²) | 300 | 320 | 320 |
| Rotation / Hydraulic Motor | 360° / 36~40 lpm | 360° / 36~40 lpm | 360° / 36~40 lpm |
| Carrier (ton) | 18 ~ 22 | 28 ~ 31 | 34 ~ 39 |

※ Above specification can be changed without prior notice to improve performance.