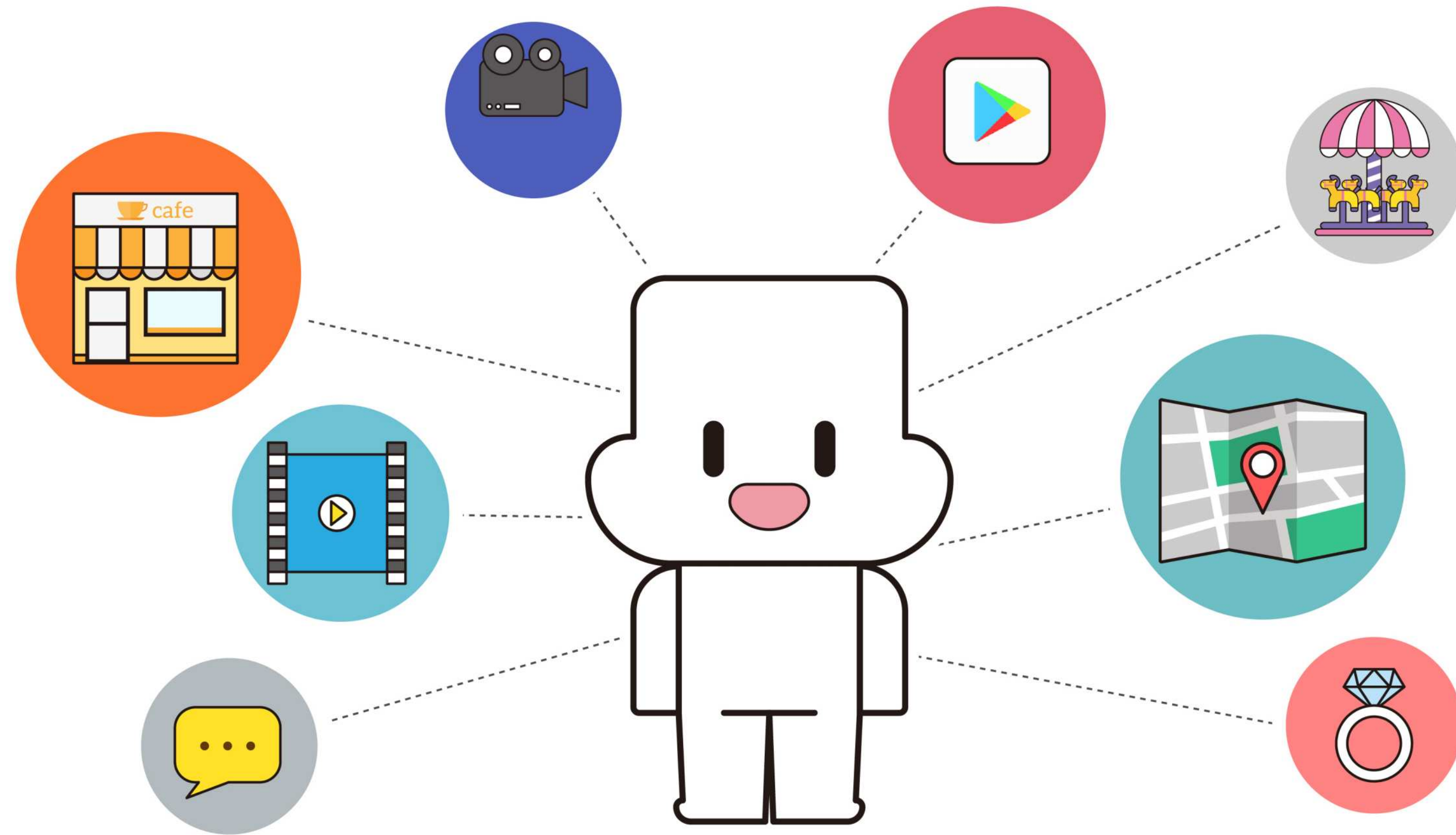


# Torymong Guide map/Leaflet

# 1. Company Introduction



We are a cultural contents company that creates a new culture with various contents using the O2O platform character "Torymong".

Torymong Guide Map/Leaflet

# Product Introduction

## 2.Product Introduction



Paper Toy



Guide Map&Leaflet



토리몽 가이드맵/리플렛

After using the guide map&leaflet, you can get the Torymong paper toy of the concept.

# 2.Product Introduction

Product Detail Image

## [Outside] - Information Delivery



Front

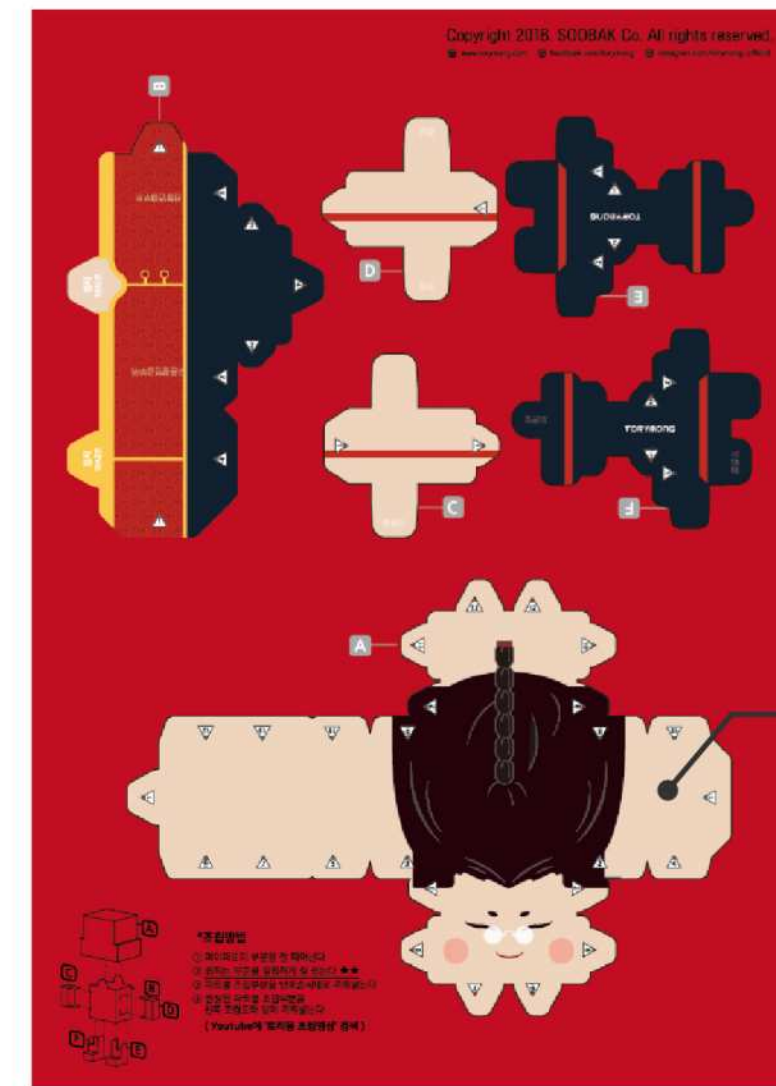


Back

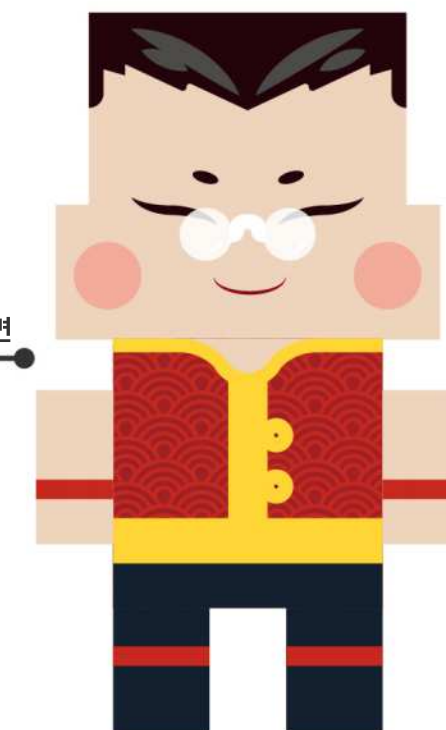


Open

## [Inside] - Paper Toy



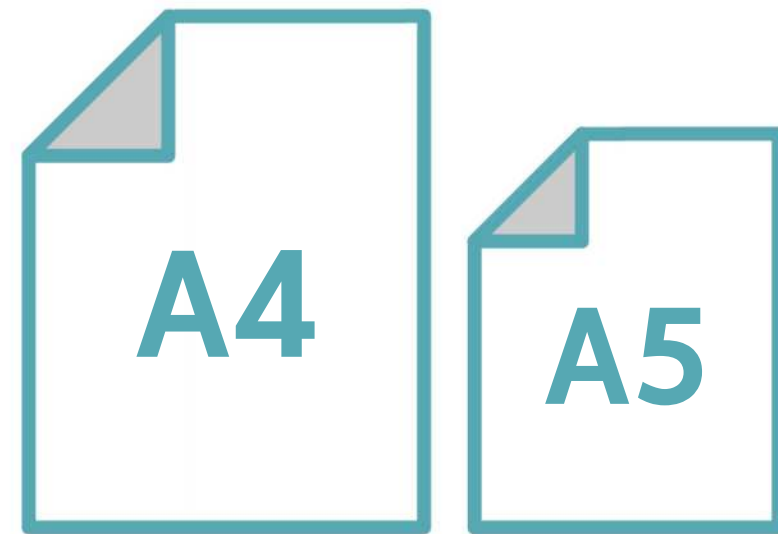
Open



Paper toy

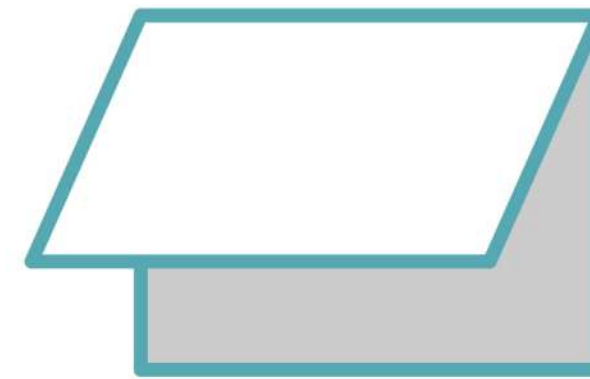
After using the guide map, you can get the Torymong paper toy of the concept.

## 2.Product Introduction



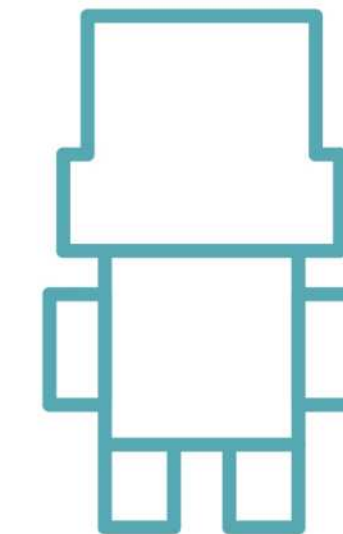
### 1)Size

We have A4 • A5 size



### 2)Folder style design

Stylish design delivers  
clearer information



### 3)Paper Toy

Providing hands-on  
content called “paper toy”  
rather than simple  
information delivery

# 2.Product Introduction : Customizing Design



Customized design for your company is available.

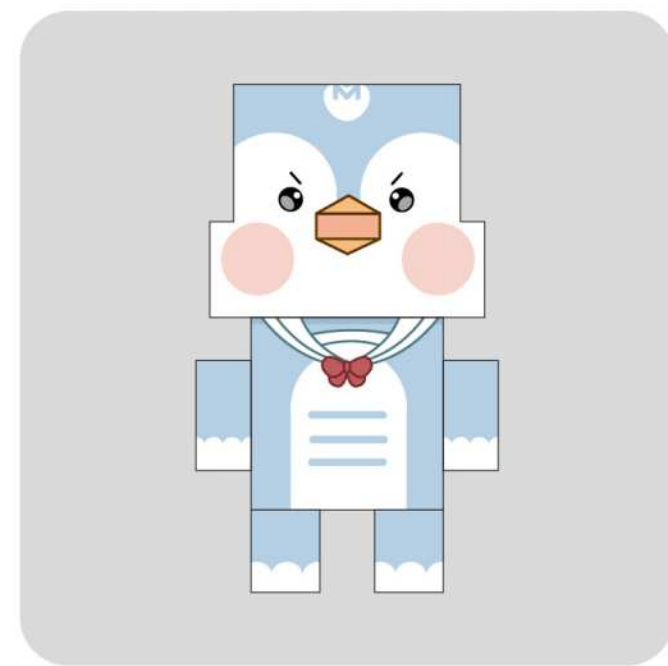
## 2.Product Introduction : Production System

### One stop production system

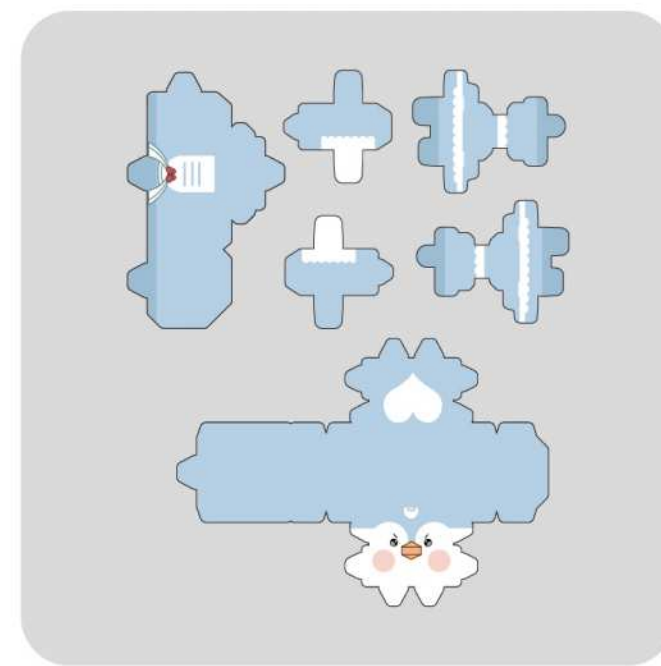
A-Z production from character planning to production and distribution



Image creation



Custom Character Planning



Paper toy work



Production



Uses



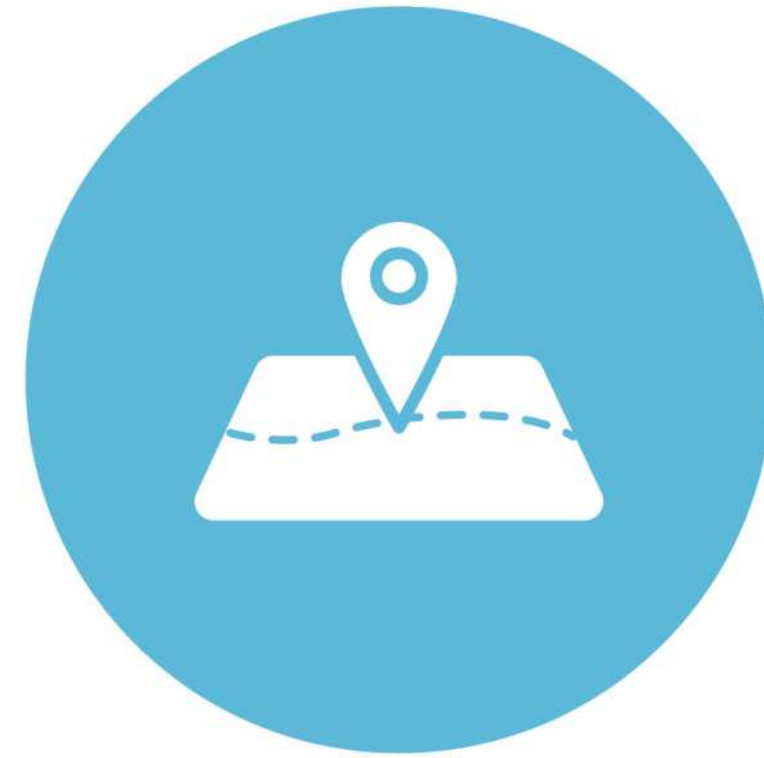
Torymong Guide Map/Leaflet

# Expected Results

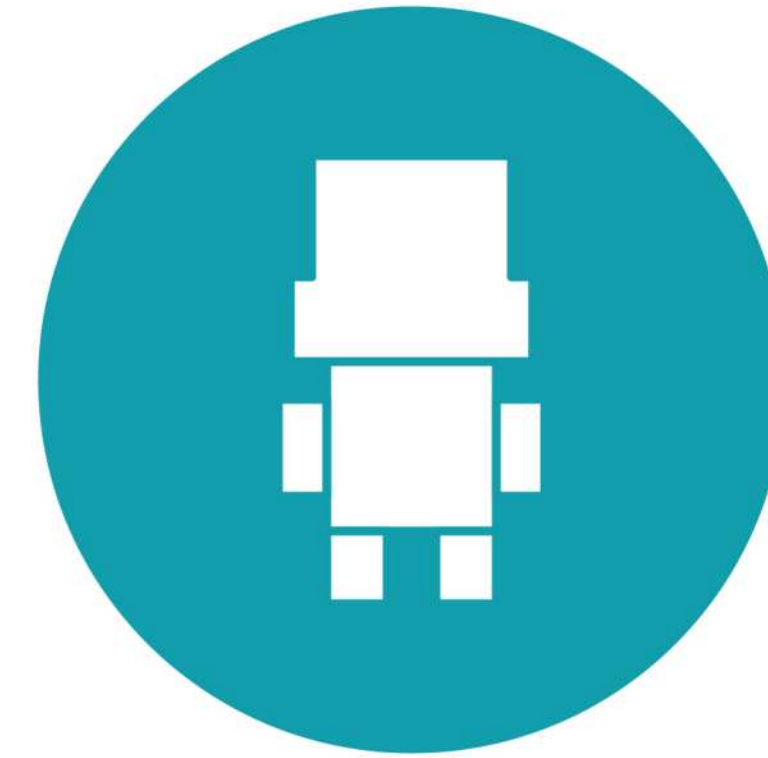
# 3.Expected Results



Positive image promotion and promotion through recycling



New marketing progress through special items



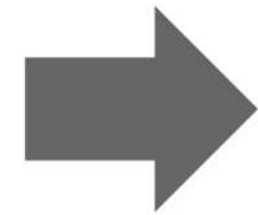
The item satisfying consumers through paper toys

# 3. Expected Results

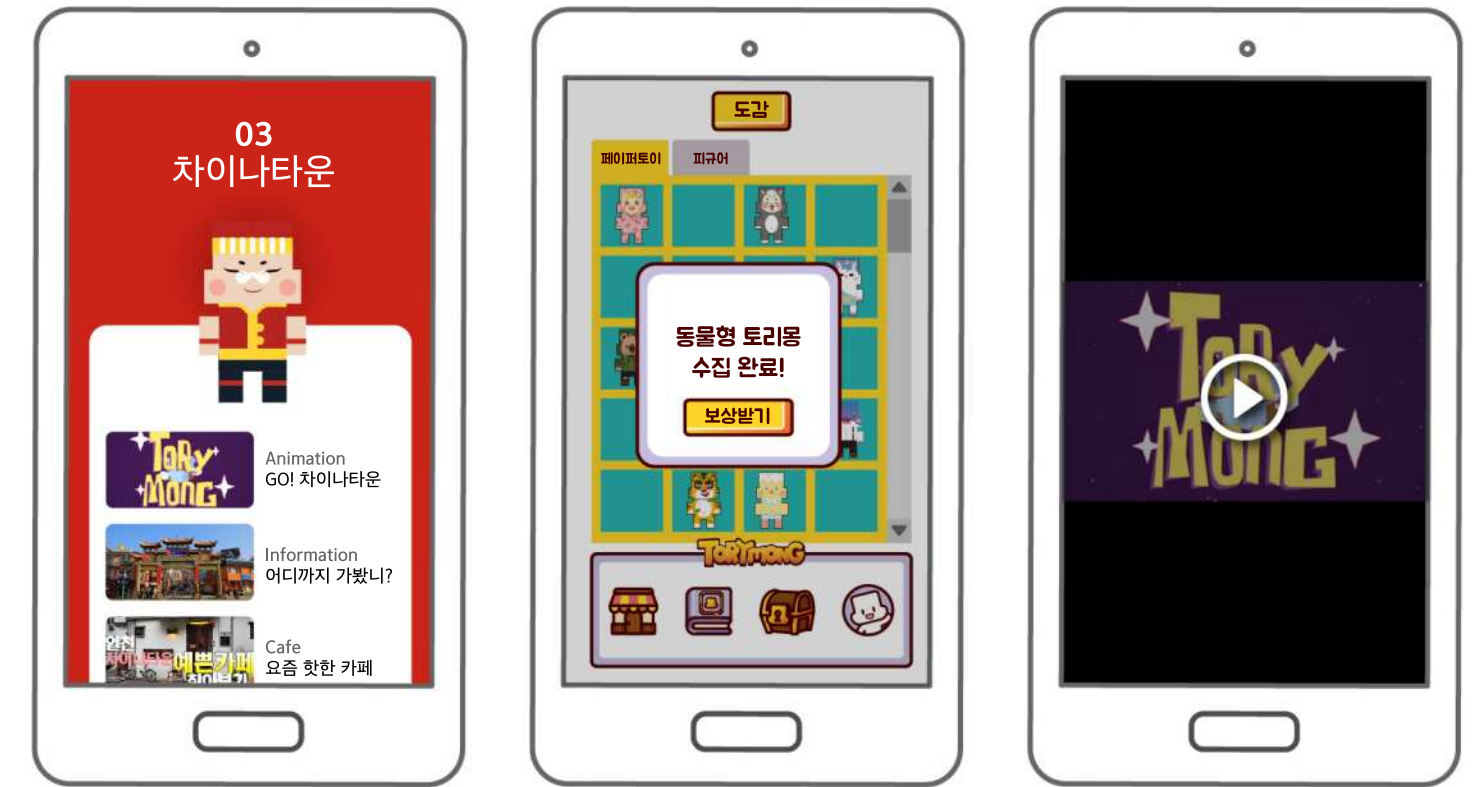
Linked marketing through dedicated application is possible



Torymong Guide Map/Leaflet



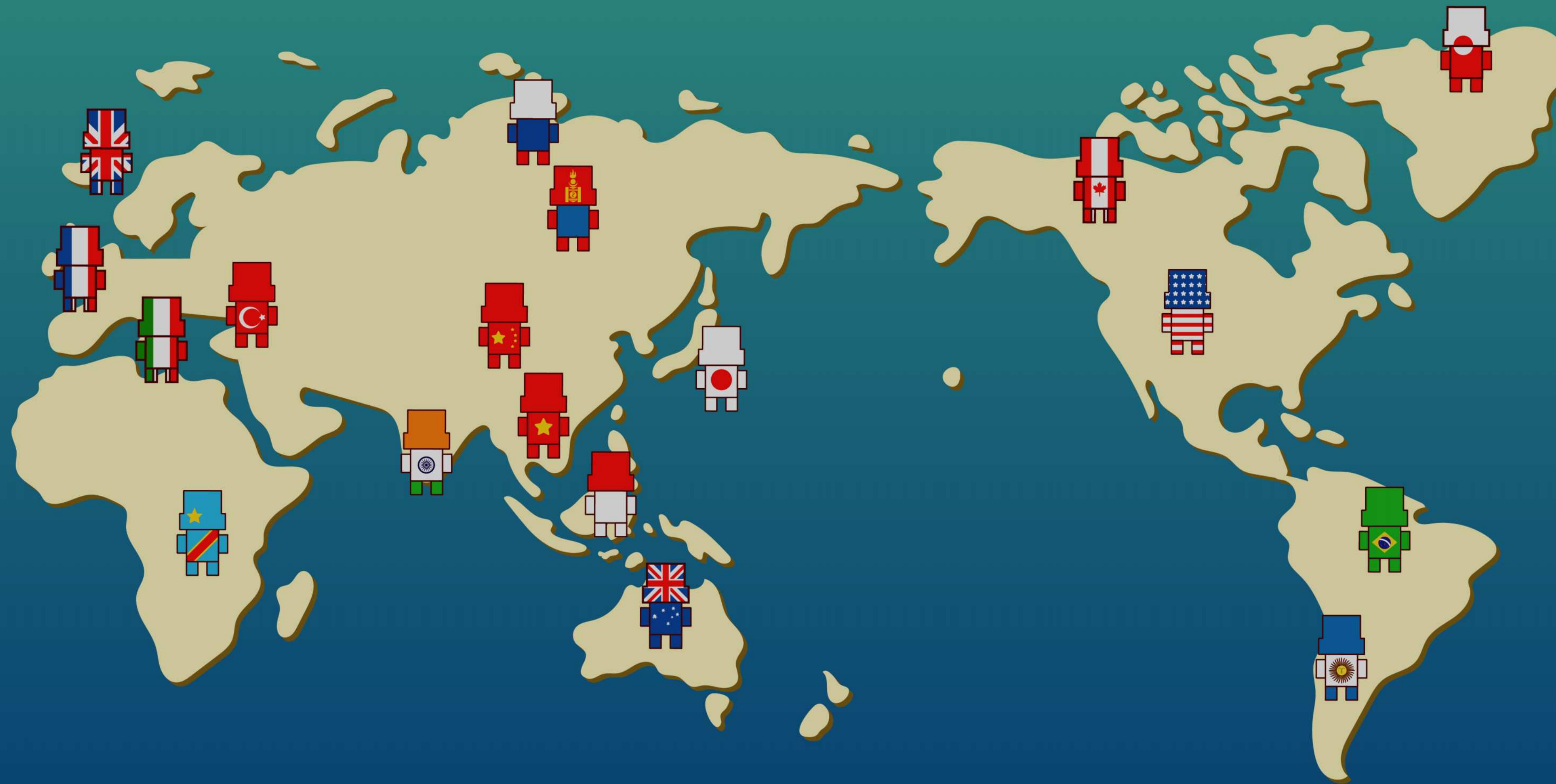
Application



Online Marketing Content



Many people are with Torymong.




Meet Torymong, a new culture in the world.

# Thank you.

## CONTACT US

수 박 SOOBAK

 +82-32-866-7179

 soobak@torymong.com

 B1011, 119, Songdomunhwa-ro,  
Yeonsu-gu, Incheon, Republic of Korea