

Global Cosmeceutical Standard



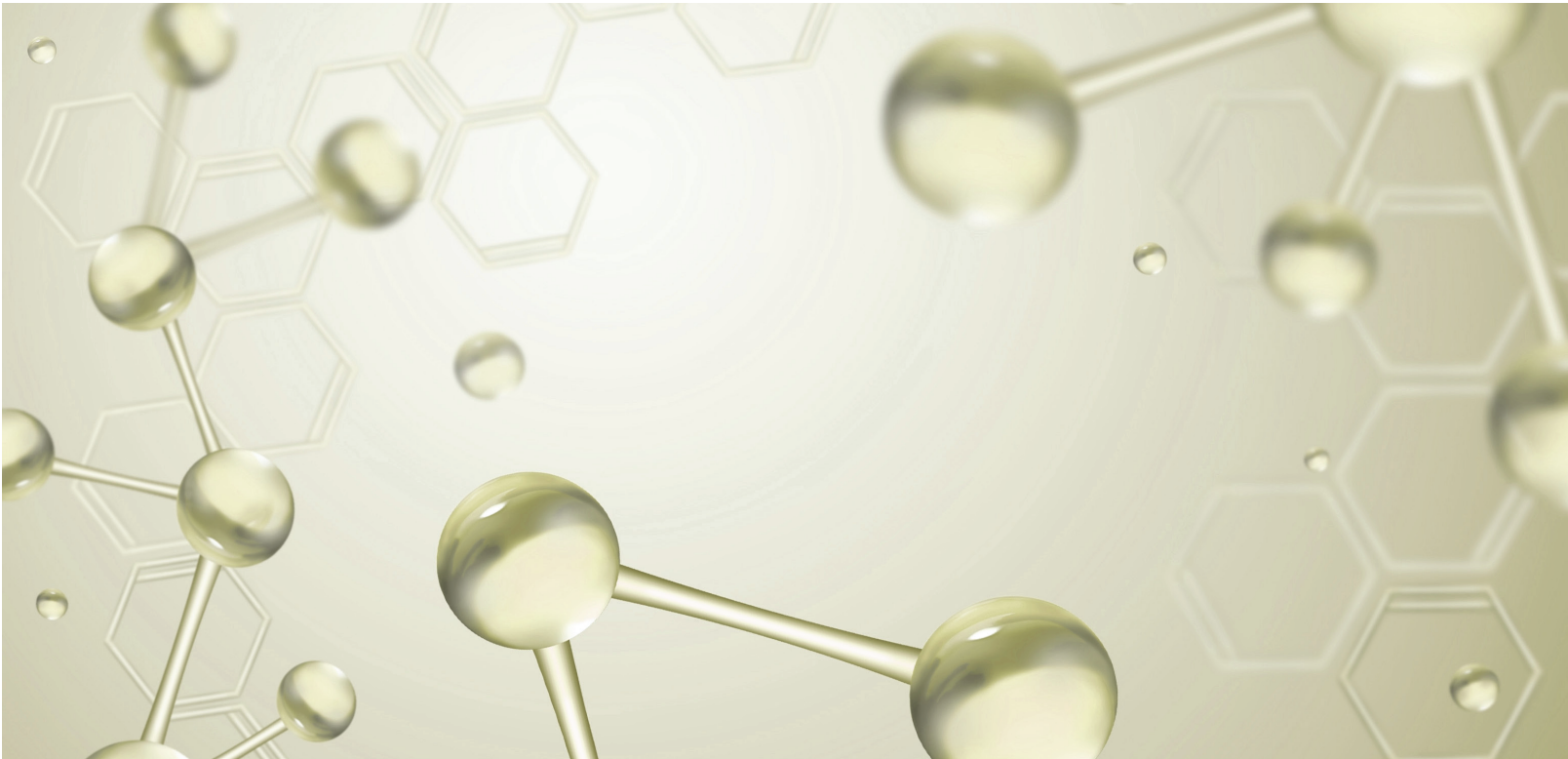
Intensive System - Skin Care With BIO-SCIENCE Technology



ENBIOSCIENCE CO., LTD
www.reboncel.com

WHO DOES MAKE IT?

ENBIOSCIENCE, the company that makes **COSMECEUTICAL** products well.



OCM TOTAL SERVICE COMPANY, “ENBIOSCIENCE”

Established in 2001, ENBIOSCIENCE CO., LTD with its sincere passion has been successful in developing a number of products being renowned for its high-standard skin care products.

Further, our technology has improved to the extent of using a new fermentation technology and amino acids in permeating and carrying substances. Our skin care products, which are the fruit of our technology, are proved to have remarkable effects compared to the rival products of other producers supplying to hospitals, pharmacists, online shops and cosmetics shops. Also, our exported products are gaining positive responses demonstrating our advanced technology in overseas. Again, we appreciate your loyalty to our products and supports for us. With continuous investment in R&D, we promise to open a new chapter as a company with the newest technology of the world.

What is
COSMECEUTICAL?

Word that synthesized
cosmetics and medication
Product that ensures safety
of cosmetics and effect of
medication simultaneously



Creation Based on Cosmeceutical Skin Bioscience

WHO DOES MAKE IT?

ENBIOSCIENCE, the pride of functional cosmetics
Continuing the legacy with
global certification and quality control system



● Production System by International Cosmetics-Good Manufacturing Practices(GMP) ———— ISO 22716

● Quality Control System ———— ISO 9001

● Environment Management System ———— ISO 14001

● Research and Development Center Designated by Korean Government

● Company Specialized in Cosmetics for Hospitals

● Venture Business Enterprise Designated by Korean Government

● Quasi-Drug Product Expert Company

● Outstanding Small and Medium Sized Enterprise Designated by the Incheon Metropolitan City

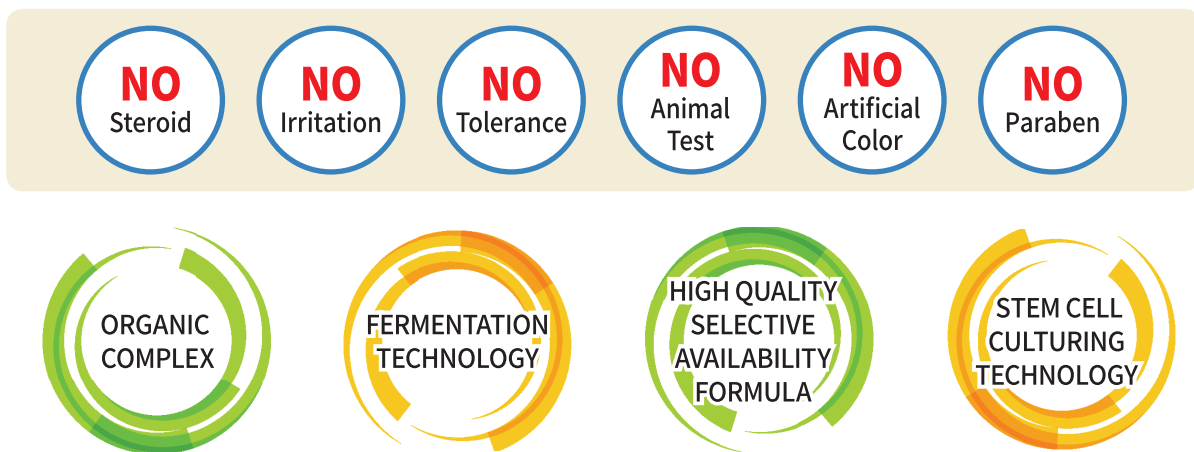
● Specialized Company of OCM, OBM and ODM

HOW DO WE MAKE IT ?

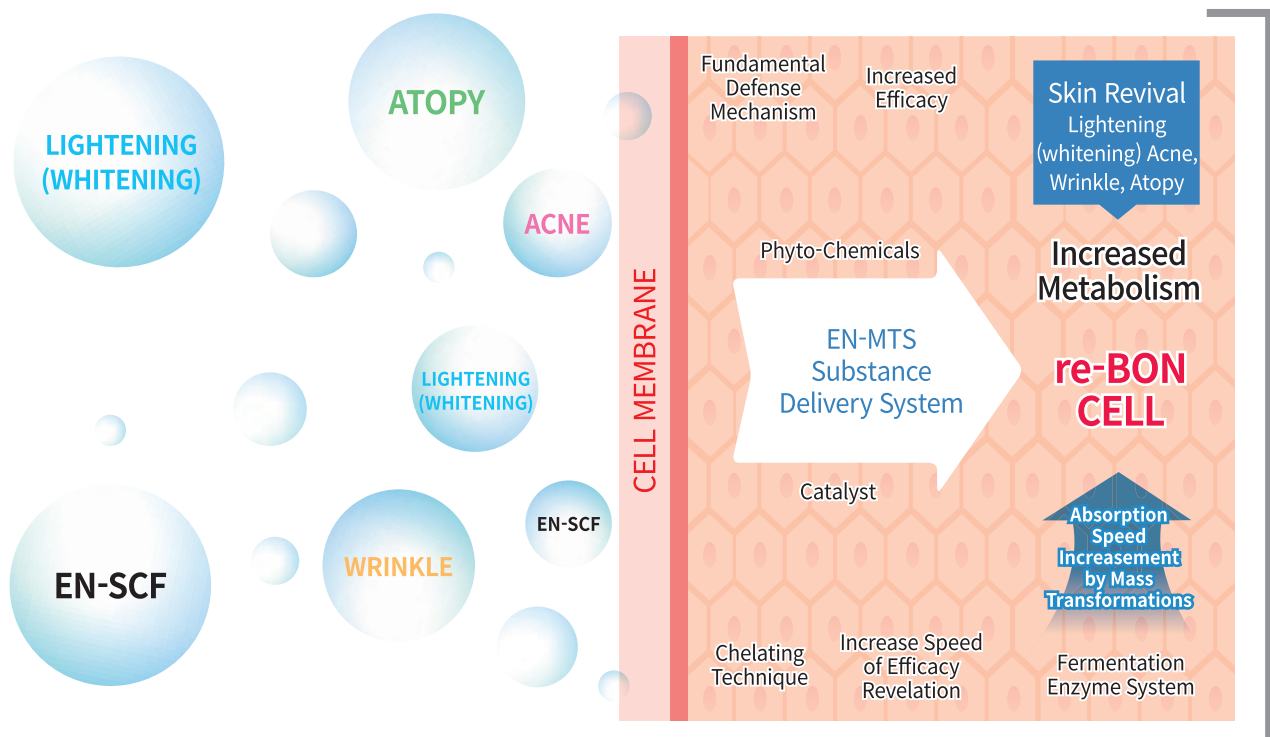
「ENBIOSCIENCE」 will stand at **the center of skin science** with the philosophy of developing products for the beautiful and healthy skin, and by eliminating substances that are hazardous to the skin with **environment-friendly substances**.

Research and development of substance delivery system that can effectively deliver effective substances into the skin by using applied substance database that ranges from natural fermented substances to synthetic substances based on bioscience techniques.

MANUFACTURE PHILOSOPHY



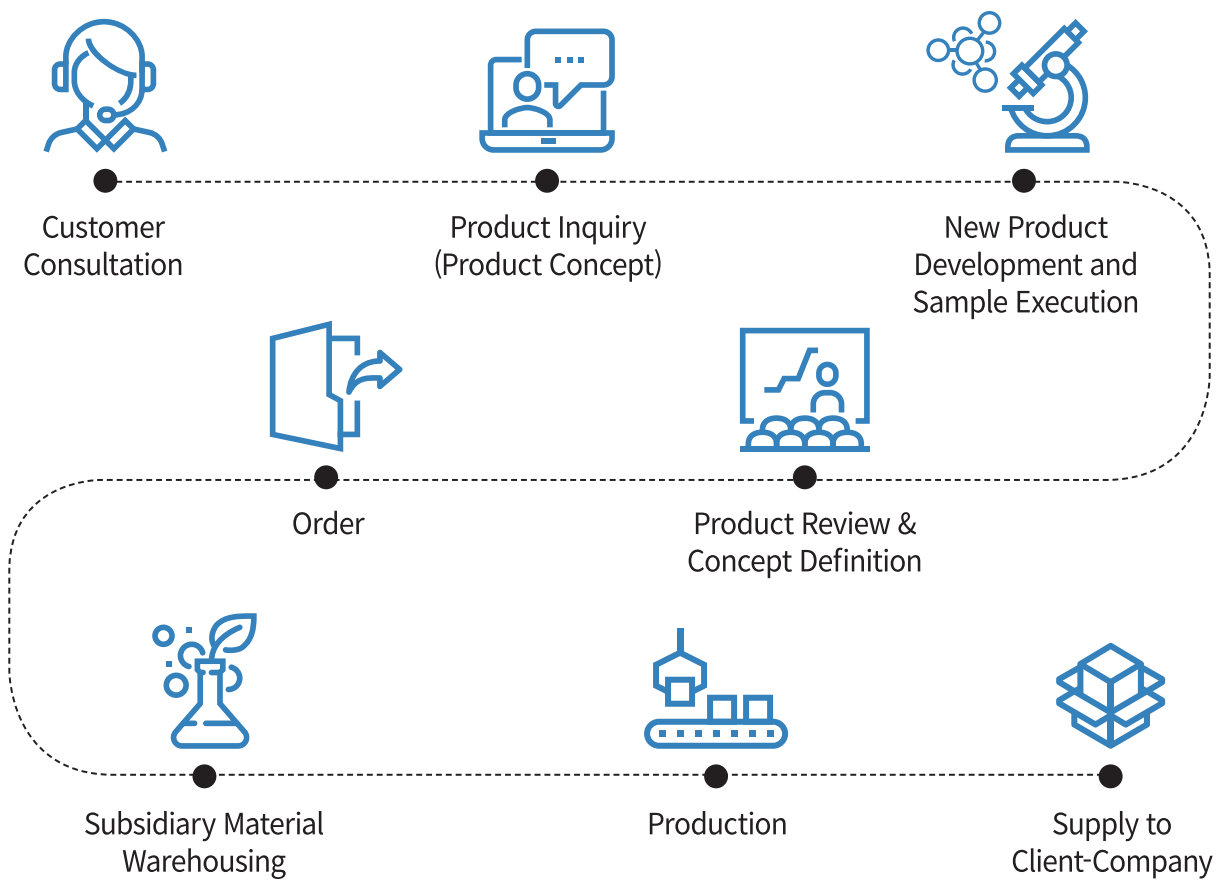
BIOSCIENCE TECHNIQUE



HOW DO WE MAKE IT ?

Customer Satisfaction via 「ENBIOSCIENCE」 specific Total OCM Service

「ENBIOSCIENCE」 provides total service for making effective functional cosmetics ranging from development, production, management and shipment of COSMECEUTICAL cosmetics with accumulated up-to-date technologies and philosophy through the know-how for developing cosmetics exclusively for hospitals.





EYE CREAM

Functional Cosmetic for Wrinkle Care

◆ WRINKLE CARE

It visibly firms and brightens the aged area with amino-peptide complex such as acetyl hexapeptide-8 alike as BOTOX, dipalmitoyl hydroxyproline around the eye - lids, corners, under-eyes and lip corners - without drastic measures.

◆ MICRO-RELIEF

It also acts on the micro-relief by smoothing the plateau surface.

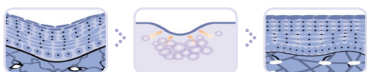
◆ TENSOR EFFECT

It gives a tensor effect appearing by a decrease in the number and depth of wrinkles.

◆ FACE BRIGHTNESS, SKIN SMOOTHING, STAYING IN OF MAKE-UP

It confirms these results by showing a good efficiency : Face Brightness, Skin Smoothing, Staying in of make-up.

- AGED AREA AROUND THE EYE - LIDS, CORNERS, UNDER-EYES AND LIP CORNERS
- LOST SKIN ELASTICITY



● MAIN INGREDIENTS

- REJUVENATING/AGEING CARE
Acetyl Hexapeptide-8, Hydrolyzed Collagen
- PORES FIRMING, SKIN ELASTICITY, WRINKLE CARE
Dipalmitoyl Hydroxyproline, Adenosine
- NUTRIENTS / MOISTURIZING
Sodium Hyaluronate, Centella Asiatica Extract, Panthenol, Proline
- PENETRATION IMPROVEMENT
Carrier/Micro-Technology

● DIRECTIONS

Apply a proper amount on the aged area around the eye - lids, corners, under- eyes, lip corners in the morning and evening after washing

- STEP 1.** After washing eye and Keeping a dry eye area, use it first before fundamental makeup.
- STEP 2.** Put a proper amount on the back of the hand.
- STEP 3.** Apply a proper amount to a clean, dry eye area from the inner corner of the eye to outer the eye in a circle.
- STEP 4.** After it takes 20~30 second, reapply to your eye areas by dividing the remaining cream on the back of the hand into 2 to 3 times.



● VOLUME 15ml

TONE UP WHITENING CREAM

Functional Cosmetic for Brightening(Whitening) Care

◆ BRIGHTENING COMPLEX WITH PEPTIDES

It contains a perfect blend of specific ingredients that naturally lightens the skin to make it more even and radiant and is formulated to gradually lighten skin pigmentation with derived peptide materials.

◆ FAST EFFICACY

It can be used on all parts and lightens the skin after several weeks in most cases with continued use.

◆ DIMINISHING FRECKLES

This can also help lighten freckles, age spots, dark under-eye circles, weathered skin and other skin discolorations.

◆ FACE REBALANCING

It keeps skin young and supple. Improves resiliency, tones and restores maximum moisture. Also it recovers the face of your youth with face rebalancing complex based on bio-science.

◆ FAST BRIGHTENING AND SILKY FEELING

It is no boundary area with Micro-Technology



● MAIN INGREDIENTS

- **BRIGHTENING AND REJUVENATING/ AGEING CARE**
Arutin, Niacinamide, Acetyl Hexapeptide-8, Brassica Oleracea Italica (Broccoli) Extract
- **PORES FIRMING AND SKIN ELASTICITY**
SH-Oligopeptide-1, SH-Oligopeptide-2, SH-Polypeptide-1, SH-Polypeptide-9, SH-Polypeptide-11
- **NUTRIENTS / MOISTURIZING**
Sodium Hyaluronate, Centella Asiatica Extract, Panthenol, Vitis Vinifera(Grape) Callus Culture Extract, Nelumbo Nucifera Callus Culture Extract

● DIRECTIONS

Apply an adequate amount to the face twice a day after toner.

● VOLUME 50ml

BUBBLE ESSENCE

All in One Typed Functional Cosmetic for Face Volume UP, Skin Gloss, Revitalization, Nourishment and Brightening

◆ ENHANCING THE BUST AND CURVES OF FACE

It is a complete face enhancement designed to enhance the bust and curves of face.

◆ PROMOTING FACE VOLUME WITH A LIPOFILLING-LIKE EFFECT

It helps to promote face volume with a lipofilling-like effect based on an Anemarrhena Asphodeloides Root Extract with many kinds of peptides and plant extracts that stimulates the differentiation and proliferation of adipocytes.

◆ THE VOLUME OF THE FATTY TISSUE- LEADING TO A MORE VOLUMINOUS AND SHAPELY FIGURE

It promotes the storage of lipids, it helps to enhance the volume of the fatty tissue- leading to a more voluminous and shapely figure and increased the bust volume of small breasted women. It is also strongly recommended to help plump the buttocks, hands, cheeks and any other part of the body or face that needs volume filling.



● MAIN INGREDIENTS

- **THE VOLUME OF THE FATTY TISSUE- LEADING TO A MORE VOLUMINOUS AND SHAPELY FIGURE**
Sodium Hyaluronate, Snail Secretion Filtrate, Ceramide
- **ENHANCING THE BUST AND CURVES OF FACE AND PROMOTING FACE VOLUME WITH A LIPOFILLING-LIKE EFFECT**
Anemarrhena Asphodeloides Root Extract. Hydrolyzed Collagen, Acetyl Hexapeptide-8, RH-Oligopeptide-1, SH-Oligopeptide-1, SH-Oligopeptide-2, SH-Polypeptide-1, SH-Polypeptide-9, SH-Polypeptide-11, Tripeptide-29, Copper Tripeptide-1, Palmitoyl Tetrapeptide-7, Hexapeptide-9, Nonapeptide-1, Tetrapeptide-44

● DIRECTIONS

After washing, apply a thin layer to the aged area twice daily and massage gently until it's fully absorbed.

● VOLUME 50ml

CLEANSING WATER

Intensive Soft Cleansing Functional Cosmetic Using Micelle Formula

◆ SOAP FREE FORMULA

A concentrated, soap-free, Soft Water Cleansing designed to thoroughly remove impurities and makeup without disturbing the skin's nature physiological balance.

◆ PHYSIOLOGICAL BALANCE

It cleanses, purifies and refreshes skin while respecting its physiological balance and soothes, moisturizes and softens skin.

◆ MICELLE FORMULA

By an effective micelle cleansing base with soap berry extract, makeup is easily removed without rubbing and face & eyes are left thoroughly clean.



● MAIN INGREDIENTS

- **MICELLE MATERIALS and WATER-OIL BALANCE CONTROL**
Glycerin Derivatives, Sapindus Trifoliatus Fruit Extract
- **SOOTHING AND COOLING EFFECT**
Sodium Hyaluronate, Centella Asiatica Extract, Glycyrrhiza Glabra (Licorice) Root Extract, Luffa Cylindrica Fruit/Leaf/Stem Extract, Aloe Barbadensis Leaf Extract, Portulaca Oleracea Extract

● DIRECTIONS

Soak a cotton pad. Cleanse and removes make-up and dry gently without rinse or in case, wash with warm water.

● VOLUME 250ml

HYDROGEL SLEEPING PACK

Functional Cosmetic (Moisturizing, Lightening and Wrinkle Care) using The Optimum Gelling Point Technology

◆ THE OPTIMUM GELLING POINT TECHNOLOGY

Comparing to the existed hydro-gel sheet mask, it can be applied easily and all (100%) of it is absorbed into the skin using the optimum gelling point technology with no hardening into jelly.

◆ REVOLUTION

It overcomes the limit of current hydro gel mask sheet. Instead of using a sheet, this hydro gel is in cream type and makes the skin easy to store them. It lets your skin breathable whereas the usual hydro gel sheet gives you a stuffy feeling while it is on. In addition, it is unnecessary to remove but just go to sleep with HYDROGEL SLEEPING PACK simply.

◆ LIGHTENING(WHITENING) AND WRINKLE CARE

Not only will this fight wrinkles and freckles, it will also give your skin an immediate pop as it delivers a beautiful gel of whitening and wrinkle care ingredients

◆ SOOTHING AND COOLING EFFECTS

It makes the skin soothe and cool due to its nature of hydro-gel with various plant extract.



● MAIN INGREDIENTS

- **SOOTHING AND COOLING**
Gellan Gum, Biosaccharide Gum-1, Mannan, Ceramide 3, Betaine, Algin, Aloe Barbadensis Leaf Water, Jeju Plant Complex
- **LIGHTENING(WHITENING) AND WRINKLE CARE**
Niacinamide, Adenosine, Sodium Ascorbyl Phosphate, Glycyrrhiza Glabra (Licorice) Root Extract

● DIRECTIONS

After washing in the evening, apply a thin layer to the aged area daily and massage gently until it's fully absorbed. Use an exfoliation cosmetic once a week to maximize the benefit.

● Volume 50ml

BIOSCIENCE ON YOUR SKIN

SKIN LIFE SCIENCE OF ONE DROP

We utilize even one drop for your skin life science

COSMECUTICAL SOLUTION

INTENSIVE SKIN CARE SYSTEM

We will stand at the center of skin science with persistent research for beautiful and healthy skin

Global Cosmeceutical Standard



We are a company that sells cosmetics exclusively for hospitals that researches and makes skin science products, basic cosmetics, functional cosmetics and highly functional medical cosmetics. We are utilizing fully stabilized skin science by grafting together substance infiltration and delivery technologies using fermentation method and Amino Acid carrier. We will become the leader of global COSMECEUTICALS by continuing to make incessant efforts to innovate skin science based on the securing of safety following R&D and clinical studies administered on our own.



Nature-Friendly
Substance



Elimination of
Hazardous Substances
to the Skin



Reasonable Price



Customer Trust

REBORN

REGAIN

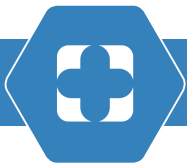
REJUVEVATE

REPAIR

REBONCEL

Strengthens skin's inherent revival ability to ensure that the skin can become stronger, starting from the inside and helps to maintain optimal skin condition.

Effort is made to eliminate root causes of skin troubles that are common in the people of the modern era by eliminating the substances that cause skin trouble and by securing comparative competence in substances.



REBONCEL COSMECEUTICAL PRODUCTS

LIGHTENING(WHITENING) CARE

ULTRA ARBUTIN WHITENING CREAM



15ml

- High Concentrated Lightening (Whitening) Formula with Arbutin 5%
- Is available on the acne-prone skin and non-greasy formula.
- Ultra and High Concentrated Lightening(Whitening) Formula with Arbutin 5%

ULTRA VITAC 7.5 WHITENING SOLUTION



35ml

- Skin Lightening(Whitening) Solution Formula with Ascorbic Acid 7.5% and Arbutin
- Stabilization Technology of Ascorbic Acid Using Medium' s Bridge Bond
- High Concentrated and Ultra Lightening(Whitening) Formula with Ascorbic Acid

AGEING CARE

PL CREAM



15ml

- Intensive Aqua Gel with Snail Secretion Filtrate, Aloe Barbadensis Leaf Extract, Aloe Barbadensis Leaf Juice, Centella Asiatica Extract and Biotin
- Provides excellent moisturizing and soothing effect.
- Relieves itchiness and stress with moisturizing and cooling effect and keeps the skin healthy.
- Intensive Regeneration Gel After Laser Treatment like as laser skin treatment like as toning

REJUVENATING CREAM



50ml

- Functional Cosmetic with Adenosine and other compositions for Wrinkle Care and Skin Regeneration
- Skin Elasticity Cream with Proline and Natto Gum
- Non Greasy Nutrient Cream

ACNE CARE

SEBUM CATCHER CLEAR



100ml

- Toner for oily skin and acne-prone skin
- Controls excessive secretion of sebum and protects oily skin due to sebum.
- Relieves itchiness and stress with moisturizing and cooling effect and keeps the skin healthy.

AC GEL



15ml

- Is fit to apply on the acne-prone skin and VIVO(KC-151111-C1) test, Conformity Assessment and Efficacy Evaluation, was passed clinically.
- Spot gel for oily skin and acne-prone skin
- Intensive gel for affected part due to a pimple
- Intensive soothing gel for trouble skin due to a pimple

MOISTURIZING / SOOTHING / TROUBLE CARE / SKIN REBALANCING

AQUA RICH PURE SKIN



100ml

- High Moisturizing Formula with No Alcohol
- Helps to make the redness and itchiness go away and keep the skin clean.
- Provides nutrients and helps skin retain moisture to sensitive skin.
- For dry and sensitive skin
- Relieves itchiness and stress with moisturizing and cooling effect and keeps the skin healthy.

AQUA RICH SOOTHING MIST



100ml

- Mist typed product for moisturizing, soothing and excellent astringent effect
- Helps to make the redness and itchiness go away and keep the skin clean.
- Provides nutrients and helps skin retain moisture to sensitive skin.
- For dry and sensitive skin

MOISTURIZING / SOOTHING / TROUBLE CARE / SKIN REBALANCING

AQUA RICH SOOTHING MASK



25ml/40ml

- Natural 100% cotton mask, No Itchiness
- Provides excellent moisturizing and soothing effect.
- Helps to make the redness and itchiness go away and keep the skin clean.
- For dry and sensitive skin

AQUA RICH HYALURONIC ESSENCE



100ml

- High Concentrated Essence with 30% Hyaluronic Acid
- Helps to make the redness and itchiness go away and keep the skin clean.
- Provides excellent moisturizing and soothing effect.
- Relieves itchiness and stress with moisturizing and cooling effect and keeps the skin healthy.

AQUA RICH SOFT LOTION



200ml

- High moisturizing cream for dry, sensitive and trouble skin.
- Helps to make the redness and itchiness go away and keep the skin clean.
- Provides nutrients and helps skin retain moisture to sensitive skin.
- For dry and sensitive skin
- Helps skin retain water and moisturized long time.

AQUA RICH CREAM



50ml

- High moisturizing cream for dry, sensitive and trouble skin.
- Helps to make the redness and itchiness go away and keep the skin clean.
- Provides nutrients and helps skin retain moisture to sensitive skin.
- For dry and sensitive skin
- Helps skin retain water and moisturized long time.

BLEMISH CARE/ SUN

BRILLIANT BB CREAM(SPF40, PA++)



50ml

- Triple Functional Product with UV Cut, Whitening and Wrinkle Care approved by KFDA
- High Performance UV Cut Formula with SPF40, PA++
- Ultra Whitening and Wrinkle Care Formula
- Covers skin blemish.
- Is a supple, lightweight formula with a hint of color you can use in place of foundation for a natural finish and a healthy illuminating complexion.

ULTRA SUN BLOCK CREAM(SPF50+, PA+++)



50ml

- Triple Functional Formula with UV Cut, Whitening and Wrinkle Care approved by KFDA
- High Performance UV Cut Formula with SPF50+, PA+++
- Ultra Whitening and Wrinkle Care Formula
- Is a supple, lightweight formula with a hint of color you can use in place of foundation for a natural finish and a healthy illuminating complexion.

HAIR LOSS CARE

HAIR CLINIC SHAMPOO



300ml

- Functional Shampoo with Dexpanthenol, Salicylic Acid and Menthol for Hair Loss Care and approved by KFDA
- Anti-Hair Loss Expert
- Recovers hair and scalp.
- Strengthens the root of hair and recovers hair follicle.
- Increases hair thickness.

HAIR CLINIC ESSENCE



100ml

- Functional Essence with Dexpanthenol, Salicylic Acid and Menthol for Hair Loss Care and approved by KFDA
- Anti-Hair Loss Expert
- Recovers hair and scalp.
- Strengthens the root of hair and recovers hair follicle.
- Increases hair thickness.

CLEANSING CARE

AQUA RICH PURE CLEANSER



250ml

- Foam Mousse Cleanser with Amino Acid Cleansing Agent
- Foam Mousse Weak Acid Cleansing Formula For Dry and Sensitive Skin
- Relieves flushing and irritation on contact while it nourishes and strengthens delicate, vulnerable skin.
- Excellent Cleansing Effect
- Designed to thoroughly remove impurities without disturbing the skin's nature physiological balance.

FACE WASH ENZYME POWDER



60g

- Powder Cleanser with Amino Acid Cleansing Agent
- The powder will dissolve even in cold water.
- Contains natural enzymes of papain extracted from unripe papaya fruits of which help to eliminate dead keratins without skin irritation.
- Is a powder cleanser for oily and acne-prone skin.
- Removes impurities and helps maintain a clear and healthy looking skin.

ATOPY CARE

DERMA BARRIER CREAM



30ml

- Intensive Skin Barrier Formula for Psoriasis
- Helps to make the redness and itchiness go away and keep the skin clean.
- Provides nutrients and helps skin retain moisture to sensitive skin.
- For dry and sensitive skin
- Relieves itchiness and stress with moisturizing and cooling effect and keeps the skin healthy.

INTENSIVE CREAM



100ml

- Intensive Skin Barrier Formula for Dry Skin
- Helps to make the redness and itchiness go away and keep the skin clean.
- Provides nutrients and helps skin retain moisture to sensitive skin.
- For dry and sensitive skin

ATOPY CARE

INTENSIVE LOTION



200ml

- Intensive Skin Barrier Formula for Dry Skin
- Helps to make the redness and itchiness go away and keep the skin clean.
- Provides nutrients and helps skin retain moisture to sensitive skin.
- For dry and sensitive skin

SPECIAL CARE

CELL CARE CREAM



60ml

- Provides high relaxing function with Glucosamine, Sodium Chondroitin Sulfate, Snail Secretion Filtrate and Unsaturated Fatty Acid.
- Helps to make the redness and itchiness go away and keep the skin clean.
- Provides skin's flexible function.
- Relieves itchiness and stress with moisturizing and cooling effect and keeps the skin healthy.

BLUEZULENE SHINING VELVET



50ml

- Wrinkle and Whitening Care Functional Cosmetic with Adenosine and Niacinamide
- Is a clear, revolutionary rejuvenating water cream which contains guaiazulene and Plant Callus (Stem Cell) Cultures.
- Promotes skin to absorb moisture, make the skin smooth and shiny and add skin-brightening ingredients up to your deep skin to improve your complexion.
- Is the key ingredient in this anti-aging breakthrough formula to protect skin cells from stress and have proven through clinical research to protect and enhance the life span of human skin stem cells and promote a self-renewal capacity of the skin.
- Promotes a self-renewal capacity of the skin.

BSF 12 AMPOULE



5ml×10ea

- Intensive Ageing, Whitening and Wrinkle Care Cosmetic Using Human Stem Cell Conditioned Media, Plant Stem Cell Cultures, DNA and Oligopeptides
- Intensive Anti-Ageing Care with 12 kinds of Peptide and Plant Stem Cell
- Human Oligopeptide Growth Factor : Activates with Cultured DNA come from Plants and provides Skin Elasticity and Vitality.
- Plant Extraction DNA: Dermatological Culturing Technology, Peptide Function Synergy
- Plant Stem Cell Cultures : Provides Concentrated Nutrients.

LIGHTENING(Whitening)

01



02



01

ULTRA ARBUTIN WHITENING CREAM 15ml

Arbutin(5%), Morus Alba Root Extract, Glycyrrhiza Glabra (Licorice) Root Extract, Brassica Oleracea Italica (Broccoli) Extract, Centella Asiatica Extract, Niacinamide, Ceramide 3

PRODUCT BENEFIT

- ❖ High Concentrated Lightening(Whitening) Formula with Arbutin 5%
- ❖ Is available on the acne-prone skin and non-greasy formula.
- ❖ Ultra and High Concentrated Lightening(Whitening) Formula with Arbutin 5%



02

ULTRA VITA C 7.5 WHITENING SOLUTION 35ml

Ascorbic Acid (7.5%), Arbutin, Brassica Oleracea Italica (Broccoli) Extract, Perilla Frutescens Leaf Extract, Morus Alba Root Extract, Camellia Sinensis Leaf Extract

PRODUCT BENEFIT

- ❖ Skin Whitening Solution Formula with Ascorbic Acid 7.5% and Arbutin
- ❖ Stabilization Technology of Ascorbic Acid Using Medium's Bridge Bond
- ❖ High Concentrated and Ultra Lightening(Whitening) Formula with Ascorbic Acid



01



02

03



01

BSF 12 AMPOULE 5ml X 10ea

ALL IN ONE AMPOULE OF Whitening + Wrinkle Care + Nourishment + Moisturizing + Elasticity

Human Stem Cell Conditioned Media, Niacinamide, Ceramide 3, Adenosine, Tripeptide-29, Copper Tripeptide-1, Palmitoyl Tetrapeptide-7, Hexapeptide-9, Nonapeptide-1, Sodium DNA, Nelumbo Nucifera Callus Culture Extract, Vitis Vinifera(Grape) Callus Culture Extract, Acetyl Hexapeptide-8, SH-Oligopeptide-1, SH-Oligopeptide-2, SH-Polypeptide-1, SH-Polypeptide-9, SH-Polypeptide-11

PRODUCT BENEFIT

- ❖ Intensive Ageing, Whitening and Wrinkle Care Cosmetic Using Human Stem Cell Conditioned Media, Plant Stem Cell Cultures, DNA and Oligopeptides
- ❖ Intensive Anti-Ageing Care with 12 kinds of Peptide and Plant Stem Cell
- ❖ Human Oligopeptide Growth Factor : Activates with Cultured DNA come from Plants and provides Skin Elasticity and Vitality.
- ❖ Plant Extraction DNA : Dermatological Culturing Technology, Peptide Function Synergy
- ❖ Plant Stem Cell Cultures : Provides Concentrated Nutrients.



02

BLUEZULENE SHINNING VELVET 50ml

Intensive Hydro Skin Care Program

Niacinamide, Adenosine, Aloe Barbadensis Leaf Water , Illicium Verum(Anise) Fruit Extract, Citrus Paradisi(Grapefruit) Fruit Extract, Scutellaria Baicalensis Root Extract, Hydrolyzed Collagen, Ceramide 3, Guaiazulene

PRODUCT BENEFIT

- ❖ Wrinkle and Whitening Care Functional Cosmetic with Adenosine and Niacineamide
- ❖ Is a clear, revolutionary rejuvenating water cream which contains guaiazulene and Plant Callus (Stem Cell) Cultures.
- ❖ Promotes skin to absorb moisture, make the skin smooth and shiny and add skin-brightening ingredients up to your deep skin to improve your complexion.
- ❖ Is the key ingredient in this anti-aging breakthrough formula to protect skin cells from stress and have proven through clinical research to protect and enhance the life span of human skin stem cells and promote a self-renewal capacity of the skin.
- ❖ Promotes a self-renewal capacity of the skin.



03

CELL CARE CREAM 60ml

Glucosamine, Sodium Chondroitin Sulfate, Boswellia Serrata Resin Extract, Curcuma Longa (Turmeric) Root Extract, Harpagophytum Procumbens Root Extract, Snail Secretion Filtrate

PRODUCT BENEFIT

- ❖ Provides high relaxing function with Glucosamine, Sodium Chondroitin Sulfate, Snail Secretion Filtrate and Unfatty Acid.
- ❖ Helps to make the redness and itchiness go away and keep the skin clean.
- ❖ Provides skin's flexible function.
- ❖ Relieves itchiness and stress with moisturizing and cooling effect and keeps the skin healthy.



MOISTURIZING / SOOTHING / TROUBLE CARE / SKIN REBALANCING



01 AQUA RICH HYALURONIC ESSENCE 100ml

Sodium Hyaluronate, Betaine, Natto Gum, Panthenol, Aloe Barbadensis Leaf Extract, Portulaca Oleracea Extrac

PRODUCT BENEFIT

- ❖ High Cocentrated Essence with 30% Hyaluronic Acid
- ❖ Helps to make the redness and itchiness go away and keep the skin clean
- ❖ Provides excellent moisturizing and soothing effect.
- ❖ Relieves itchiness and stress with moisturizing and cooling effect and keeps the skin healthy.



02 AQUA RICH PURE SKIN 100ml

Natto Gum, Sodium Hyaluronate, Centella Asiatica Extract, Panthenol, Retinyl Palmitate

PRODUCT BENEFIT

- ❖ High Moisturizing Formula with No Alcohol
- ❖ Helps to make the redness and itchiness go away and keep the skin clean.
- ❖ Povides nutrients and helps skin retain moisture to sensitive skin.
- ❖ For dry and sensitive skin
- ❖ Relieves itchiness and stress with moisturizing and cooling effect and keeps the skin healthy.



03 AQUA RICH SOOTHING MIST 100ml

Polyglutamic Acid, Beta-Glucan, Sodium Hyaluronate, Aloe Barbadensis Leaf Extract, Chrysanthellum Indicum Extract

PRODUCT BENEFIT

- ❖ Has mist typed product for moisturizing and soothing and excellent astrigent effect.
- ❖ Helps to make the redness and itchiness go away and keep the skin clean.
- ❖ Povides nutrients and helps skin retain moisture to sensitive skin.
- ❖ For dry and sensitive skin.



MOISTURIZING / SOOTHING / TROUBLE CARE / SKIN REBALANCING



01 AQUA RICH SOFT LOTION 200ml

Simmondsia Chinensis (Jojoba) Seed Oil, Squalane, Sodium Hyaluronate, Panthenol, Beta-Glucan, Chamaecyparis Obtusa Water, Ceramide 3, Aloe Barbadensis Leaf Extract

PRODUCT BENEFIT

- ❖ High moisturizing lotion for dry, sensitive and trouble skin.
- ❖ Helps to make the redness and itchiness go away and keep the skin clean.
- ❖ Provides nutrients and helps skin retain moisture to sensitive skin.
- ❖ For dry and sensitive skin
- ❖ Helps skin retain water and moisturized long time.



02 AQUA RICH CREAM 50ml

Simmondsia Chinensis (Jojoba) Seed Oil, Natto Gum, Sodium Hyaluronate, Centella Asiatica Extract, Panthenol, Aloe Barbadensis Leaf Extract, Ceramide 3, Portulaca Oleracea Extract

PRODUCT BENEFIT

- ❖ High moisturizing cream for dry, sensitive and trouble skin.
- ❖ Helps to make the redness and itchiness go away and keep the skin clean.
- ❖ Provides nutrients and helps skin retain moisture to sensitive skin.
- ❖ For dry and sensitive skin
- ❖ helps skin retain water and moisturized long time.



03 AQUA RICH SOOTHING MASK 40ml

Sodium Hyaluronate, Centella Asiatica Extract, Panthenol, Aloe Barbadensis Leaf Extract

PRODUCT BENEFIT

- ❖ Natural 100% cotton mask, No Itchness
- ❖ Provides excellent moisturizing and soothing effect.
- ❖ Helps to make the redness and itchiness go away and keep the skin clean.
- ❖ For dry and sensitive skin



AGING CARE/ ACNE CARE



01
P-L CREAM 15ml

Snail Secretion Filtrate, Aloe Barbadensis Leaf Extract, Aloe Barbadensis Leaf Juice, Centella Asiatica Extract, Sodium Hyaluronate, Portulaca Oleracea Extract, Allium Cepa (Onion) Bulb Extract, Ubiquinone

PRODUCT BENEFIT

- ❖ Intensive Aqua Gel with Snail Secretion Filtrate, Aloe arbadensis Leaf Extract, Aloe Barbadensis Leaf Juice, Centella Asiatica Extract and Biotin
- ❖ Provides excellent moisturizing and soothing effect.
- ❖ Relieves itchiness and stress with moisturizing and cooling effect and keeps the skin healthy.
- ❖ Intensive Gel After Laser Treatment like as laser skin treatment like as toning



02
REJUVENATING CREAM 50 ml

Adenosine, Sodium Hyaluronate, Ceramide 3, Panthenol, Natto Gum, Centella Asiatica Extract, Portulaca Oleracea Extract, Hydrolyzed Pea Protein, Illicium Verum(Anise) Fruit Extract, Carica Papaya (Papaya) Fruit Extract, Proline

PRODUCT BENEFIT

- ❖ Wrinkle Care and Skin Regeneration Functional Cosmetic with Adenosine
- ❖ Skin Elasticity Cream with Proline and Natto Gum
- ❖ Non Greasy Nutrient Cream



03
SEBUM CATCHER CLEAR 100ml

Sodium Hyaluronate, Chamaecyparis Obtusa Water, Piper Methysticum Leaf/Root/Stem Extract, Houttuynia Cordata Extract, Illicium Verum(Anise) Fruit Extract, Citrus Paradisi(Grapefruit) Fruit Extract, Farnesyl Acetate

PRODUCT BENEFIT

- ❖ Toner for oily skin and acne-prone skin
- ❖ Controls excessive secretion of sebum and protects oily skin due to sebum.
- ❖ Relieves itchiness and stress with moisturizing and cooling effect and keeps the skin healthy.



04
AC GEL 15ml

Sodium Hyaluronate, Chamaecyparis Obtusa Water, Piper Methysticum Leaf/Root/Stem Extract, Houttuynia Cordata Extract, Retinyl Palmitate

PRODUCT BENEFIT

- ❖ Is fit to apply on the acne-prone skin and VIVO(KC-151111-C1) test, Conformity Assessmet and Efficay Evaluation, was passed clinically.
- ❖ Spot gel for oily skin and acne-prone skin
- ❖ Intensive gel for affected part due to a pimple
- ❖ Intensive soothing gel for trouble skin due to a pimple



BLEMISH CARE/SUN BLOCK CARE CLEANSING CARE



01 BRILLIANT BB CREAM 50ml

Ethylhexyl Methoxycinnamate, Titanium Dioxide, Niacinamide, Zinc Oxide, Isoamyl p-Methoxycinnamate, Diethylamino HydroxybenzoylHexyl Benzoate, Sodium Hyaluronate, Centella Asiatica Extract, Adenosine

PRODUCT BENEFIT

- ❖ Triple Functional Product with UV Cut, Whitening and Wrinkle Care approved by KFDA
- ❖ High Performance UV Cut Formula with SPF40, PA++
- ❖ Ultra Whitening and Wrinkle Care Formula
- ❖ Covers skin blemish.
- ❖ Is a supple, lightweight formula with a hint of color you can use in place of foundation for a natural finish and a healthy illuminating complexion.



02 ULTRA SUN BLOCK CREAM 50ml

Intensive UV Cut Whitening and Wrinkle Care Program
SPF50+, PA+++

Ethylhexyl Methoxycinnamate, Titanium Dioxide, Zinc Oxide, Niacinamide, Sodium Hyaluronate, Isoamyl p-Methoxycinnamate, Diethylamino HydroxybenzoylHexyl Benzoate, Bis-Ethylhexyloxyphenol Methoxyphenyl Triazine, Ceramide 3, Adenosine

PRODUCT BENEFIT

- ❖ Triple Functional Formula with UV Cut, Whitening and Wrinkle Care approved by KFDA
- ❖ High Performance UV Cut Formula with SPF50+, PA+++
- ❖ Ultra Whitening and Wrinkle Care Formula
- ❖ Is a supple, lightweight formula with a hint of color you can use in place of foundation for a natural finish and a healthy illuminating complexion.



03 AQUA RICH PURE CLEANSER 250ml

Mild Pure Bubble Massage Cleanser

Sodium Hyaluronate, Illicium Verum(Anise) Fruit Extract, Aloe Barbadensis Leaf Extract, Centella Asiatica Extract, Natto Gum, Portulaca Oleracea Extract, Olea Europaea (Olive) Fruit Oil

PRODUCT BENEFIT

- ❖ Foam Mousse Cleanser with Amino Acid Cleansing Agent
- ❖ Foam Mousse Weak Acid Cleansing Formula For Dry and Sensitive Skin
- ❖ Relieves flushing and irritation on contact while it nourishes and strengthens delicate, vulnerable skin.
- ❖ Excellent Cleansing Effect
- ❖ Designed to thoroughly remove impurities without disturbing the skin's nature physiological balance.



04 FACE WASH ENZYME POWDER 60g

Cosmeceutical Formula / pH Balanced Cleansing Care Program

Betaine, Pollen Extract, Laminaria Japonica Extract, Carica Papaya (Papaya) Fruit Extract, Papain

PRODUCT BENEFIT

- ❖ Powder Cleanser with Amino Acid Cleansing Agent
- ❖ The powder dissolve even in cold water.
- ❖ Contains natural enzymes of papain extracted from unripe papaya fruits of which help to eliminate dead keratins without skin irritation.
- ❖ Is a powder cleanser for oily and acne-prone skin.
- ❖ Removes impurities and helps maintain a clear and healthy looking skin.



ANTI-HAIR LOSS FUNCTIONAL COSMETICS



01



02

01
HAIR CLINIC SHAMPOO 300ml
 Reborncell Scalp Research Center

Panthenol, Salicylic Acid, Menthol, Swertia Japonica Extract, Biotin, Niacinamide

PRODUCT BENEFIT

- ❖ Functional Shampoo with Dexpanthenol, Salicylic Acid and Menthol for Hair Loss Care and approved by KFDA
- ❖ Hair Loss Care Expert
- ❖ Recovers hair and scalp.
- ❖ Strengthens the root of hair and recovers hair follicle.
- ❖ Increases hair thickness.



02
HAIR CLINIC ESSENCE 100ml
 Reborncell Scalp Research Center

Panthenol, Salicylic Acid, Menthol, Swertia Japonica Extract, Biotin, Niacinamide

PRODUCT BENEFIT

- ❖ Functional Essence with Dexpanthenol, Salicylic Acid and Menthol for Hair Loss Care and approved by KFDA
- ❖ Hair Loss Care Expert
- ❖ Recovers hair and scalp.
- ❖ Strengthens the root of hair and recovers hair follicle.
- ❖ Increases hair thickness.



01

02

03

01

DERMA BARRIER CREAM 30ml

Soft and Comfortable



Squalane, Sodium Hyaluronate, Butyrospermum Parkii (Shea Butter), Oenothera Biennis (Evening Primrose) Oil, Borago Officinalis Seed Oil, Illicium Verum (Anise) Fruit Extract, Centella Asiatica Extract, Ceramide NP

PRODUCT BENEFIT

- ❖ Intensive Skin Barrier Formula for Psoriasis
- ❖ Helps to make the redness and itchiness go away and keep the skin clean
- ❖ Provide nutrients and helps skin retain moisture to sensitive skin
- ❖ For dry and sensitive skin
- ❖ Relieves itchiness and stress with moisturizing and cooling effect and keeps the skin healthy

02

INTENSIVE LOTION 200ml

Soft and Comfortable

Butyrospermum Parkii (Shea Butter), Squalane, Madamia Ternifolia Seed Oil, Betaine, Sodium Hyaluronate, Houttuynia, Cordata Extract, Centella Asiatica Extract, Portulaca Oleracea Extract, Ceramide NP, Hydrolyzed Collagen



03

INTENSIVE CREAM 100ml

Soft and Comfortable

Butyrospermum Parkii (Shea Butter), Squalane, Madamia Ternifolia Seed Oil, Betaine, Sodium Hyaluronate, Houttuynia, Cordata Extract, Centella Asiatica Extract, Portulaca Oleracea Extract, Ceramide NP, Hydrolyzed Collagen

PRODUCT BENEFIT

- ❖ Intensive Skin Barrier Formula for Dry Skin
- ❖ Helps to make the redness and itchiness go away and keep the skin clean
- ❖ Provides nutrients and helps skin retain moisture to sensitive skin
- ❖ For dry and sensitive skin



PRODUCT BENEFIT

- ❖ Intensive Skin Barrier Formula for Dry Skin
- ❖ Helps to make the redness and itchiness go away and keep the skin clean
- ❖ Provides nutrients and helps skin retain moisture to sensitive skin
- ❖ For dry and sensitive skin



Leading Company of Bio-Science

- 국제 우수화장품 제조 및 품질관리 시스템 ISO-GMP 22716 인증기업
- 품질관리 및 환경관리시스템 ISO 9001 / ISO 14001 인증기업 ■ 기업부설연구소 인증 기업 ■ 벤처기업 인증기업
- 인천광역시 지정 유망중소기업 ■ OCM/OBM/ODM/OEM 전문기업 ■ 병원용 화장품 전문기업 ■ 의약외품 전문기업

GLOBAL LEADER OF BIOSCIENCE



[22667] 인천광역시 서구 도담4로 33 / Tel : (032)816-1845~7 Fax : (032)816-1850
Customer Service : +82-7076257522 / 33, Dodam 4-ro, Seo-gu, Incheon, Korea,
www.enbios.com / www.reborncell.co.kr

Vietnam Branch: ENBIOSCIENCE VINA

Thửa 15 Lô 22B, Đường Lê Hồng Phong, Phường Đông Khê, Quận Ngô Quyền, Tp. Hải Phòng, Việt Nam.
Tel: 0225 3721 238