



—— 이룸팩토리

EROOM FACTORY Co., Ltd.

Company Indroduction



Naturalism



Human Hearts

The company that produces products that faithfully balance between naturalism and human hearts.



Cleanliness

Eroom Factory produces all products through the strict operation and manufacturing management system to minimize external pollution.



Hypoallergenic

We minimized the use of preservatives to prevent irritation of sensitive skin.



Closeness to nature

We use ingredients extracted from natural items like marine plants and grains, considering the environment.



Stability

We research methods to ensure the stability of ingredients that can be changed under low or high temperature during transportation.

Philosophy of Management



“Eroom Factory” is a company that makes beauty and shares values in the Korean language
“Make It As We Will”



| | | | |
|---------|---|---------|---------------------|
| Company | EROOM FACTORY Co.,Ltd. | CEO | SANG-KWON, KIM |
| Items | Cosmetics, Consumer goods | | |
| Address | B-507, 283, Bupyeong-daero, Bupyeong-gu, Incheon, Republic of Korea | | |
| TEL | 070-7424-5858 | FAX | +82-32-560-6049 |
| E-mail | eromcos@daum.net lilyblanc80@naver.com | Website | www.eromfactory.com |

səəkniQue

SUUEN

*vva*f
COSMETIC

ABLSkinLab

시크닉 마스크

SEEKNIQUE MASK

미백·주름개선 기능성 화장품

Whitening and Anti-wrinkle functional cosmetics

시카 마스크 · 비타 마스크 · 히알루 마스크 (25ml*30Sheet)



시카 마스크 CICA MASK

#병풀추출물 #피부진정 #피부보호

#Centella Asiatica Extract #Relaxing #Protection

피부 진정과 보호에 탁월한 병풀추출물 함유로 외부환경으로부터 자극받은 피부를 빠르게 진정시키고, 풍부한 영양을 부여하여 매끈하고 윤기있는 건강한 피부로 가꾸어줍니다.

It quickly soothes skin irritated by the external environment by containing Centella Asiatica Extract, which is excellent for soothing and protecting the skin and provides rich nutrition to make skin smooth and glossy, and healthy.

Relaxing and protection

피부진정 & 보호막 케어



비타 마스크 VITA MASK

#비타민C #브라이트닝 #생기충전

#Vitamin C #Brightening #Vibrant

피부톤 개선에 탁월한 비타민C 함유로 피부에너지를 높여주고, 풍부한 영양을 부여하여 밝고 생기있는 건강한 피부로 가꾸어줍니다.

Vitamin C, which is excellent for improving skin tone, enhances skin energy, and nourishes healthy skin with abundant nutrition.

Brightening and vibrant

브라이트닝 & 피부활력



히알루 마스크 HYALU MASK

#히알루론산 #피부보습 #수분충전

#Hyaluronic acid #Moisturizing #Waterizing

강력한 보습성분 히알루론산 함유로 메마르고 거친 피부에 수분을 급속충전하고, 풍부한 영양을 부여하여 촉촉하고 윤기있는 건강한 피부로 가꾸어줍니다.

It quickly fills dry and rough skin with the healthy moisturizing ingredient hyaluronic acid and nourishes skin with rich nutrition to make skin moist and glossy.

Moisturizing and waterizing

피부보습 & 수분충전

오늘부터 시 - 작!

피부 상태에 따라 골라쓰는 재미!
재미있는 습관 :) 시크니크 1일1팩



seekniQue

It's fun to choose
depending on your
skin condition!

START TODAY!

SEEKNIQUE
Mask Pack
Every Day by Day



병풀추출물 Centella Asiatica Extract

마데카식산이 함유되어있어 상처가 난 부위에 콜라겐 생성을 도와
피부를 건강하게 유지하는데 도움을 줍니다.

It contains Madecasic acid, which helps produce collagen in the injured
area and helps keep the skin healthy.

Three kinds of masks, Whitening, Wrinkle-improving functional cosmetics

Contains ingredients
certified by the Ministry of
Food and Drug Safety

Niacinamide

The whitening functional raw
material that helps to whiten the
skin

Adenosine

Prevent wrinkles on the skin
with wrinkle-functioning
ingredients



시트러스추출물 Citrus Fruit Extract

레몬, 자몽, 라임 (Lemon, Grapefruit, Lime) 추출물로 이루어진 콤플렉스로
풍부한 비타민이 피부를 밝고 청정하게 가꿔주며 피부 각질제거를 도와
피부결을 생기있고 건강하게 만들어줍니다.

With a complex of lemon, grapefruit, and lime extracts, rich vitamins
make your skin bright and clean and help exfoliate your skin, making
your skin lively and healthy.

Use a soft mask
Tencel sheet for quick
nourishment and
moisture delivery to
the skin



It adheres tightly to the curved
skin and quickly delivers full
nutrition and moisture to the
skin.

What is a Tencel Sheet?

It is made of natural raw materials
extracted from eucalyptus trees.
Tencel sheet with a soft texture has
a smooth surface and texture, so it
is safe to use sensitive skin!

히알루론산 Hyaluronic acid

피부에 수분 컨디셔닝을 부여하고 피부 에너지 제공에 관여하여
활력 있는 촉촉한 피부로 가꾸는데 도움을 줍니다.

It provides moisture conditioning to the skin and helps to provide energy
to the skin to keep the skin moist.

수앤 오리진 블랙 샴푸

SUUEN ORIGIN BLACK SHAMPOO

오리진 블랙 샴푸 (700ml · 200ml · 100ml)



오리진 블랙 샴푸 ORIGIN BLACK SHAMPOO

#완두콩단백질 #헤어볼륨 #윤기

#Pea protein #Hair volume #Shiny

핵심성분 완두콩 단백질과 아미노산으로 인한 모발 단백질 결합력에 도움을 주는 샴푸로 모발을 건강하고 탄력있게 가꾸어 줍니다. 헤어살롱에 가지 않고, 매일 샴푸만으로 단백질 크리닉 홈케어를 할 수 있습니다.

The shampoo that helps the hair protein bond with the vital ingredient peas and amino acids keeps the hair healthy and resilient. You can do protein Clinic Home Care with just shampoo without going to the hair salon.

Check every single ingredient of shampoo used every day.

모발 단백질 결합력, 지푸라기 극복 샴푸

- 용량대비 완두콩단백질 약 30% 함유
- 걱정성분 17종 무첨가
- 자연유래성분 47종 함유, 온가족 샴푸
- 저자극 샴푸 (ph 5.5 약산성)

9가지 인체적용시험 완료

- 모발 단백질 결합력에 도움
- 25시간 뿌리 볼륨 지속력에 도움
- 48시간 모발 볼륨 지속력에 도움
- 48시간 모발 보습 지속력에 도움
- 100회 샴푸 시 펌 모발 보습 지속력에 도움
- 100회 샴푸 시 염색제의 색상 지속력에 도움
- 모발(헤어) 윤기 개선(엔젤링 효과)에 도움
- 손상 모발(큐티클) 보호 및 개선효과에 도움
- 피부 저 자극 테스트 완료

Hair protein binding force, Rough hair care

- Contains about 30% of pea protein compared to capacity
- No 17 harmful ingredients
- Contains 47 types of natural ingredients, whole family shampoo
- Hypoallergenic shampoo (ph 5.5 weak acidity)

9 Human Application Tests Completed

- Helps with hair protein binding force
- Helps with 25 hour root volume persistence
- Helps sustain 48 hours of hair volume
- Helps moisturize your hair for 48 hours
- Helps moisturize and moisturize perm hair for 100 shampoo sessions
- Helps with color persistence of dye for 100 shampooings
- Helps improve hair (hair) gloss (Angeling effect)
- Helps protect and improve damaged hair (cuticle)
- Complete skin low irritation test.



30% of
pea protein
+
17types of
amino acid protein

Hair clinic and volume up
at the same time

7,700mg
of basil seeds

Boost in hair volume
once more

SUUEN 20
COMPLEX

Supplies moisture
and protein to hair for
elasticity and
moisturizing

Grapefruit
essential oil

Much more lustrous
hair by essence oil

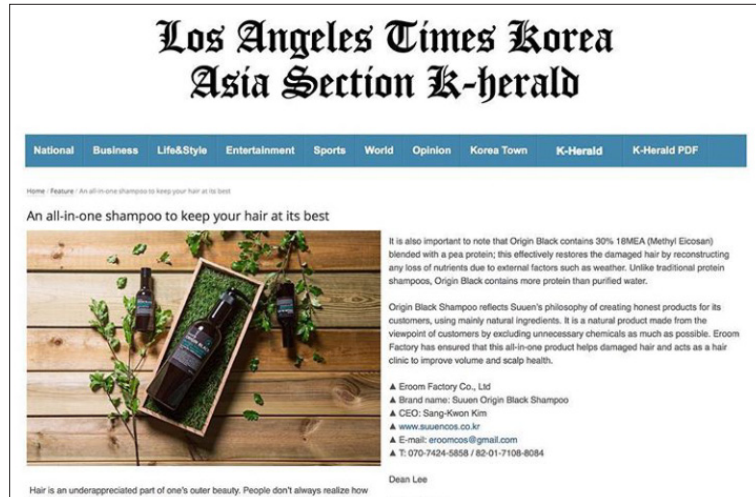
수앤 오리진 블랙 샴푸

SUUEN ORIGIN BLACK SHAMPOO

오리진 블랙 샴푸 (700ml · 200ml · 100ml)



수앤 전속 모델 : 가수 김원준
SUUEN Exclusive Model : Singer Kim Won-joon



연예인, 셀럽들이 즐겨 쓰는 수앤 오리진 블랙 샴푸
Shampoo used by celebrities, SUUEN ORIGIN BLACK SHAMPOO



TV 홈쇼핑 방송
: 전상품 매진되는 인기 상품
TV Home Shopping Broadcasting
: All sold out popular products

롯데홈쇼핑
GS SHOP

바프 에이원 클렌저

VRAF A1 CLEANSER

여드름 기능성 화장품
Acne-functioning cosmetics

풀잎향 · 코코넛레몬향 (500ml · 100ml)



에이원 클렌저 A1 CLEANSER (Face&Body)

#여드름피부관리 #각질관리 #피부보습

#Acne skin care #Exfoliation management #Moisturization

여드름 피지, 각질, 진정, 보습을 한번에 관리하며, 얼굴과 바디피부를 동시에 사용가능한 저자극 여드름 케어 클렌저입니다. 식품의약품안전처의 여드름 개선 성분이 함유되어 피부 피지와 각질을 부드럽게 녹이고, 제거해 매끄러운 피부로 가꿔줍니다. 또한, 약산성 클렌저로 유수분 밸런스를 맞추어 건강한 pH 수준의 피부를 유지합니다. 건조함은 피부를 약하게 만드는 가장 근본적인 원인입니다. 글리세린, 판테놀, 유레아 등 강력한 보습 성분이 함유되어 피부 자체의 보호막을 강화시켜줍니다. 편안하고 휘레시한 풀잎향과 상큼하고 달콤한 코코넛레몬향이 있습니다.

This is a hypoallergenic acne care cleanser that manages acne sebum, dead skin, soothing and moisturizing at once, and can use both the face and body skin at the same time. It contains acne improvement ingredients from the Ministry of Food and Drug Safety, which gently melts the sebum and dead skin cells and removes them to make your skin smooth. It also maintains healthy pH level skin by adjusting the oil and water balance with a slightly acidic cleanser. Dryness is the most fundamental cause of skin weakness. It contains strong moisturizing ingredients such as glycerin, Panthenol, and Urea, strengthening the protective membrane of the skin itself. It has a comfortable and vivid scent of grass leaves and a refreshing and sweet coconut lemon scent.

Soothing acne,
sebum and
exfoliating care

Salicylic Acid

Exfoliant effects : Remove excessive dead skin cells

Softly melt and strongly remove grainy sebum and waste blocking pores

Feel our soft skin texture : No need to use strong scrubbing products
fine dust removal

*Compliance with standards of usage limit recommended by the Ministry of Food and Drug

7가지 인체적용시험 완료

- 피부 자극극 테스트 완료
- 피부 착색부위 피부 톤업(브라이트닝)에 도움
- 미세먼지 모사체 세정에 도움
- 각질량 감소에 도움
- 수분손실량 감소에 도움(피부장벽유지)
- 피지(유분) 개선에 도움
- 모공 속 노폐물 세정에 도움

7 Human Application Tests Completed

- Completed skin irritation test.
- Helps tone up (brightening) skin areas of skin coloration
- Helps clean up the mimics of fine dust
- Helps reduce dead skin mass
- Helps reduce the amount of moisture loss (maintenance of the skin wall)
- Helps improve sebum (oil)
- Helps wash waste in pores



바프 에이원 클렌저

VRAF A1 CLEANSER

여드름 기능성 화장품
Acne-functioning cosmetics

풀잎향 · 코코넛레몬향 (500ml · 100ml)

바프 전속 모델 : 가수 김원준
Vraf Exclusive Model : Singer Kim Won-joonTV 홈쇼핑 인기 상품
TV Home Shopping Popular Products

코코넛레몬향 Coconut Lemon

상큼하고 달달한 향이 은은하게 퍼지는 코코넛 레몬 향. The scent of coconut lemon, where a fresh and sweet scent spreads gently.

풀잎향 Grass Leaf

아침 숲길을 걷는 듯 싱그럽고, 상쾌한 프레쉬한 향. A fresh, refreshing aroma as if walking on a forest path in the morning.

에이비엘스킨랩 마스크 & 크림

ALBSkinLab MASK & CREAM

마데카라 · 시카라 마스크 (30ml) / 마데카라 크림 (50ml · 20ml)



Relaxing and protection

마데카라 마스크 Madeca:RA Mask

#마데카소사이드 #프로폴리스추출물

#Madecassoside #Propolis Extract

유해환경으로부터 자극받은 지친 피부 진정 집중 케어

울긋불긋 열오른 피부를 빠르게 진정, 피부 보호막을 케어 해주며 영양과 보습을 채워 촉촉하고 윤기나는 피부로 바꾸어 주는 마스크입니다.

Tired skin soothing intensive care stimulated by harmful environments

This mask soothes your red and hot skin quickly takes care of the skin barrier and fills the skin with nutrition and moisturization to make your skin moist and shiny.

피부진정 & 보호막 케어



Moisturizing and waterizing

시카라 마스크 Cica:RA Mask

#병풀추출물 #히알루론산

#Centella Asiatica Extract #Sodium Hyaluronate

수분이 부족하고 거칠어진 피부에 집중 케어

풍부한 영양과 수분을 부여하여 피부를 진정시키고, 보습 효과를 높여 수분 부족한 거친 피부를 촉촉하고 매끈한 피부로 바꾸어 주는 마스크입니다.

Focusing care on skin that lacks moisture and becomes rough

This mask soothes and moisturizes skin by providing rich nutrition and moisture and improving moisturizing effects to moisturize and smooth skin.

피부보습 & 수분충전



Whitening and Anti-wrinkle

마데카라 겔 크림 Madeca:RA Gel Cream

#센탈라아시아티카정량 #피부진정 #피부보습

#TECA 10,000PPM #Soothing #Moisturizing

센탈라아시아티카 정량추출물(TECA) 10,000 PPM, 병풀추출물 200,000 PPM 함유로 피부진 정케어에 탁월하며 피부보습, 미백, 피부탄력을 높여 줍니다. 촉촉한 겔 타입의 연고제형으로 산뜻한 사용감으로 촉촉하게 피부결로 바꾸어 줍니다.

It contains Centella Asiatica Quantitative Extract (TECA) of 10,000 PPM and Centella Extract of 200,000 PPM, which is excellent for skin calming care and improves skin moisturization, whitening, and skin elasticity. It is a moist gel-type ointment that makes your skin moisturized with a fresh texture.

미백·주름개선 기능성 화장품

Skincare, Haircare, Bodycare, Special Home Esthetic care OEM/ODM is possible

Cleansing Water, Cleanser, Ampoule, Mist, Toner, Cream, Peeling Gel, Mask, Trouble patch, Sunblock, etc.



Cleansing Water

You cannot only clear all types of make-up, but you can also take care of your skin health by this subacid cleansing water. You can use it without any worries, thanks to ingredients of the EWG green level. Smooth, clean texture, and all the pure ingredients keep your skin hydrated.



Bio Power Serum Mist

It is an energy power mask that forms an immediate nutrient and moisture barrier on tired and rough skin. It is useful for whitening, elasticity, and soothing. It makes your skin bright and elastic with fast absorption without stickiness and a moist texture.



Sparkling Toner

It instantly calms your skin. A fine, nutritious bubble gently permeates the skin and nourishes it with a moist, glossy, healthy skin. It is useful for moisturizing and relieving skin.



Skin Peel Renew Cream

It contains Spicule, a needle-shaped natural bedding system, which is a natural extract of the clean sea, to help with problematic skincare. It helps with dull, rough skin, old dead skin cells, and waste care by advancing the skin turnover cycle. Also, you can manage premium esthetic products as home care with double functional cosmetics that help improve whitening and wrinkles.



Ampoule Serum

It is an ampoule serum that nourishes and moisturizes the skin, forms a moisture protection film, and makes the skin bright and bright. It makes your skin glossy and moist with a feeling of no stickiness.



Wild Ginseng Cream

This highly concentrated anti-aging cream contains ginseng extract grown on Mt. Halla in pristine Jeju Island and Korean herbal medicine, yellow flag. The soft cream adheres to the skin, strengthening the foundation and replenishing its energy to create a resilient, glossy, healthy skin.



Tone Up Sun Cream

Its sunscreen protects the skin from ultraviolet rays and brightens skin tone. It has many ultraviolet light vehicles with SPF50+ PA++ and brightens the skin flexibly and healthily with ingredients that effectively whiten and improve wrinkles.



Magic Peeling Gel

It contains an amino acid complex that gently removes dead skin and wastes to smooth skin texture. It's a Peeling + Softening + Clearing + Moisturizing + Toning + Brightenings 6 in 1 filling gel.



AC Spot Clear Patch Kit

This kit consists of two types of spot patches used before and after the spot area burst. It can be used according to skin concerns. It quickly calms down and protects the spot area. It has natural covers and excellent adhesion. Waterproof and spent makeup is possible.



Thank you



www.eroomfactory.com